

## Sensor Accessories



8

## Contents

### Description

	<i>Page</i>
Sensor Accessories	
Product Selection .....	<b>V8-T8-10</b>
Dimensions .....	<b>V8-T8-12</b>

## Sensor Accessories



### Product Description

Accessories from Eaton's Electrical Sector include portable power supplies for testing or demonstrating DC sensors, a variety of

replacement mounting nuts, protective end caps for tubular proximity sensors, and conduit adapters for tubular sensors.

### Product Selection

#### Sensor Accessories

	<b>Description</b>	<b>Catalog Number</b>
 <p><b>DC Sensor Tester/Demonstrator</b></p>	<p><b>DC Sensor Tester/Demonstrator</b></p> <p>For two-, three- and four-wire DC sensors Provides 27 Vdc power from three 9V batteries (included) Test output connections for both NPN and PNP outputs</p>	<p><b>9902A-6501</b></p>
 <p><b>AC Sensor Tester/Demonstrator</b></p>	<p><b>AC Sensor Tester/Demonstrator</b></p> <p>For AC sensors Provides AC power from wall mount Includes AC adapter</p>	<p><b>9902A-6502</b></p>
<p><b>Dimensions, see Page V8-T8-12.</b></p>		

For the most current information on this product, visit our Web site: [www.eaton.com](http://www.eaton.com)

For Customer Service in the U.S. call 1-877-ETN CARE (386-2273), in Canada call 1-800-268-3578.  
For Application Assistance in the U.S. and Canada call 1-800-426-9184.

## Sensor Accessories, continued

	Description	Sensor Diameter	Catalog Number
<b>Mounting Nut, E57KN_</b> 	<b>Replacement Mounting Nuts—Stainless Steel, E57KN_</b> Where used: Harsh environment for tubular sensors Material of construction: Stainless steel Packaging: Two per package	8 mm 12 mm 18 mm 30 mm	<b>E57KNM8</b> <b>E57KNS12</b> <b>E57KNS18</b> <b>E57KNS30</b>
<b>Mounting Nut, E60KN18</b> 	<b>Replacement Mounting Nuts—Brass</b> Where used: General purpose for tubular sensors <sup>①</sup> Material of construction: Brass Packaging: Two nuts and two wave washers per package	18 mm	<b>E60KNS18</b>
<b>Mounting Nut, E58KN_</b> 	<b>Replacement Mounting Nuts—Stainless Steel, E58KN_</b> Where used: Harsh environment for tubular sensors Material of construction: Stainless steel Packaging: Two per package	18 mm 30 mm	<b>E58KNS18</b> <b>E58KNS30</b>
<b>Mounting Nut, E57KNC18</b> 	<b>Replacement Mounting Nuts—Plastic</b> Where used: Harsh environment for tubular and SM series sensors Material of construction: Plastic Packaging: Two per package	18 mm	<b>E57KNC18</b>
<b>Protective Cap, E57KP_</b> 	<b>Protective Caps—E57KP_</b> Where used: Tubular Proximity Sensors Material of construction: Delrin Packaging: One per package	12 mm 18 mm 30 mm	<b>E57KP12</b> <b>E57KP18</b> <b>E57KP30</b>
<b>Conduit Adapter, E57KC_</b> 	<b>Conduit Adapters—E57KC_</b> Where used: To attach electrical conduit to rear of tubular sensors Material of construction: Die cast steel Packaging: One adapter and nut per package	8 mm 12 mm 18 mm 30 mm	<b>E57KC8</b> <b>E57KC12</b> <b>E57KC18</b> <b>E57KC30</b>
<b>Conduit Adapter, E58KC30</b> 	<b>Conduit Adapters—E58KC30</b> Where used: To attach E58 harsh duty 30 mm sensors to half-inch conduit fittings Material of construction: Stainless steel Packaging: One per package	30 mm	<b>E58KC30</b>
<b>Dimensions, see Page V8-T8-12.</b>			

**Note**

<sup>①</sup> These are the standard mounting nuts shipped with the Comet, Prism and OEM Prism photoelectric sensors.

### Dimensions

Approximate Dimensions in Inches (mm)

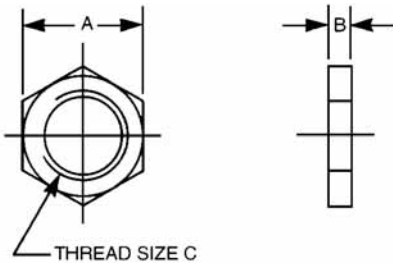
#### DC Sensor Tester/Demonstrator

W	H	D
2.5 (65)	4.75 (120)	2.1 (55)

#### AC Sensor Tester/Demonstrator

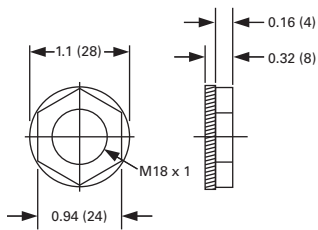
W	H	D
2.5 (65)	4.5 (114)	1.5 (38)

### Replacement Mounting Nuts—Stainless Steel and Brass

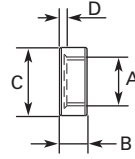


Size	A	B	C
8 mm	0.5 (13)	0.16 (4)	M8 x 1
12 mm	0.7 (17)	0.16 (4)	M12 x 1
18 mm	0.94 (24)	0.16 (4)	M18 x 1
30 mm	1.4 (36)	0.16 (4)	M30 x 1.5

### Replacement Mounting Nuts—Plastic

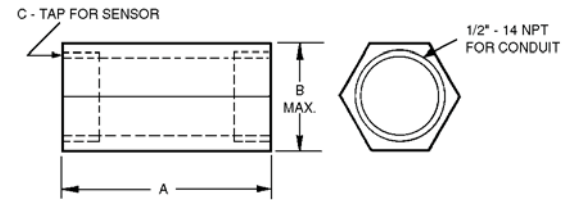


### Protective Caps



Size	Switch Size A	B	C	Thickness D
12 mm	0.47 (12)	0.39 (10)	0.63 (16)	0.04 (1.0)
18 mm	0.71 (18)	0.36 (9.2)	0.83 (21.2)	0.04 (0.9)
30 mm	1.18 (30)	0.59 (15)	1.42 (36)	0.07 (1.7)

### Conduit Adapters—E57KC\_



Size	Length A	Hex B	Tap C
8 mm	1.0 (25)	1.0 (25)	M8 x 1
12 mm	1.5 (38)	1.0 (25)	M12 x 1
18 mm	1.5 (38)	1.0 (25)	M18 x 1
30 mm	1.9 (48)	1.5 (38)	M30 x 1.5

### Conduit Adapters—E58KC30

