

LIGHT-DUTY ACTUATION SOLUTIONS

ELECTRICALLY ACTUATED LIGHT DUTY BRASS VALVES



Please note: These EHW series industrial valves require an open/close signal to operate and do not directly communicate with WaterCop wireless sensors and do not have an integrated WaterCop wireless receiver. For whole-house leak detection systems, please see www.watercop.com for information on our WaterCop family of residential shut-off products.

- Choose from multiple options:
 - Voltages: 110 VAC, 220VAC, 24 AC/DC, 12DC
 - Optional override handles – DC only
 - Feedback options: none, dry contact, live open/close
- Maximum pressure 125 psid
- Media temperature 35-165 deg F
- Media = water, oil, gas or similarly compatible with brass
- RTFE seats and seals
- Full flow valve (no restriction)
- NSF/ANSI 372 Certified Lead Free valve for potable water service

DynaQuip EHW Series Electrically Actuated Light Duty Brass Valves are perfect for open/close, 1/2" through 1-1/4" automated applications which have a low psi media requirement (125 psid CWP or less).

Due to the flexibility of available options and exceptionally great value when compared to other automated valves, these light-duty, direct-mount actuated valves are perfect for a wide variety of industrial and OEM applications.

From our WaterCop family, these 2 piece forged brass valves are full port with RTFE seats and mount in any position for maximum installation flexibility. Pigtail connections facilitate quick wiring.

These NEMA 4 light-duty valves have a 25% duty cycle and are suitable for water, oil, gas and other similarly non-viscous fluids. Valves are NSF/ANSI 372 Lead-Free rated for potable water as a standard.

DynaQuip Controls has a solution for all your actuation needs. Whether it's a question about industrial high volume requirements or simply assistance in selecting the proper unit for your application, we welcome your inquiries.



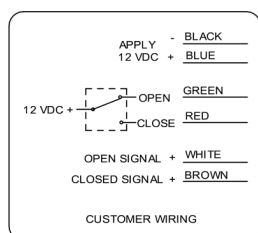
Scan code for more
information about this product



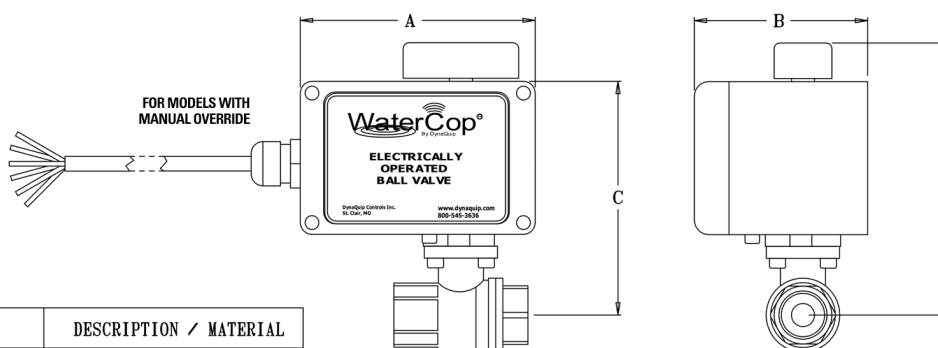
800-545-3636 • dynaquip.com

ELECTRICALLY ACTUATED LIGHT DUTY BRASS VALVES

MODEL #	SIZE (FNPT)	VOLTAGE	FEEDBACK	OVERRIDE	FEATURES
EHW23AJP01	1/2	110 VAC	NO	NO	NEMA 4/4X w/3 Ft. 3 Conductor "Pigtail"
EHW24AJP01	3/4	110 VAC	NO	NO	NEMA 4/4X w/3 Ft. 3 Conductor "Pigtail"
EHW25AJP01	1	110 VAC	NO	NO	NEMA 4/4X w/3 Ft. 3 Conductor "Pigtail"
EHW26AJP01	1 1/4	110 VAC	NO	NO	NEMA 4/4X w/3 Ft. 3 Conductor "Pigtail"
EHW23AJP01B	1/2	220 VAC	NO	NO	NEMA 4/4X w/3 Ft. 3 Conductor "Pigtail"
EHW24AJP01B	3/4	220 VAC	NO	NO	NEMA 4/4X w/3 Ft. 3 Conductor "Pigtail"
EHW25AJP01B	1	220 VAC	NO	NO	NEMA 4/4X w/3 Ft. 3 Conductor "Pigtail"
EHW26AJP01B	1 1/4	220 VAC	NO	NO	NEMA 4/4X w/3 Ft. 3 Conductor "Pigtail"
EHW23AJP01D	1/2	12 VDC	NO	NO	NEMA 4/4X w/3 Ft. 3 Conductor "Pigtail"
EHW24AJP01D	3/4	12 VDC	NO	NO	NEMA 4/4X w/3 Ft. 3 Conductor "Pigtail"
EHW25AJP01D	1	12 VDC	NO	NO	NEMA 4/4X w/3 Ft. 3 Conductor "Pigtail"
EHW26AJP01D	1 1/4	12 VDC	NO	NO	NEMA 4/4X w/3 Ft. 3 Conductor "Pigtail"
EHW23AJP02D	1/2	12 VDC	NO	YES	NEMA 4/4X w/3 Ft. 3 Conductor "Pigtail"
EHW24AJP02D	3/4	12 VDC	NO	YES	NEMA 4/4X w/3 Ft. 3 Conductor "Pigtail"
EHW25AJP02D	1	12 VDC	NO	YES	NEMA 4/4X w/3 Ft. 3 Conductor "Pigtail"
EHW26AJP02D	1 1/4	12 VDC	NO	YES	NEMA 4/4X w/3 Ft. 3 Conductor "Pigtail"
EHW23AJP11D	1/2	12 VDC	LIVE Open & Close	NO	NEMA 4/4X w/3 Ft. 6 Conductor "Pigtail"
EHW24AJP11D	3/4	12 VDC	LIVE Open & Close	NO	NEMA 4/4X w/3 Ft. 6 Conductor "Pigtail"
EHW25AJP11D	1	12 VDC	LIVE Open & Close	NO	NEMA 4/4X w/3 Ft. 6 Conductor "Pigtail"
EHW26AJP11D	1 1/4	12 VDC	LIVE Open & Close	NO	NEMA 4/4X w/3 Ft. 6 Conductor "Pigtail"
EHW23AJP12D	1/2	12 VDC	LIVE Open & Close	YES	NEMA 4/4X w/3 Ft. 6 Conductor "Pigtail"
EHW24AJP12D	3/4	12 VDC	LIVE Open & Close	YES	NEMA 4/4X w/3 Ft. 6 Conductor "Pigtail"
EHW25AJP12D	1	12 VDC	LIVE Open & Close	YES	NEMA 4/4X w/3 Ft. 6 Conductor "Pigtail"
EHW26AJP12D	1 1/4	12 VDC	LIVE Open & Close	YES	NEMA 4/4X w/3 Ft. 6 Conductor "Pigtail"
EHW23AJP21D	1/2	12 VDC	Dry Contact	NO	NEMA 4/4X w/3 Ft. 6 Conductor "Pigtail"
EHW24AJP21D	3/4	12 VDC	Dry Contact	NO	NEMA 4/4X w/3 Ft. 6 Conductor "Pigtail"
EHW25AJP21D	1	12 VDC	Dry Contact	NO	NEMA 4/4X w/3 Ft. 6 Conductor "Pigtail"
EHW26AJP21D	1 1/4	12 VDC	Dry Contact	NO	NEMA 4/4X w/3 Ft. 6 Conductor "Pigtail"
EHW23AJP22D	1/2	12 VDC	Dry Contact	YES	NEMA 4/4X w/3 Ft. 6 Conductor "Pigtail"
EHW24AJP22D	3/4	12 VDC	Dry Contact	YES	NEMA 4/4X w/3 Ft. 6 Conductor "Pigtail"
EHW25AJP22D	1	12 VDC	Dry Contact	YES	NEMA 4/4X w/3 Ft. 6 Conductor "Pigtail"
EHW26AJP22D	1 1/4	12 VDC	Dry Contact	YES	NEMA 4/4X w/3 Ft. 6 Conductor "Pigtail"
EHW23AJP01C	1/2	24 VAC/VDC	NO	NO	NEMA 4/4X w/3 Ft. 3 Conductor "Pigtail"
EHW24AJP01C	3/4	24 VAC/VDC	NO	NO	NEMA 4/4X w/3 Ft. 3 Conductor "Pigtail"
EHW25AJP01C	1	24 VAC/VDC	NO	NO	NEMA 4/4X w/3 Ft. 3 Conductor "Pigtail"
EHW26AJP01C	1 1/4	24 VAC/VDC	NO	NO	NEMA 4/4X w/3 Ft. 3 Conductor "Pigtail"
EHW23AJP32D	1/2	12 VDC	LIVE Close Only	YES	NEMA 4/4X w/3 Ft. 6 Conductor "Pigtail"
EHW24AJP32D	3/4	12 VDC	LIVE Close Only	YES	NEMA 4/4X w/3 Ft. 6 Conductor "Pigtail"
EHW25AJP32D	1	12 VDC	LIVE Close Only	YES	NEMA 4/4X w/3 Ft. 6 Conductor "Pigtail"
EHW26AJP32D	1 1/4	12 VDC	LIVE Close Only	YES	NEMA 4/4X w/3 Ft. 6 Conductor "Pigtail"



FOR MODELS EQUIPPED WITH FEEDBACK



ITEM	DESCRIPTION / MATERIAL
VALVE BODY / END CAP	FORGED BRASS
STEM	NICKEL PLATED BRASS
BALL - (FULL PORT)	CHROME PLATED BRASS
SEATS	RTFE
THRUST WASHER	RTFE
STEM SEAL	VITON O-RINGS
HOUSING	POLYCARBONATE
FASTENERS	STAINLESS STEEL
POWER CORD	22-6 - 3 FT. LONG
TEMPERATURE RANGE	35°F TO 165°F
MAX. WORKING PRESSURE	200 PSI

ENDS	A	B	C	D
1/2" FNPT	5.0	3.75	4.72	5.54
3/4" FNPT	5.0	3.75	5.02	5.84
1" FNPT	5.0	3.75	5.17	5.99
1 1/4" FNPT	5.0	3.75	5.43	6.25



Visit www.dynaquip.com for more information

DynaQuip Controls • 10 Harris Industrial Park • St. Clair, MO 63077 • Tel. 800-545-3636 • Fax. 636-629-5528

www.comoso.com

