

Cover Plate Mounting Hardware

Part no.	Pg.	GA port Plug	Viton O-rings, 75 duro.	Mounting Screws	Locating Pins
* D08 CP P * D08 CP P G * D08 CP S * D08 COP	70	n/a (1) 0.25-18 NPTF n/a n/a	(2) -210; (4) -215 (2) -210; (4) -215 (2) -210; (4) -215 (2) -210; (2) -215; (1) -231	(6) UNC 0.50-13 x 1.75 long SHCS (6) UNC 0.50-13 x 1.75 long SHCS (6) UNC 0.50-13 x 2.50 long SHCS (6) UNC 0.50-13 x 3.50 long SHCS	(2) 0.25 dia x 0.50 long
* D08 CP P M * D08 CP P G M * D08 CP S M * D08 COP M	70	n/a n/a n/a n/a	(2) -210; (4) -215 (2) -210; (4) -215 (2) -210; (4) -215 (2) -210; (2) -215; (1) -231	(6) ISO 6H M12-1.75 x 45mm SHCS (6) ISO 6H M12-1.75 x 45mm SHCS (6) ISO 6H M12-1.75 x 65mm SHCS (6) ISO 6H M12-1.75 x 90mm SHCS	(2) 0.25 dia x 0.50 long
* D10 CP P * D10 CP P M	71	n/a n/a	(2) -210; (4) -222 (2) -210; (4) -222	(6) UNC 0.75-10 x 3.25 long SHCS (6) ISO 6H M20-2.5 x 80mm SHCS	(2) 0.25 dia x 0.50 long
* 2F06 CP P * 2F07 CP P	72	n/a n/a	(2) -018 (2) -215	(4) UNC 0.31-18 x 1.25 long SHCS (4) UNC 0.38-16 x 1.75 long SHCS	(1) 0.25 d. x 0.50 long (2) 0.25 d. x 0.50 long
* 2F06 CP P M * 2F07 CP P M	72	n/a n/a	(2) -018 (2) -215	(4) ISO 6H M8-1.25 x 35mm SHCS (4) ISO 6H M10-1.5 x 45mm SHCS	(1) 0.25 d. x 0.50 long (2) 0.25 d. x 0.50 long
* P06 CP P * P08 CP P * P10 CP P	73	n/a n/a n/a	(2) -011; (2) -018 (2) -011; (2) -215 (2) -011; (2) -220	(4) UNC 0.38-16 x 1.50 long SHCS (4) UNC 0.38-16 x 1.50 long SHCS (6) UNC 0.38-16 x 1.75 long SHCS	(2) 0.25 dia x 0.50 long
* P06 CP P M * P08 CP P M * P10 CP P M	73	n/a n/a n/a	(2) -011; (2) -018 (2) -011; (2) -215 (2) -011; (2) -220	(4) ISO 6H M10-1.5 x 35mm SHCS (4) ISO 6H M10-1.5 x 40mm SHCS (6) ISO 6H M10-1.5 x 45mm SHCS	(2) 0.25 dia x 0.50 long
* R06 CP P * R08 CP P * R10 CP P	74	n/a n/a n/a	(1) -012; (2) -018 (1) -012; (2) -216 (1) -012; (2) -220	(4) UNC 0.50-13 x 1.50 long SHCS (4) UNC 0.63-11 x 2.00 long SHCS (4) UNC 0.75-10 x 2.25 long SHCS	(1) 0.25 d. x 0.50 long (1) 0.25 d. x 0.50 long (2) 0.25 d. x 0.50 long
* R06 CP P M * R08 CP P M * R10 CP P M	74	n/a n/a n/a	(1) -012; (2) -018 (1) -012; (2) -216 (1) -012; (2) -220	(4) ISO 6H M12-1.75 x 35mm SHCS (4) ISO 6H M16-2 x 50mm SHCS (4) ISO 6H M20-2.5 x 55mm SHCS	(1) 0.25 d. x 0.50 long (1) 0.25 d. x 0.50 long (2) 0.25 d. x 0.50 long
* I08 CP P * I10 CP P	74	n/a n/a	(2) -012; (2) -216 (2) -012; (2) -220	(4) UNC 0.63-11 x 2.00 long SHCS (4) UNC 0.75-10 x 2.25 long SHCS	(1) 0.25 dia x 0.50 long
* I08 CP P M * I10 CP P M	74	n/a n/a	(2) -012; (2) -216 (2) -012; (2) -220	(4) ISO 6H M16-2 x 50mm SHCS (4) ISO 6H M20-2.5 x 55mm SHCS	(1) 0.25 dia x 0.50 long
* S04 COP * S06 COP	75.1	n/a n/a	(2) -012; (4) -013 (1) -012; (4) -019	(4) UNC 0.31-18 x 1.50 long SHCS (4) UNC 0.38-16 x 2.25 long SHCS	(1) 0.09 d. x 0.25 long (1) 0.25 d. x 0.50 long
* S04 CP P * S06 CP P	75	n/a n/a	(2) -012; (4) -013 (1) -012; (4) -019	(4) UNC 0.31-18 x 1.50 long SHCS (4) UNC 0.38-16 x 1.75 long SHCS	(1) 0.09 d. x 0.25 long (1) 0.25 d. x 0.50 long
* S04 CP P M * S06 CP P M	75	n/a n/a	(2) -012; (4) -013 (1) -012; (4) -019	(4) ISO 6H M8-1.25 x 30mm SHCS (4) ISO 6H M10-1.5 x 45mm SHCS	(1) 0.09 d. x 0.25 long (1) 0.25 d. x 0.50 long

Hydraulic Valve Manifolds Better System Design Begins with a Manifold.

VALVE ADAPTORS

Directional Valve Adaptors

Valve Adaptors for D03 Manifolds Pages 79-80

Valve Adaptors for D05 Manifolds Page 81

Valve Adaptors for D05 Manifolds
with Pilot Ports Page 82

Valve Adaptors for D06 Manifolds Page 84

Valve Adaptors for D07 Manifolds Pages 85-86

Valve Adaptors for D08 Manifolds Pages 87-88

Valve Adaptors for D10 Manifolds Page 90

Valve Adaptors for S04 Manifolds Page 91

Relief Valve Adaptors

Valve Adaptors for D05H Manifolds Page 83

Valve Adaptors for D08 Manifolds Page 89

"Obsolete Valve" Adaptors

D03 Adaptors for Obsolete Manifolds Pages 92-94

D05 Adaptors for Obsolete Manifolds Page 95

D08 Adaptors for Obsolete Manifolds Page 96

D10 Adaptors for Obsolete Manifolds Page 97

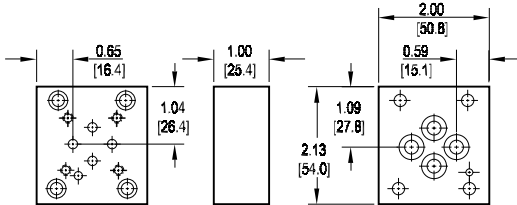
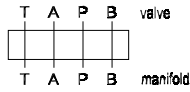
Mounting Hardware Pages 98-99

Valve Adaptors for D03 Manifolds

Adapt D02 valve to D03 manifold

Valve mtg: UNC #10-24 x 0.50 DP or
Metric M5-0.8mm ISO 6H x [12.7] DP

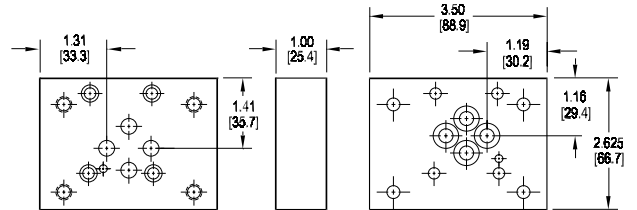
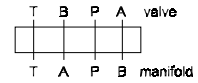
Adaptor mounting hardware is supplied.
See page 98 for itemized list.



Adapt S04 valve to D03 manifold • BA oriented

Valve mtg: UNC 0.31-18 x 0.88 DP or
Metric M8 x 1.25mm ISO 6H x [22.2] DP

Adaptor mounting hardware is supplied.
See page 98 for itemized list.

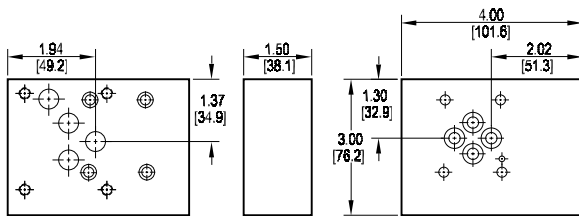
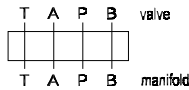


This adaptor does not orient the A & B ports on the manifold to the respective valve solenoids.

Adapt D05 valve to D03 manifold • style A

Valve mtg: UNC 0.25-20 x 0.50 DP or
Metric M6-1.0mm ISO 6H x [12.7] DP

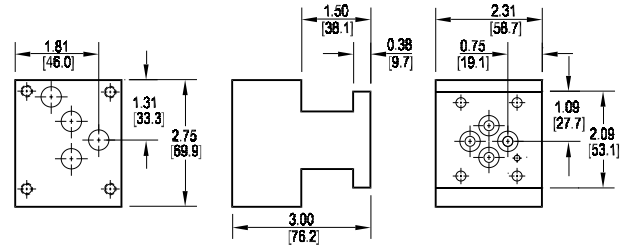
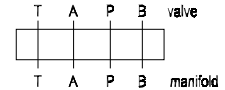
Adaptor mounting hardware is supplied.
See page 98 for itemized list.



Adapt D05 valve to D03 manifold • style B

Valve mtg: UNC 0.25-20 x 0.75 DP or
Metric M6-1.0mm ISO 6H x [19.1] DP

Adaptor mounting hardware is supplied.
See page 98 for itemized list.



Specifications, descriptions, and dimensional data are subject to correction or change without notice or incurring obligation.
Download latest catalog page revisions at www.daman.com.

Ordering Information

Material	Valve Pattern	Manifold Pattern	Product Type	Port Orientation	Style	Bolt Threads
----------	---------------	------------------	--------------	------------------	-------	--------------

Material	
A	Aluminum - 6061-T6 3000† psi • 20.7 MPa
D	Ductile Iron - D4512 5000† psi • 34.5 MPa
† Working pressure should be considered in accordance with ISO 4413 to determine appropriate material type.	

Manifold Pattern	
D03	ISO 4401-03-02 NFPA T3.5.1-D03 See Tech Information

Port Orientation	
AB	A _v common to A _m B _v common to B _m
BA	A _v common to B _m B _v common to A _m S04 valve pattern only.

Bolt Threads	
	Omit for inch (UNC) bolt kit.
M	Metric (ISO 6H) bolt kit

Valve Pattern	
D02	ISO 4401-02-01 NFPA T3.5.1-D02 See Tech Information
D05	ISO 4401-05-04 NFPA T3.5.1-D05 See Tech Information
S04	ISO 10372-04-04 Daman standard S04 See Tech Information

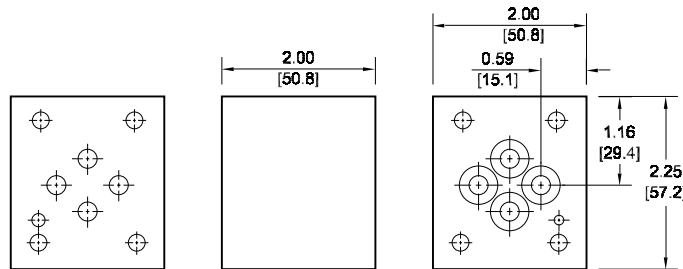
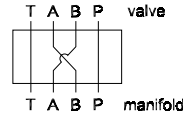
Product Type	
VA	Valve Adaptor

D05-D03 Style	
Required with D05 valve pattern. Omit with D02 or S04 patterns.	
A	Style A Low height, wide design
B	Style B Tall height, narrow design

Valve Adaptors for D03 Manifolds

D03 A & B Port Swap Block • (BA oriented)

Adaptor hardware / interface seal kit is supplied. See page 98 for itemized list.



Specifications, descriptions, and dimensional data are subject to correction or change without notice or incurring obligation. Download latest catalog page revisions at www.daman.com.

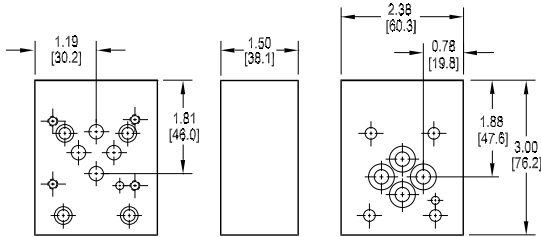
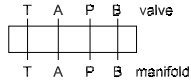
Ordering Information

Material	Valve Pattern	Manifold Pattern	Product Type	Port Orientation	Bolt Threads																														
<table border="1"> <thead> <tr> <th colspan="2">Material</th> </tr> </thead> <tbody> <tr> <td>A</td> <td>Aluminum - 6061-T6 3000[†] psi • 20.7 MPa</td> </tr> <tr> <td>D</td> <td>Ductile Iron - D4512 5000[†] psi • 34.5 MPa</td> </tr> <tr> <td colspan="2">[†] Working pressure should be considered in accordance with ISO 4413 to determine appropriate material type.</td> </tr> </tbody> </table>	Material		A	Aluminum - 6061-T6 3000 [†] psi • 20.7 MPa	D	Ductile Iron - D4512 5000 [†] psi • 34.5 MPa	[†] Working pressure should be considered in accordance with ISO 4413 to determine appropriate material type.		<table border="1"> <thead> <tr> <th colspan="2">Valve Pattern</th> </tr> </thead> <tbody> <tr> <td>D03</td> <td>ISO 4401-03-02 NFPA T3.5.1-D03 See Tech Information</td> </tr> </tbody> </table>	Valve Pattern		D03	ISO 4401-03-02 NFPA T3.5.1-D03 See Tech Information	<table border="1"> <thead> <tr> <th colspan="2">Manifold Pattern</th> </tr> </thead> <tbody> <tr> <td>D03</td> <td>ISO 4401-03-02 NFPA T3.5.1-D03 See Tech Information</td> </tr> </tbody> </table>	Manifold Pattern		D03	ISO 4401-03-02 NFPA T3.5.1-D03 See Tech Information	<table border="1"> <thead> <tr> <th colspan="2">Product Type</th> </tr> </thead> <tbody> <tr> <td>VA</td> <td>Valve Adaptor</td> </tr> </tbody> </table>	Product Type		VA	Valve Adaptor	<table border="1"> <thead> <tr> <th colspan="2">Port Orientation</th> </tr> </thead> <tbody> <tr> <td>BA</td> <td>B_V common to A_M A_V common to B_M D03 valve pattern only.</td> </tr> </tbody> </table>	Port Orientation		BA	B _V common to A _M A _V common to B _M D03 valve pattern only.	<table border="1"> <thead> <tr> <th colspan="2">Bolt Threads</th> </tr> </thead> <tbody> <tr> <td colspan="2">Omit: Mounting holes sized for inch (UNC) bolts.</td> </tr> <tr> <td>M</td> <td>Mounting holes sized for Metric (ISO 6H) bolts.</td> </tr> </tbody> </table>	Bolt Threads		Omit: Mounting holes sized for inch (UNC) bolts.		M	Mounting holes sized for Metric (ISO 6H) bolts.
Material																																			
A	Aluminum - 6061-T6 3000 [†] psi • 20.7 MPa																																		
D	Ductile Iron - D4512 5000 [†] psi • 34.5 MPa																																		
[†] Working pressure should be considered in accordance with ISO 4413 to determine appropriate material type.																																			
Valve Pattern																																			
D03	ISO 4401-03-02 NFPA T3.5.1-D03 See Tech Information																																		
Manifold Pattern																																			
D03	ISO 4401-03-02 NFPA T3.5.1-D03 See Tech Information																																		
Product Type																																			
VA	Valve Adaptor																																		
Port Orientation																																			
BA	B _V common to A _M A _V common to B _M D03 valve pattern only.																																		
Bolt Threads																																			
Omit: Mounting holes sized for inch (UNC) bolts.																																			
M	Mounting holes sized for Metric (ISO 6H) bolts.																																		

Valve Adaptors for D03 Manifolds

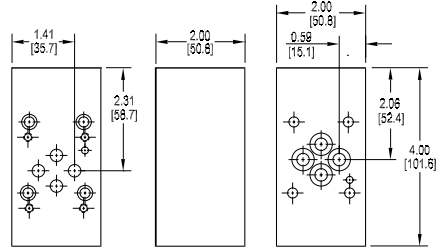
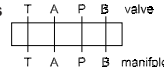
Rotate D03 Valve 90°

Adaptor hardware / interface seal kit is supplied. See page 98 for itemized list.



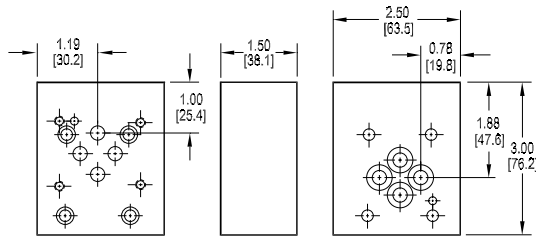
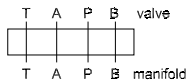
Rotate D03 Valve 180°

Adaptor hardware / interface seal kit is supplied. See page 98 for itemized list.



Rotate D03 Valve 270°

Adaptor hardware / interface seal kit is supplied. See page 98 for itemized list.



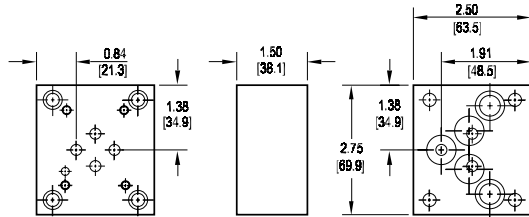
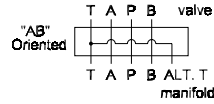
Ordering Information

Material	Valve Pattern	Manifold Pattern	Product Type	Port Orientation	Rotation																																
<table border="1"> <thead> <tr> <th colspan="2">Material</th> </tr> </thead> <tbody> <tr> <td>A</td> <td>Aluminum - 6061-T6 3000[†] psi • 20.7 MPa</td> </tr> <tr> <td>D</td> <td>Ductile Iron - D4512 5000[†] psi • 34.5 MPa</td> </tr> <tr> <td colspan="2">[†] Working pressure should be considered in accordance with ISO 4413 to determine appropriate material type.</td> </tr> </tbody> </table>	Material		A	Aluminum - 6061-T6 3000 [†] psi • 20.7 MPa	D	Ductile Iron - D4512 5000 [†] psi • 34.5 MPa	[†] Working pressure should be considered in accordance with ISO 4413 to determine appropriate material type.		<table border="1"> <thead> <tr> <th colspan="2">Valve Pattern</th> </tr> </thead> <tbody> <tr> <td>D03</td> <td>ISO 4401-03-02 NFPA T3.5.1-D03 See Tech Information</td> </tr> </tbody> </table>	Valve Pattern		D03	ISO 4401-03-02 NFPA T3.5.1-D03 See Tech Information	<table border="1"> <thead> <tr> <th colspan="2">Manifold Pattern</th> </tr> </thead> <tbody> <tr> <td>D03</td> <td>ISO 4401-03-02 NFPA T3.5.1-D03 See Tech Information</td> </tr> </tbody> </table>	Manifold Pattern		D03	ISO 4401-03-02 NFPA T3.5.1-D03 See Tech Information	<table border="1"> <thead> <tr> <th colspan="2">Product Type</th> </tr> </thead> <tbody> <tr> <td>VA</td> <td>Valve Adaptor</td> </tr> </tbody> </table>	Product Type		VA	Valve Adaptor	<table border="1"> <thead> <tr> <th colspan="2">Port Orientation</th> </tr> </thead> <tbody> <tr> <td>AB</td> <td>A_V common to A_M B_V common to B_M</td> </tr> </tbody> </table>	Port Orientation		AB	A _V common to A _M B _V common to B _M	<table border="1"> <thead> <tr> <th colspan="2">Rotation</th> </tr> </thead> <tbody> <tr> <td>090</td> <td>90° CCW</td> </tr> <tr> <td>180</td> <td>180° CCW</td> </tr> <tr> <td>270</td> <td>270° CCW</td> </tr> </tbody> </table>	Rotation		090	90° CCW	180	180° CCW	270	270° CCW
Material																																					
A	Aluminum - 6061-T6 3000 [†] psi • 20.7 MPa																																				
D	Ductile Iron - D4512 5000 [†] psi • 34.5 MPa																																				
[†] Working pressure should be considered in accordance with ISO 4413 to determine appropriate material type.																																					
Valve Pattern																																					
D03	ISO 4401-03-02 NFPA T3.5.1-D03 See Tech Information																																				
Manifold Pattern																																					
D03	ISO 4401-03-02 NFPA T3.5.1-D03 See Tech Information																																				
Product Type																																					
VA	Valve Adaptor																																				
Port Orientation																																					
AB	A _V common to A _M B _V common to B _M																																				
Rotation																																					
090	90° CCW																																				
180	180° CCW																																				
270	270° CCW																																				

Valve Adaptors for D05 Manifolds

Adapt D03 valve to D05 manifold • AB oriented

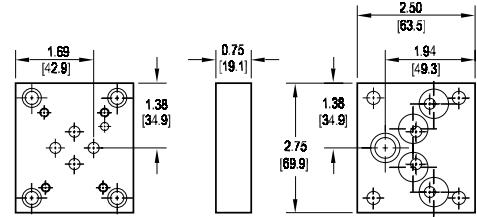
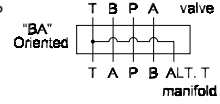
Valve mtg: UNC #10-24 x 0.50 DP or
Metric M5-0.8mm ISO 6H x [12.7] DP
Adaptor mounting hardware is supplied.
See page 98 for itemized list.



This adaptor permits the installation of a D03 valve on a D05 manifold. This adaptor, unlike *D03D05VABA*, properly orients the A & B ports on the manifold to the respective valve solenoids.

Adapt D03 valve to D05 manifold • BA oriented

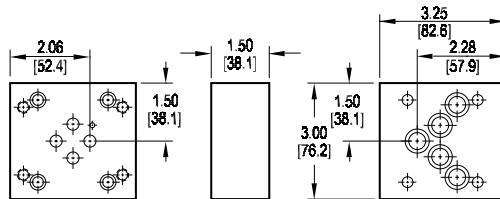
Valve mtg: UNC #10-24 x 0.44 DP or
Metric M5 x 0.8mm ISO 6H x [11] DP
Adaptor mounting hardware is supplied.
See page 98 for itemized list.



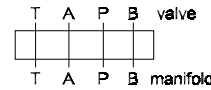
This adaptor permits the installation of a D03 valve on a D05 manifold. This adaptor, while low in cost, does not orient the A & B ports on the manifold to the respective valve solenoids.

Adapt S04 valve to D05 manifold • AB oriented

Valve mtg: UNC 0.31-18 x 0.63 DP or
Metric M8 x 1.25mm ISO 6H x [15.9] DP
Adaptor mounting hardware is supplied.
See page 98 for itemized list.



This adaptor properly orients the A & B ports on the manifold to the respective valve solenoids.



Specifications, descriptions, and dimensional data are subject to correction or change without notice or incurring obligation. Download latest catalog page revisions at www.daman.com.

Ordering Information

Material	Valve Pattern	Manifold Pattern	Product Type	Port Orientation	Bolt Threads
----------	---------------	------------------	--------------	------------------	--------------

Material	
A	Aluminum - 6061-T6 3000† psi • 20.7 MPa
D	Ductile Iron - D4512 5000† psi • 34.5 MPa
† Working pressure should be considered in accordance with ISO 4413 to determine appropriate material type.	

Manifold Pattern	
D05	ISO 4401-05-04 NFPA T3.5.1-D05 See Tech Information

Port Orientation	
AB	A _v common to A _m B _v common to B _m
BA	B _v common to A _m A _v common to B _m D03 valve pattern only.

Valve Pattern	
D03	ISO 4401-03-02 NFPA T3.5.1-D03 See Tech Information
S04	ISO 10372-04-04 Daman standard S04 See Tech Information

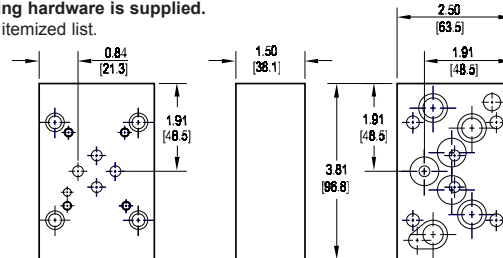
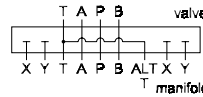
Product Type	
VA	Valve Adaptor

Bolt Threads	
Omit for inch (UNC) bolt kit.	
M	Metric (ISO 6H) bolt kit

Valve Adaptors for D05 Manifolds with Pilot Ports

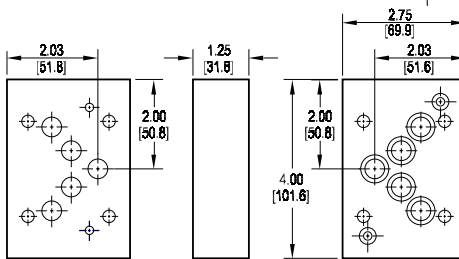
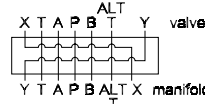
Adapt D03 valve to D05H manifold

Valve mtg: #10-24 UNC x 0.50 DP or
Metric M5-0.8mm ISO 6H x [12.7] DP
Adaptor mounting hardware is supplied.
See page 98 for itemized list.



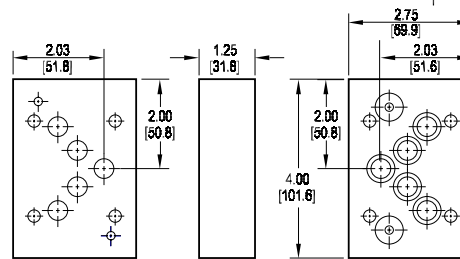
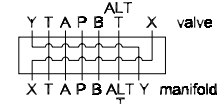
Adapt D05HE valve to D05H manifold

Adaptor interface seal kit is supplied.
See page 98 for itemized list.



Adapt D05H valve to D05HE manifold

Adaptor interface seal kit is supplied.
See page 98 for itemized list.



Specifications, descriptions, and dimensional data are subject to correction or change without notice or incurring obligation.
Download latest catalog page revisions at www.daman.com.

Ordering Information

Material	Valve Pattern	Manifold Pattern	Product Type	Port Orientation	Bolt Threads
----------	---------------	------------------	--------------	------------------	--------------

Material	
A	Aluminum - 6061-T6 3000† psi • 20.7 MPa
D	Ductile Iron - D4512 5000† psi • 34.5 MPa

† Working pressure should be considered in accordance with ISO 4413 to determine appropriate material type.

Manifold Pattern	
See Tech Information	
D05H	ISO 4401-05-05 NFPA T3.5.1-D05 Alt A & B
D05HE	ISO 4401-05-05 NFPA T3.5.1-D05 Alt A

Port Orientation	
AB	A _V common to A _m B _V common to B _m

Valve Pattern	
See Tech Information	
D03	ISO 4401-03-02 NFPA T3.5.1-D03
D05H	(USA std) NFPA T3.5.1-D05 Alt B
D05HE	ISO 4401-05-05 NFPA T3.5.1-D05 Alt A

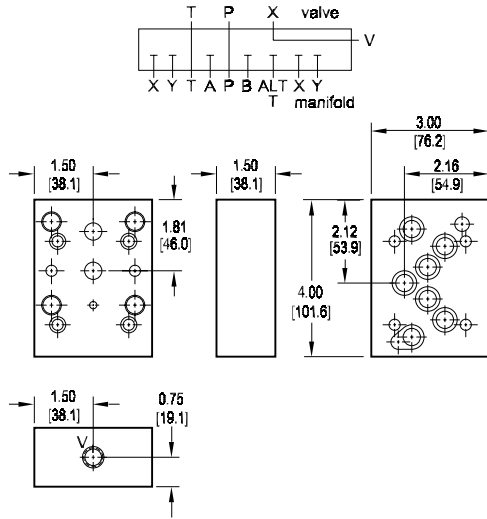
Product Type	
VA	Valve Adaptor

Bolt Threads	
Omit for inch (UNC) bolt kit.	
M	Metric (ISO 6H) bolt kit

Relief Valve Adaptors for D05(H) Manifolds

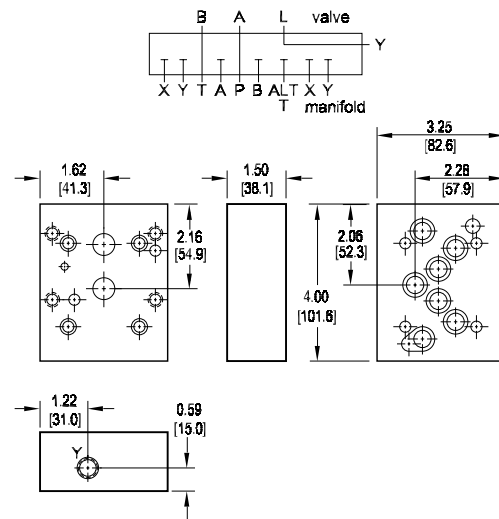
Adapt I06 (NFPA R06) valve to D05H manifold

Valve mtg: UNC 0.50-13 x 1.00 DP or
Metric M12 x 1.75mm ISO 6H x [25.4] DP
Vent port: 0.25 NPTF or 0.25 BSPT (M option).
Adaptor mounting hardware is supplied.
See page 98 for itemized list.



Adapt P06 valve to D05H manifold

Valve mtg: UNC 0.38-16 x 1.00 DP or
Metric M10-1.5mm ISO 6H x [25.4] DP
Vent port: 0.25 NPTF or 0.25 BSPT (M option).
Adaptor mounting hardware is supplied.
See page 98 for itemized list.



Specifications, descriptions, and dimensional data are subject to correction or change without notice or incurring obligation. Download latest catalog page revisions at www.daman.com.

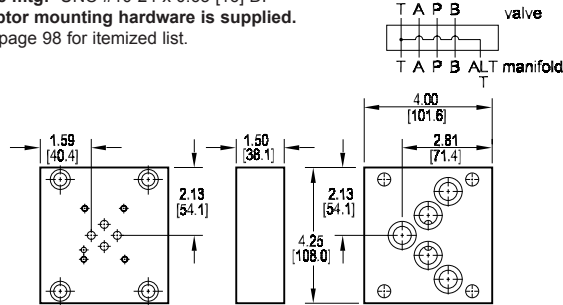
Ordering Information

Material	Valve Pattern	Manifold Pattern	Product Type	Bolt Threads																												
<table border="1"> <thead> <tr> <th colspan="2">Material</th> </tr> </thead> <tbody> <tr> <td>A</td> <td>Aluminum - 6061-T6 3000† psi • 20.7 MPa</td> </tr> <tr> <td>D</td> <td>Ductile Iron - D4512 5000† psi • 34.5 MPa</td> </tr> <tr> <td colspan="2">† Working pressure should be considered in accordance with ISO 4413 to determine appropriate material type.</td> </tr> </tbody> </table>	Material		A	Aluminum - 6061-T6 3000† psi • 20.7 MPa	D	Ductile Iron - D4512 5000† psi • 34.5 MPa	† Working pressure should be considered in accordance with ISO 4413 to determine appropriate material type.		<table border="1"> <thead> <tr> <th colspan="2">Valve Pattern</th> </tr> </thead> <tbody> <tr> <td>I06</td> <td>ISO 6264-06-09-*-97 NFPA T3.5.1-R06 See Tech Information</td> </tr> <tr> <td>P06</td> <td>ISO 6264-06-07-*-97 ISO 5781-06-07-0-00 NFPA T3.5.1-RP06 See Tech Information</td> </tr> </tbody> </table>	Valve Pattern		I06	ISO 6264-06-09-*-97 NFPA T3.5.1-R06 See Tech Information	P06	ISO 6264-06-07-*-97 ISO 5781-06-07-0-00 NFPA T3.5.1-RP06 See Tech Information	<table border="1"> <thead> <tr> <th colspan="2">Manifold Pattern</th> </tr> </thead> <tbody> <tr> <td>D05H</td> <td>ISO 4401-05-05 NFPA T3.5.1-D05 Alt A & B See Tech Information</td> </tr> </tbody> </table>	Manifold Pattern		D05H	ISO 4401-05-05 NFPA T3.5.1-D05 Alt A & B See Tech Information	<table border="1"> <thead> <tr> <th colspan="2">Product Type</th> </tr> </thead> <tbody> <tr> <td>RVA</td> <td>Relief Valve Adaptor</td> </tr> </tbody> </table>	Product Type		RVA	Relief Valve Adaptor	<table border="1"> <thead> <tr> <th colspan="2">Bolt Threads</th> </tr> </thead> <tbody> <tr> <td colspan="2">Omit for inch (UNC) bolt kit.</td> </tr> <tr> <td>M</td> <td>Metric (ISO 6H) bolt kit</td> </tr> </tbody> </table>	Bolt Threads		Omit for inch (UNC) bolt kit.		M	Metric (ISO 6H) bolt kit
Material																																
A	Aluminum - 6061-T6 3000† psi • 20.7 MPa																															
D	Ductile Iron - D4512 5000† psi • 34.5 MPa																															
† Working pressure should be considered in accordance with ISO 4413 to determine appropriate material type.																																
Valve Pattern																																
I06	ISO 6264-06-09-*-97 NFPA T3.5.1-R06 See Tech Information																															
P06	ISO 6264-06-07-*-97 ISO 5781-06-07-0-00 NFPA T3.5.1-RP06 See Tech Information																															
Manifold Pattern																																
D05H	ISO 4401-05-05 NFPA T3.5.1-D05 Alt A & B See Tech Information																															
Product Type																																
RVA	Relief Valve Adaptor																															
Bolt Threads																																
Omit for inch (UNC) bolt kit.																																
M	Metric (ISO 6H) bolt kit																															

Valve Adaptors for D06 Manifolds

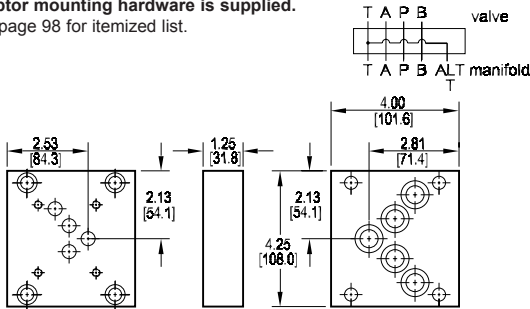
Adapt D03 valve to D06 manifold

Valve mtg: UNC #10-24 x 0.63 [16] DP
 Adaptor mounting hardware is supplied.
 See page 98 for itemized list.



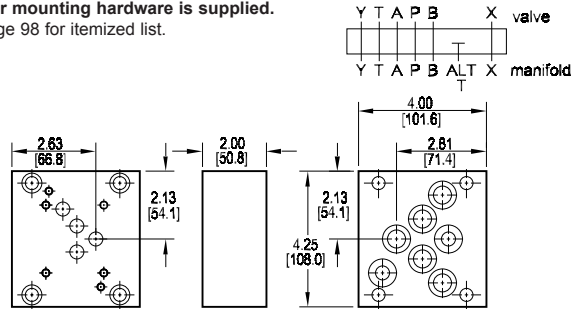
Adapt D05 valve to D06 manifold

Valve mtg: UNC 0.25-20 x 0.56 [14.2] DP
 Adaptor mounting hardware is supplied.
 See page 98 for itemized list.



Adapt D05H valve to D06H manifold

Valve mtg: UNC 0.25-20 x 0.50 [12.7] DP
 Adaptor mounting hardware is supplied.
 See page 98 for itemized list.



Specifications, descriptions, and dimensional data are subject to correction or change without notice or incurring obligation. Download latest catalog page revisions at www.daman.com.

Ordering Information

Material	Valve Pattern	Manifold Pattern	Product Type	Port Orientation
----------	---------------	------------------	--------------	------------------

Material	
A	Aluminum - 6061-T6 3000† psi • 20.7 MPa
D	Ductile Iron - D4512 5000† psi • 34.5 MPa

† Working pressure should be considered in accordance with ISO 4413 to determine appropriate material type.

Manifold Pattern	
See Tech Information	
D06	NFPA T3.5.1-D06 (X & Y omitted)
D06H	NFPA T3.5.1-D06 (X & Y included)

Port Orientation	
AB	A _V common to A _M B _V common to B _M

Valve Pattern	
See Tech Information	
D03	ISO 4401-03-02 NFPA T3.5.1-D03
D05	ISO 4401-05-04 NFPA T3.5.1-D05
D05H	(USA std) NFPA T3.5.1-D05 Alt B

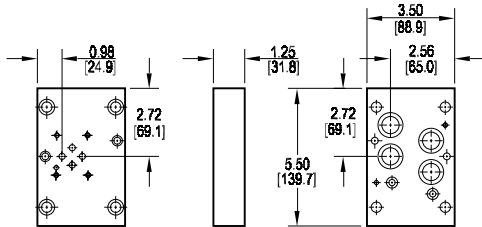
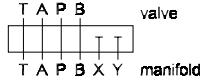
Product Type	
VA	Valve Adaptor

Valve Adaptors for D07 Manifolds

Adapt D03 valve to D07 manifold

Valve mtg: UNC #10-24 x 0.44 DP or
Metric M5-0.8mm ISO 6H x [11.1] DP

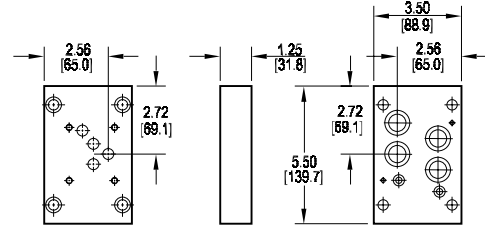
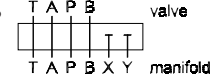
Adaptor mounting hardware is supplied.
See page 98 for itemized list.



Adapt D05 valve to D07 manifold

Valve mtg: UNC 0.25-20 x 0.50 DP or
Metric M6-1.0mm ISO 6H x [12.7] DP

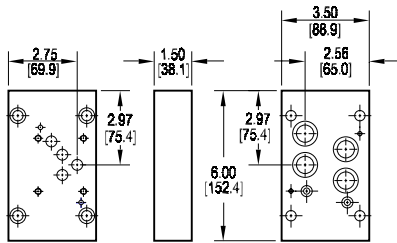
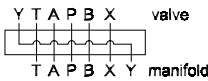
Adaptor mounting hardware is supplied.
See page 98 for itemized list.



Adapt D05H valve to D07 manifold

Valve mtg: UNC 0.25-20 x 0.50 DP or
Metric M6-1.0mm ISO 6H x [12.7] DP

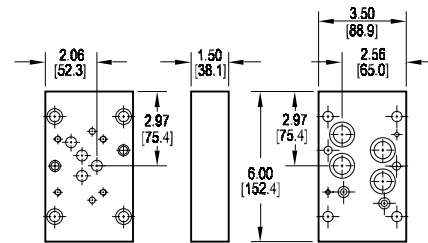
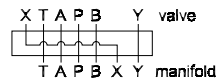
Adaptor mounting hardware is supplied.
See page 98 for itemized list.



Adapt D05HE valve to D07 manifold

Valve mtg: UNC 0.25-20 x 0.50 DP or
Metric M6-1.0mm ISO 6H x [12.7] DP

Adaptor mounting hardware is supplied.
See page 98 for itemized list.



Specifications, descriptions, and dimensional data are subject to correction or change without notice or incurring obligation. Download latest catalog page revisions at www.daman.com.

Ordering Information

Material	Valve Pattern	Manifold Pattern	Product Type	Port Orientation	Bolt Threads
----------	---------------	------------------	--------------	------------------	--------------

Material	
A	Aluminum - 6061-T6 3000† psi • 20.7 MPa
D	Ductile Iron - D4512 5000† psi • 34.5 MPa
† Working pressure should be considered in accordance with ISO 4413 to determine appropriate material type.	

Manifold Pattern	
D07	ISO 4401-07-06 NFPA T3.5.1-D07 See Tech Information

Port Orientation	
AB	A _v common to A _m B _v common to B _m

Valve Pattern	
See Tech Information	
D03	ISO 4401-03-02 NFPA T3.5.1-D03
D05	ISO 4401-05-04 NFPA T3.5.1-D05
D05H	(USA std) NFPA T3.5.1-D05 Alt B
D05HE	ISO 4401-05-05 NFPA T3.5.1-D05 Alt A

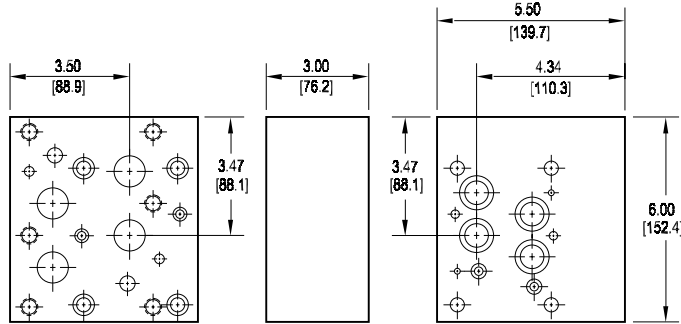
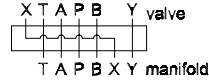
Product Type	
VA	Valve Adaptor

Bolt Threads	
Omit for inch (UNC) bolt kit.	
M	Metric (ISO 6H) bolt kit

Valve Adaptors for D07 Manifolds

Adapt D08 valve to D07 manifold

Valve mtg: UNC 0.50-13 x 1.19 DP or
Metric M12-1.75mm ISO 6H x [30.2] DP
Adaptor mounting hardware is supplied.
See page 98 for itemized list.



Note: This adaptor is too wide to use on any position other than station one of a multi-station manifold.

Specifications, descriptions, and dimensional data are subject to correction or change without notice or incurring obligation. Download latest catalog page revisions at www.daman.com.

Ordering Information

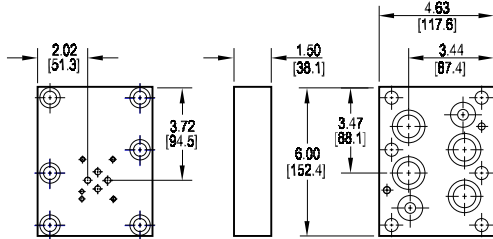
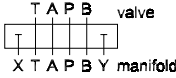
Material	Valve Pattern	Manifold Pattern	Product Type	Port Orientation	Bolt Threads																														
<table border="1"> <thead> <tr> <th colspan="2">Material</th> </tr> </thead> <tbody> <tr> <td>A</td> <td>Aluminum - 6061-T6 3000† psi • 20.7 MPa</td> </tr> <tr> <td>D</td> <td>Ductile Iron - D4512 5000† psi • 34.5 MPa</td> </tr> <tr> <td colspan="2">† Working pressure should be considered in accordance with ISO 4413 to determine appropriate material type.</td> </tr> </tbody> </table>	Material		A	Aluminum - 6061-T6 3000† psi • 20.7 MPa	D	Ductile Iron - D4512 5000† psi • 34.5 MPa	† Working pressure should be considered in accordance with ISO 4413 to determine appropriate material type.		<table border="1"> <thead> <tr> <th colspan="2">Valve Pattern</th> </tr> </thead> <tbody> <tr> <td>D08</td> <td>ISO 4401-08-07 NFPA T3.5.1-D08 See Tech Information</td> </tr> </tbody> </table>	Valve Pattern		D08	ISO 4401-08-07 NFPA T3.5.1-D08 See Tech Information	<table border="1"> <thead> <tr> <th colspan="2">Manifold Pattern</th> </tr> </thead> <tbody> <tr> <td>D07</td> <td>ISO 4401-07-06 NFPA T3.5.1-D07 See Tech Information</td> </tr> </tbody> </table>	Manifold Pattern		D07	ISO 4401-07-06 NFPA T3.5.1-D07 See Tech Information	<table border="1"> <thead> <tr> <th colspan="2">Product Type</th> </tr> </thead> <tbody> <tr> <td>VA</td> <td>Valve Adaptor</td> </tr> </tbody> </table>	Product Type		VA	Valve Adaptor	<table border="1"> <thead> <tr> <th colspan="2">Port Orientation</th> </tr> </thead> <tbody> <tr> <td>AB</td> <td>A_V common to A_M B_V common to B_M</td> </tr> </tbody> </table>	Port Orientation		AB	A _V common to A _M B _V common to B _M	<table border="1"> <thead> <tr> <th colspan="2">Bolt Threads</th> </tr> </thead> <tbody> <tr> <td colspan="2">Omit for inch (UNC) bolt kit.</td> </tr> <tr> <td>M</td> <td>Metric (ISO 6H) bolt kit</td> </tr> </tbody> </table>	Bolt Threads		Omit for inch (UNC) bolt kit.		M	Metric (ISO 6H) bolt kit
Material																																			
A	Aluminum - 6061-T6 3000† psi • 20.7 MPa																																		
D	Ductile Iron - D4512 5000† psi • 34.5 MPa																																		
† Working pressure should be considered in accordance with ISO 4413 to determine appropriate material type.																																			
Valve Pattern																																			
D08	ISO 4401-08-07 NFPA T3.5.1-D08 See Tech Information																																		
Manifold Pattern																																			
D07	ISO 4401-07-06 NFPA T3.5.1-D07 See Tech Information																																		
Product Type																																			
VA	Valve Adaptor																																		
Port Orientation																																			
AB	A _V common to A _M B _V common to B _M																																		
Bolt Threads																																			
Omit for inch (UNC) bolt kit.																																			
M	Metric (ISO 6H) bolt kit																																		

Valve Adaptors for D08 Manifolds

Adapt D03 valve to D08 manifold

Valve mtg: UNC #10-24 x 0.50 DP or
Metric M5-0.8mm ISO 6H x [12.7] DP

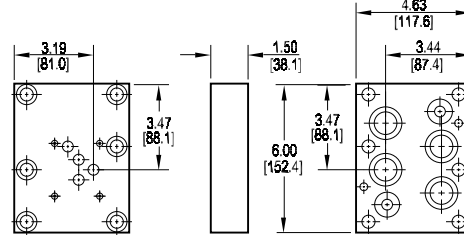
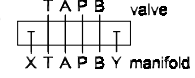
Adaptor mounting hardware is supplied.
See page 99 for itemized list.



Adapt D05 valve to D08 manifold

Valve mtg: UNC 0.25-20 x 0.50 DP or
Metric M6-1.0mm ISO 6H x [12.7] DP

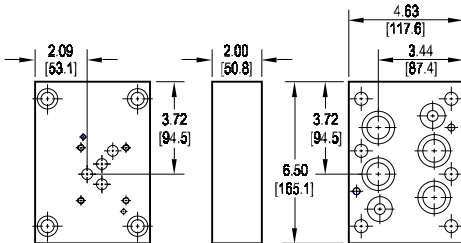
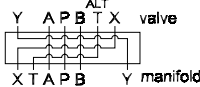
Adaptor mounting hardware is supplied.
See page 99 for itemized list.



Adapt D05H valve to D08 manifold

Valve mtg: UNC 0.25-20 x 0.75 DP or
Metric M6-1.0mm ISO 6H x [19.1] DP

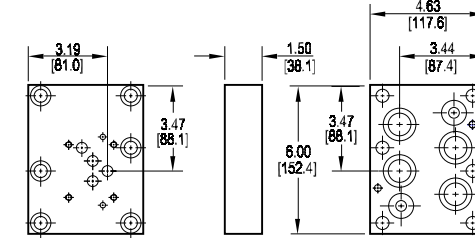
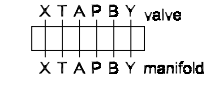
Adaptor mounting hardware is supplied.
See page 99 for itemized list.



Adapt D05HE valve to D08 manifold

Valve mtg: 0.25-20 UNC x 0.50 DP or
Metric M6-1.0mm ISO 6H x [12.7] DP

Adaptor mounting hardware is supplied.
See page 99 for itemized list.



Specifications, descriptions, and dimensional data are subject to correction or change without notice or incurring obligation. Download latest catalog page revisions at www.daman.com.

Ordering Information

Material	Valve Pattern	Manifold Pattern	Product Type	Port Orientation	Bolt Threads
----------	---------------	------------------	--------------	------------------	--------------

Material	
A	Aluminum - 6061-T6 3000† psi • 20.7 MPa
D	Ductile Iron - D4512 5000† psi • 34.5 MPa

† Working pressure should be considered in accordance with ISO 4413 to determine appropriate material type.

Manifold Pattern	
D08	ISO 4401-08-07 NFPA T3.5.1-D08 See Tech Information

Port Orientation	
AB	A _v common to A _m B _v common to B _m

Valve Pattern	
See Tech Information	
D03	ISO 4401-03-02 NFPA T3.5.1-D03
D05	ISO 4401-05-04 NFPA T3.5.1-D05
D05H	(USA std) NFPA T3.5.1-D05 Alt B
D05HE	ISO 4401-05-05 NFPA T3.5.1-D05 Alt A

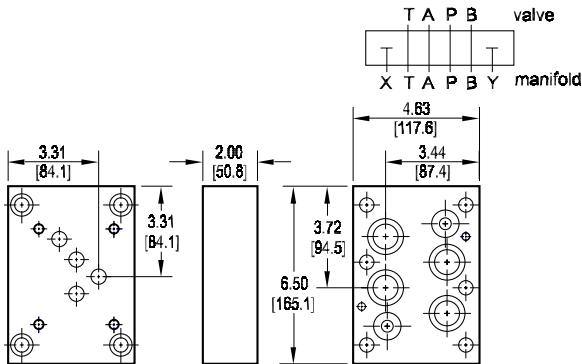
Product Type	
VA	Valve Adaptor

Bolt Threads	
Omit for inch (UNC) bolt kit.	
M	Metric (ISO 6H) bolt kit

Valve Adaptors for D08 Manifolds

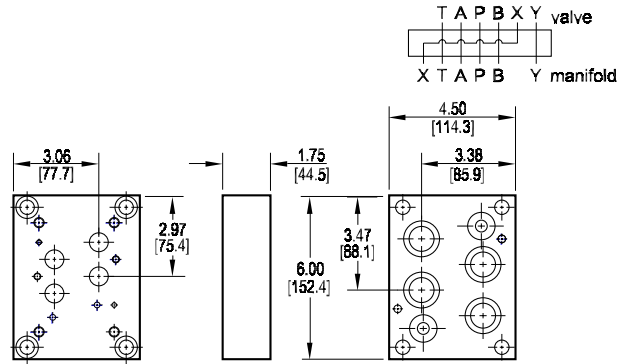
Adapt D06 valve to D08 manifold

Valve mtg: UNC 0.38-16 x 0.75 DP or
Metric M10-1.5mm ISO 6H x [19.1] DP
Adaptor mounting hardware is supplied.
See page 99 for itemized list.



Adapt D07 valve to D08 manifold

Valve mtg: UNC 0.38-16 x 0.75 DP or
Metric M10-1.5mm ISO 6H x [19.1] DP
Adaptor mounting hardware is supplied.
See page 99 for itemized list.



Specifications, descriptions, and dimensional data are subject to correction or change without notice or incurring obligation. Download latest catalog page revisions at www.daman.com.

Ordering Information

Material	Valve Pattern	Manifold Pattern	Product Type	Port Orientation	Bolt Threads
----------	---------------	------------------	--------------	------------------	--------------

Material	
A	Aluminum - 6061-T6 3000† psi • 20.7 MPa
D	Ductile Iron - D4512 5000† psi • 34.5 MPa

† Working pressure should be considered in accordance with ISO 4413 to determine appropriate material type.

Manifold Pattern	
D08	ISO 4401-08-07 NFPA T3.5.1-D08 See Tech Information

Port Orientation	
AB	A _V common to A _M B _V common to B _M

Product Type	
VA	Valve Adaptor

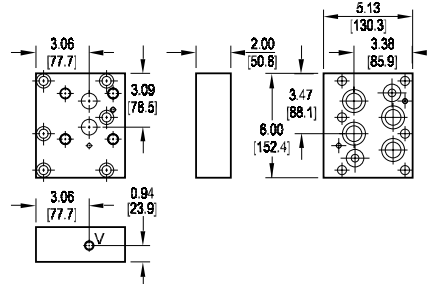
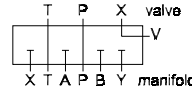
Valve Pattern	
D06	NFPA T3.5.1-D06 See Tech Information
D07	ISO 4401-07-06 NFPA T3.5.1-D07 See Tech Information

Bolt Threads	
Omit for inch (UNC) bolt kit.	
M	Metric (ISO 6H) bolt kit

Relief Valve Adaptors for D08 Manifolds

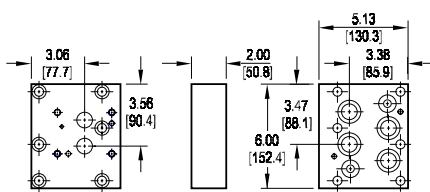
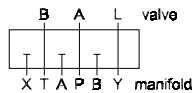
Adapt I08 (NFPA RV08) valve to D08 manifold

Valve mtg: UNC 0.63-11 x 0.94 DP or
Metric M16-2mm ISO 6H x [23.8] DP
Vent port: 0.25 NPTF or 0.25 BSPT (M option).
Adaptor mounting hardware is supplied.
See page 99 for itemized list.



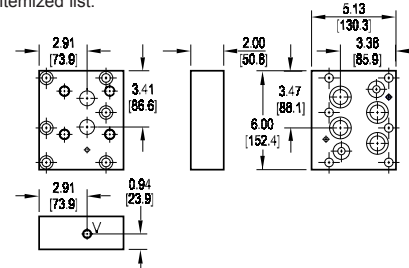
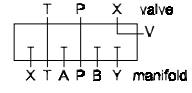
Adapt P08 valve to D08 manifold

Valve mtg: UNC 0.38-16 x 0.75 DP or
Metric M10-1.5mm ISO 6H x [19.1] DP
Adaptor mounting hardware is supplied.
See page 99 for itemized list.



Adapt R08 valve to D08 manifold

Valve mtg: UNC 0.63-11 x 0.94 DP or
Metric M16-2.0mm ISO 6H x [23.8] DP
Vent port: 0.25 NPTF or 0.25 BSPT (M option).
Adaptor mounting hardware is supplied.
See page 99 for itemized list.



Specifications, descriptions, and dimensional data are subject to correction or change without notice or incurring obligation. Download latest catalog page revisions at www.daman.com.

Ordering Information

Material	Valve Pattern	Manifold Pattern	Product Type	Bolt Threads
----------	---------------	------------------	--------------	--------------

Material	
A	Aluminum - 6061-T6 3000† psi • 20.7 MPa
D	Ductile Iron - D4512 5000† psi • 34.5 MPa
† Working pressure should be considered in accordance with ISO 4413 to determine appropriate material type.	

Manifold Pattern	
D08	ISO 4401-08-07 NFPA T3.5.1-D08 See Tech Information

Bolt Threads	
Omit for inch (UNC) bolt kit.	
M	Metric (ISO 6H) bolt kit

Valve Pattern	
See Tech Information	
I08	NFPA T3.5.1-RV08
P08	ISO 6264-08-11-~*97 ISO 5781-08-10-0-00 NFPA T3.5.1-RP08
R08	ISO 6264-06-09-~*97 NFPA T3.5.1-R08

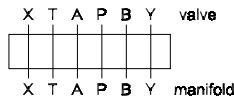
Product Type	
RVA	Relief Valve Adaptor

Valve Adaptors for D10 Manifolds

Adapt D07 valve to D10 manifold

Valve mtg: 0.25-20 UNC x 0.75 DP and
0.38-16 UNC x 1.00 DP or
Metric M6-1.0mm ISO 6H x [19.1] DP and
M10-1.5mm ISO 6H x [25.4] DP

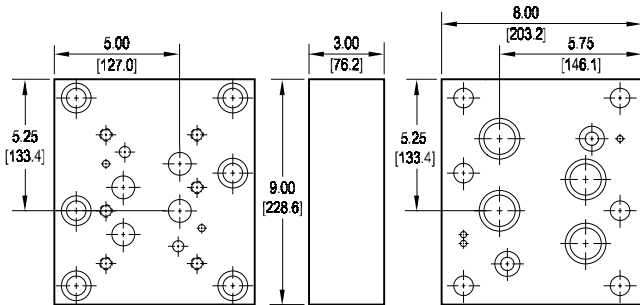
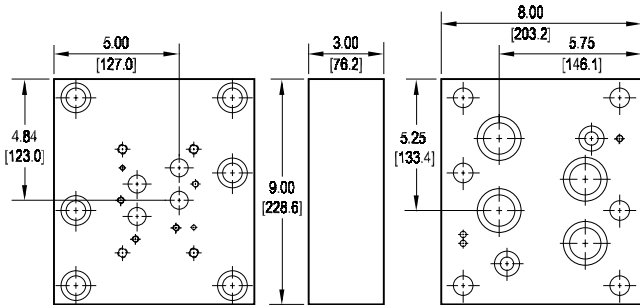
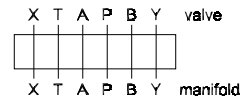
Adaptor mounting hardware is supplied.
See page 99 for itemized list.



Adapt D08 valve to D10 manifold

Valve mtg: UNC 0.50-13 x 1.19 DP or
Metric M12-1.75mm ISO 6H x [30.2] DP

Adaptor mounting hardware is supplied.
See page 99 for itemized list.



Specifications, descriptions, and dimensional data are subject to correction or change without notice or incurring obligation. Download latest catalog page revisions at www.daman.com.

Ordering Information

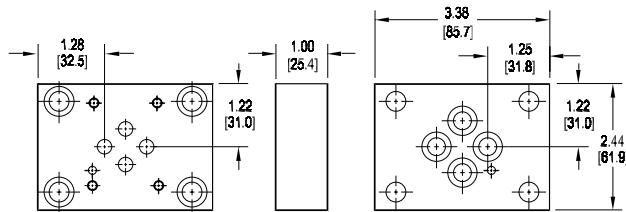
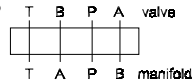
Material	Valve Pattern	Manifold Pattern	Product Type	Port Orientation	Bolt Threads																																
<table border="1"> <thead> <tr> <th colspan="2">Material</th> </tr> </thead> <tbody> <tr> <td>A</td> <td>Aluminum - 6061-T6 3000† psi • 20.7 MPa</td> </tr> <tr> <td>D</td> <td>Ductile Iron - D4512 5000† psi • 34.5 MPa</td> </tr> <tr> <td colspan="2">† Working pressure should be considered in accordance with ISO 4413 to determine appropriate material type.</td> </tr> </tbody> </table>	Material		A	Aluminum - 6061-T6 3000† psi • 20.7 MPa	D	Ductile Iron - D4512 5000† psi • 34.5 MPa	† Working pressure should be considered in accordance with ISO 4413 to determine appropriate material type.		<table border="1"> <thead> <tr> <th colspan="2">Valve Pattern</th> </tr> </thead> <tbody> <tr> <td>D07</td> <td>ISO 4401-07-06 NFPA T3.5.1-D07 See Tech Information</td> </tr> <tr> <td>D08</td> <td>ISO 4401-08-07 NFPA T3.5.1-D08 See Tech Information</td> </tr> </tbody> </table>	Valve Pattern		D07	ISO 4401-07-06 NFPA T3.5.1-D07 See Tech Information	D08	ISO 4401-08-07 NFPA T3.5.1-D08 See Tech Information	<table border="1"> <thead> <tr> <th colspan="2">Manifold Pattern</th> </tr> </thead> <tbody> <tr> <td>D10</td> <td>ISO 4401-10-08 NFPA T3.5.1-D10 See Tech Information</td> </tr> </tbody> </table>	Manifold Pattern		D10	ISO 4401-10-08 NFPA T3.5.1-D10 See Tech Information	<table border="1"> <thead> <tr> <th colspan="2">Product Type</th> </tr> </thead> <tbody> <tr> <td>VA</td> <td>Valve Adaptor</td> </tr> </tbody> </table>	Product Type		VA	Valve Adaptor	<table border="1"> <thead> <tr> <th colspan="2">Port Orientation</th> </tr> </thead> <tbody> <tr> <td>AB</td> <td>A_V common to A_M B_V common to B_M</td> </tr> </tbody> </table>	Port Orientation		AB	A _V common to A _M B _V common to B _M	<table border="1"> <thead> <tr> <th colspan="2">Bolt Threads</th> </tr> </thead> <tbody> <tr> <td colspan="2">Omit for inch (UNC) bolt kit.</td> </tr> <tr> <td>M</td> <td>Metric (ISO 6H) bolt kit</td> </tr> </tbody> </table>	Bolt Threads		Omit for inch (UNC) bolt kit.		M	Metric (ISO 6H) bolt kit
Material																																					
A	Aluminum - 6061-T6 3000† psi • 20.7 MPa																																				
D	Ductile Iron - D4512 5000† psi • 34.5 MPa																																				
† Working pressure should be considered in accordance with ISO 4413 to determine appropriate material type.																																					
Valve Pattern																																					
D07	ISO 4401-07-06 NFPA T3.5.1-D07 See Tech Information																																				
D08	ISO 4401-08-07 NFPA T3.5.1-D08 See Tech Information																																				
Manifold Pattern																																					
D10	ISO 4401-10-08 NFPA T3.5.1-D10 See Tech Information																																				
Product Type																																					
VA	Valve Adaptor																																				
Port Orientation																																					
AB	A _V common to A _M B _V common to B _M																																				
Bolt Threads																																					
Omit for inch (UNC) bolt kit.																																					
M	Metric (ISO 6H) bolt kit																																				

D03 / D05 Valve Adaptors for S04 Subplates

Adapt D03 valve to S04 manifold • BA oriented

Valve mtg: UNC #10-24 x 0.63 DP or
Metric M5 x 0.8mm ISO 6H x [15.9] DP

Adaptor mounting hardware is supplied.
See page 99 for itemized list.

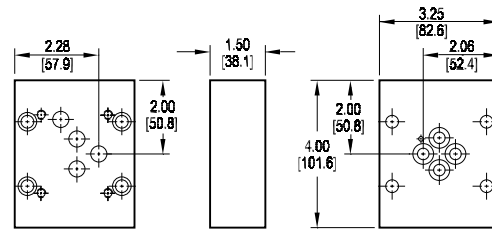
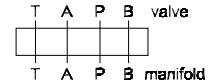


This adaptor does not orient the A & B ports on the manifold to the respective valve solenoids.

Adapt D05 valve to S04 manifold • AB oriented

Valve mtg: UNC 0.25-20 x 0.63 DP or
Metric M6 x 1.0mm ISO 6H x [15.9] DP

Adaptor mounting hardware is supplied.
See page 99 for itemized list.



This adaptor properly orients the A & B ports on the manifold to the respective valve solenoids.

Specifications, descriptions, and dimensional data are subject to correction or change without notice or incurring obligation. Download latest catalog page revisions at www.daman.com.

Ordering Information

Material	Valve Pattern	Manifold Pattern	Product Type	Port Orientation	Bolt Threads
----------	---------------	------------------	--------------	------------------	--------------

Material	
A	Aluminum - 6061-T6 3000 [†] psi • 20.7 MPa
D	Ductile Iron - D4512 5000 [†] psi • 34.5 MPa

[†] Working pressure should be considered in accordance with ISO 4413 to determine appropriate material type.

Manifold Pattern	
S04	ISO 10372-04-04 Daman std. S04 See Tech Information

Port Orientation	
BA	B _v common to A _m A _v common to B _m D03 valve pattern only
AB	A _v common to A _m B _v common to B _m D05 valve pattern only

Valve Pattern	
D03	ISO 4401-03-02 NFPA T3.5.1-D03 See Tech Information
D05	ISO 4401-05-04 NFPA T3.5.1-D05 See Tech Information

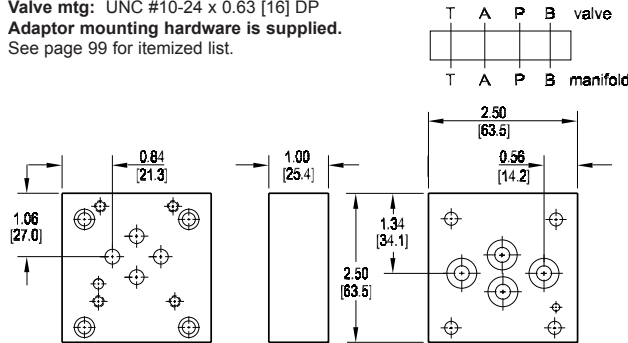
Product Type	
VA	Valve Adaptor

Bolt Threads	
Omit for inch (UNC) bolt kit.	
M	Metric (ISO 6H) bolt kit

D03 to “Obsolete Valve” Adaptors

Adapt D03 valve to Racine 01Q manifold

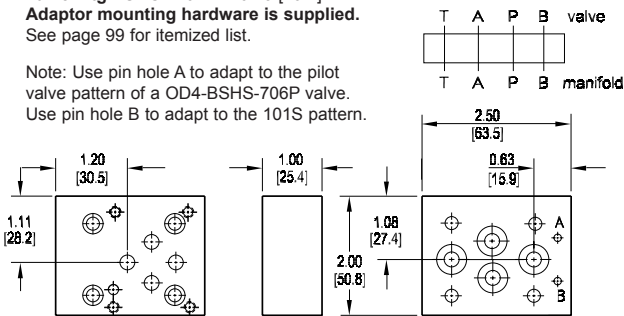
Valve mtg: UNC #10-24 x 0.63 [16] DP
 Adaptor mounting hardware is supplied.
 See page 99 for itemized list.



Adapt D03 valve to Racine 01S manifold

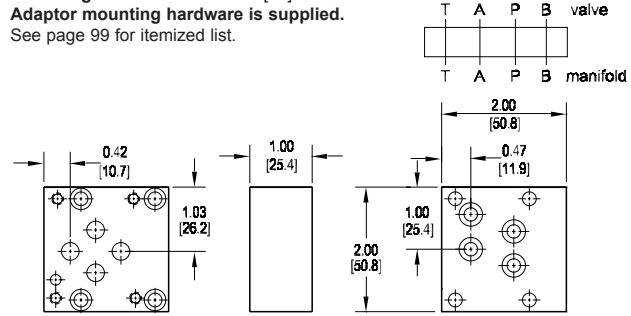
Valve mtg: UNC #10-24 x 0.75 [19.1] DP
 Adaptor mounting hardware is supplied.
 See page 99 for itemized list.

Note: Use pin hole A to adapt to the pilot valve pattern of a OD4-BSHS-706P valve.
 Use pin hole B to adapt to the 101S pattern.



Adapt D03 valve to Parker D1B manifold

Valve mtg: UNC #10-24 x 0.63 [16] DP
 Adaptor mounting hardware is supplied.
 See page 99 for itemized list.



Specifications, descriptions, and dimensional data are subject to correction or change without notice or incurring obligation.
 Download latest catalog page revisions at www.daman.com.

Ordering Information

Material	Valve Pattern	Manifold Pattern	Product Type	Port Orientation
----------	---------------	------------------	--------------	------------------

Material	
A	Aluminum - 6061-T6 3000† psi • 20.7 MPa
D	Ductile Iron - D4512 5000† psi • 34.5 MPa
† Working pressure should be considered in accordance with ISO 4413 to determine appropriate material type.	

Manifold Pattern	
See Tech Information	
01Q	Racine FD4-D*HS-*01Q-*
01S	Racine OD4-D*HS-101S
D1B	Parker D1BW-****

Port Orientation	
AB	A _V common to A _M B _V common to B _M

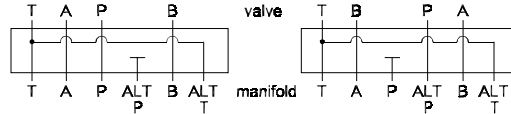
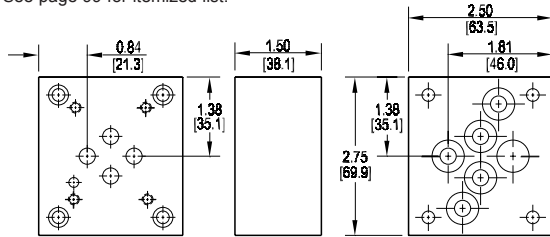
Valve Pattern	
D03	ISO 4401-03-02 NFPA T3.5.1-D03 See Tech Information

Product Type	
VA	Valve Adaptor

D03 to "Obsolete Valve" Adaptors

Adapt D03 valve to Denison D1D04 manifold

Valve mtg: UNC #10-24 x 0.50 [12.7] DP
 Adaptor mounting hardware is supplied.
 See page 99 for itemized list.

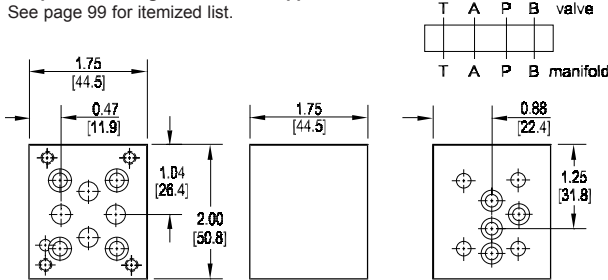


Schematic of typical installation. Replaces D1D04 valves that utilized the standard P port.

Schematic of optional installation. Replaces D1D04 pilot valves that utilized the alternate P port. The adaptor is rotated 180° in this case, which swaps A & B orientation.

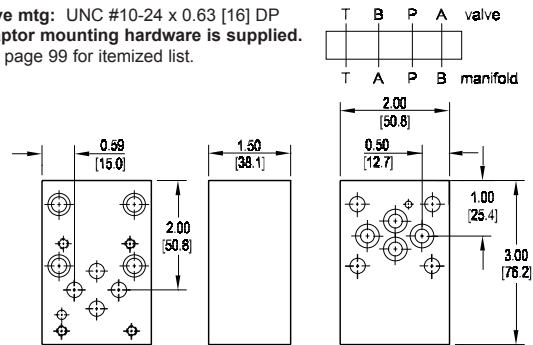
Adapt D03 valve to Vickers D1L manifold

Valve mtg: UNC #10-24 x 0.63 [16] DP
 Adaptor mounting hardware is supplied.
 See page 99 for itemized list.



Adapt D03 valve to Vickers DG4M4 manifold

Valve mtg: UNC #10-24 x 0.63 [16] DP
 Adaptor mounting hardware is supplied.
 See page 99 for itemized list.



Specifications, descriptions, and dimensional data are subject to correction or change without notice or incurring obligation. Download latest catalog page revisions at www.daman.com.

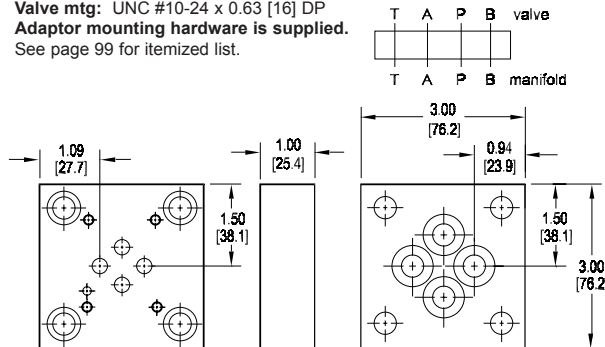
Ordering Information

Material	Valve Pattern	Manifold Pattern	Product Type	Port Orientation																																
<table border="1"> <thead> <tr> <th colspan="2">Material</th> </tr> </thead> <tbody> <tr> <td>A</td> <td>Aluminum - 6061-T6 3000† psi • 20.7 MPa</td> </tr> <tr> <td>D</td> <td>Ductile Iron - D4512 5000† psi • 34.5 MPa</td> </tr> <tr> <td colspan="2">† Working pressure should be considered in accordance with ISO 4413 to determine appropriate material type.</td> </tr> </tbody> </table>	Material		A	Aluminum - 6061-T6 3000† psi • 20.7 MPa	D	Ductile Iron - D4512 5000† psi • 34.5 MPa	† Working pressure should be considered in accordance with ISO 4413 to determine appropriate material type.		<table border="1"> <thead> <tr> <th colspan="2">Valve Pattern</th> </tr> </thead> <tbody> <tr> <td>D03</td> <td>ISO 4401-03-02 NFPA T3.5.1-D03 See Tech Information</td> </tr> </tbody> </table>	Valve Pattern		D03	ISO 4401-03-02 NFPA T3.5.1-D03 See Tech Information	<table border="1"> <thead> <tr> <th colspan="2">Manifold Pattern</th> </tr> <tr> <td colspan="2">See Tech Information</td> </tr> </thead> <tbody> <tr> <td>D1D04</td> <td>Denison D1D04-3*...</td> </tr> <tr> <td>D1L</td> <td>Vickers D1L...</td> </tr> <tr> <td>DG4M4</td> <td>Vickers DG4M4... Tokimec DG4M4...</td> </tr> </tbody> </table>	Manifold Pattern		See Tech Information		D1D04	Denison D1D04-3*...	D1L	Vickers D1L...	DG4M4	Vickers DG4M4... Tokimec DG4M4...	<table border="1"> <thead> <tr> <th colspan="2">Product Type</th> </tr> </thead> <tbody> <tr> <td>VA</td> <td>Valve Adaptor</td> </tr> </tbody> </table>	Product Type		VA	Valve Adaptor	<table border="1"> <thead> <tr> <th colspan="2">Port Orientation</th> </tr> </thead> <tbody> <tr> <td>AB</td> <td>A_v common to A_m B_v common to B_m (D1D04 and D1L)</td> </tr> <tr> <td>BA</td> <td>B_v common to A_m A_v common to B_m (DG4M4 only)</td> </tr> </tbody> </table>	Port Orientation		AB	A _v common to A _m B _v common to B _m (D1D04 and D1L)	BA	B _v common to A _m A _v common to B _m (DG4M4 only)
Material																																				
A	Aluminum - 6061-T6 3000† psi • 20.7 MPa																																			
D	Ductile Iron - D4512 5000† psi • 34.5 MPa																																			
† Working pressure should be considered in accordance with ISO 4413 to determine appropriate material type.																																				
Valve Pattern																																				
D03	ISO 4401-03-02 NFPA T3.5.1-D03 See Tech Information																																			
Manifold Pattern																																				
See Tech Information																																				
D1D04	Denison D1D04-3*...																																			
D1L	Vickers D1L...																																			
DG4M4	Vickers DG4M4... Tokimec DG4M4...																																			
Product Type																																				
VA	Valve Adaptor																																			
Port Orientation																																				
AB	A _v common to A _m B _v common to B _m (D1D04 and D1L)																																			
BA	B _v common to A _m A _v common to B _m (DG4M4 only)																																			

D03 to “Obsolete Valve” Adaptors

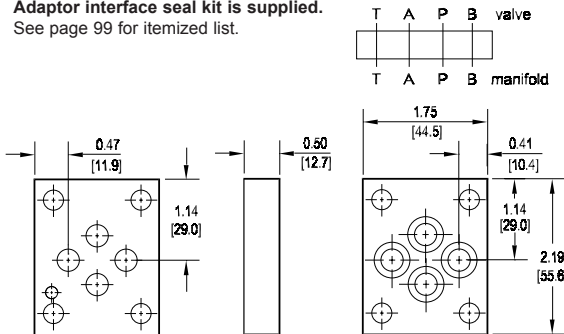
Adapt D03 valve to Republic R8143 manifold

Valve mtg: UNC #10-24 x 0.63 [16] DP
 Adaptor mounting hardware is supplied.
 See page 99 for itemized list.



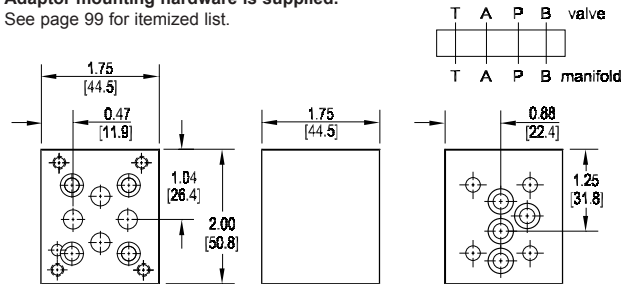
Adapt D03 valve to Rivett RVT65 manifold

Adaptor interface seal kit is supplied.
 See page 99 for itemized list.



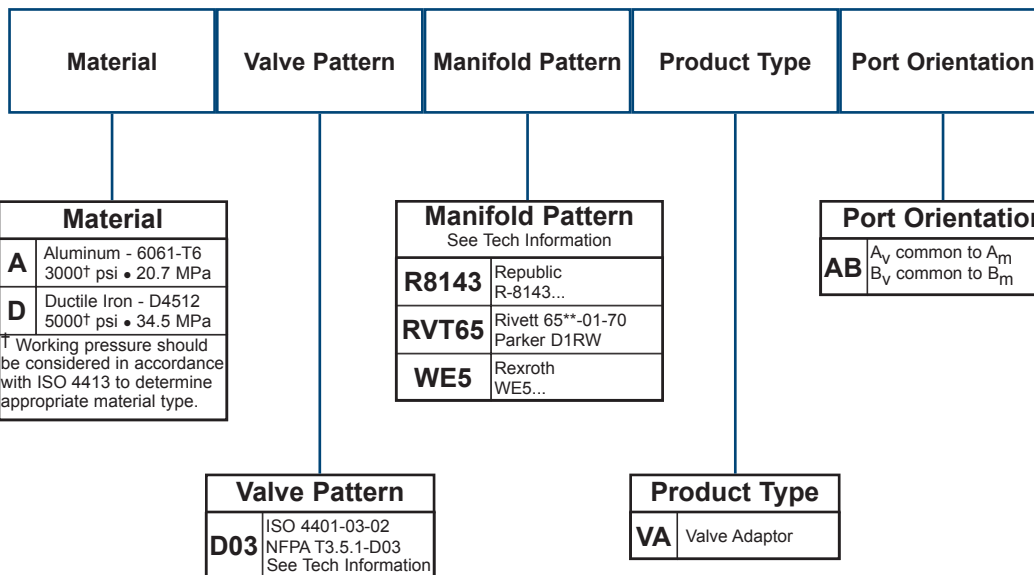
Adapt D03 valve to Rexroth WE5 manifold

Valve mtg: UNC #10-24 x 0.63 [16] DP
 Adaptor mounting hardware is supplied.
 See page 99 for itemized list.



Specifications, descriptions, and dimensional data are subject to correction or change without notice or incurring obligation. Download latest catalog page revisions at www.daman.com.

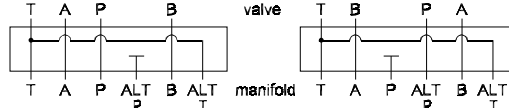
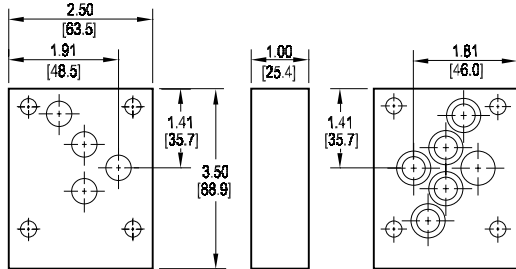
Ordering Information



D05 to "Obsolete Valve" Adaptors

Adapt D05 valve to Denison D1D04 manifold

Adaptor interface seal kit is supplied.
See page 99 for itemized list.

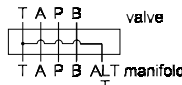
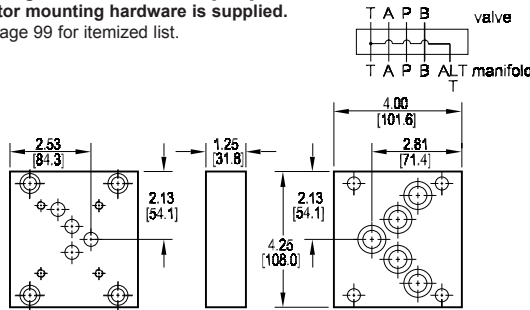


Schematic of typical installation. Replaces D1D04 valves that utilized the standard P port.

Schematic of optional installation. Replaces D1D04 pilot valves that utilized the alternate P port. The adaptor is rotated 180° in this case, which swaps A & B orientation.

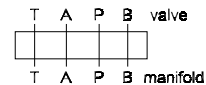
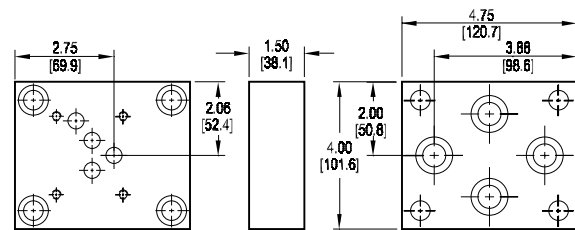
Adapt D05 valve to Vickers DG4S4-02 manifold

Valve mtg: UNC 0.25-20 x 0.56 [14.2] DP
Adaptor mounting hardware is supplied.
See page 99 for itemized list.



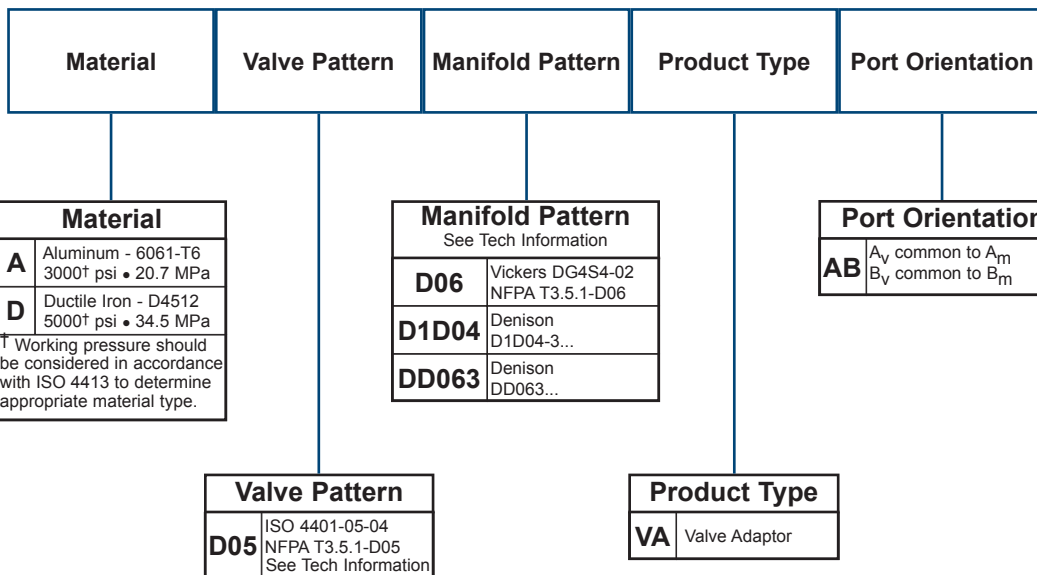
Adapt D05 valve to Denison DD063 manifold

Valve mtg: UNC 0.25-20 x 0.75 [19.1] DP
Adaptor mounting hardware is supplied.
See page 99 for itemized list.



Specifications, descriptions, and dimensional data are subject to correction or change without notice or incurring obligation. Download latest catalog page revisions at www.daman.com.

Ordering Information



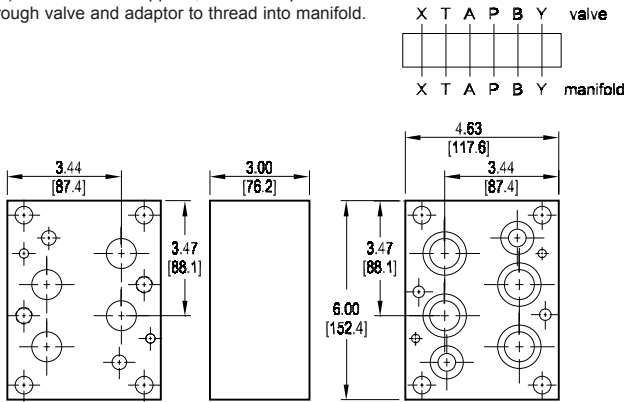
D08 to “Obsolete Valve” Adaptors

Adapt D08 valve to Denison D1D12 manifold

Valve mtg: (2) UNC 0.50-13 x 0.75 [19.1] DP
 Adaptor mounting hardware is supplied.*

See page 99 for itemized list.

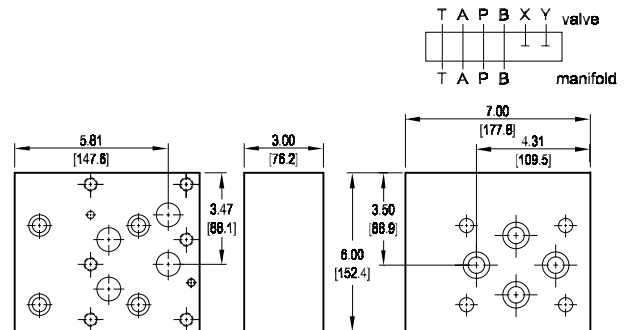
* (4) bolts are user supplied; bolts must pass through valve and adaptor to thread into manifold.



Adapt D08 valve to Denison D2D06 manifold

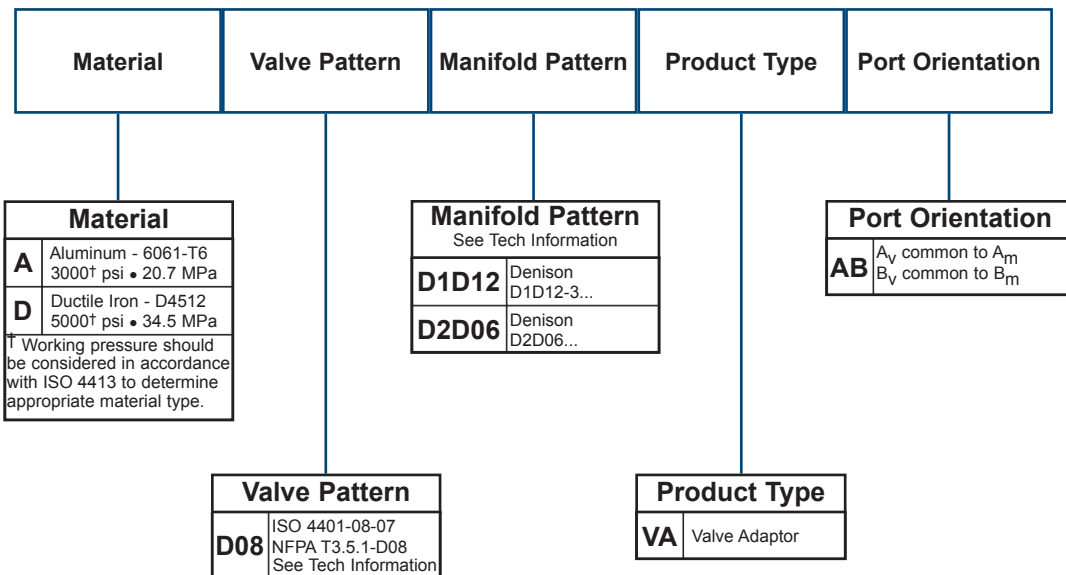
Valve mtg: UNC 0.50-13 x 1.19 [30.2] DP
 Adaptor mounting hardware is supplied.

See page 99 for itemized list.



Specifications, descriptions, and dimensional data are subject to correction or change without notice or incurring obligation. Download latest catalog page revisions at www.daman.com.

Ordering Information



D10 to “Obsolete Valve” Adaptors

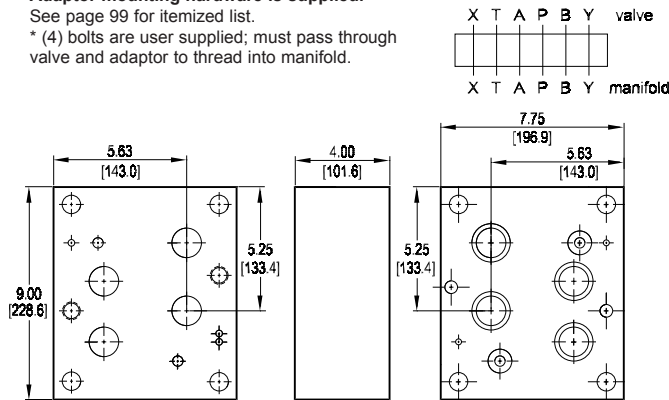
Adapt D10 valve to Denison D1D24 manifold

Valve mtg: (2) UNC 0.75-10 x 1.12 [28.4] DP

Adaptor mounting hardware is supplied.*

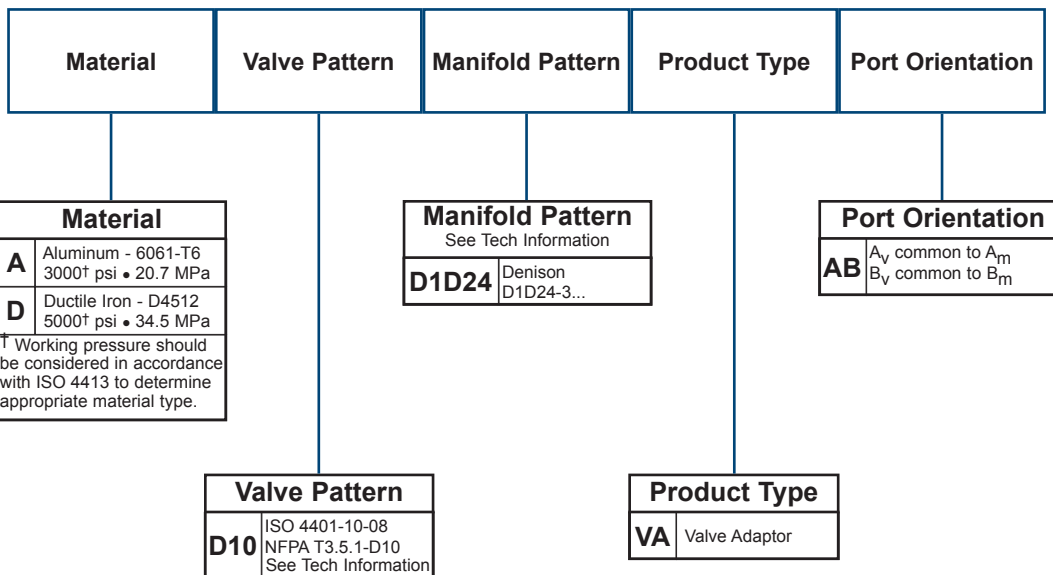
See page 99 for itemized list.

* (4) bolts are user supplied; must pass through valve and adaptor to thread into manifold.



Specifications, descriptions, and dimensional data are subject to correction or change without notice or incurring obligation. Download latest catalog page revisions at www.daman.com.

Ordering Information



Valve Adaptor Mounting Hardware

Part no.	Cat. pg.	Viton O-rings 75 durometer	Mounting Screws	Locating Pins	Plugs
* D02 D03 VA AB	79	(4) -012	(4) UNC #10-24 x 0.88 long SHCS	(1) 0.12 dia x 0.25 long	n/a
* D05 D03 VA AB A	79	(4) -012	(4) UNC #10-24 x 1.50 long SHCS		
* D05 D03 VA AB B	79	(4) -012	(4) UNC #10-24 x 0.75 long SHCS		
* S04 D03 VA BA	79	(4) -012	(4) UNC #10-24 x 1.00 long SHCS		
* D03 D03 VA BA	80	(4) -012	n/a		
* D03 D03 VA AB 090	80.1	(4) -012	(4) UNC #10-24 x 1.50 long SHCS	(1) 0.12 dia x 0.25 long	n/a
* D03 D03 VA AB 180	80.1	(4) -012	(4) UNC #10-24 x 2.00 long SHCS		
* D03 D03 VA AB 270	80.1	(4) -012	(4) UNC #10-24 x 1.50 long SHCS		
* D02 D03 VA AB M	79	(4) -012	(4) ISO 6H M5-0.8 x 20mm SHCS	(1) 0.12 dia x 0.25 long	n/a
* D05 D03 VA AB A M	79	(4) -012	(4) ISO 6H M5-0.8 x 40mm SHCS		
* D05 D03 VA AB B M	79	(4) -012	(4) ISO 6H M5-0.8 x 20mm SHCS		
* S04 D03 VA BA M	79	(4) -012	(4) ISO 6H M5-0.8 x 25mm SHCS		
* D03 D03 VA BA M	80	(4) -012	n/a		
* D03 D05 VA AB	81	(5) -014	(4) UNC 0.25-20 x 1.25 long SHCS	n/a	n/a
* D03 D05 VA BA	81	(5) -014	(4) UNC 0.25-20 x 0.75 long SHCS		
* S04 D05 VA AB	81	(5) -014	(4) UNC 0.25-20 x 1.50 long SHCS		
* D03 D05 VA AB M	81	(5) -014	(4) ISO 6H M6-1.0 x 35mm SHCS	n/a	n/a
* D03 D05 VA BA M	81	(5) -014	(4) ISO 6H M6-1.0 x 20mm SHCS		
* S04 D05 VA AB M	81	(5) -014	(4) ISO 6H M6-1.0 x 40mm SHCS		
* D03 D05H VA AB	82	(1) -011, (6) -014, (1) -016	(4) UNC 0.25-20 x 1.50 long SHCS	n/a	n/a
* D05HE D05H VA AB	82	(2) -011, (5) -014	n/a		
* D05H D05HE VA AB	82	(7) -014	n/a		
* D03 D05H VA AB M	82	(1) -011, (6) -014, (1) -016	(4) ISO 6H M6-1.0 x 35mm SHCS	n/a	n/a
* D05HE D05H VA AB M	82	(2) -011, (5) -014	n/a		
* D05H D05HE VA AB M	82	(7) -014	n/a		
* I06 D05H RVA	83	(1) -011, (6) -014, (1) -016	(4) UNC 0.25-20 x 1.50 long SHCS	n/a	(1) 0.25 NPTF LSPP
* P06 D05H RVA	83	(1) -011, (6) -014, (1) -016	(4) UNC 0.25-20 x 1.50 long SHCS		
* I06 D05H RVA M	83	(1) -011, (6) -014, (1) -016	(4) ISO 6H M6-1.0 x 40mm SHCS	n/a	n/a
* P06 D05H RVA M	83	(1) -011, (6) -014, (1) -016	(4) ISO 6H M6-1.0 x 40mm SHCS		
* D03 D06 VA AB	84	(5) -018	(4) UNC 0.38-16 x 1.25 long SHCS	n/a	n/a
* D05 D06 VA AB	84	(5) -018	(4) UNC 0.38-16 x 1.25 long SHCS		
* D05H D06H VA AB	84	(7) -018	(4) UNC 0.38-16 x 2.00 long SHCS		
* D03 D07 VA AB	85	(2) -011, (4) -210	(2) UNC 0.25-20 x 1.25 long and (4) UNC 0.38-16 x 1.25 long SHCS	(2) 0.12 dia x 0.25 long	n/a
* D05 D07 VA AB	85	(2) -011, (4) -210	(4) UNC 0.38-16 x 1.25 long SHCS		
* D05H D07 VA AB	85	(2) -011, (4) -210	(4) UNC 0.38-16 x 1.25 long SHCS		
* D05HE D07 VA AB	85	(3) -011, (1) -014, (4) -210	(2) UNC 0.25-20 x 1.50 long and (4) UNC 0.38-16 x 1.50 long SHCS		
* D08 D07 VA AB	86	(2) -011, (4) -210	(2) UNC 0.25-20 x 3.00 long and (4) UNC 0.38-16 x 3.00 long SHCS		
* D03 D07 VA AB M	85	(2) -011, (4) -210	(2) ISO 6H M6-1.0 x 35mm and (4) ISO 6H M10-1.5 x 35mm SHCS	(2) 0.12 dia x 0.25 long	n/a
* D05 D07 VA AB M	85	(2) -011, (4) -210	(4) ISO 6H M10-1.5 x 35mm SHCS		
* D05H D07 VA AB M	85	(2) -011, (4) -210	(4) ISO 6H M10-1.5 x 35mm SHCS		
* D05HE D07 VA AB M	85	(3) -011, (1) -014, (4) -210	(2) ISO 6H M6-1.0 x 40mm and (4) ISO 6H M10-1.5 x 40mm SHCS		
* D08 D07 VA AB M	86	(2) -011, (4) -210	(2) ISO 6H M6-1.0 x 75mm and (4) ISO 6H M10-1.5 x 75mm SHCS		

Valve Adaptor Mounting Hardware

Part no.	Cat. pg.	Viton O-rings 75 durometer	Mounting Screws	Locating Pins	Plugs
* D03 D08 VA AB	87	(2) -210, (4) -215	(6) UNC 0.50-13 x 1.50 long SHCS	(2) 0.25 dia x 0.50 long	n/a
* D05 D08 VA AB	87	(2) -210, (4) -215	(6) UNC 0.50-13 x 1.50 long SHCS		
* D05H D08 VA AB	87	(2) -210, (4) -215	(4) UNC 0.50-13 x 2.00 long SHCS		
* D05HE D08 VA AB	87	(2) -210, (4) -215	(6) UNC 0.50-13 x 1.50 long SHCS		
* D06 D08 VA AB	88	(2) -210, (4) -215	(4) UNC 0.50-13 x 2.00 long SHCS		
* D07 D08 VA AB	88	(2) -210, (4) -215	(4) UNC 0.50-13 x 1.50 long SHCS		
* D03 D08 VA AB M	87	(2) -210, (4) -215	(6) ISO 6H M12-1.75 x 40mm SHCS		
* D05 D08 VA AB M	87	(2) -210, (4) -215	(6) ISO 6H M12-1.75 x 40mm SHCS		
* D05H D08 VA AB M	87	(2) -210, (4) -215	(4) ISO 6H M12-1.75 x 50mm SHCS		
* D05HE D08 VA AB M	87	(2) -210, (4) -215	(6) ISO 6H M12-1.75 x 40mm SHCS		
* D06 D08 VA AB M	88	(2) -210, (4) -215	(4) ISO 6H M12-1.75 x 50mm SHCS		
* D07 D08 VA AB M	88	(2) -210, (4) -215	(4) ISO 6H M12-1.75 x 40mm SHCS		
* I08 D08 RVA	89	(2) -210, (4) -215	(6) UNC 0.50-13 x 2.00 long SHCS	(2) 0.25 dia x 0.50 long	(1) 0.25 NPTF LSPP
* P08 D08 RVA	89	(2) -210, (4) -215	(6) UNC 0.50-13 x 2.00 long SHCS	(2) 0.25 dia x 0.50 long	n/a
* R08 D08 RVA	89	(2) -210, (4) -215	(6) UNC 0.50-13 x 2.00 long SHCS	(2) 0.25 dia x 0.50 long	(1) 0.25 NPTF LSPP
* I08 D08 RVA M	89	(2) -210, (4) -215	(6) ISO 6H M12-1.75 x 50mm SHCS	(2) 0.25 dia x 0.50 long	n/a
* P08 D08 RVA M	89	(2) -210, (4) -215	(6) ISO 6H M12-1.75 x 50mm SHCS	(2) 0.25 dia x 0.50 long	
* R08 D08 RVA M	89	(2) -210, (4) -215	(6) ISO 6H M12-1.75 x 50mm SHCS	(2) 0.25 dia x 0.50 long	
* D07 D10 VA AB	90	(2) -210, (4) -222	(6) UNC 0.75-10 x 3.00 SHCS	(2) 0.25 dia x 0.50 long	n/a
* D08 D10 VA AB	90	(2) -210, (4) -222	(6) UNC 0.75-10 x 3.00 SHCS	(2) 0.25 dia x 0.50 long	
* D07 D10 VA AB M	90	(2) -210, (4) -222	(6) ISO 6H M20-2.5 x 80mm SHCS	(2) 0.25 dia x 0.50 long	n/a
* D08 D10 VA AB M	90	(2) -210, (4) -222	(6) ISO 6H M20-2.5 x 80mm SHCS	(2) 0.25 dia x 0.50 long	
* D03 S04 VA BA	91	(4) -013	(4) UNC 0.31-18 x 1.00 long SHCS	(2) 0.09 dia x 0.25 long	n/a
* D05 S04 VA AB	91	(4) -013	(4) UNC 0.31-18 x 1.50 long SHCS	(2) 0.09 dia x 0.25 long	
* D03 S04 VA BA M	91	(4) -013	(4) ISO 6H M8-1.25 x 25mm SHCS	(2) 0.09 dia x 0.25 long	n/a
* D05 S04 VA AB M	91	(4) -013	(4) ISO 6H M8-1.25 x 40mm SHCS	(2) 0.09 dia x 0.25 long	
* D03 01Q VA AB	92	(4) -012	(4) UNC #10-24 x 1.00 long SHCS	(1) 0.12 dia x 0.25 long	n/a
* D03 01S VA AB	92	(4) -012	(4) UNC 0.25-20 x 1.25 long SHCS	(1) 0.12 dia x 0.25 long	
* D03 D1B VA AB	92	(4) -010	(4) UNF #10-32 x 1.00 long SHCS	n/a	
* D03 D1D04 VA AB	93	(6) -013	(4) UNC 0.25-20 x 1.50 long SHCS	n/a	n/a
* D03 D1L VA AB	93	(4) -008	(4) UNC #10-24 x 1.75 long SHCS	n/a	
* D03 DG4M4 VA BA	93	(4) -011	(4) UNC 0.25-20 x 1.50 long SHCS	(1) 0.12 dia x 0.25 long	
* D03 R8143 VA AB	94	(4) -016	(4) UNC 0.38-16 x 1.00 long SHCS	n/a	n/a
* D03 RVT65 VA AB	94	(4) -012	n/a	n/a	
* D03 WE5 VA AB	94	(4) -010	(4) UNC #10-24 x 1.75 long SHCS	n/a	
* D05 D06 VA AB	95	(5) -018	(4) UNC 0.38-16 x 1.25 long SHCS	n/a	n/a
* D05 D1D04 VA AB	95	(6) -013	n/a	n/a	
* D05 DD063 VA AB	95	(4) -210	(4) UNC 0.50-13 x 1.50 long SHCS	n/a	
* D08 D1D12 VA AB	96	(2) -210, (4) -215	(2) UNC 0.31-18 x 1.00 long SHCS	(2) 0.25 dia x 0.50 long	n/a
* D08 D2D06 VA AB	96	(4) -210	(4) UNC 0.50-13 x 3.00 long SHCS	n/a	
* D10 D1D24 VA AB	97	(2) -210, (4) -222	(2) UNC 0.50-13 x 1.50 long SHCS	(2) 0.25 dia x 0.50 long	