

Hydraulic Valve Manifolds **Better System Design Begins with a Manifold.**

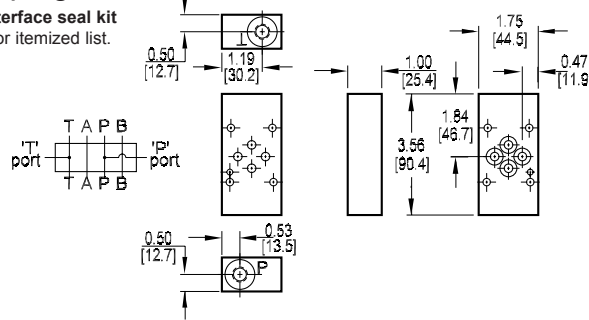
TAPPING PLATES

| | |
|-------------------------------------|---------------|
| D03 Tapping Plates | Pages 142-144 |
| D05 Tapping Plates | Pages 145-147 |
| D05 Tapping Plates with Pilot Ports | Pages 148-152 |
| D07 Tapping Plates | Pages 153-156 |
| D08 Tapping Plates | Pages 157-160 |
| D10 Tapping Plates | Page 161 |
| Flange Mount Bodies | Pages 162-163 |
| Mounting Hardware | Page 164 |

D03 Tapping Plates

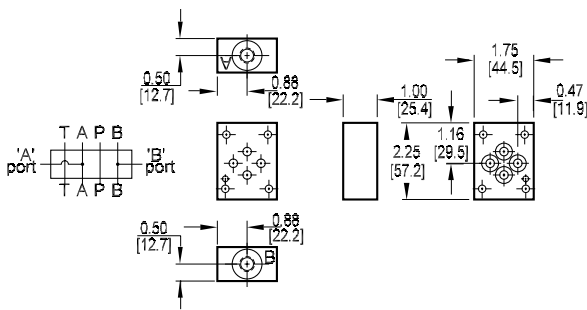
P and T Port Tapping Plate

Tapping Plate hardware / interface seal kit is supplied. See page 164 for itemized list.



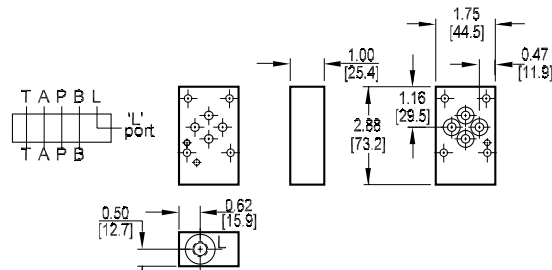
A and B Port Tapping Plate

Tapping Plate hardware / interface seal kit is supplied. See page 164 for itemized list.



L Port Tapping Plate

Tapping Plate hardware / interface seal kit is supplied. See page 164 for itemized list.



Specifications, descriptions, and dimensional data are subject to correction or change without notice or incurring obligation. Download latest catalog page revisions at www.daman.com.

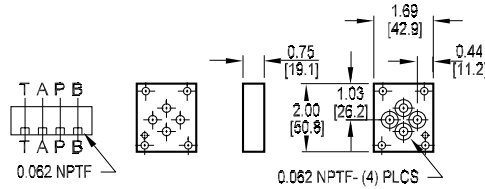
Ordering Information

| Material | Valve Pattern | Product Type | Circuit | Port Threads | | | | | | | | | | | | | | | | | | | | | | | | | | | | | | | | | | | | |
|---|---|--------------|----------|--|----------|--|--|--|---|---------------|--|------------|---|---|--------------|--|-----------|---------------|---|---------|--|-----------|------------------------|-----------|------------------------|----------|-----------------|--|--------------|--|-----------|------------------------------|-----------|-------------------------------|-----------|-----------------------------------|-----------|-----------------------|-----------|------------------------------|
| <table border="1"> <thead> <tr> <th colspan="2">Material</th> </tr> </thead> <tbody> <tr> <td>A</td> <td>Aluminum - 6061-T6 3000[†] psi • 20.7 MPa</td> </tr> <tr> <td>D</td> <td>Ductile Iron - D4512 5000[†] psi • 34.5 MPa</td> </tr> <tr> <td colspan="2">[†] Working pressure should be considered in accordance with ISO 4413 to determine appropriate material type.</td> </tr> </tbody> </table> | Material | | A | Aluminum - 6061-T6 3000 [†] psi • 20.7 MPa | D | Ductile Iron - D4512 5000 [†] psi • 34.5 MPa | [†] Working pressure should be considered in accordance with ISO 4413 to determine appropriate material type. | | <table border="1"> <thead> <tr> <th colspan="2">Valve Pattern</th> </tr> </thead> <tbody> <tr> <td>D03</td> <td>ISO 4401-03-02 NFPA T3.5.1-D03 See Tech Information</td> </tr> </tbody> </table> | Valve Pattern | | D03 | ISO 4401-03-02 NFPA T3.5.1-D03 See Tech Information | <table border="1"> <thead> <tr> <th colspan="2">Product Type</th> </tr> </thead> <tbody> <tr> <td>TP</td> <td>Tapping Plate</td> </tr> </tbody> </table> | Product Type | | TP | Tapping Plate | <table border="1"> <thead> <tr> <th colspan="2">Circuit</th> </tr> </thead> <tbody> <tr> <td>PT</td> <td>P and T ports provided</td> </tr> <tr> <td>AB</td> <td>A and B ports provided</td> </tr> <tr> <td>L</td> <td>L port provided</td> </tr> </tbody> </table> | Circuit | | PT | P and T ports provided | AB | A and B ports provided | L | L port provided | <table border="1"> <thead> <tr> <th colspan="2">Port Threads</th> </tr> </thead> <tbody> <tr> <td>4P</td> <td>0.25-18 NPTF ANSI B1.20.3</td> </tr> <tr> <td>4S</td> <td>-4 SAE ISO 11926; SAE 1926</td> </tr> <tr> <td>4B</td> <td>0.25-19 BSPP ISO 1179; BS 2779</td> </tr> <tr> <td>4M</td> <td>M10 x 1.0 ISO 6149</td> </tr> <tr> <td>4T</td> <td>0.25-19 BSPT ISO 7; BS 21</td> </tr> </tbody> </table> | Port Threads | | 4P | 0.25-18 NPTF ANSI B1.20.3 | 4S | -4 SAE ISO 11926; SAE 1926 | 4B | 0.25-19 BSPP ISO 1179; BS 2779 | 4M | M10 x 1.0 ISO 6149 | 4T | 0.25-19 BSPT ISO 7; BS 21 |
| Material | | | | | | | | | | | | | | | | | | | | | | | | | | | | | | | | | | | | | | | | |
| A | Aluminum - 6061-T6 3000 [†] psi • 20.7 MPa | | | | | | | | | | | | | | | | | | | | | | | | | | | | | | | | | | | | | | | |
| D | Ductile Iron - D4512 5000 [†] psi • 34.5 MPa | | | | | | | | | | | | | | | | | | | | | | | | | | | | | | | | | | | | | | | |
| [†] Working pressure should be considered in accordance with ISO 4413 to determine appropriate material type. | | | | | | | | | | | | | | | | | | | | | | | | | | | | | | | | | | | | | | | | |
| Valve Pattern | | | | | | | | | | | | | | | | | | | | | | | | | | | | | | | | | | | | | | | | |
| D03 | ISO 4401-03-02 NFPA T3.5.1-D03 See Tech Information | | | | | | | | | | | | | | | | | | | | | | | | | | | | | | | | | | | | | | | |
| Product Type | | | | | | | | | | | | | | | | | | | | | | | | | | | | | | | | | | | | | | | | |
| TP | Tapping Plate | | | | | | | | | | | | | | | | | | | | | | | | | | | | | | | | | | | | | | | |
| Circuit | | | | | | | | | | | | | | | | | | | | | | | | | | | | | | | | | | | | | | | | |
| PT | P and T ports provided | | | | | | | | | | | | | | | | | | | | | | | | | | | | | | | | | | | | | | | |
| AB | A and B ports provided | | | | | | | | | | | | | | | | | | | | | | | | | | | | | | | | | | | | | | | |
| L | L port provided | | | | | | | | | | | | | | | | | | | | | | | | | | | | | | | | | | | | | | | |
| Port Threads | | | | | | | | | | | | | | | | | | | | | | | | | | | | | | | | | | | | | | | | |
| 4P | 0.25-18 NPTF ANSI B1.20.3 | | | | | | | | | | | | | | | | | | | | | | | | | | | | | | | | | | | | | | | |
| 4S | -4 SAE ISO 11926; SAE 1926 | | | | | | | | | | | | | | | | | | | | | | | | | | | | | | | | | | | | | | | |
| 4B | 0.25-19 BSPP ISO 1179; BS 2779 | | | | | | | | | | | | | | | | | | | | | | | | | | | | | | | | | | | | | | | |
| 4M | M10 x 1.0 ISO 6149 | | | | | | | | | | | | | | | | | | | | | | | | | | | | | | | | | | | | | | | |
| 4T | 0.25-19 BSPT ISO 7; BS 21 | | | | | | | | | | | | | | | | | | | | | | | | | | | | | | | | | | | | | | | |

D03 Tapping Plates

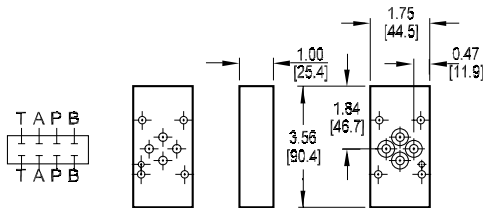
Orifice Tapping Plate

Tapping Plate hardware / interface seal kit is supplied. See page 164 for itemized list.



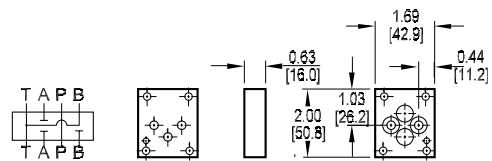
Spot Drilled Tapping Plate

Tapping Plate hardware / interface seal kit is supplied. See page 164 for itemized list.



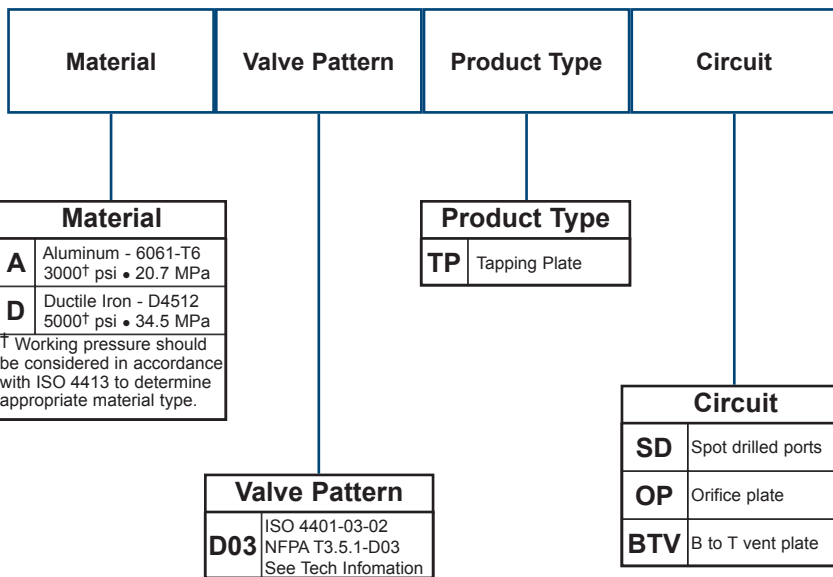
B to T vent Tapping Plate

Tapping Plate hardware / interface seal kit is supplied. See page 164 for itemized list.



Specifications, descriptions, and dimensional data are subject to correction or change without notice or incurring obligation. Download latest catalog page revisions at www.daman.com.

Ordering Information

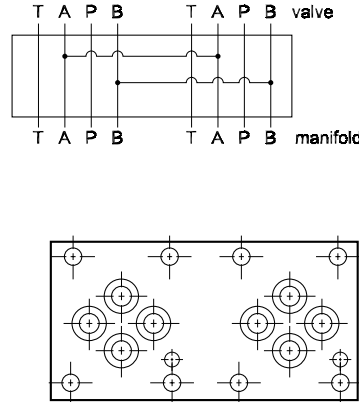
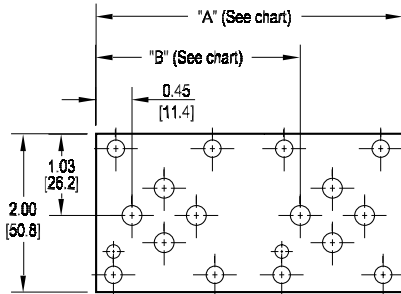


D03 Tapping Plates

D03 Two Station Tapping Plate

A₁ common to A₂, B₁ common to B₂

Tapping Plate hardware / interface seal kit is supplied. See page 164 for itemized list.

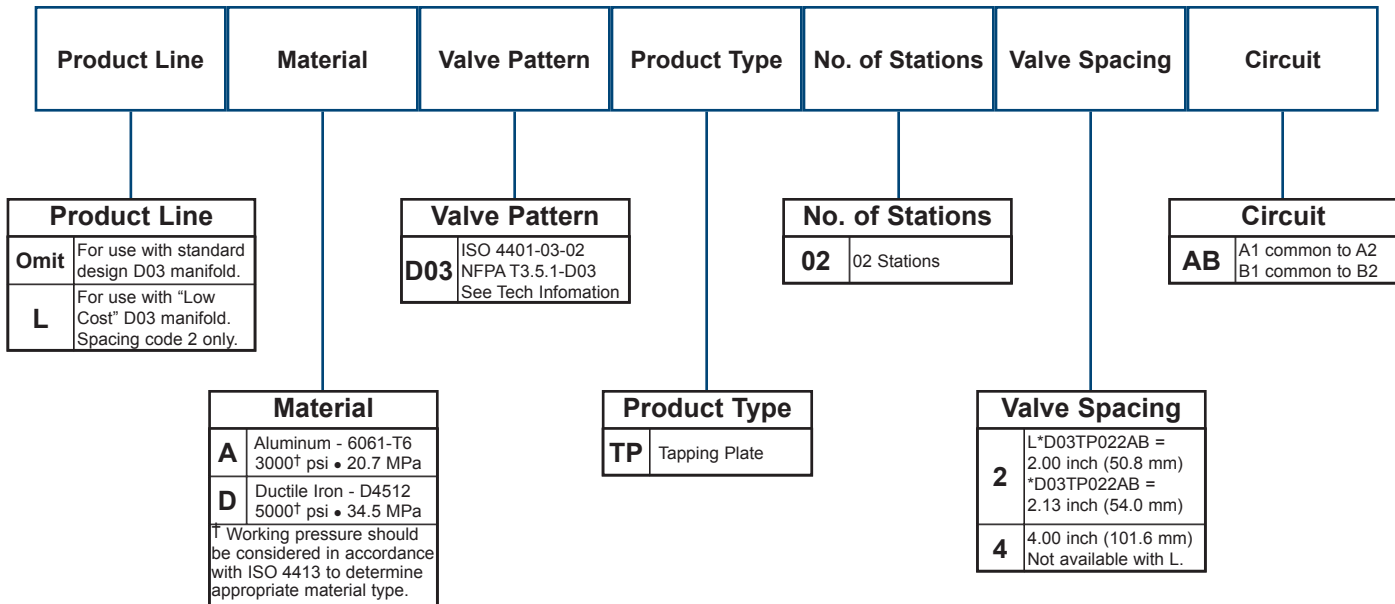


| Dimension | A | B |
|--------------|-----------------|-----------------|
| *D03TP022AB | 3.88 [98.6] | 2.58 [65.5] |
| *D03TP024AB | 5.75 [146.1] | 4.45 [113.1] |
| L*D03TP022AB | 3.75 [95.3] | 2.45 [62.3] |

There are two different tapping plate models with spacing code 2 available. This is necessary to cover the variation of valve spacing between the standard design and the LC (low cost) design of D03 manifolds. The standard manifold design has 2.125" valve spacing while the LC design has 2.000" valve spacing. An L is added to the front of the model number to denote the tapping plate designed to be used with the LC manifold. Note that a single model is required with spacing code 4 as both the standard and LC designs have 4.000 spacing.

Specifications, descriptions, and dimensional data are subject to correction or change without notice or incurring obligation. Download latest catalog page revisions at www.daman.com.

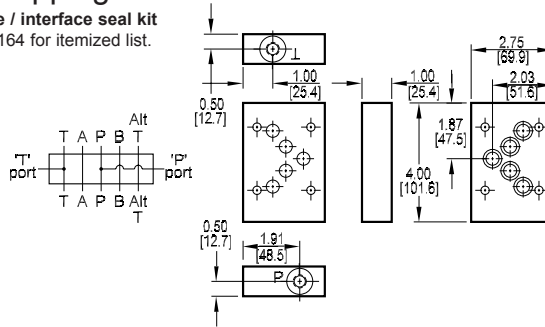
Ordering Information



D05 Tapping Plates

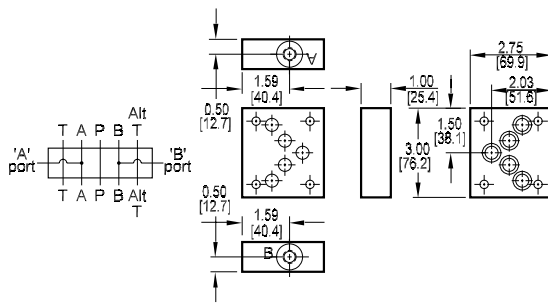
P and T Port Tapping Plate

Tapping Plate hardware / interface seal kit is supplied. See page 164 for itemized list.



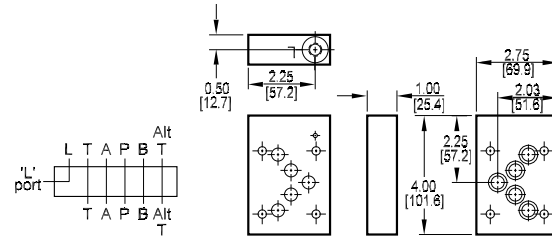
A and B Port Tapping Plate

Tapping Plate hardware / interface seal kit is supplied. See page 164 for itemized list.



L Port Tapping Plate

Tapping Plate interface seal kit is supplied. See page 164 for itemized list.



Specifications, descriptions, and dimensional data are subject to correction or change without notice or incurring obligation. Download latest catalog page revisions at www.daman.com.

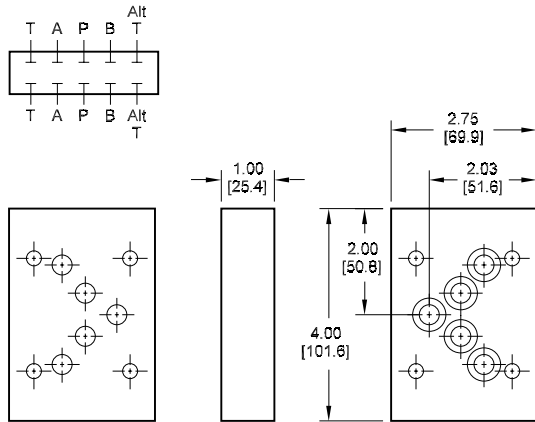
Ordering Information

| Material | Valve Pattern | Product Type | Circuit | Port Threads | | | | | | | | | | | | | | | | | | | | | | | | | | | | | | | | | | | | |
|--|--|--------------|----------|--|----------|--|---|--|--|---------------|--|------------|--|---|--------------|--|-----------|---------------|---|---------|--|-----------|------------------------|-----------|------------------------|----------|-----------------|--|--------------|--|-----------|------------------------------|-----------|-------------------------------|-----------|-----------------------------------|-----------|-----------------------|-----------|------------------------------|
| <table border="1"> <thead> <tr> <th colspan="2">Material</th> </tr> </thead> <tbody> <tr> <td>A</td> <td>Aluminum - 6061-T6 3000† psi • 20.7 MPa</td> </tr> <tr> <td>D</td> <td>Ductile Iron - D4512 5000† psi • 34.5 MPa</td> </tr> <tr> <td colspan="2">† Working pressure should be considered in accordance with ISO 4413 to determine appropriate material type.</td> </tr> </tbody> </table> | Material | | A | Aluminum - 6061-T6 3000† psi • 20.7 MPa | D | Ductile Iron - D4512 5000† psi • 34.5 MPa | † Working pressure should be considered in accordance with ISO 4413 to determine appropriate material type. | | <table border="1"> <thead> <tr> <th colspan="2">Valve Pattern</th> </tr> </thead> <tbody> <tr> <td>D05</td> <td>ISO 4401-05-04 NFFPA T3.5.1-D05 See Tech Information</td> </tr> </tbody> </table> | Valve Pattern | | D05 | ISO 4401-05-04 NFFPA T3.5.1-D05 See Tech Information | <table border="1"> <thead> <tr> <th colspan="2">Product Type</th> </tr> </thead> <tbody> <tr> <td>TP</td> <td>Tapping Plate</td> </tr> </tbody> </table> | Product Type | | TP | Tapping Plate | <table border="1"> <thead> <tr> <th colspan="2">Circuit</th> </tr> </thead> <tbody> <tr> <td>PT</td> <td>P and T ports provided</td> </tr> <tr> <td>AB</td> <td>A and B ports provided</td> </tr> <tr> <td>L</td> <td>L port provided</td> </tr> </tbody> </table> | Circuit | | PT | P and T ports provided | AB | A and B ports provided | L | L port provided | <table border="1"> <thead> <tr> <th colspan="2">Port Threads</th> </tr> </thead> <tbody> <tr> <td>4P</td> <td>0.25-18 NPTF ANSI B1.20.3</td> </tr> <tr> <td>4S</td> <td>-4 SAE ISO 11926; SAE 1926</td> </tr> <tr> <td>4B</td> <td>0.25-19 BSPP ISO 1179; BS 2779</td> </tr> <tr> <td>4M</td> <td>M10 x 1.0 ISO 6149</td> </tr> <tr> <td>4T</td> <td>0.25-19 BSPT ISO 7; BS 21</td> </tr> </tbody> </table> | Port Threads | | 4P | 0.25-18 NPTF ANSI B1.20.3 | 4S | -4 SAE ISO 11926; SAE 1926 | 4B | 0.25-19 BSPP ISO 1179; BS 2779 | 4M | M10 x 1.0 ISO 6149 | 4T | 0.25-19 BSPT ISO 7; BS 21 |
| Material | | | | | | | | | | | | | | | | | | | | | | | | | | | | | | | | | | | | | | | | |
| A | Aluminum - 6061-T6 3000† psi • 20.7 MPa | | | | | | | | | | | | | | | | | | | | | | | | | | | | | | | | | | | | | | | |
| D | Ductile Iron - D4512 5000† psi • 34.5 MPa | | | | | | | | | | | | | | | | | | | | | | | | | | | | | | | | | | | | | | | |
| † Working pressure should be considered in accordance with ISO 4413 to determine appropriate material type. | | | | | | | | | | | | | | | | | | | | | | | | | | | | | | | | | | | | | | | | |
| Valve Pattern | | | | | | | | | | | | | | | | | | | | | | | | | | | | | | | | | | | | | | | | |
| D05 | ISO 4401-05-04 NFFPA T3.5.1-D05 See Tech Information | | | | | | | | | | | | | | | | | | | | | | | | | | | | | | | | | | | | | | | |
| Product Type | | | | | | | | | | | | | | | | | | | | | | | | | | | | | | | | | | | | | | | | |
| TP | Tapping Plate | | | | | | | | | | | | | | | | | | | | | | | | | | | | | | | | | | | | | | | |
| Circuit | | | | | | | | | | | | | | | | | | | | | | | | | | | | | | | | | | | | | | | | |
| PT | P and T ports provided | | | | | | | | | | | | | | | | | | | | | | | | | | | | | | | | | | | | | | | |
| AB | A and B ports provided | | | | | | | | | | | | | | | | | | | | | | | | | | | | | | | | | | | | | | | |
| L | L port provided | | | | | | | | | | | | | | | | | | | | | | | | | | | | | | | | | | | | | | | |
| Port Threads | | | | | | | | | | | | | | | | | | | | | | | | | | | | | | | | | | | | | | | | |
| 4P | 0.25-18 NPTF ANSI B1.20.3 | | | | | | | | | | | | | | | | | | | | | | | | | | | | | | | | | | | | | | | |
| 4S | -4 SAE ISO 11926; SAE 1926 | | | | | | | | | | | | | | | | | | | | | | | | | | | | | | | | | | | | | | | |
| 4B | 0.25-19 BSPP ISO 1179; BS 2779 | | | | | | | | | | | | | | | | | | | | | | | | | | | | | | | | | | | | | | | |
| 4M | M10 x 1.0 ISO 6149 | | | | | | | | | | | | | | | | | | | | | | | | | | | | | | | | | | | | | | | |
| 4T | 0.25-19 BSPT ISO 7; BS 21 | | | | | | | | | | | | | | | | | | | | | | | | | | | | | | | | | | | | | | | |

D05 Tapping Plates

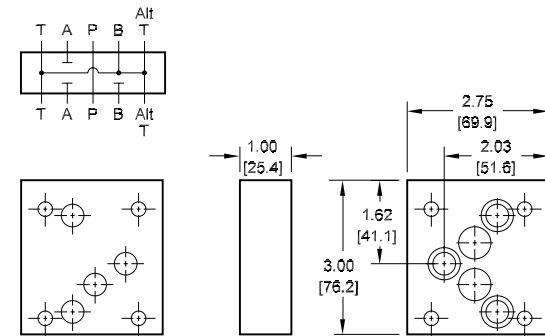
Spot Drilled Tapping Plate

Tapping Plate interface seal kit is supplied.
See page 164 for itemized list.



B to T vent Tapping Plate

Tapping Plate interface seal kit is supplied.
See page 164 for itemized list.



Specifications, descriptions, and dimensional data are subject to correction or change without notice or incurring obligation. Download latest catalog page revisions at www.daman.com.

Ordering Information

| Material | Valve Pattern | Product Type | Circuit |
|----------|---------------|--------------|---------|
|----------|---------------|--------------|---------|

| Material | |
|----------|--|
| A | Aluminum - 6061-T6 3000 [†] psi • 20.7 MPa |
| D | Ductile Iron - D4512 5000 [†] psi • 34.5 MPa |

[†] Working pressure should be considered in accordance with ISO 4413 to determine appropriate material type.

| Product Type | |
|--------------|---------------|
| TP | Tapping Plate |

| Circuit | |
|------------|--------------------|
| SD | Spot drilled ports |
| BTV | B to T vent plate |

| Valve Pattern | |
|---------------|---|
| D05 | ISO 4401-05-04 NFPA T3.5.1-D05 See Tech Information |

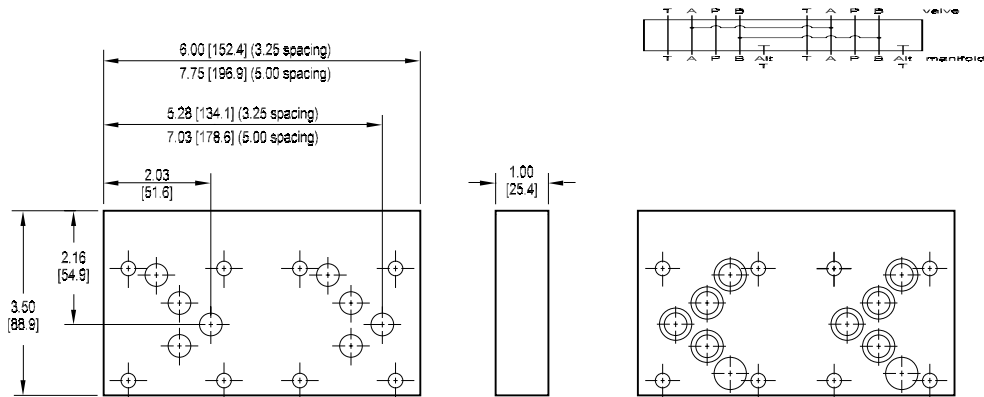
D05 Tapping Plates

D05 Two Station Tapping Plate

A₁ common to A₂, B₁ common to B₂

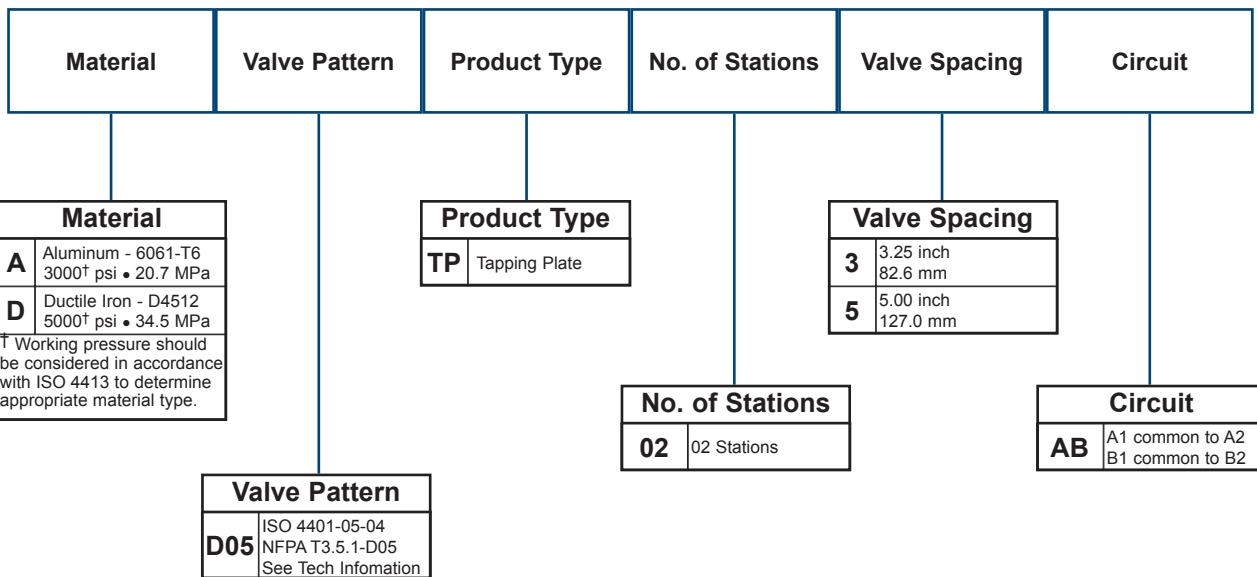
Tapping Plate interface seal kit is supplied.

See page 164 for itemized list.



Specifications, descriptions, and dimensional data are subject to correction or change without notice or incurring obligation. Download latest catalog page revisions at www.daman.com.

Ordering Information



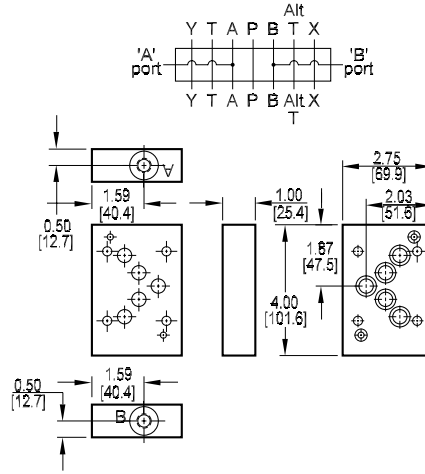
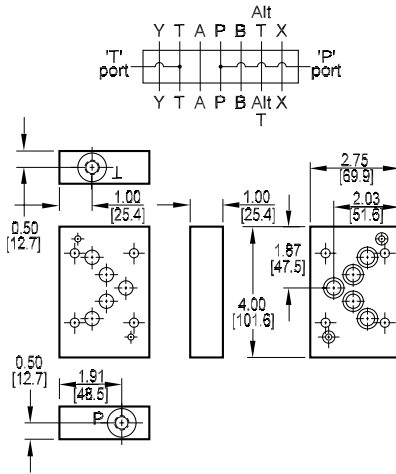
D05 Tapping Plates with USA Pilot Ports

P and T Port Tapping Plate

Tapping Plate hardware / interface seal kit is supplied. See page 164 for itemized list.

A and B Port Tapping Plate

Tapping Plate hardware / interface seal kit is supplied. See page 164 for itemized list.



Specifications, descriptions, and dimensional data are subject to correction or change without notice or incurring obligation. Download latest catalog page revisions at www.daman.com.

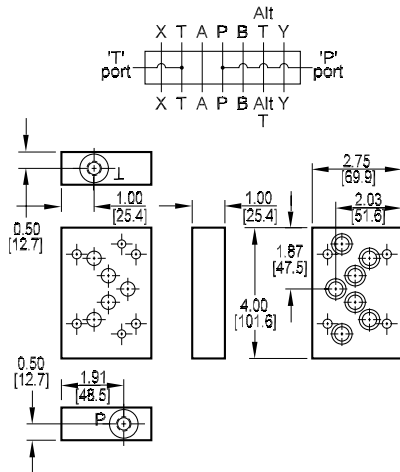
Ordering Information

| Material | Valve Pattern | Product Type | Circuit | Port Threads | | | | | | | | | | | | | | | | | | | | | | | | | | | | | | | | | | |
|---|--|--------------|----------|--|----------|--|--|--|---|---------------|--|-------------|--|---|--------------|--|-----------|---------------|---|---------|--|-----------|------------------------|-----------|------------------------|--|--------------|--|-----------|------------------------------|-----------|-------------------------------|-----------|-----------------------------------|-----------|-----------------------|-----------|------------------------------|
| <table border="1"> <thead> <tr> <th colspan="2">Material</th> </tr> </thead> <tbody> <tr> <td>A</td> <td>Aluminum - 6061-T6 3000[†] psi • 20.7 MPa</td> </tr> <tr> <td>D</td> <td>Ductile Iron - D4512 5000[†] psi • 34.5 MPa</td> </tr> <tr> <td colspan="2">[†] Working pressure should be considered in accordance with ISO 4413 to determine appropriate material type.</td> </tr> </tbody> </table> | Material | | A | Aluminum - 6061-T6 3000 [†] psi • 20.7 MPa | D | Ductile Iron - D4512 5000 [†] psi • 34.5 MPa | [†] Working pressure should be considered in accordance with ISO 4413 to determine appropriate material type. | | <table border="1"> <thead> <tr> <th colspan="2">Valve Pattern</th> </tr> </thead> <tbody> <tr> <td>D05H</td> <td>(USA std) NFPA T3.5.1-D05 Alt B See Tech Information</td> </tr> </tbody> </table> | Valve Pattern | | D05H | (USA std) NFPA T3.5.1-D05 Alt B See Tech Information | <table border="1"> <thead> <tr> <th colspan="2">Product Type</th> </tr> </thead> <tbody> <tr> <td>TP</td> <td>Tapping Plate</td> </tr> </tbody> </table> | Product Type | | TP | Tapping Plate | <table border="1"> <thead> <tr> <th colspan="2">Circuit</th> </tr> </thead> <tbody> <tr> <td>PT</td> <td>P and T ports provided</td> </tr> <tr> <td>AB</td> <td>A and B ports provided</td> </tr> </tbody> </table> | Circuit | | PT | P and T ports provided | AB | A and B ports provided | <table border="1"> <thead> <tr> <th colspan="2">Port Threads</th> </tr> </thead> <tbody> <tr> <td>4P</td> <td>0.25-18 NPTF ANSI B1.20.3</td> </tr> <tr> <td>4S</td> <td>-4 SAE ISO 11926; SAE 1926</td> </tr> <tr> <td>4B</td> <td>0.25-19 BSPP ISO 1179; BS 2779</td> </tr> <tr> <td>4M</td> <td>M10 x 1.0 ISO 6149</td> </tr> <tr> <td>4T</td> <td>0.25-19 BSPT ISO 7; BS 21</td> </tr> </tbody> </table> | Port Threads | | 4P | 0.25-18 NPTF ANSI B1.20.3 | 4S | -4 SAE ISO 11926; SAE 1926 | 4B | 0.25-19 BSPP ISO 1179; BS 2779 | 4M | M10 x 1.0 ISO 6149 | 4T | 0.25-19 BSPT ISO 7; BS 21 |
| Material | | | | | | | | | | | | | | | | | | | | | | | | | | | | | | | | | | | | | | |
| A | Aluminum - 6061-T6 3000 [†] psi • 20.7 MPa | | | | | | | | | | | | | | | | | | | | | | | | | | | | | | | | | | | | | |
| D | Ductile Iron - D4512 5000 [†] psi • 34.5 MPa | | | | | | | | | | | | | | | | | | | | | | | | | | | | | | | | | | | | | |
| [†] Working pressure should be considered in accordance with ISO 4413 to determine appropriate material type. | | | | | | | | | | | | | | | | | | | | | | | | | | | | | | | | | | | | | | |
| Valve Pattern | | | | | | | | | | | | | | | | | | | | | | | | | | | | | | | | | | | | | | |
| D05H | (USA std) NFPA T3.5.1-D05 Alt B See Tech Information | | | | | | | | | | | | | | | | | | | | | | | | | | | | | | | | | | | | | |
| Product Type | | | | | | | | | | | | | | | | | | | | | | | | | | | | | | | | | | | | | | |
| TP | Tapping Plate | | | | | | | | | | | | | | | | | | | | | | | | | | | | | | | | | | | | | |
| Circuit | | | | | | | | | | | | | | | | | | | | | | | | | | | | | | | | | | | | | | |
| PT | P and T ports provided | | | | | | | | | | | | | | | | | | | | | | | | | | | | | | | | | | | | | |
| AB | A and B ports provided | | | | | | | | | | | | | | | | | | | | | | | | | | | | | | | | | | | | | |
| Port Threads | | | | | | | | | | | | | | | | | | | | | | | | | | | | | | | | | | | | | | |
| 4P | 0.25-18 NPTF ANSI B1.20.3 | | | | | | | | | | | | | | | | | | | | | | | | | | | | | | | | | | | | | |
| 4S | -4 SAE ISO 11926; SAE 1926 | | | | | | | | | | | | | | | | | | | | | | | | | | | | | | | | | | | | | |
| 4B | 0.25-19 BSPP ISO 1179; BS 2779 | | | | | | | | | | | | | | | | | | | | | | | | | | | | | | | | | | | | | |
| 4M | M10 x 1.0 ISO 6149 | | | | | | | | | | | | | | | | | | | | | | | | | | | | | | | | | | | | | |
| 4T | 0.25-19 BSPT ISO 7; BS 21 | | | | | | | | | | | | | | | | | | | | | | | | | | | | | | | | | | | | | |

D05 Tapping Plates with ISO Pilot Ports

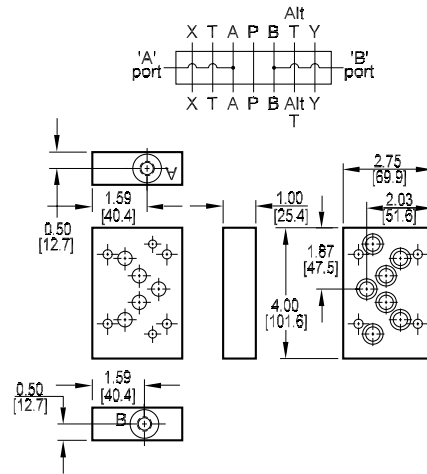
P and T Port Tapping Plate

Tapping Plate hardware / interface seal kit is supplied. See page 164 for itemized list.



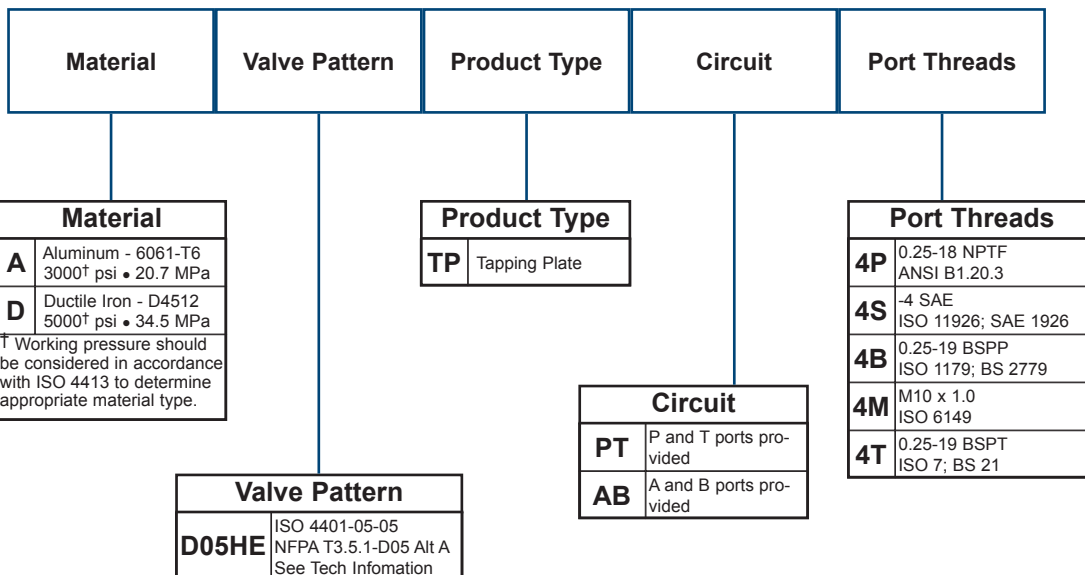
A and B Port Tapping Plate

Tapping Plate hardware / interface seal kit is supplied. See page 164 for itemized list.



Specifications, descriptions, and dimensional data are subject to correction or change without notice or incurring obligation. Download latest catalog page revisions at www.daman.com.

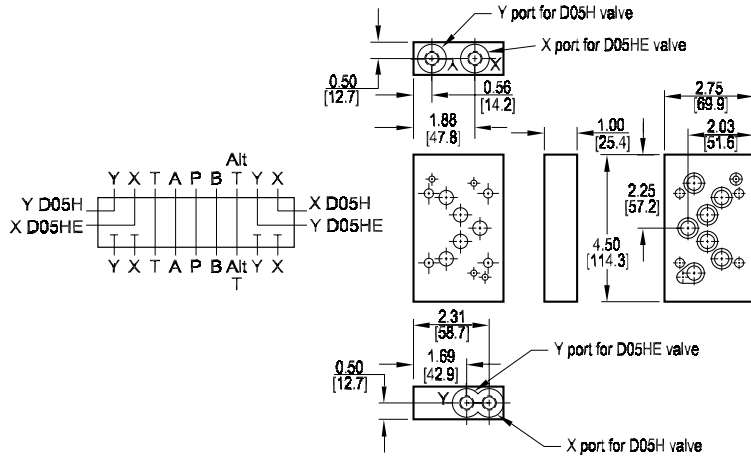
Ordering Information



D05 Tapping Plates with Pilot Ports

X and Y Port Tapping Plate

Tapping Plate hardware / interface seal kit is supplied. See page 164 for itemized list.



Specifications, descriptions, and dimensional data are subject to correction or change without notice or incurring obligation. Download latest catalog page revisions at www.daman.com.

Ordering Information

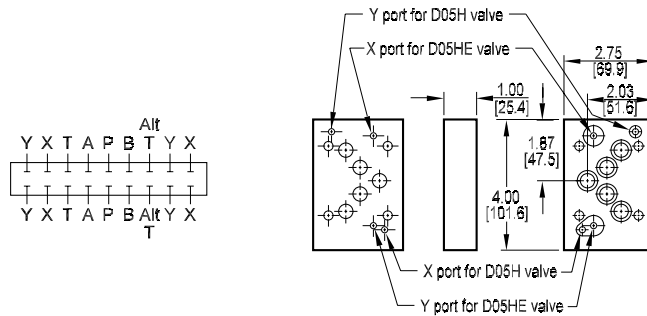
| Material | Valve Pattern | Product Type | Circuit | Port Threads | | | | | | | | | | | | | | | | | | | | | | | | | | | | | | | | |
|---|--|--------------|----------|--|----------|--|--|--|---|---------------|--|-------------|--|---|--------------|--|-----------|---------------|---|---------|--|-----------|------------------------|--|--------------|--|-----------|------------------------------|-----------|-------------------------------|-----------|-----------------------------------|-----------|-----------------------|-----------|------------------------------|
| <table border="1"> <thead> <tr> <th colspan="2">Material</th> </tr> </thead> <tbody> <tr> <td>A</td> <td>Aluminum - 6061-T6 3000[†] psi • 20.7 MPa</td> </tr> <tr> <td>D</td> <td>Ductile Iron - D4512 5000[†] psi • 34.5 MPa</td> </tr> <tr> <td colspan="2">[†] Working pressure should be considered in accordance with ISO 4413 to determine appropriate material type.</td> </tr> </tbody> </table> | Material | | A | Aluminum - 6061-T6 3000 [†] psi • 20.7 MPa | D | Ductile Iron - D4512 5000 [†] psi • 34.5 MPa | [†] Working pressure should be considered in accordance with ISO 4413 to determine appropriate material type. | | <table border="1"> <thead> <tr> <th colspan="2">Valve Pattern</th> </tr> </thead> <tbody> <tr> <td>D05H</td> <td>ISO 4401-05-05 NFPA T3.5.1-D05 Alt A & B See Technical Information</td> </tr> </tbody> </table> | Valve Pattern | | D05H | ISO 4401-05-05 NFPA T3.5.1-D05 Alt A & B See Technical Information | <table border="1"> <thead> <tr> <th colspan="2">Product Type</th> </tr> </thead> <tbody> <tr> <td>TP</td> <td>Tapping Plate</td> </tr> </tbody> </table> | Product Type | | TP | Tapping Plate | <table border="1"> <thead> <tr> <th colspan="2">Circuit</th> </tr> </thead> <tbody> <tr> <td>XY</td> <td>X and Y ports provided</td> </tr> </tbody> </table> | Circuit | | XY | X and Y ports provided | <table border="1"> <thead> <tr> <th colspan="2">Port Threads</th> </tr> </thead> <tbody> <tr> <td>4P</td> <td>0.25-18 NPTF ANSI B1.20.3</td> </tr> <tr> <td>4S</td> <td>-4 SAE ISO 11926; SAE 1926</td> </tr> <tr> <td>4B</td> <td>0.25-19 BSPP ISO 1179; BS 2779</td> </tr> <tr> <td>4M</td> <td>M10 x 1.0 ISO 6149</td> </tr> <tr> <td>4T</td> <td>0.25-19 BSPT ISO 7; BS 21</td> </tr> </tbody> </table> | Port Threads | | 4P | 0.25-18 NPTF ANSI B1.20.3 | 4S | -4 SAE ISO 11926; SAE 1926 | 4B | 0.25-19 BSPP ISO 1179; BS 2779 | 4M | M10 x 1.0 ISO 6149 | 4T | 0.25-19 BSPT ISO 7; BS 21 |
| Material | | | | | | | | | | | | | | | | | | | | | | | | | | | | | | | | | | | | |
| A | Aluminum - 6061-T6 3000 [†] psi • 20.7 MPa | | | | | | | | | | | | | | | | | | | | | | | | | | | | | | | | | | | |
| D | Ductile Iron - D4512 5000 [†] psi • 34.5 MPa | | | | | | | | | | | | | | | | | | | | | | | | | | | | | | | | | | | |
| [†] Working pressure should be considered in accordance with ISO 4413 to determine appropriate material type. | | | | | | | | | | | | | | | | | | | | | | | | | | | | | | | | | | | | |
| Valve Pattern | | | | | | | | | | | | | | | | | | | | | | | | | | | | | | | | | | | | |
| D05H | ISO 4401-05-05 NFPA T3.5.1-D05 Alt A & B See Technical Information | | | | | | | | | | | | | | | | | | | | | | | | | | | | | | | | | | | |
| Product Type | | | | | | | | | | | | | | | | | | | | | | | | | | | | | | | | | | | | |
| TP | Tapping Plate | | | | | | | | | | | | | | | | | | | | | | | | | | | | | | | | | | | |
| Circuit | | | | | | | | | | | | | | | | | | | | | | | | | | | | | | | | | | | | |
| XY | X and Y ports provided | | | | | | | | | | | | | | | | | | | | | | | | | | | | | | | | | | | |
| Port Threads | | | | | | | | | | | | | | | | | | | | | | | | | | | | | | | | | | | | |
| 4P | 0.25-18 NPTF ANSI B1.20.3 | | | | | | | | | | | | | | | | | | | | | | | | | | | | | | | | | | | |
| 4S | -4 SAE ISO 11926; SAE 1926 | | | | | | | | | | | | | | | | | | | | | | | | | | | | | | | | | | | |
| 4B | 0.25-19 BSPP ISO 1179; BS 2779 | | | | | | | | | | | | | | | | | | | | | | | | | | | | | | | | | | | |
| 4M | M10 x 1.0 ISO 6149 | | | | | | | | | | | | | | | | | | | | | | | | | | | | | | | | | | | |
| 4T | 0.25-19 BSPT ISO 7; BS 21 | | | | | | | | | | | | | | | | | | | | | | | | | | | | | | | | | | | |

D05 Tapping Plates with Pilot Ports

Spot Drilled Tapping Plate

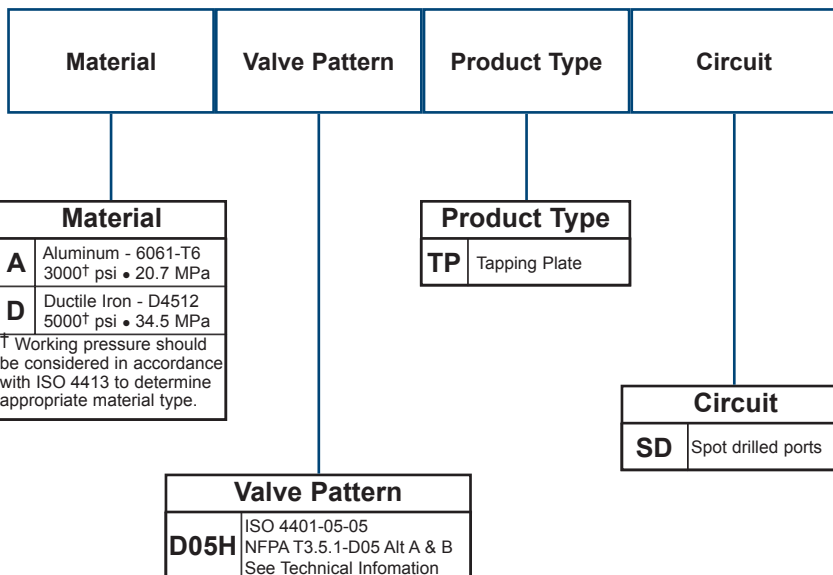
Tapping Plate interface seal kit is supplied.

See page 164 for itemized list.



Specifications, descriptions, and dimensional data are subject to correction or change without notice or incurring obligation. Download latest catalog page revisions at www.daman.com.

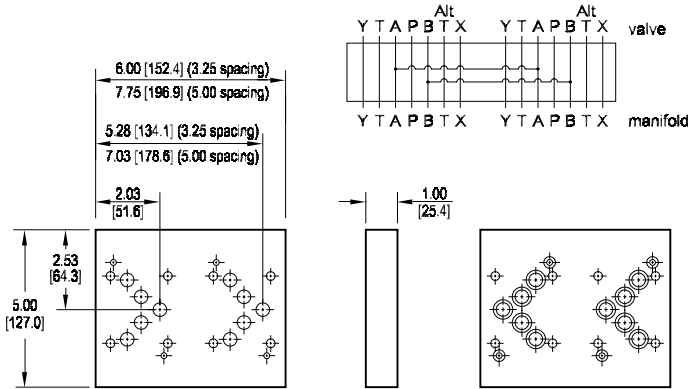
Ordering Information



D05 Tapping Plates with Pilot Ports

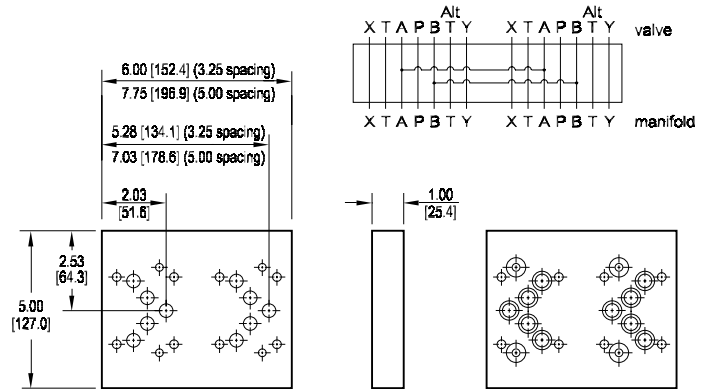
D05(H) Two Station Tapping Plate (USA Pilot Ports) A₁ common to A₂, B₁ common to B₂

Tapping Plate interface seal kit is supplied.
See page 164 for itemized list.



D05(HE) Two Station Tapping Plate (ISO Pilot Ports) A₁ common to A₂, B₁ common to B₂

Tapping Plate interface seal kit is supplied.
See page 164 for itemized list.



Specifications, descriptions, and dimensional data are subject to correction or change without notice or incurring obligation. Download latest catalog page revisions at www.daman.com.

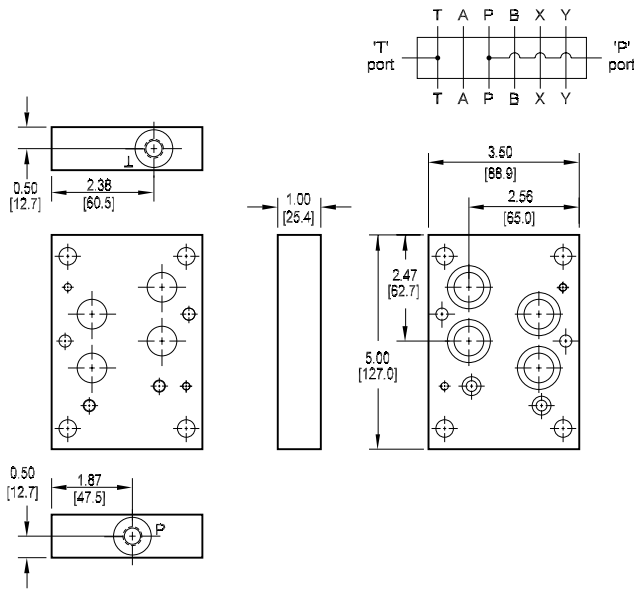
Ordering Information

| Material | Valve Pattern | Product Type | No. of Stations | Valve Spacing | Circuit | | | | | | | | | | | | | | | | | | | | | | | | | | | | | | | | |
|---|---|--------------|-----------------|--|----------|--|--|--|---|---------------|--|-------------|--|--------------|---|---|--------------|--|-----------|---------------|--|-----------------|--|-----------|-------------|--|---------------|--|----------|----------------------|----------|-----------------------|--|---------|--|-----------|------------------------------------|
| <table border="1"> <thead> <tr> <th colspan="2">Material</th> </tr> </thead> <tbody> <tr> <td>A</td> <td>Aluminum - 6061-T6 3000[†] psi • 20.7 MPa</td> </tr> <tr> <td>D</td> <td>Ductile Iron - D4512 5000[†] psi • 34.5 MPa</td> </tr> <tr> <td colspan="2">[†] Working pressure should be considered in accordance with ISO 4413 to determine appropriate material type.</td> </tr> </tbody> </table> | Material | | A | Aluminum - 6061-T6 3000 [†] psi • 20.7 MPa | D | Ductile Iron - D4512 5000 [†] psi • 34.5 MPa | [†] Working pressure should be considered in accordance with ISO 4413 to determine appropriate material type. | | <table border="1"> <thead> <tr> <th colspan="2">Valve Pattern</th> </tr> </thead> <tbody> <tr> <td>D05H</td> <td>(USA std) NFPA T3.5.1-D05 Alt B See Tech Information</td> </tr> <tr> <td>D05HE</td> <td>ISO 4401-05-05 NFPA T3.5.1-D05 Alt A See Tech Information</td> </tr> </tbody> </table> | Valve Pattern | | D05H | (USA std) NFPA T3.5.1-D05 Alt B See Tech Information | D05HE | ISO 4401-05-05 NFPA T3.5.1-D05 Alt A See Tech Information | <table border="1"> <thead> <tr> <th colspan="2">Product Type</th> </tr> </thead> <tbody> <tr> <td>TP</td> <td>Tapping Plate</td> </tr> </tbody> </table> | Product Type | | TP | Tapping Plate | <table border="1"> <thead> <tr> <th colspan="2">No. of Stations</th> </tr> </thead> <tbody> <tr> <td>02</td> <td>02 Stations</td> </tr> </tbody> </table> | No. of Stations | | 02 | 02 Stations | <table border="1"> <thead> <tr> <th colspan="2">Valve Spacing</th> </tr> </thead> <tbody> <tr> <td>3</td> <td>3.25 inch 82.6 mm</td> </tr> <tr> <td>5</td> <td>5.00 inch 127.0 mm</td> </tr> </tbody> </table> | Valve Spacing | | 3 | 3.25 inch 82.6 mm | 5 | 5.00 inch 127.0 mm | <table border="1"> <thead> <tr> <th colspan="2">Circuit</th> </tr> </thead> <tbody> <tr> <td>AB</td> <td>A1 common to A2 B1 common to B2</td> </tr> </tbody> </table> | Circuit | | AB | A1 common to A2 B1 common to B2 |
| Material | | | | | | | | | | | | | | | | | | | | | | | | | | | | | | | | | | | | | |
| A | Aluminum - 6061-T6 3000 [†] psi • 20.7 MPa | | | | | | | | | | | | | | | | | | | | | | | | | | | | | | | | | | | | |
| D | Ductile Iron - D4512 5000 [†] psi • 34.5 MPa | | | | | | | | | | | | | | | | | | | | | | | | | | | | | | | | | | | | |
| [†] Working pressure should be considered in accordance with ISO 4413 to determine appropriate material type. | | | | | | | | | | | | | | | | | | | | | | | | | | | | | | | | | | | | | |
| Valve Pattern | | | | | | | | | | | | | | | | | | | | | | | | | | | | | | | | | | | | | |
| D05H | (USA std) NFPA T3.5.1-D05 Alt B See Tech Information | | | | | | | | | | | | | | | | | | | | | | | | | | | | | | | | | | | | |
| D05HE | ISO 4401-05-05 NFPA T3.5.1-D05 Alt A See Tech Information | | | | | | | | | | | | | | | | | | | | | | | | | | | | | | | | | | | | |
| Product Type | | | | | | | | | | | | | | | | | | | | | | | | | | | | | | | | | | | | | |
| TP | Tapping Plate | | | | | | | | | | | | | | | | | | | | | | | | | | | | | | | | | | | | |
| No. of Stations | | | | | | | | | | | | | | | | | | | | | | | | | | | | | | | | | | | | | |
| 02 | 02 Stations | | | | | | | | | | | | | | | | | | | | | | | | | | | | | | | | | | | | |
| Valve Spacing | | | | | | | | | | | | | | | | | | | | | | | | | | | | | | | | | | | | | |
| 3 | 3.25 inch 82.6 mm | | | | | | | | | | | | | | | | | | | | | | | | | | | | | | | | | | | | |
| 5 | 5.00 inch 127.0 mm | | | | | | | | | | | | | | | | | | | | | | | | | | | | | | | | | | | | |
| Circuit | | | | | | | | | | | | | | | | | | | | | | | | | | | | | | | | | | | | | |
| AB | A1 common to A2 B1 common to B2 | | | | | | | | | | | | | | | | | | | | | | | | | | | | | | | | | | | | |

D07 Tapping Plates

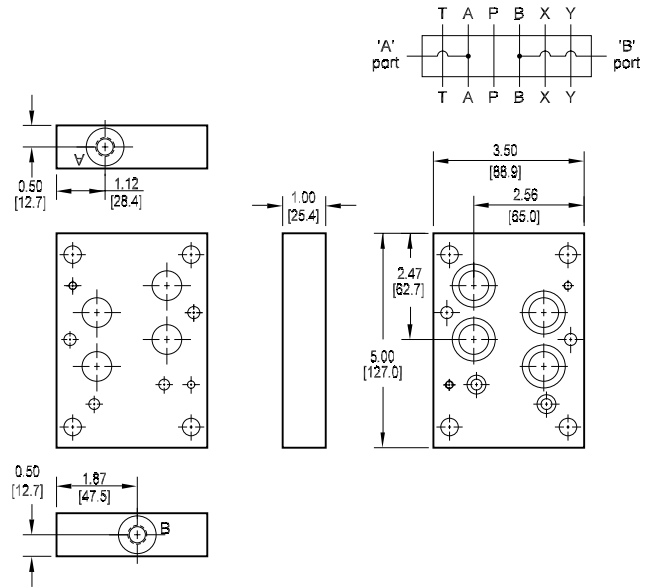
P and T Port Tapping Plate

Tapping Plate hardware / interface seal kit is supplied. See page 164 for itemized list.



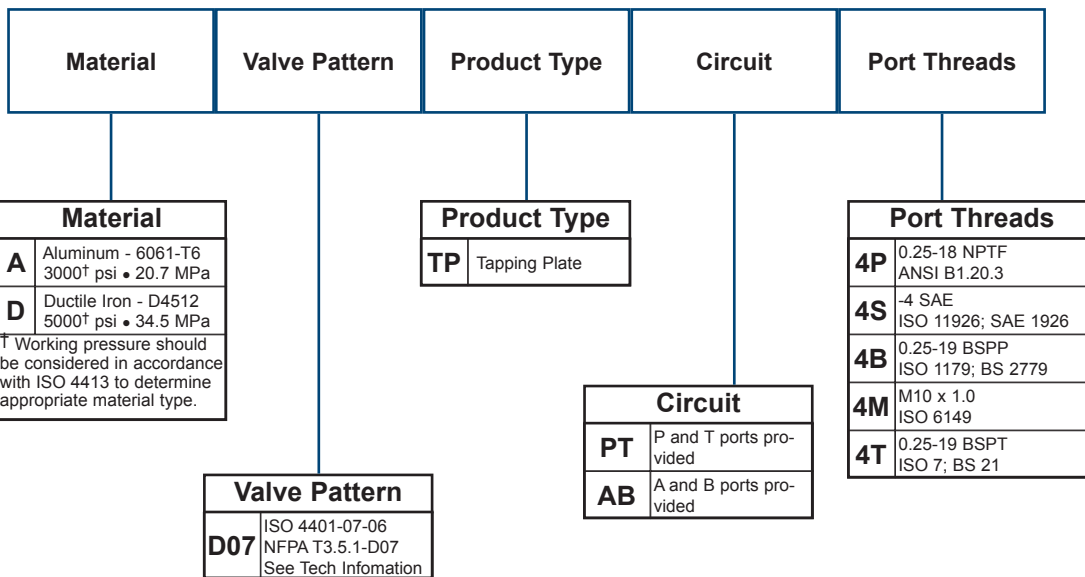
A and B Port Tapping Plate

Tapping Plate hardware / interface seal kit is supplied. See page 164 for itemized list.



Specifications, descriptions, and dimensional data are subject to correction or change without notice or incurring obligation. Download latest catalog page revisions at www.daman.com.

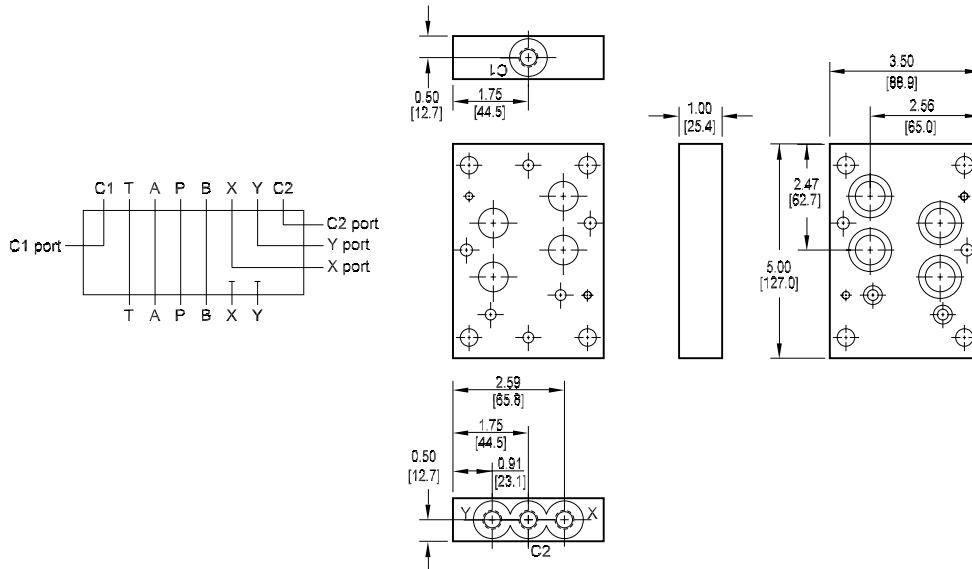
Ordering Information



D07 Tapping Plates

X and Y Port Tapping Plate

Tapping Plate hardware / interface seal kit is supplied. See page 164 for itemized list.



Specifications, descriptions, and dimensional data are subject to correction or change without notice or incurring obligation. Download latest catalog page revisions at www.daman.com.

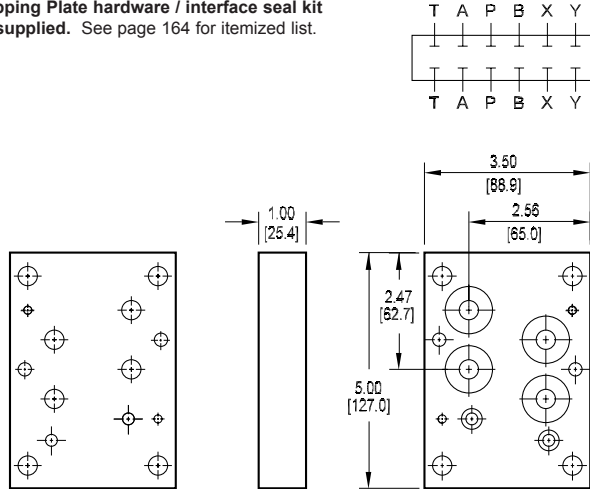
Ordering Information

| Material | Valve Pattern | Product Type | Circuit | Port Threads | | | | | | | | | | | | | | | | | | | | | | | | | | | | | | | | |
|---|--|--------------|----------|--|----------|--|--|--|--|---------------|--|------------|--|---|--------------|--|-----------|---------------|---|---------|--|-----------|------------------------|--|--------------|--|-----------|------------------------------|-----------|-------------------------------|-----------|-----------------------------------|-----------|-----------------------|-----------|------------------------------|
| <table border="1"> <thead> <tr> <th colspan="2">Material</th> </tr> </thead> <tbody> <tr> <td>A</td> <td>Aluminum - 6061-T6 3000[†] psi • 20.7 MPa</td> </tr> <tr> <td>D</td> <td>Ductile Iron - D4512 5000[†] psi • 34.5 MPa</td> </tr> <tr> <td colspan="2">[†] Working pressure should be considered in accordance with ISO 4413 to determine appropriate material type.</td> </tr> </tbody> </table> | Material | | A | Aluminum - 6061-T6 3000 [†] psi • 20.7 MPa | D | Ductile Iron - D4512 5000 [†] psi • 34.5 MPa | [†] Working pressure should be considered in accordance with ISO 4413 to determine appropriate material type. | | <table border="1"> <thead> <tr> <th colspan="2">Valve Pattern</th> </tr> </thead> <tbody> <tr> <td>D07</td> <td>ISO 4401-07-06 NFPA T3.5.1-D07 See Tech Infomation</td> </tr> </tbody> </table> | Valve Pattern | | D07 | ISO 4401-07-06 NFPA T3.5.1-D07 See Tech Infomation | <table border="1"> <thead> <tr> <th colspan="2">Product Type</th> </tr> </thead> <tbody> <tr> <td>TP</td> <td>Tapping Plate</td> </tr> </tbody> </table> | Product Type | | TP | Tapping Plate | <table border="1"> <thead> <tr> <th colspan="2">Circuit</th> </tr> </thead> <tbody> <tr> <td>XY</td> <td>X and Y ports provided</td> </tr> </tbody> </table> | Circuit | | XY | X and Y ports provided | <table border="1"> <thead> <tr> <th colspan="2">Port Threads</th> </tr> </thead> <tbody> <tr> <td>4P</td> <td>0.25-18 NPTF ANSI B1.20.3</td> </tr> <tr> <td>4S</td> <td>-4 SAE ISO 11926; SAE 1926</td> </tr> <tr> <td>4B</td> <td>0.25-19 BSPP ISO 1179; BS 2779</td> </tr> <tr> <td>4M</td> <td>M10 x 1.0 ISO 6149</td> </tr> <tr> <td>4T</td> <td>0.25-19 BSPT ISO 7; BS 21</td> </tr> </tbody> </table> | Port Threads | | 4P | 0.25-18 NPTF ANSI B1.20.3 | 4S | -4 SAE ISO 11926; SAE 1926 | 4B | 0.25-19 BSPP ISO 1179; BS 2779 | 4M | M10 x 1.0 ISO 6149 | 4T | 0.25-19 BSPT ISO 7; BS 21 |
| Material | | | | | | | | | | | | | | | | | | | | | | | | | | | | | | | | | | | | |
| A | Aluminum - 6061-T6 3000 [†] psi • 20.7 MPa | | | | | | | | | | | | | | | | | | | | | | | | | | | | | | | | | | | |
| D | Ductile Iron - D4512 5000 [†] psi • 34.5 MPa | | | | | | | | | | | | | | | | | | | | | | | | | | | | | | | | | | | |
| [†] Working pressure should be considered in accordance with ISO 4413 to determine appropriate material type. | | | | | | | | | | | | | | | | | | | | | | | | | | | | | | | | | | | | |
| Valve Pattern | | | | | | | | | | | | | | | | | | | | | | | | | | | | | | | | | | | | |
| D07 | ISO 4401-07-06 NFPA T3.5.1-D07 See Tech Infomation | | | | | | | | | | | | | | | | | | | | | | | | | | | | | | | | | | | |
| Product Type | | | | | | | | | | | | | | | | | | | | | | | | | | | | | | | | | | | | |
| TP | Tapping Plate | | | | | | | | | | | | | | | | | | | | | | | | | | | | | | | | | | | |
| Circuit | | | | | | | | | | | | | | | | | | | | | | | | | | | | | | | | | | | | |
| XY | X and Y ports provided | | | | | | | | | | | | | | | | | | | | | | | | | | | | | | | | | | | |
| Port Threads | | | | | | | | | | | | | | | | | | | | | | | | | | | | | | | | | | | | |
| 4P | 0.25-18 NPTF ANSI B1.20.3 | | | | | | | | | | | | | | | | | | | | | | | | | | | | | | | | | | | |
| 4S | -4 SAE ISO 11926; SAE 1926 | | | | | | | | | | | | | | | | | | | | | | | | | | | | | | | | | | | |
| 4B | 0.25-19 BSPP ISO 1179; BS 2779 | | | | | | | | | | | | | | | | | | | | | | | | | | | | | | | | | | | |
| 4M | M10 x 1.0 ISO 6149 | | | | | | | | | | | | | | | | | | | | | | | | | | | | | | | | | | | |
| 4T | 0.25-19 BSPT ISO 7; BS 21 | | | | | | | | | | | | | | | | | | | | | | | | | | | | | | | | | | | |

D07 Tapping Plates

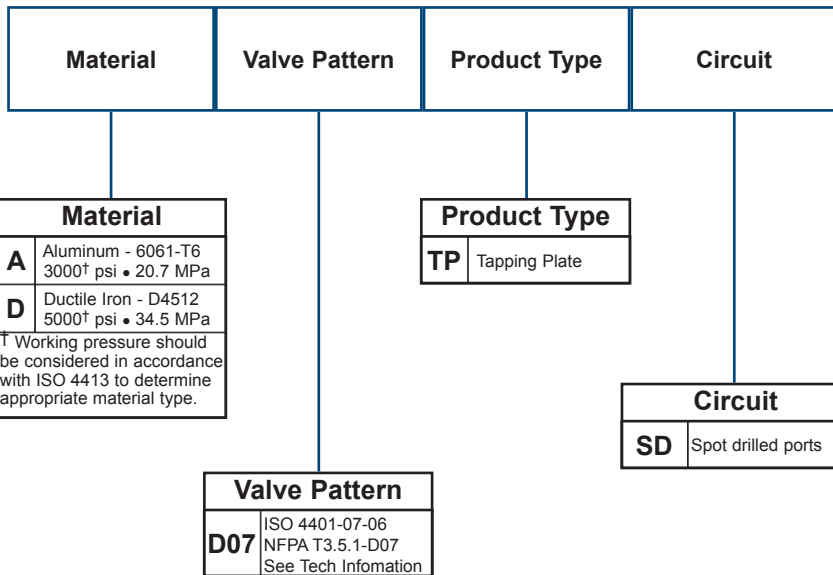
Spot Drilled Tapping Plate

Tapping Plate hardware / interface seal kit is supplied. See page 164 for itemized list.



Specifications, descriptions, and dimensional data are subject to correction or change without notice or incurring obligation. Download latest catalog page revisions at www.daman.com.

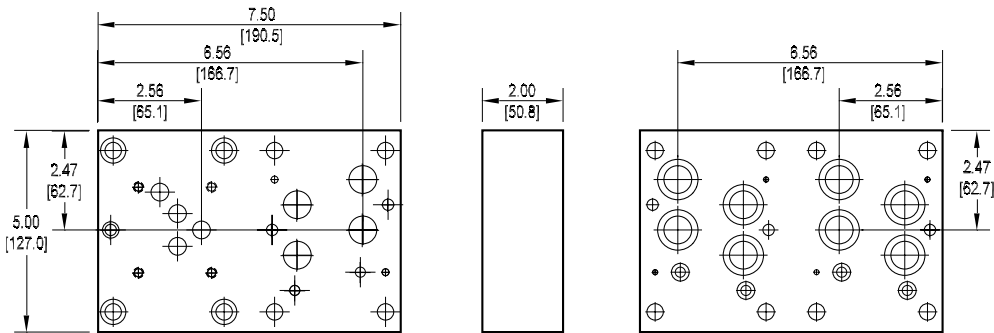
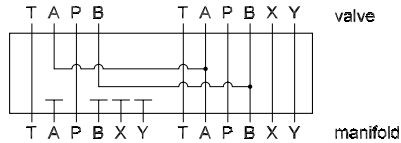
Ordering Information



D07 Tapping Plates

D05-D07 Two Station Tapping Plate A₁ common to A₂, B₁ common to B₂

D05 Valve mtg: UNC 0.25-20 x 0.75 [19] DP
Tapping Plate hardware / interface seal kit is supplied. * See page 164 for itemized list.
 * (6) bolts are user supplied and must pass through valve and tapping plate to thread into manifold.



Specifications, descriptions, and dimensional data are subject to correction or change without notice or incurring obligation. Download latest catalog page revisions at www.daman.com.

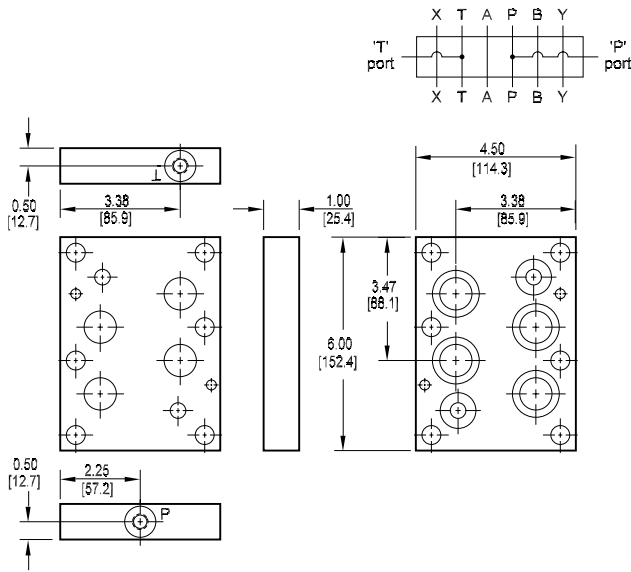
Ordering Information

| Material | Valve Pattern Station 1 | Valve Pattern Station 2 | Product Type | No. of Stations | Valve Spacing | Circuit | | | | | | | | | | | | | | | | | | | | | | | | | | | | | | | | |
|--|---|-------------------------|--------------|--|---------------|--|---|--|--|-----------------|--|------------|---|--|-----------------|--|------------|---|--|--------------|--|-----------|---------------|---|-----------------|--|-----------|-------------|---|---------------|--|----------|-----------------------|---|---------|--|-----------|------------------------------------|
| <table border="1"> <tr><th colspan="2">Material</th></tr> <tr><td>A</td><td>Aluminum - 6061-T6 3000† psi • 20.7 MPa</td></tr> <tr><td>D</td><td>Ductile Iron - D4512 5000† psi • 34.5 MPa</td></tr> <tr><td colspan="2">† Working pressure should be considered in accordance with ISO 4413 to determine appropriate material type.</td></tr> </table> | Material | | A | Aluminum - 6061-T6 3000† psi • 20.7 MPa | D | Ductile Iron - D4512 5000† psi • 34.5 MPa | † Working pressure should be considered in accordance with ISO 4413 to determine appropriate material type. | | <table border="1"> <tr><th colspan="2">Valve Station 1</th></tr> <tr><td>D05</td><td>ISO 4401-05-04 NFPA T3.5.1-D05 See Tech Information</td></tr> </table> | Valve Station 1 | | D05 | ISO 4401-05-04 NFPA T3.5.1-D05 See Tech Information | <table border="1"> <tr><th colspan="2">Valve Station 2</th></tr> <tr><td>D07</td><td>ISO 4401-07-06 NFPA T3.5.1-D07 See Tech Information</td></tr> </table> | Valve Station 2 | | D07 | ISO 4401-07-06 NFPA T3.5.1-D07 See Tech Information | <table border="1"> <tr><th colspan="2">Product Type</th></tr> <tr><td>TP</td><td>Tapping Plate</td></tr> </table> | Product Type | | TP | Tapping Plate | <table border="1"> <tr><th colspan="2">No. of Stations</th></tr> <tr><td>02</td><td>02 Stations</td></tr> </table> | No. of Stations | | 02 | 02 Stations | <table border="1"> <tr><th colspan="2">Valve Spacing</th></tr> <tr><td>4</td><td>4.00 inch 101.6 mm</td></tr> </table> | Valve Spacing | | 4 | 4.00 inch 101.6 mm | <table border="1"> <tr><th colspan="2">Circuit</th></tr> <tr><td>AB</td><td>A1 common to A2 B1 common to B2</td></tr> </table> | Circuit | | AB | A1 common to A2 B1 common to B2 |
| Material | | | | | | | | | | | | | | | | | | | | | | | | | | | | | | | | | | | | | | |
| A | Aluminum - 6061-T6 3000† psi • 20.7 MPa | | | | | | | | | | | | | | | | | | | | | | | | | | | | | | | | | | | | | |
| D | Ductile Iron - D4512 5000† psi • 34.5 MPa | | | | | | | | | | | | | | | | | | | | | | | | | | | | | | | | | | | | | |
| † Working pressure should be considered in accordance with ISO 4413 to determine appropriate material type. | | | | | | | | | | | | | | | | | | | | | | | | | | | | | | | | | | | | | | |
| Valve Station 1 | | | | | | | | | | | | | | | | | | | | | | | | | | | | | | | | | | | | | | |
| D05 | ISO 4401-05-04 NFPA T3.5.1-D05 See Tech Information | | | | | | | | | | | | | | | | | | | | | | | | | | | | | | | | | | | | | |
| Valve Station 2 | | | | | | | | | | | | | | | | | | | | | | | | | | | | | | | | | | | | | | |
| D07 | ISO 4401-07-06 NFPA T3.5.1-D07 See Tech Information | | | | | | | | | | | | | | | | | | | | | | | | | | | | | | | | | | | | | |
| Product Type | | | | | | | | | | | | | | | | | | | | | | | | | | | | | | | | | | | | | | |
| TP | Tapping Plate | | | | | | | | | | | | | | | | | | | | | | | | | | | | | | | | | | | | | |
| No. of Stations | | | | | | | | | | | | | | | | | | | | | | | | | | | | | | | | | | | | | | |
| 02 | 02 Stations | | | | | | | | | | | | | | | | | | | | | | | | | | | | | | | | | | | | | |
| Valve Spacing | | | | | | | | | | | | | | | | | | | | | | | | | | | | | | | | | | | | | | |
| 4 | 4.00 inch 101.6 mm | | | | | | | | | | | | | | | | | | | | | | | | | | | | | | | | | | | | | |
| Circuit | | | | | | | | | | | | | | | | | | | | | | | | | | | | | | | | | | | | | | |
| AB | A1 common to A2 B1 common to B2 | | | | | | | | | | | | | | | | | | | | | | | | | | | | | | | | | | | | | |

D08 Tapping Plates

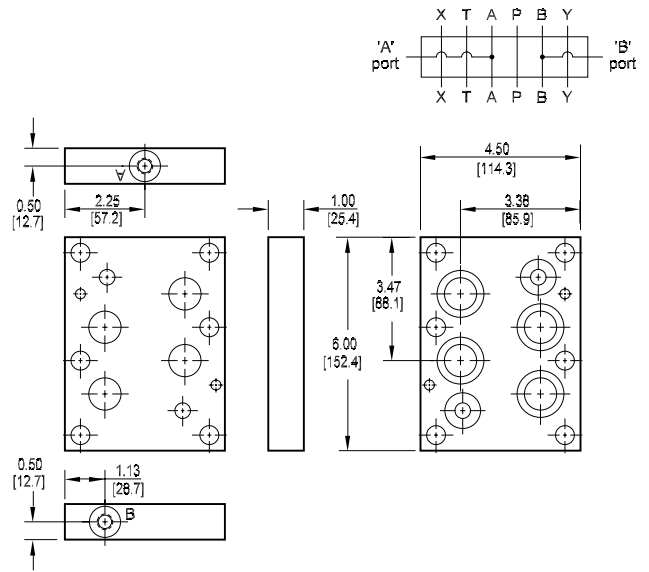
P and T Port Tapping Plate

Tapping Plate hardware / interface seal kit is supplied. See page 164 for itemized list.



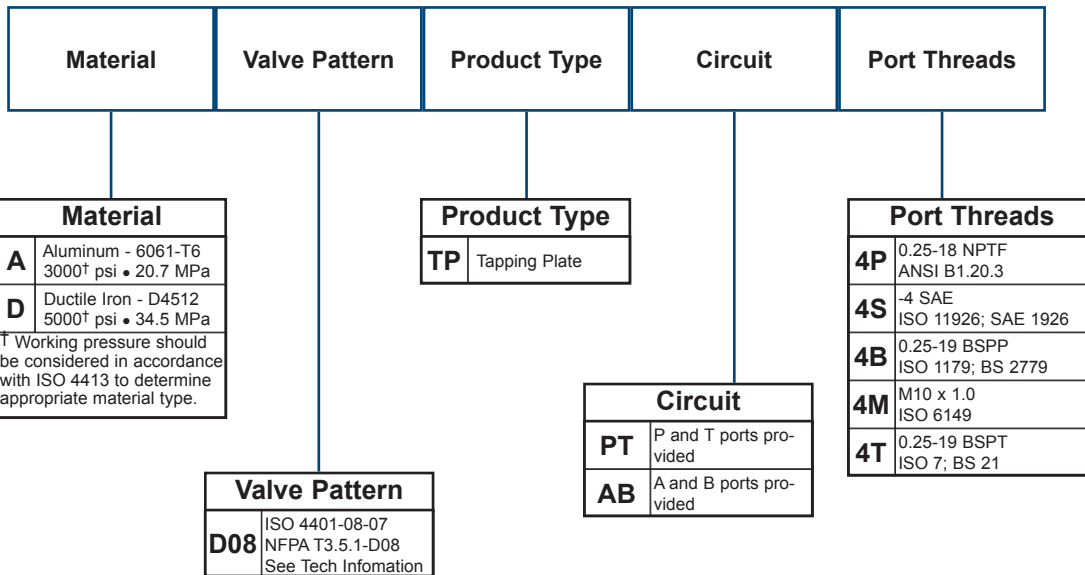
A and B Port Tapping Plate

Tapping Plate hardware / interface seal kit is supplied. See page 164 for itemized list.



Specifications, descriptions, and dimensional data are subject to correction or change without notice or incurring obligation. Download latest catalog page revisions at www.daman.com.

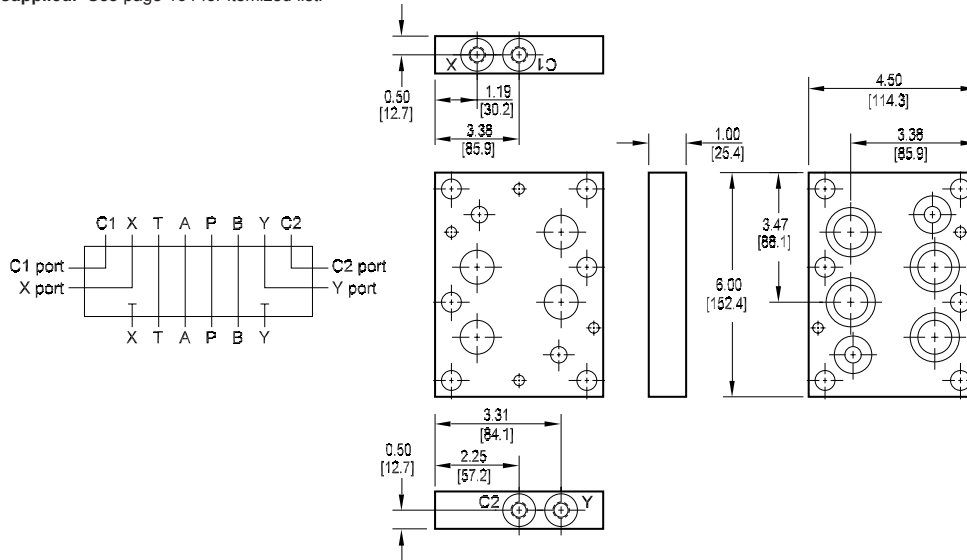
Ordering Information



D08 Tapping Plates

X and Y Port Tapping Plate

Tapping Plate hardware / interface seal kit is supplied. See page 164 for itemized list.



Specifications, descriptions, and dimensional data are subject to correction or change without notice or incurring obligation. Download latest catalog page revisions at www.daman.com.

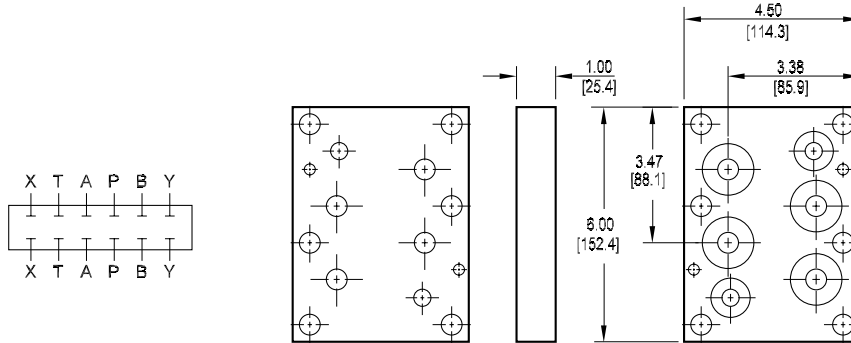
Ordering Information

| Material | Valve Pattern | Product Type | Circuit | Port Threads | | | | | | | | | | | | | | | | | | | | | | | | | | | | | | | | |
|---|---|--------------|----------|--|----------|--|--|--|---|---------------|--|------------|---|---|--------------|--|-----------|---------------|---|---------|--|-----------|------------------------|--|--------------|--|-----------|------------------------------|-----------|-------------------------------|-----------|-----------------------------------|-----------|-----------------------|-----------|------------------------------|
| <table border="1"> <thead> <tr> <th colspan="2">Material</th> </tr> </thead> <tbody> <tr> <td>A</td> <td>Aluminum - 6061-T6 3000[†] psi • 20.7 MPa</td> </tr> <tr> <td>D</td> <td>Ductile Iron - D4512 5000[†] psi • 34.5 MPa</td> </tr> <tr> <td colspan="2"> [†] Working pressure should be considered in accordance with ISO 4413 to determine appropriate material type. </td> </tr> </tbody> </table> | Material | | A | Aluminum - 6061-T6 3000 [†] psi • 20.7 MPa | D | Ductile Iron - D4512 5000 [†] psi • 34.5 MPa | [†] Working pressure should be considered in accordance with ISO 4413 to determine appropriate material type. | | <table border="1"> <thead> <tr> <th colspan="2">Valve Pattern</th> </tr> </thead> <tbody> <tr> <td>D08</td> <td>ISO 4401-08-07 NFPA T3.5.1-D08 See Tech Information</td> </tr> </tbody> </table> | Valve Pattern | | D08 | ISO 4401-08-07 NFPA T3.5.1-D08 See Tech Information | <table border="1"> <thead> <tr> <th colspan="2">Product Type</th> </tr> </thead> <tbody> <tr> <td>TP</td> <td>Tapping Plate</td> </tr> </tbody> </table> | Product Type | | TP | Tapping Plate | <table border="1"> <thead> <tr> <th colspan="2">Circuit</th> </tr> </thead> <tbody> <tr> <td>XY</td> <td>X and Y ports provided</td> </tr> </tbody> </table> | Circuit | | XY | X and Y ports provided | <table border="1"> <thead> <tr> <th colspan="2">Port Threads</th> </tr> </thead> <tbody> <tr> <td>4P</td> <td>0.25-18 NPTF ANSI B1.20.3</td> </tr> <tr> <td>4S</td> <td>-4 SAE ISO 11926; SAE 1926</td> </tr> <tr> <td>4B</td> <td>0.25-19 BSPP ISO 1179; BS 2779</td> </tr> <tr> <td>4M</td> <td>M10 x 1.0 ISO 6149</td> </tr> <tr> <td>4T</td> <td>0.25-19 BSPT ISO 7; BS 21</td> </tr> </tbody> </table> | Port Threads | | 4P | 0.25-18 NPTF ANSI B1.20.3 | 4S | -4 SAE ISO 11926; SAE 1926 | 4B | 0.25-19 BSPP ISO 1179; BS 2779 | 4M | M10 x 1.0 ISO 6149 | 4T | 0.25-19 BSPT ISO 7; BS 21 |
| Material | | | | | | | | | | | | | | | | | | | | | | | | | | | | | | | | | | | | |
| A | Aluminum - 6061-T6 3000 [†] psi • 20.7 MPa | | | | | | | | | | | | | | | | | | | | | | | | | | | | | | | | | | | |
| D | Ductile Iron - D4512 5000 [†] psi • 34.5 MPa | | | | | | | | | | | | | | | | | | | | | | | | | | | | | | | | | | | |
| [†] Working pressure should be considered in accordance with ISO 4413 to determine appropriate material type. | | | | | | | | | | | | | | | | | | | | | | | | | | | | | | | | | | | | |
| Valve Pattern | | | | | | | | | | | | | | | | | | | | | | | | | | | | | | | | | | | | |
| D08 | ISO 4401-08-07 NFPA T3.5.1-D08 See Tech Information | | | | | | | | | | | | | | | | | | | | | | | | | | | | | | | | | | | |
| Product Type | | | | | | | | | | | | | | | | | | | | | | | | | | | | | | | | | | | | |
| TP | Tapping Plate | | | | | | | | | | | | | | | | | | | | | | | | | | | | | | | | | | | |
| Circuit | | | | | | | | | | | | | | | | | | | | | | | | | | | | | | | | | | | | |
| XY | X and Y ports provided | | | | | | | | | | | | | | | | | | | | | | | | | | | | | | | | | | | |
| Port Threads | | | | | | | | | | | | | | | | | | | | | | | | | | | | | | | | | | | | |
| 4P | 0.25-18 NPTF ANSI B1.20.3 | | | | | | | | | | | | | | | | | | | | | | | | | | | | | | | | | | | |
| 4S | -4 SAE ISO 11926; SAE 1926 | | | | | | | | | | | | | | | | | | | | | | | | | | | | | | | | | | | |
| 4B | 0.25-19 BSPP ISO 1179; BS 2779 | | | | | | | | | | | | | | | | | | | | | | | | | | | | | | | | | | | |
| 4M | M10 x 1.0 ISO 6149 | | | | | | | | | | | | | | | | | | | | | | | | | | | | | | | | | | | |
| 4T | 0.25-19 BSPT ISO 7; BS 21 | | | | | | | | | | | | | | | | | | | | | | | | | | | | | | | | | | | |

D08 Tapping Plates

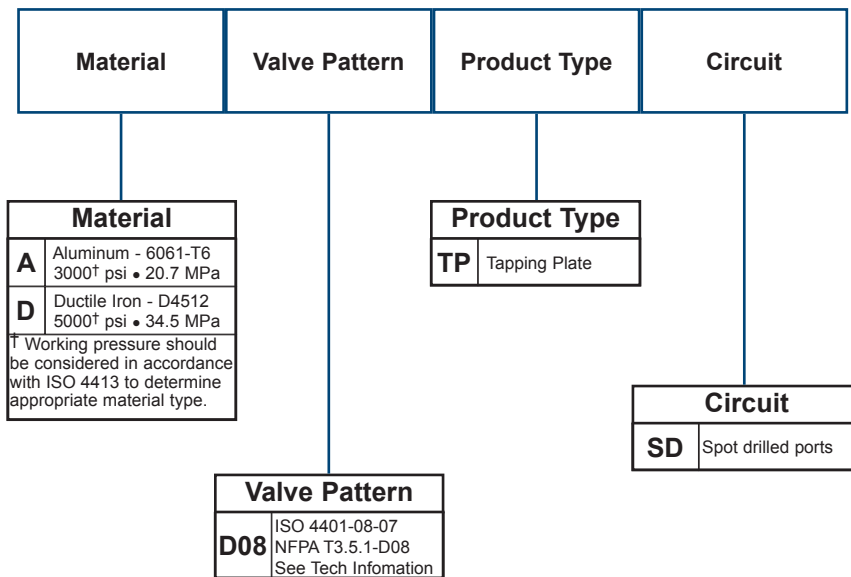
Spot Drilled Tapping Plate

Tapping Plate hardware / interface seal kit is supplied. See page 164 for itemized list.



Specifications, descriptions, and dimensional data are subject to correction or change without notice or incurring obligation. Download latest catalog page revisions at www.daman.com.

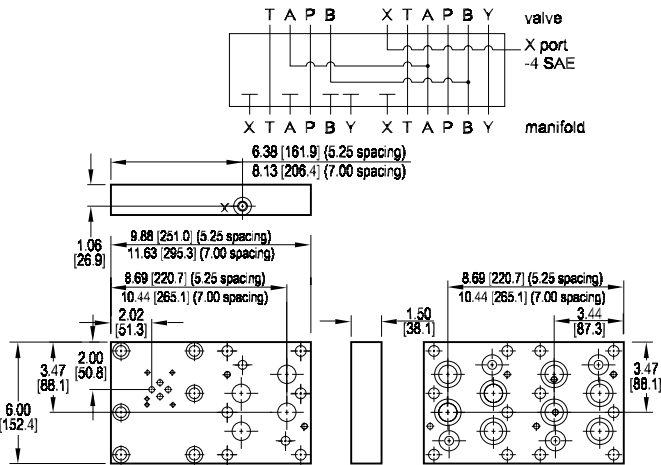
Ordering Information



D08 Tapping Plates

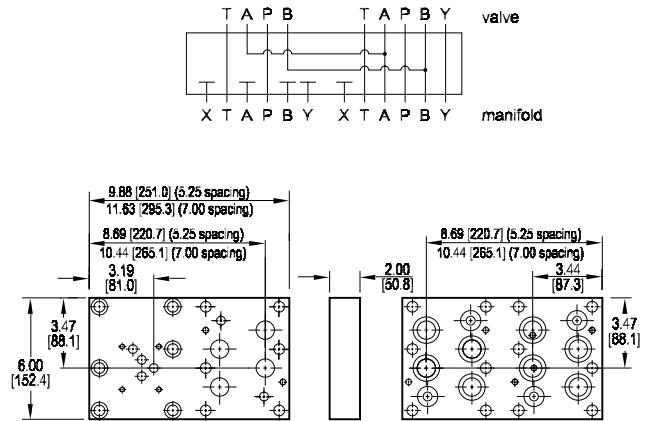
D03-D08 Two Station Tapping Plate A₁ common to A₂, B₁ common to B₂

D03 Valve mtg: UNC #10-24 x 0.62 [16] DP
Tapping Plate hardware / interface seal kit is supplied. * See page 164 for itemized list.
 * (6) bolts are user supplied and must pass through valve and tapping plate to thread into manifold.



D05-D08 Two Station Tapping Plate A₁ common to A₂, B₁ common to B₂

D05 Valve mtg: UNC 0.25-20 x 0.75 [19] DP
Tapping Plate hardware / interface seal kit is supplied. * See page 164 for itemized list.
 * (6) bolts are user supplied and must pass through valve and tapping plate to thread into manifold.



Specifications, descriptions, and dimensional data are subject to correction or change without notice or incurring obligation. Download latest catalog page revisions at www.daman.com.

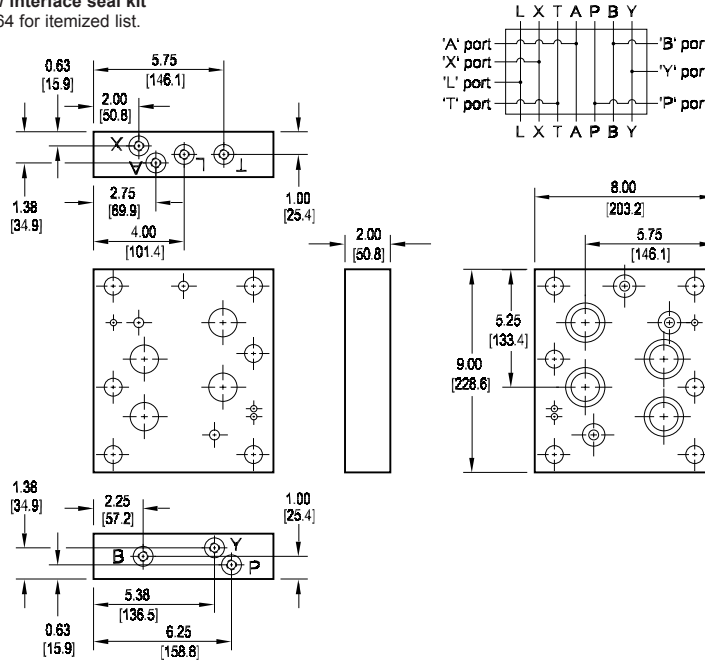
Ordering Information

| Material | Valve Pattern Station 1 | Valve Pattern Station 2 | Product Type | No. of Stations | Valve Spacing | Circuit | | | | | | | | | | | | | | | | | | | | | | | | | | | | | | | | | | | | |
|--|---|-------------------------|--------------|--|---------------|--|---|--|---|-----------------|--|------------|---|------------|---|--|-----------------|--|------------|---|--|--------------|--|-----------|---------------|---|-----------------|--|-----------|-------------|---|---------------|--|----------|-----------------------|----------|-----------------------|---|---------|--|-----------|------------------------------------|
| <table border="1"> <tr><th colspan="2">Material</th></tr> <tr><td>A</td><td>Aluminum - 6061-T6 3000† psi • 20.7 MPa</td></tr> <tr><td>D</td><td>Ductile Iron - D4512 5000† psi • 34.5 MPa</td></tr> <tr><td colspan="2">† Working pressure should be considered in accordance with ISO 4413 to determine appropriate material type.</td></tr> </table> | Material | | A | Aluminum - 6061-T6 3000† psi • 20.7 MPa | D | Ductile Iron - D4512 5000† psi • 34.5 MPa | † Working pressure should be considered in accordance with ISO 4413 to determine appropriate material type. | | <table border="1"> <tr><th colspan="2">Valve Station 1</th></tr> <tr><td>D03</td><td>ISO 4401-03-02 NFPA T3.5.1-D03 See Tech Information</td></tr> <tr><td>D05</td><td>ISO 4401-05-04 NFPA T3.5.1-D05 See Tech Information</td></tr> </table> | Valve Station 1 | | D03 | ISO 4401-03-02 NFPA T3.5.1-D03 See Tech Information | D05 | ISO 4401-05-04 NFPA T3.5.1-D05 See Tech Information | <table border="1"> <tr><th colspan="2">Valve Station 2</th></tr> <tr><td>D08</td><td>ISO 4401-08-07 NFPA T3.5.1-D08 See Tech Information</td></tr> </table> | Valve Station 2 | | D08 | ISO 4401-08-07 NFPA T3.5.1-D08 See Tech Information | <table border="1"> <tr><th colspan="2">Product Type</th></tr> <tr><td>TP</td><td>Tapping Plate</td></tr> </table> | Product Type | | TP | Tapping Plate | <table border="1"> <tr><th colspan="2">No. of Stations</th></tr> <tr><td>02</td><td>02 Stations</td></tr> </table> | No. of Stations | | 02 | 02 Stations | <table border="1"> <tr><th colspan="2">Valve Spacing</th></tr> <tr><td>5</td><td>5.25 inch 133.4 mm</td></tr> <tr><td>7</td><td>7.00 inch 177.8 mm</td></tr> </table> | Valve Spacing | | 5 | 5.25 inch 133.4 mm | 7 | 7.00 inch 177.8 mm | <table border="1"> <tr><th colspan="2">Circuit</th></tr> <tr><td>AB</td><td>A1 common to A2 B1 common to B2</td></tr> </table> | Circuit | | AB | A1 common to A2 B1 common to B2 |
| Material | | | | | | | | | | | | | | | | | | | | | | | | | | | | | | | | | | | | | | | | | | |
| A | Aluminum - 6061-T6 3000† psi • 20.7 MPa | | | | | | | | | | | | | | | | | | | | | | | | | | | | | | | | | | | | | | | | | |
| D | Ductile Iron - D4512 5000† psi • 34.5 MPa | | | | | | | | | | | | | | | | | | | | | | | | | | | | | | | | | | | | | | | | | |
| † Working pressure should be considered in accordance with ISO 4413 to determine appropriate material type. | | | | | | | | | | | | | | | | | | | | | | | | | | | | | | | | | | | | | | | | | | |
| Valve Station 1 | | | | | | | | | | | | | | | | | | | | | | | | | | | | | | | | | | | | | | | | | | |
| D03 | ISO 4401-03-02 NFPA T3.5.1-D03 See Tech Information | | | | | | | | | | | | | | | | | | | | | | | | | | | | | | | | | | | | | | | | | |
| D05 | ISO 4401-05-04 NFPA T3.5.1-D05 See Tech Information | | | | | | | | | | | | | | | | | | | | | | | | | | | | | | | | | | | | | | | | | |
| Valve Station 2 | | | | | | | | | | | | | | | | | | | | | | | | | | | | | | | | | | | | | | | | | | |
| D08 | ISO 4401-08-07 NFPA T3.5.1-D08 See Tech Information | | | | | | | | | | | | | | | | | | | | | | | | | | | | | | | | | | | | | | | | | |
| Product Type | | | | | | | | | | | | | | | | | | | | | | | | | | | | | | | | | | | | | | | | | | |
| TP | Tapping Plate | | | | | | | | | | | | | | | | | | | | | | | | | | | | | | | | | | | | | | | | | |
| No. of Stations | | | | | | | | | | | | | | | | | | | | | | | | | | | | | | | | | | | | | | | | | | |
| 02 | 02 Stations | | | | | | | | | | | | | | | | | | | | | | | | | | | | | | | | | | | | | | | | | |
| Valve Spacing | | | | | | | | | | | | | | | | | | | | | | | | | | | | | | | | | | | | | | | | | | |
| 5 | 5.25 inch 133.4 mm | | | | | | | | | | | | | | | | | | | | | | | | | | | | | | | | | | | | | | | | | |
| 7 | 7.00 inch 177.8 mm | | | | | | | | | | | | | | | | | | | | | | | | | | | | | | | | | | | | | | | | | |
| Circuit | | | | | | | | | | | | | | | | | | | | | | | | | | | | | | | | | | | | | | | | | | |
| AB | A1 common to A2 B1 common to B2 | | | | | | | | | | | | | | | | | | | | | | | | | | | | | | | | | | | | | | | | | |

D10 Tapping Plates

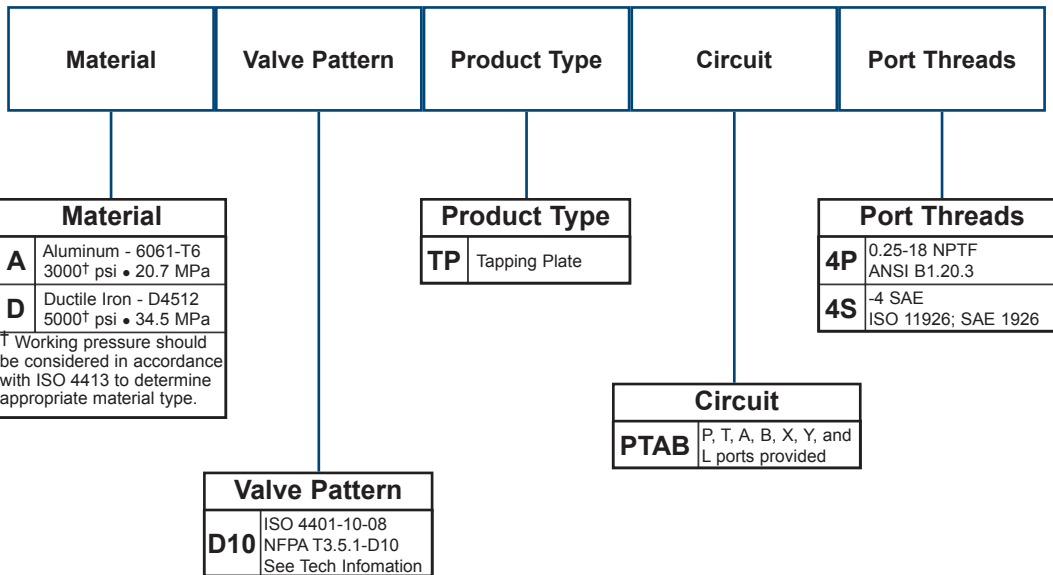
P, T, A, B, X, Y, and L Port Tapping Plate

Tapping Plate hardware / interface seal kit is supplied. See page 164 for itemized list.



Specifications, descriptions, and dimensional data are subject to correction or change without notice or incurring obligation. Download latest catalog page revisions at www.daman.com.

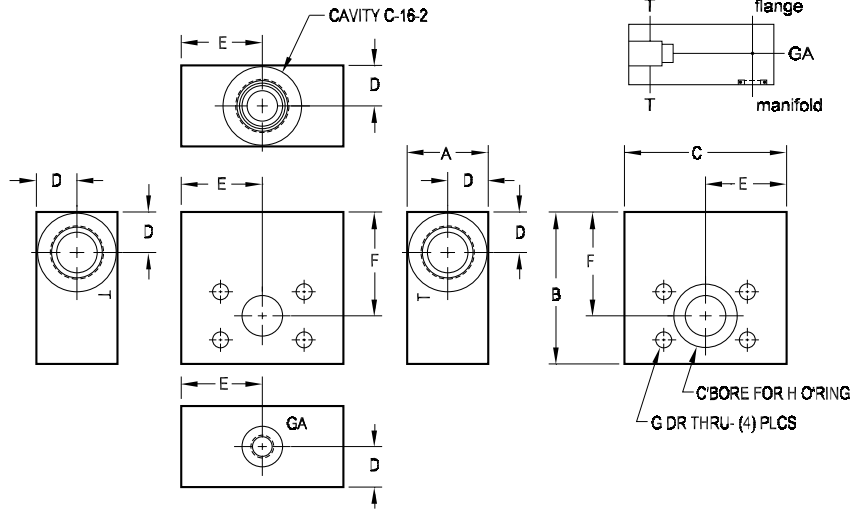
Ordering Information



Aluminum Flange Mount Bodies

Flange Mount Body with 2-port Cavity

Flange interface seal is supplied. See chart.
 Plug for GA Port (-6 SAE) is supplied.
 (4) mounting bolts are user supplied and must pass through flange and valve body to thread into customers flange interface.



| PART NO. | A | B | C | D |
|------------------|----------------|-----------------|-----------------|----------------|
| AFMBC16212F6116S | 2.00 [50.8] | 3.50 [88.9] | 4.00 [101.6] | 1.00 [25.4] |
| AFMBC16216F6116S | 2.00 [50.8] | 3.75 [95.3] | 4.00 [101.6] | 1.00 [25.4] |
| AFMBC16220F6116S | 2.00 [50.8] | 4.25 [108.0] | 4.00 [101.6] | 1.00 [25.4] |
| AFMBC16224F6116S | 2.00 [50.8] | 4.63 [117.5] | 4.00 [101.6] | 1.00 [25.4] |

| PART NO. | E | F | G | H |
|------------------|----------------|----------------|----------------|------|
| AFMBC16212F6116S | 2.00 [50.8] | 2.44 [61.9] | 0.41 [10.3] | -214 |
| AFMBC16216F6116S | 2.00 [50.8] | 2.56 [65.1] | 0.41 [10.3] | -219 |
| AFMBC16220F6116S | 2.00 [50.8] | 2.75 [69.9] | 0.47 [11.9] | -222 |
| AFMBC16224F6116S | 2.00 [50.8] | 2.88 [73.0] | 0.53 [13.5] | -225 |

Specifications, descriptions, and dimensional data are subject to correction or change without notice or incurring obligation. Download latest catalog page revisions at www.daman.com.

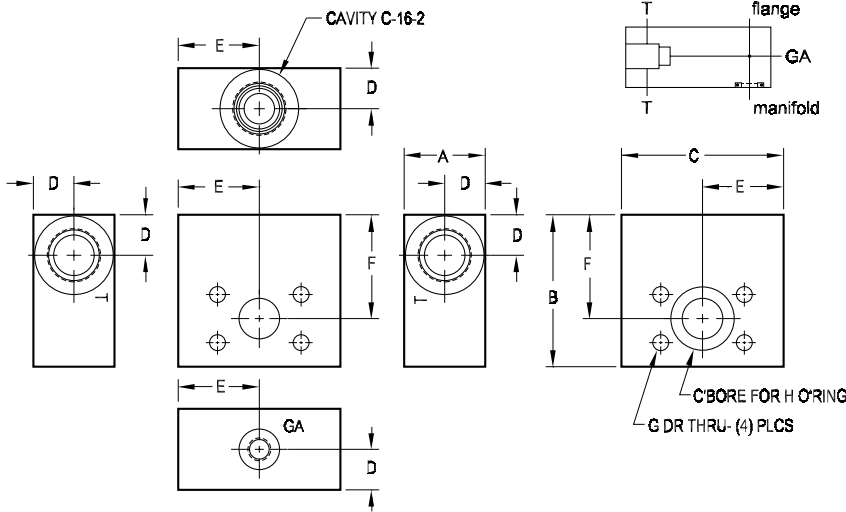
Ordering Information

| Material | Product Type | Cavity Type | Cavity Size | Flange Size | Flange Rating | Port Threads |
|--|------------------------------|---|--------------------------|--|---|--|
| A Aluminum - 6061-T6 3000† psi • 20.7 MPa † Working pressure should be considered in accordance with ISO 4413 to determine appropriate material type. | FMB Flange Mount Body | C Industry Standard Common Cavity | 162 Cavity C-16-2 | 12F ISO 6162 - DN19 Split Flange SAE Size 12 (0.75") Flange 16F ISO 6162 - DN25 Split Flange SAE Size 16 (1.00") Flange 20F ISO 6162 - DN32 Split Flange SAE Size 20 (1.25") Flange 24F ISO 6162 - DN38 Split Flange SAE Size 24 (1.50") Flange | 61 ISO 6162 - 2.5 to 35 MPa • SAE code 61 | 16S -16 SAE "T" Ports -6 SAE "GA" Port ISO 11926; SAE 1926 |

Ductile Iron Flange Mount Bodies

Flange Mount Body with 2-port Cavity

Flange interface seal is supplied. See chart.
 Plug for GA Port (-6 SAE) is supplied.
 (4) mounting bolts are user supplied and must pass through flange and valve body to thread into customers flange interface.



| PART NO. | A | B | C | D |
|------------------|----------------|-----------------|-----------------|----------------|
| DFMBC16216F6216S | 2.00 [50.8] | 4.13 [104.8] | 4.00 [101.6] | 1.00 [25.4] |
| DFMBC16220F6216S | 2.00 [50.8] | 4.38 [111.1] | 4.00 [101.6] | 1.00 [25.4] |
| DFMBC16224F6216S | 2.00 [50.8] | 4.88 [123.8] | 4.50 [114.3] | 1.00 [25.4] |

| PART NO. | E | F | G | H |
|------------------|----------------|----------------|----------------|------|
| DFMBC16216F6216S | 2.00 [50.8] | 2.69 [68.3] | 0.47 [11.9] | -219 |
| DFMBC16220F6216S | 2.00 [50.8] | 2.81 [71.4] | 0.53 [13.5] | -222 |
| DFMBC16224F6216S | 2.25 [57.2] | 2.97 [75.4] | 0.66 [16.7] | -225 |

Specifications, descriptions, and dimensional data are subject to correction or change without notice or incurring obligation. Download latest catalog page revisions at www.daman.com.

Ordering Information

| Material | Product Type | Cavity Type | Cavity Size | Flange Size | Flange Rating | Port Threads | | | | | | | | | | | | | | | | | | | | | | | | | | | | | | | | | | |
|---|---|-------------|-------------|--|---|--------------|---|--------------|--|------------|-------------------|--|-------------|--|----------|------------------------------------|--|-------------|--|------------|---------------|--|-------------|--|------------|--|------------|--|------------|--|--|---------------|--|-----------|-----------------------------------|--|--------------|--|------------|---|
| <table border="1"> <tr><th colspan="2">Material</th></tr> <tr><td>D</td><td>Ductile Iron - D4512 5000† psi • 34.5 MPa</td></tr> <tr><td colspan="2">† Working pressure should be considered in accordance with ISO 4413 to determine appropriate material type.</td></tr> </table> | Material | | D | Ductile Iron - D4512 5000† psi • 34.5 MPa | † Working pressure should be considered in accordance with ISO 4413 to determine appropriate material type. | | <table border="1"> <tr><th colspan="2">Product Type</th></tr> <tr><td>FMB</td><td>Flange Mount Body</td></tr> </table> | Product Type | | FMB | Flange Mount Body | <table border="1"> <tr><th colspan="2">Cavity Type</th></tr> <tr><td>C</td><td>Industry Standard Common Cavity</td></tr> </table> | Cavity Type | | C | Industry Standard Common Cavity | <table border="1"> <tr><th colspan="2">Cavity Size</th></tr> <tr><td>162</td><td>Cavity C-16-2</td></tr> </table> | Cavity Size | | 162 | Cavity C-16-2 | <table border="1"> <tr><th colspan="2">Flange Size</th></tr> <tr><td>16F</td><td>ISO 6162 - DN25 Split Flange SAE Size 16 (1.00") Flange</td></tr> <tr><td>20F</td><td>ISO 6162 - DN32 Split Flange SAE Size 20 (1.25") Flange</td></tr> <tr><td>24F</td><td>ISO 6162 - DN38 Split Flange SAE Size 24 (1.50") Flange</td></tr> </table> | Flange Size | | 16F | ISO 6162 - DN25 Split Flange SAE Size 16 (1.00") Flange | 20F | ISO 6162 - DN32 Split Flange SAE Size 20 (1.25") Flange | 24F | ISO 6162 - DN38 Split Flange SAE Size 24 (1.50") Flange | <table border="1"> <tr><th colspan="2">Flange Rating</th></tr> <tr><td>62</td><td>ISO 6162 -40 MPa • SAE code 62</td></tr> </table> | Flange Rating | | 62 | ISO 6162 -40 MPa • SAE code 62 | <table border="1"> <tr><th colspan="2">Port Threads</th></tr> <tr><td>16S</td><td>-16 SAE "T" Ports -6 SAE "GA" Port ISO 11926; SAE 1926</td></tr> </table> | Port Threads | | 16S | -16 SAE "T" Ports -6 SAE "GA" Port ISO 11926; SAE 1926 |
| Material | | | | | | | | | | | | | | | | | | | | | | | | | | | | | | | | | | | | | | | | |
| D | Ductile Iron - D4512 5000† psi • 34.5 MPa | | | | | | | | | | | | | | | | | | | | | | | | | | | | | | | | | | | | | | | |
| † Working pressure should be considered in accordance with ISO 4413 to determine appropriate material type. | | | | | | | | | | | | | | | | | | | | | | | | | | | | | | | | | | | | | | | | |
| Product Type | | | | | | | | | | | | | | | | | | | | | | | | | | | | | | | | | | | | | | | | |
| FMB | Flange Mount Body | | | | | | | | | | | | | | | | | | | | | | | | | | | | | | | | | | | | | | | |
| Cavity Type | | | | | | | | | | | | | | | | | | | | | | | | | | | | | | | | | | | | | | | | |
| C | Industry Standard Common Cavity | | | | | | | | | | | | | | | | | | | | | | | | | | | | | | | | | | | | | | | |
| Cavity Size | | | | | | | | | | | | | | | | | | | | | | | | | | | | | | | | | | | | | | | | |
| 162 | Cavity C-16-2 | | | | | | | | | | | | | | | | | | | | | | | | | | | | | | | | | | | | | | | |
| Flange Size | | | | | | | | | | | | | | | | | | | | | | | | | | | | | | | | | | | | | | | | |
| 16F | ISO 6162 - DN25 Split Flange SAE Size 16 (1.00") Flange | | | | | | | | | | | | | | | | | | | | | | | | | | | | | | | | | | | | | | | |
| 20F | ISO 6162 - DN32 Split Flange SAE Size 20 (1.25") Flange | | | | | | | | | | | | | | | | | | | | | | | | | | | | | | | | | | | | | | | |
| 24F | ISO 6162 - DN38 Split Flange SAE Size 24 (1.50") Flange | | | | | | | | | | | | | | | | | | | | | | | | | | | | | | | | | | | | | | | |
| Flange Rating | | | | | | | | | | | | | | | | | | | | | | | | | | | | | | | | | | | | | | | | |
| 62 | ISO 6162 -40 MPa • SAE code 62 | | | | | | | | | | | | | | | | | | | | | | | | | | | | | | | | | | | | | | | |
| Port Threads | | | | | | | | | | | | | | | | | | | | | | | | | | | | | | | | | | | | | | | | |
| 16S | -16 SAE "T" Ports -6 SAE "GA" Port ISO 11926; SAE 1926 | | | | | | | | | | | | | | | | | | | | | | | | | | | | | | | | | | | | | | | |

Tapping Plate Mounting Hardware

| Part no. | Catalog pg. | Viton O-rings 75 durometer | Locating Pins | Plugs | Mounting Screws |
|---|--------------------------|-------------------------------------|--------------------------|---|---|
| * D03 TP PT 4P * D03 TP PT 4S * D03 TP PT 4B, M, T * D03 TP AB 4P * D03 TP AB 4S * D03 TP AB 4B, M, T * D03 TP L 4* | 142 | (4) -012 | (1) 0.12 dia x 0.25 long | (1) 0.25-18 NPTF LSPP (1) -4 SAE hex socket plug n/a (1) 0.25-18 NPTF LSPP (1) -4 SAE hex socket plug n/a n/a | n/a |
| * D03 TP SD * D03 TP OP * D03 TP BTV | 143 | (4) -012 | (1) 0.12 dia x 0.25 long | n/a (2) 0.06-27 NPTF LSPP n/a | n/a |
| * D03 TP 02 * AB | 144 | (8) -012 | (2) 0.12 dia x 0.25 long | n/a | n/a |
| * D05 TP PT 4P * D05 TP PT 4S * D05 TP PT 4B, M, T * D05 TP AB 4P * D05 TP AB 4S * D05 TP AB 4B, M, T * D05 TP L 4* | 145 | (5) -014 | n/a | (1) 0.25-18 NPTF LSPP (1) -4 SAE hex socket plug n/a (1) 0.25-18 NPTF LSPP (1) -4 SAE hex socket plug n/a n/a | n/a |
| * D05 TP SD * D05 TP BTV | 146 | (5) -014 | n/a | n/a | n/a |
| * D05 TP 02 * AB | 147 | (10) -014 | n/a | n/a | n/a |
| * D05H TP ** 4P * D05H TP ** 4S * D05H TP ** 4B, M, T | 148 | (2) -011, (5) -014 | n/a | (1) 0.25-18 NPTF LSPP (1) -4 SAE hex socket plug n/a | n/a |
| * D05HE TP ** 4P * D05HE TP ** 4S * D05HE TP ** 4B, M, T | 149 | (7) -014 | n/a | (1) 0.25-18 NPTF LSPP (1) -4 SAE hex socket plug n/a | n/a |
| * D05H TP XY 4P * D05H TP XY 4S * D05H TP XY 4B, M, T * D05H TP SD | 150 150 150 151 | (1) -011, (6) -014, and (1) -016 | n/a | (3) 0.25-18 NPTF LSPP (3) -4 SAE hex socket plug n/a n/a | n/a |
| * D05H TP 02 * AB * D05HE TP 02 * AB | 152 | (4) -011, (10) -014 (14) -014 | n/a | n/a | n/a |
| * D07 TP ** 4P * D07 TP ** 4S * D07 TP ** 4B, M, T | 153 | (2) -011, (4) -210 | (2) 0.12 dia x 0.25 long | (1) 0.25-18 NPTF LSPP (1) -4 SAE hex socket plug n/a | n/a |
| * D07 TP XY 4P * D07 TP XY 4S * D07 TP XY 4B, M, T * D07 TP SD | 154 154 154 155 | (2) -011, (4) -210 | (2) 0.12 dia x 0.25 long | (3) 0.25-18 NPTF LSPP (3) -4 SAE hex socket plug n/a n/a | n/a |
| * D05 D07 TP 02 4 AB | 156 | (4) -011, (8) -210 | (4) 0.12 dia x 0.25 long | n/a | (1) UNC 0.25-20 x 2.00 SHCS & (4) 0.38-16 x 2.00 long SHCS |
| * D08 TP ** 4P * D08 TP ** 4S * D08 TP ** 4B, M, T | 157 | (2) -210, (4) -215 | (2) 0.25 dia x 0.50 long | (1) 0.25-18 NPTF LSPP (1) -4 SAE hex socket plug n/a | n/a |
| * D08 TP XY 4P * D08 TP XY 4S * D08 TP XY 4B, M, T * D08 TP SD | 158 158 158 159 | (2) -210, (4) -215 | (2) 0.25 dia x 0.50 long | (3) 0.25-18 NPTF LSPP (3) -4 SAE hex socket plug n/a n/a | n/a |
| * D03 D08 TP 02 * AB * D05 D08 TP 02 * AB | 160 | (4) -210, (8) -215 | (4) 0.25 dia x 0.50 long | n/a | (6) UNC 0.50-13 x 2.00 SHCS |
| * D10 TP PTAB 4* | 161 | (3) -210, (4) -222 | (2) 0.25 dia x 0.50 long | n/a | n/a |