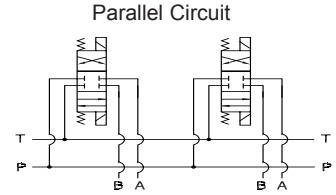
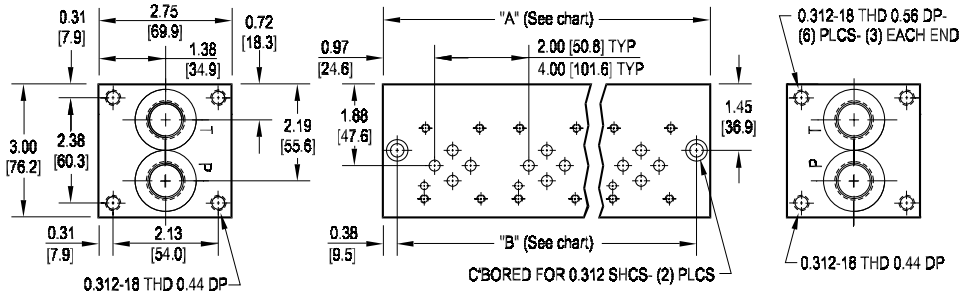
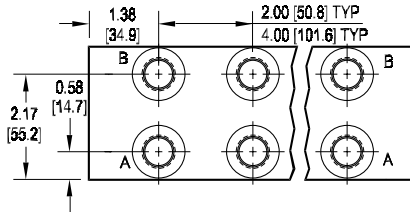


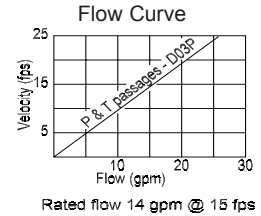
D03 LC Parallel Circuit Manifold



NOTE:
Mounting hardware is ordered separately.
 See page 60 for available bracket or screw mounting kits at no extra charge. Flange and gasket kits are also available for a nominal charge.



No. of stations	Code 2 (2.00") valve spacing						Code 4 (4.00") valve spacing			
	* 01	02	03	04	05	06	No. of stations	02	03	04
"A" length inch [mm]	2.75 [69.9]	4.75 [120.7]	6.75 [171.5]	8.75 [222.3]	10.75 [273.1]	12.75 [323.9]	"A" length inch [mm]	6.75 [171.5]	10.75 [273.1]	14.75 [374.7]
"B" dimension inch [mm]	2.00 [50.8]	4.00 [101.6]	6.00 [152.4]	8.00 [203.2]	10.00 [254.0]	12.00 [304.8]	"B" dimension inch [mm]	6.00 [152.4]	10.00 [254.0]	14.00 [355.6]
apx. weight alum lb [kg]	2.5 [1.2]	4 [2]	6 [3]	7.5 [4]	9 [4.5]	11 [5]	apx. weight alum lb [kg]	6 [3]	9 [4.5]	13 [6]
apx. weight iron lb [kg]	6 [3]	10.5 [5]	15 [7]	19 [9]	23 [11]	28 [13]	apx. weight iron lb [kg]	15 [8]	23 [12]	32 [15]



* "A" length of 01 station with relief cavity is 3.75 [95.3]. "B" dimension is 3.00 [76.2].

Specifications, descriptions, and dimensional data are subject to correction or change without notice or incurring obligation. Download latest catalog page revisions at www.daman.com.

Ordering Information

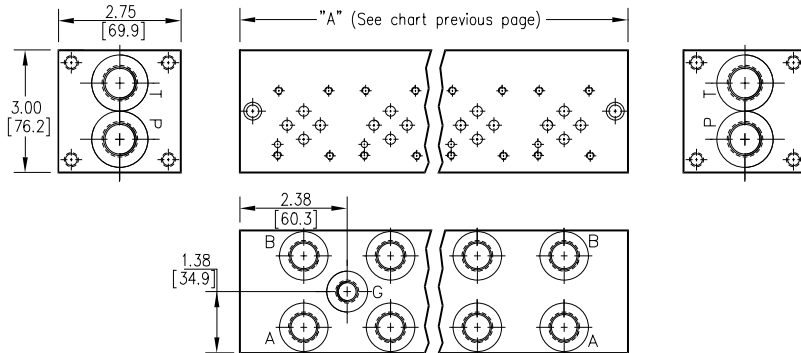
Product Line	Material	Valve Pattern	Circuit	No. of Stations	Valve Spacing	Port Threads	Options											
L Low Cost	Material A Aluminum - 6061-T6 3000† psi • 20.7 MPa D Ductile Iron - D4512 5000† psi • 34.5 MPa † Working pressure should be considered in accordance with ISO 4413 to determine appropriate material type.	D03 ISO 4401-03-02 NFPA T3.5.1-D03 See Tech Information	P Parallel Circuit Standard Flow	No. of Stations Aluminum 01...06 Available with spacing code 2 02...04 Available with spacing code 4 Ductile Iron 01...06 Available with spacing code 2 02...04 Available with spacing code 4	Valve Spacing 2 2.00 inch [50.8 mm] 4 4.00 inch [101.6 mm]	Port Threads <table border="1"> <thead> <tr> <th></th> <th>P & T</th> <th>A & B</th> </tr> </thead> <tbody> <tr> <td>P</td> <td>NPTF • ANSI B1.20.3</td> <td>0.50</td> <td>0.38</td> </tr> <tr> <td>S</td> <td>SAE • ISO 11926</td> <td>-10</td> <td>-8</td> </tr> </tbody> </table>		P & T	A & B	P	NPTF • ANSI B1.20.3	0.50	0.38	S	SAE • ISO 11926	-10	-8	Options See next page for available options and ordering codes.
								P & T	A & B									
P	NPTF • ANSI B1.20.3	0.50	0.38															
S	SAE • ISO 11926	-10	-8															

Options - D03 LC Parallel Manifold

Contact Daman or consult web CADalog for cavity locations if critical.

Valve cavity location when cavity, or cavity-isolation combination L or D is specified.

Valve cavity location for cavity-isolation combination R or D.



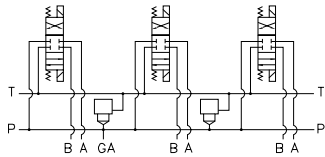
ISOLATIONS		
Daman isolation options allow a manifold to have two independent pressure and/or tank ports. Isolations are drilled rather than plugged to ensure a leakproof and failproof isolation.		
Ordering code letter:	* Isolation is between stations:	Available # of stations:
2.00 [50.8] spacing		
A	01 & 02	02-06
B	02 & 03	03-06
C	03 & 04	04-06
D	04 & 05	05-06
E	05 & 06	06
4.00 [101.6] spacing		
A	01 & 02	02-04
B	02 & 03	03-04
C	03 & 04	04

* Stations are numbered left to right.

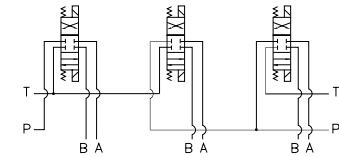
Parallel Circuit with Cavity and Gauge Port

Parallel Circuit with Isolations

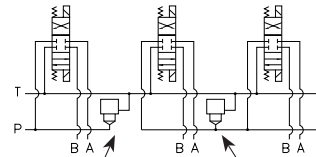
Cavity & Isolation Combinations



Valves with P in the nose and T out the side must be used.



Manifold shown with P isolation between 1 & 2 (PA), and T isolation between 2 & 3 (TB).



Option code L Cavity left of isolation
Option code R Cavity right of isolation
Option code D includes both cavities

NOTES:

- 1) The GA port is not available on a (1) station manifold.
- 2) The GA port is not available when a pressure isolation is specified.
- 3) Some cavity and isolation combinations are not possible. Consult factory to determine availability.

Ordering Information



Gauge Port	
Omit if gauge port not required.	
G	Gauge Port for system pressure
If Port Thread code is: P, then Gauge port = 0.25 NPTF S, then Gauge port = -4 SAE	

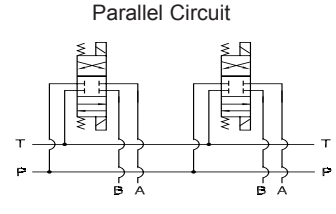
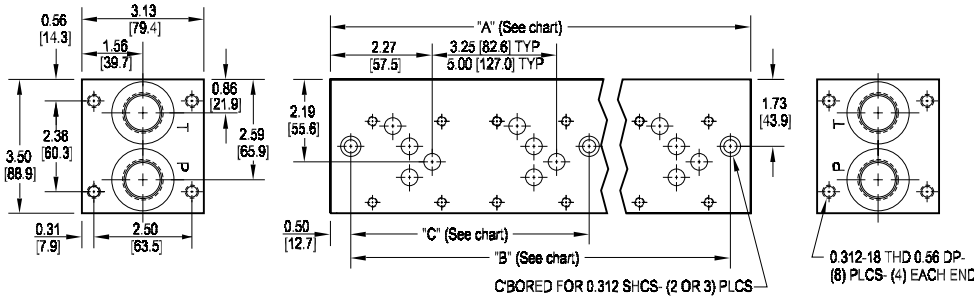
Cavity	
Omit if cavity not required.	
C	Common cavity: No solenoid clearance C-10-2 (P in nose)
S	Sun Cavity: T-10A (P in nose) See Tech Info for valves.

Tank Isolation	
Omit if T isolation not required.	
TA...TE	Available with spacing code 2
TA...TC	Available with spacing code 4

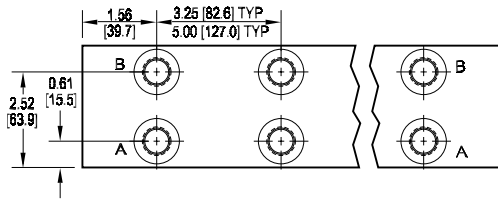
Pressure Isolation	
Omit if P isolation not required. Not available with G option.	
PA...PE	Available with spacing code 2
PA...PC	Available with spacing code 4

Relief / Isolation Combinations	
Specify when using a combination of cavity and isolation options. Cavities do not have solenoid clearance.	
L	Relief cavity is located left of the isolation.
R	Relief cavity is located right of the isolation.
D	Two relief cavities, one each side of isolation.

D05 LC Parallel Circuit Manifold

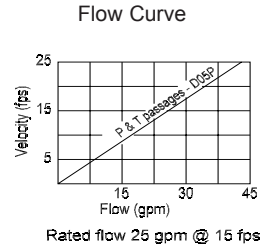


NOTE:
Mounting hardware is ordered separately.
 See page 60 for available bracket or screw mounting kits at no extra charge. Flange and gasket kits are also available for a nominal charge.



Code 3 (3.25") valve spacing						Code 5 (5.00") valve spacing				
No. of stations	* 01	02	03	04	05	06	No. of stations	02	03	04
"A" length inch [mm]	3.25 [82.6]	6.50 [165.1]	9.75 [247.7]	13.00 [330.2]	16.25 [412.8]	19.50 [495.3]	"A" length inch [mm]	8.25 [209.6]	13.25 [336.6]	18.25 [463.6]
"B" dimension inch [mm]	2.25 [57.2]	5.50 [139.7]	8.75 [222.3]	12.00 [304.8]	15.25 [387.4]	18.50 [469.9]	"B" dimension inch [mm]	7.25 [184.2]	12.25 [311.2]	17.25 [438.2]
"C" dimension inch [mm]	--	--	--	--	6.00 [152.4]	9.25 [235.0]	"C" dimension inch [mm]	--	--	8.63 [219.1]
apx. weight alum lb [kg]	4 [2]	7.5 [3]	11 [5]	14.5 [7]	18 [8]	21.5 [10]	apx. weight alum lb [kg]	9 [4]	15 [7]	20 [9]
apx. weight iron lb [kg]	9.5 [4.5]	19 [8.5]	28 [13]	37 [17]	46.5 [21]	56 [25.5]	apx. weight iron lb [kg]	24 [11]	38 [17]	52 [24]

* "A" length of 01 station with relief cavity is 4.50 [114.3]. "B" dimension is 3.50 [88.9].



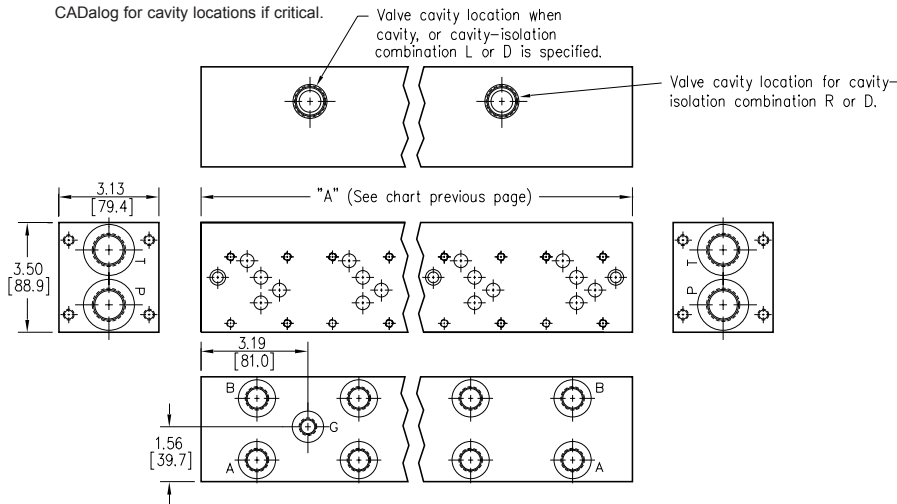
Specifications, descriptions, and dimensional data are subject to correction or change without notice or incurring obligation. Download latest catalog page revisions at www.daman.com.

Ordering Information

Product Line	Material	Valve Pattern	Circuit	No. of Stations	Valve Spacing	Port Threads	Options																																												
L Low Cost	<table border="1"> <tr><th colspan="2">Material</th></tr> <tr><td>A</td><td>Aluminum - 6061-T6 3000† psi • 20.7 MPa</td></tr> <tr><td>D</td><td>Ductile Iron - D4512 5000† psi • 34.5 MPa</td></tr> <tr><td colspan="2">† Working pressure should be considered in accordance with ISO 4413 to determine appropriate material type.</td></tr> </table>	Material		A	Aluminum - 6061-T6 3000† psi • 20.7 MPa	D	Ductile Iron - D4512 5000† psi • 34.5 MPa	† Working pressure should be considered in accordance with ISO 4413 to determine appropriate material type.		D05 ISO 4401-05-04 NFFPA T3.5.1-D05 See Tech Information	P Parallel Circuit Standard Flow	<table border="1"> <tr><th colspan="2">No. of Stations</th></tr> <tr><th colspan="2">Aluminum</th></tr> <tr><td>01...06</td><td>Available with spacing code 3</td></tr> <tr><td>02...04</td><td>Available with spacing code 5</td></tr> <tr><th colspan="2">Ductile Iron</th></tr> <tr><td>01...06</td><td>Available with spacing code 3</td></tr> <tr><td>02...04</td><td>Available with spacing code 5</td></tr> </table>	No. of Stations		Aluminum		01...06	Available with spacing code 3	02...04	Available with spacing code 5	Ductile Iron		01...06	Available with spacing code 3	02...04	Available with spacing code 5	<table border="1"> <tr><th colspan="2">Valve Spacing</th></tr> <tr><td>3</td><td>3.25 inch [82.6 mm]</td></tr> <tr><td>5</td><td>5.00 inch [127.0 mm]</td></tr> </table>	Valve Spacing		3	3.25 inch [82.6 mm]	5	5.00 inch [127.0 mm]	<table border="1"> <tr><th colspan="3">Port Threads</th></tr> <tr><th></th><th>P & T</th><th>A & B</th></tr> <tr><td>P</td><td>NPTF • ANSI B1.20.3</td><td>0.75 0.50</td></tr> <tr><td>S</td><td>SAE • ISO 11926</td><td>-12 -8</td></tr> </table>	Port Threads				P & T	A & B	P	NPTF • ANSI B1.20.3	0.75 0.50	S	SAE • ISO 11926	-12 -8	<table border="1"> <tr><th colspan="2">Options</th></tr> <tr><td colspan="2">See next page for available options and ordering codes.</td></tr> </table>	Options		See next page for available options and ordering codes.	
Material																																																			
A	Aluminum - 6061-T6 3000† psi • 20.7 MPa																																																		
D	Ductile Iron - D4512 5000† psi • 34.5 MPa																																																		
† Working pressure should be considered in accordance with ISO 4413 to determine appropriate material type.																																																			
No. of Stations																																																			
Aluminum																																																			
01...06	Available with spacing code 3																																																		
02...04	Available with spacing code 5																																																		
Ductile Iron																																																			
01...06	Available with spacing code 3																																																		
02...04	Available with spacing code 5																																																		
Valve Spacing																																																			
3	3.25 inch [82.6 mm]																																																		
5	5.00 inch [127.0 mm]																																																		
Port Threads																																																			
	P & T	A & B																																																	
P	NPTF • ANSI B1.20.3	0.75 0.50																																																	
S	SAE • ISO 11926	-12 -8																																																	
Options																																																			
See next page for available options and ordering codes.																																																			

Options - D05 LC Parallel Manifold

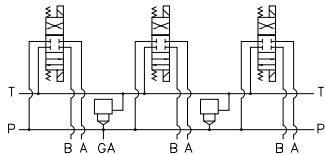
Contact Daman or consult web CADalog for cavity locations if critical.



ISOLATIONS		
Daman isolation options allow a manifold to have two independent pressure and/or tank ports. Isolations are drilled rather than plugged to ensure a leakproof and failproof isolation.		
Ordering code letter:	* Isolation is between stations:	Available # of stations:
3.25 [82.6] spacing		
A	01 & 02	02-06
B	02 & 03	03-06
C	03 & 04	04-06
D	04 & 05	05-06
E	05 & 06	06
5.00 [127.0] spacing		
A	01 & 02	02-04
B	02 & 03	03-04
C	03 & 04	04

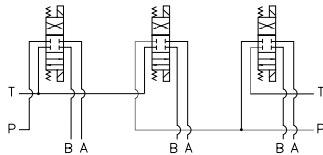
* Stations are numbered left to right.

Parallel Circuit with Cavity and Gauge Port



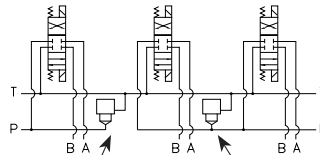
Valves with P in the nose and T out the side must be used.

Parallel Circuit with Isolations



Manifold shown with P isolation between 1 & 2 (PA), and T isolation between 2 & 3 (TB).

Cavity & Isolation Combinations

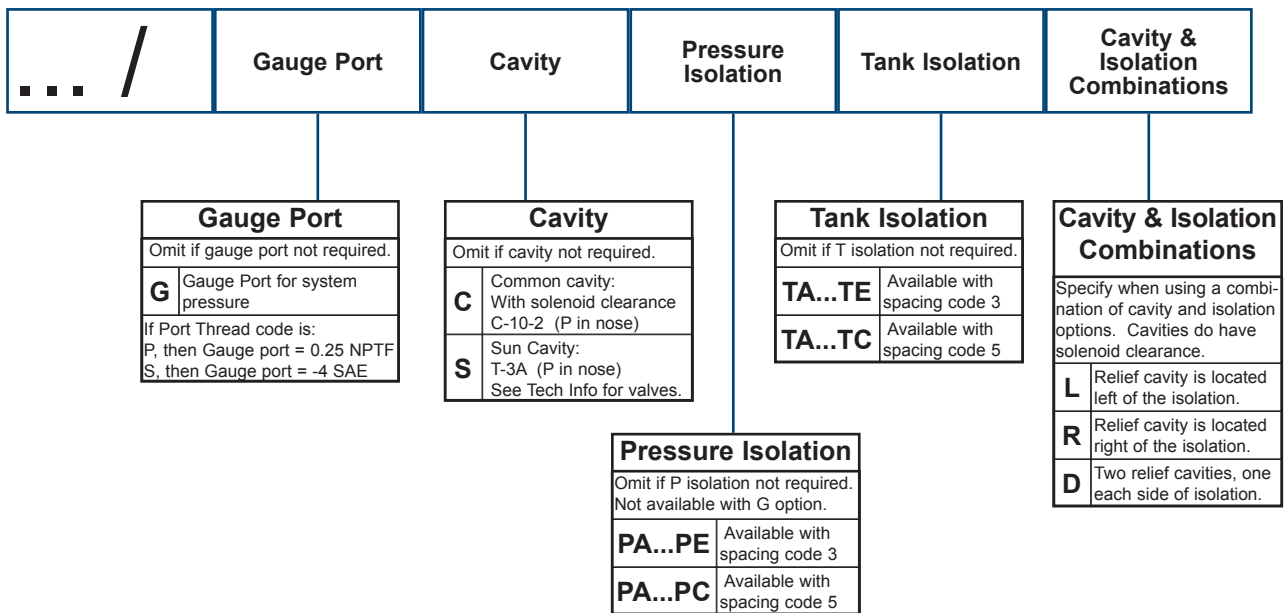


Option code L Cavity left of isolation
Option code R Cavity right of isolation
Option code D includes both cavities

NOTES:

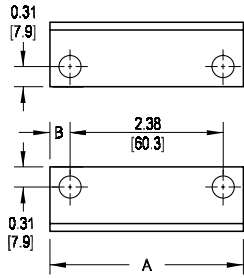
- 1) The GA port is not available on a (1) station manifold.
- 2) The GA port is not available when a pressure isolation is specified.
- 3) Some cavity and isolation combinations are not possible. Consult factory to determine availability.

Ordering Information

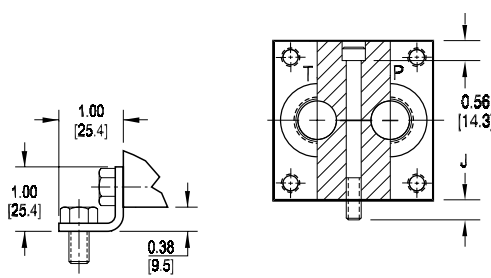


Mounting Kits for LC Manifolds

Mounting Bracket

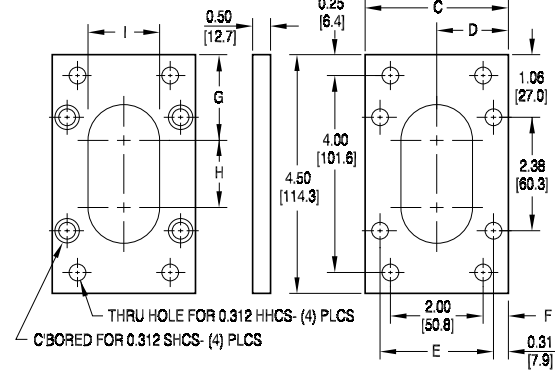


Mounting Screw

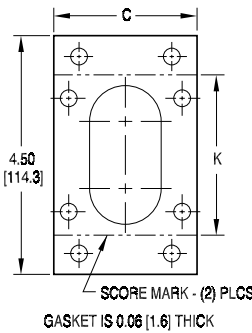


Dim	A	B	C	D	E	F	G	H	I	J	K
D03	3.00 [76.2]	0.31 [7.9]	2.75 [69.9]	1.38 [34.9]	2.13 [54.0]	0.38 [9.5]	1.47 [37.3]	1.47 [37.3]	1.33 [33.7]	0.56 [14.3]	3.25 [82.6]
D05	3.50 [88.9]	0.56 [14.3]	3.13 [79.4]	1.56 [39.7]	2.50 [63.5]	0.56 [14.3]	1.36 [34.6]	1.73 [44.0]	1.61 [41.0]	0.69 [17.5]	3.53 [89.7]

Mounting Flange



Gasket

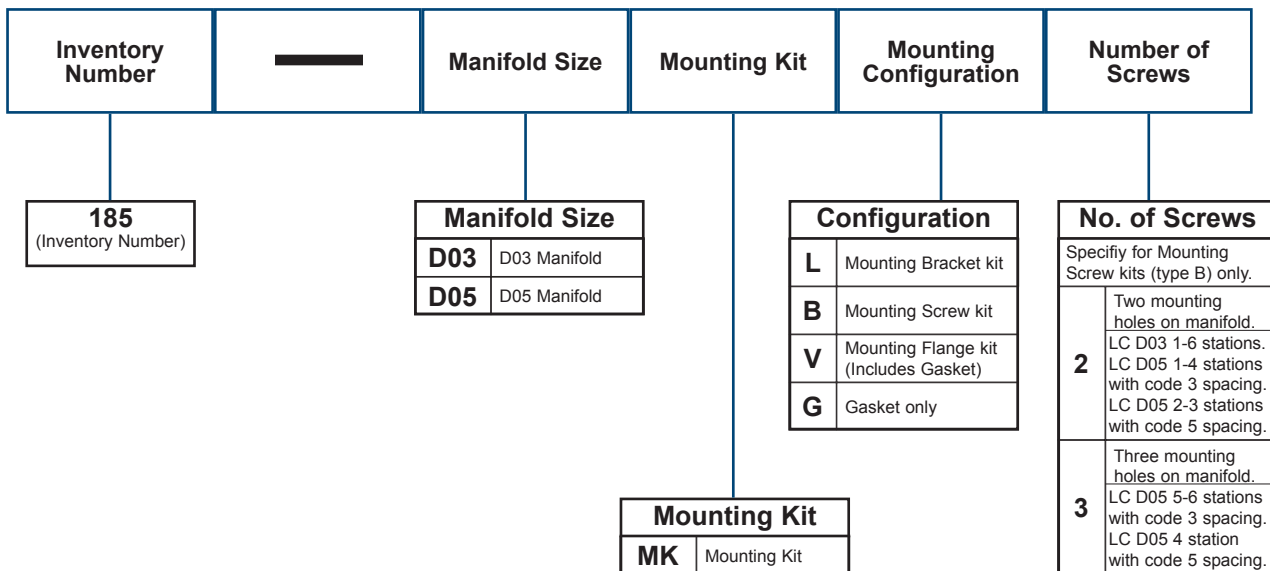


Bill of Materials

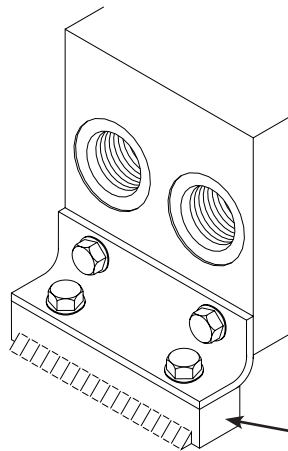
Mounting Bracket and Mounting Flange Kits	185-D03MKL	185-D03MKV	185-D05MKL	185-D05MKV
(2) zinc coated steel brackets	●	●	●	●
(1) zinc coated steel end mounting plate		●		●
(8) 0.312-18 x 0.63 long hex washer head cap screws	●	●	●	●
(1) 0.312-18 x 0.50 long socket head cap screw		●		
(3) 0.312-18 x 0.63 long socket head cap screws		●		
(4) 0.312-18 x 0.75 long socket head cap screws				●
(4) 0.312-18 x 1.00 long hex head cap screws		●		●
(4) 0.312 high collar lock washers		●		●
(1) Tank top gasket		●		●
Mounting Screw Kits	185-D03MKB2	185-D05MKB2	185-D05MKB3	
(2) 0.312-18 x 2.75 long socket head cap screws	●			
(2) 0.312-18 x 3.25 long socket head cap screws		●		
(3) 0.312-18 x 3.25 long socket head cap screws			●	

Specifications, descriptions, and dimensional data are subject to correction or change without notice or incurring obligation. Download latest catalog page revisions at www.daman.com.

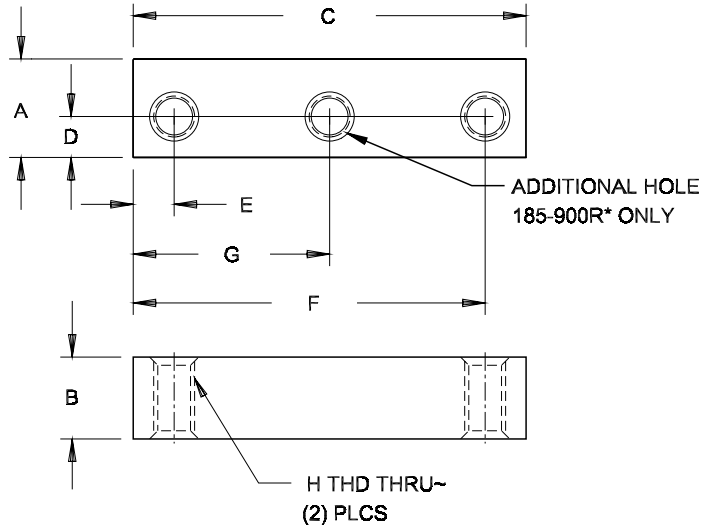
Ordering Information



Mounting Bracket Riser Blocks



Riser block
Material mild steel
Weldable • uncoated



Part No.	A	B	C	D	E	F	G	H THD
185-250RU	0.63	0.50	2.50	0.25	0.25	2.25		0.250-20 UNC-2B
185-250RM	[16.0]	[12.7]	[63.5]	[6.4]	[6.4]	[57.2]	--	M6 x 1 ISO 6H
185-300RU	0.75	0.63	3.00	0.31	0.31	2.69		0.312-18 UNC-2B
185-300RM	[19.1]	[16.0]	[76.2]	[7.9]	[7.9]	[68.3]	--	M8 x 1.25 ISO 6H
185-350RU	0.75	0.63	3.50	0.31	0.56	2.94		0.312-18 UNC-2B
185-350RM	[19.1]	[16.0]	[88.9]	[7.9]	[14.2]	[74.6]	--	M8 x 1.25 ISO 6H
185-400RU	0.75	0.63	4.00	0.31	0.31	3.69		0.312-18 UNC-2B
185-400RM	[19.1]	[16.0]	[101.6]	[7.9]	[7.9]	[93.7]	--	M8 x 1.25 ISO 6H
185-500RU	1.00	0.75	5.00	0.44	0.44	4.56		0.375-16 UNC-2B
185-500RM	[25.4]	[19.1]	[127.0]	[11.2]	[11.2]	[115.9]	--	M10 x 1.5 ISO 6H

Part No.	A	B	C	D	E	F	G	H THD
185-600RU	1.25	1.00	6.00	0.56	0.56	5.44		0.500-13 UNC-2B
185-600RM	[31.8]	[25.4]	[152.4]	[14.2]	[14.2]	[138.1]	--	M12 x 1.75 ISO 6H
185-700RU	1.25	1.00	7.00	0.56	0.69	6.31		0.500-13 UNC-2B
185-700RM	[31.8]	[25.4]	[177.8]	[14.2]	[17.5]	[160.3]	--	M12 x 1.75 ISO 6H
185-800RU	1.25	1.00	8.00	0.56	1.19	6.81		0.500-13 UNC-2B
185-800RM	[31.8]	[25.4]	[203.2]	[14.2]	[30.2]	[173.0]	--	M12 x 1.75 ISO 6H
185-900RU	1.25	1.00	9.00	0.56	0.69	8.31	4.50	0.500-13 UNC-2B
185-900RM	[31.8]	[25.4]	[228.6]	[14.2]	[17.5]	[211.1]	[114.3]	M12 x 1.75 ISO 6H

Specifications, descriptions, and dimensional data are subject to correction or change without notice or incurring obligation. Download latest catalog page revisions at www.daman.com.

Ordering Information

