

**Features:**

**CAMCO Modular Table Top Precision Link Conveyors** are ideal for linear transfer applications with features including:

- Modular frame design in fixed increment lengths facilitates quick assembly and delivery.
- Table-Top or Base mounted
- Available in carousel or over-under style
- Precision positioning of parts for assembly or manufacturing processes
- High-speed station-to-station parts transfer
- Precision links with roller bearing cam followers for smooth transfer and long life.
- Link sizes (3-inch, 4.5-inch, 6-inch) to meet most application requirements
- Open frame design for pass-through of belting, linkages, electric and air supply components.
- Optional bases, line shafts & tooling plates
- Complete with motorized index drive system including overload protection.

**Table of Contents**

3.0 Inch .....162

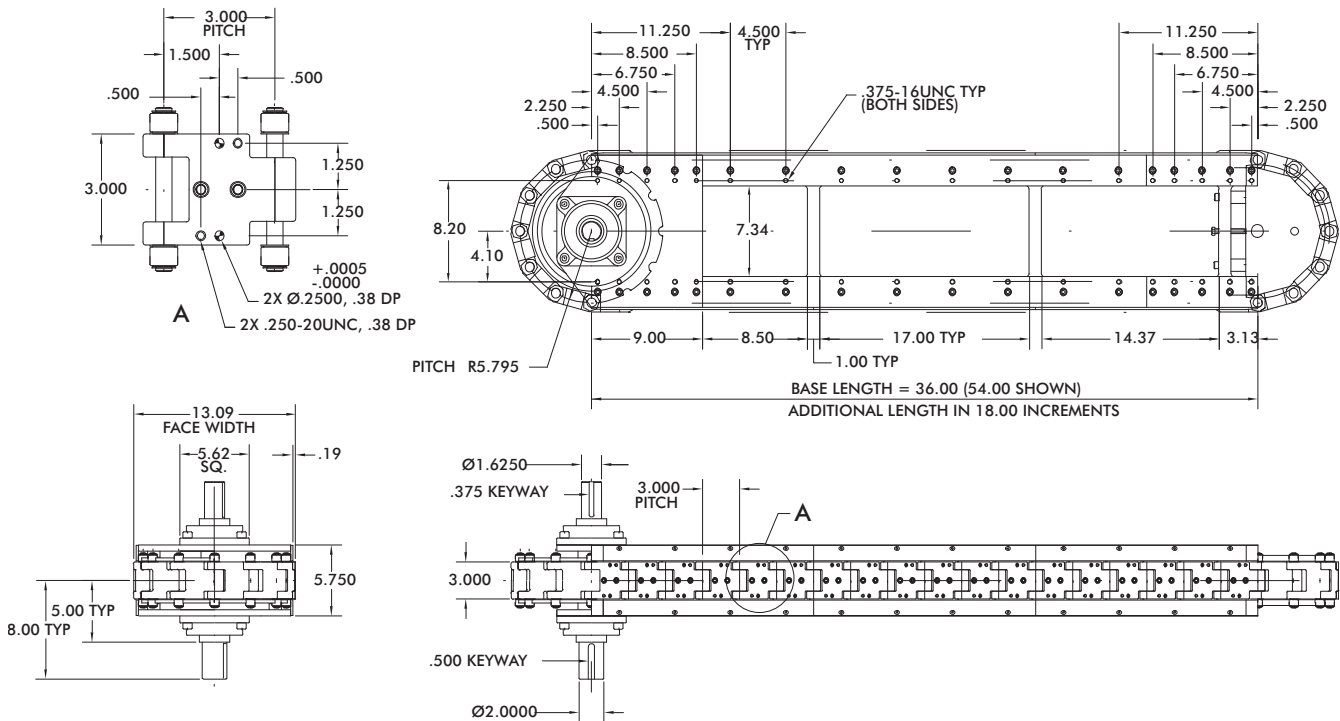
4.5 Inch .....164

6.0 Inch .....166

Conveyor Options .....168

Dimensions and technical information are subject to change without notice.

### 3.0 Inch Series Modular Conveyor (module only)



### 3.0 Inch Series Modular Conveyor (drive package)

#### Standard Drive Package

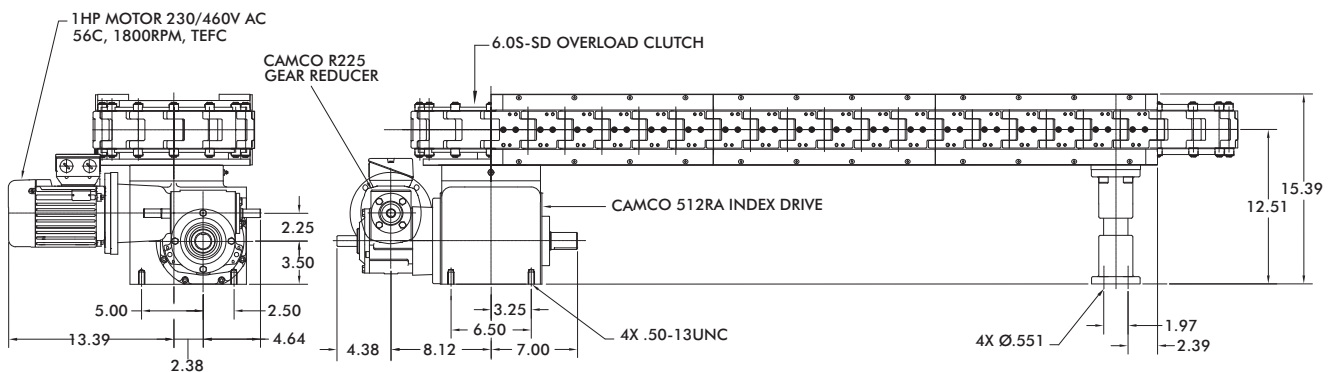
- 512RA Index Drive
- R225 Gear Reducer
- 6.0FC-SD Overload Clutch (Shaft Drive)
- 6.0S-SD Overload Clutch (Direct Drive)
- 1 hp high-cycling, performance AC Motor
- IM-pAC Motor Control

#### Heavy-Duty Drive Package

- 662RA Index Drive
- 7300C Gear Reducer
- 11FC-SD Overload Clutch (Shaft Drive)
- 6.0-SD Overload Clutch (Direct Drive)
- 1 hp high-cycling, performance AC Motor
- IM-pAC Motor Control

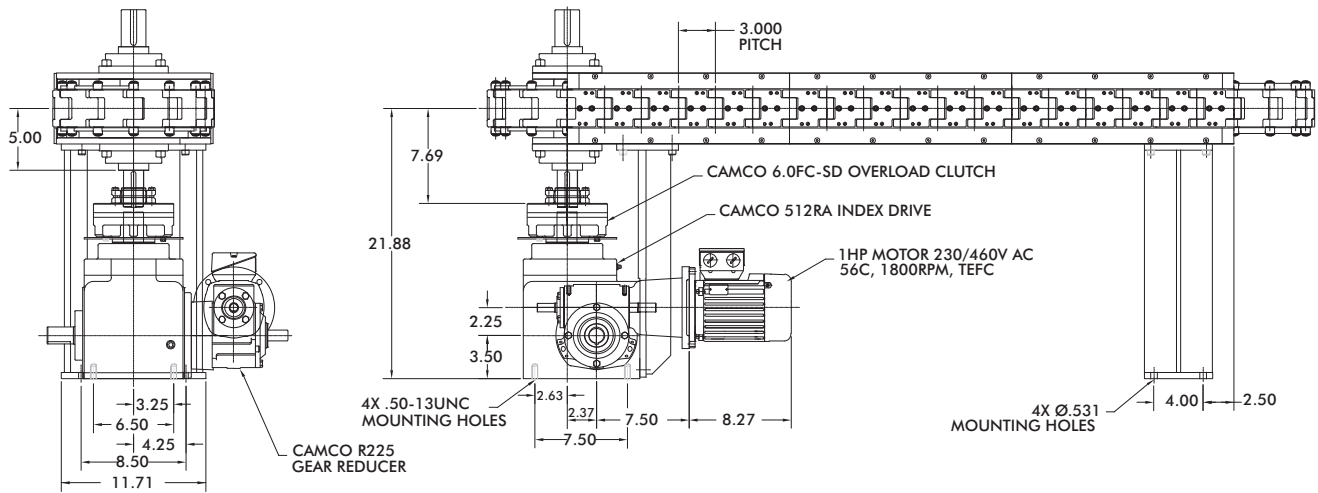
Index Distance [in.]	Indexer Stops
3.00	12
6.00	6
9.00	4
12.00	3

### 3.0 Inch Series Direct Drive Carousel

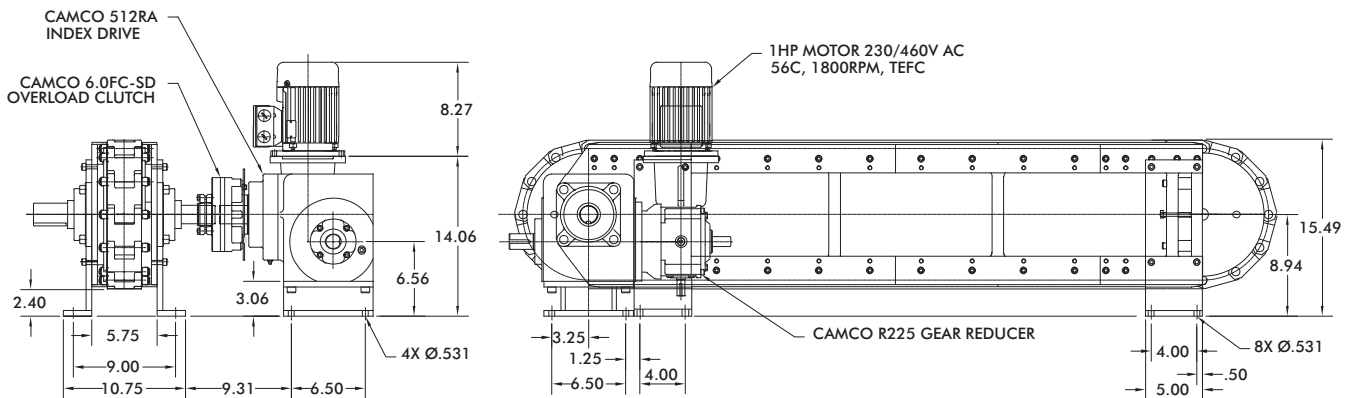


Dimensions and technical information are subject to change without notice.

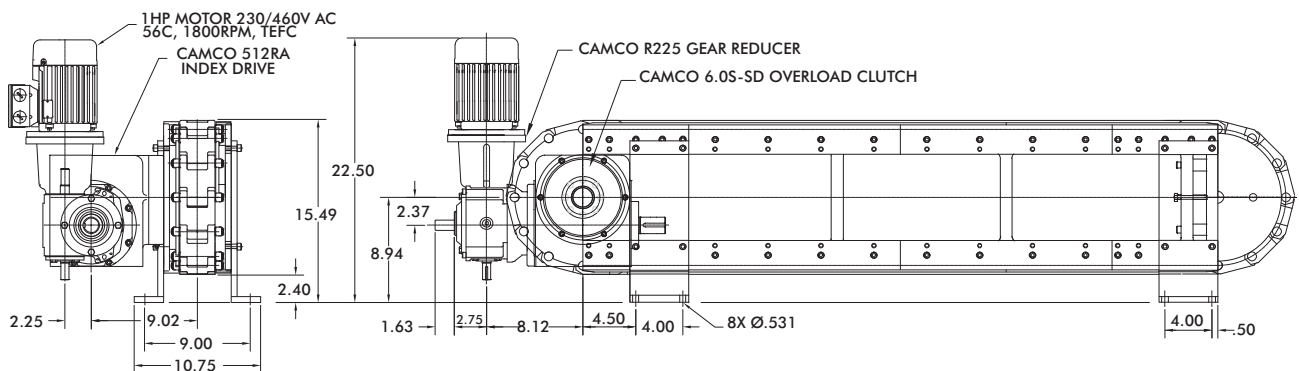
3.0 Inch Series Shaft Drive Carousel



3.0 Inch Series Shaft Drive Over/Under

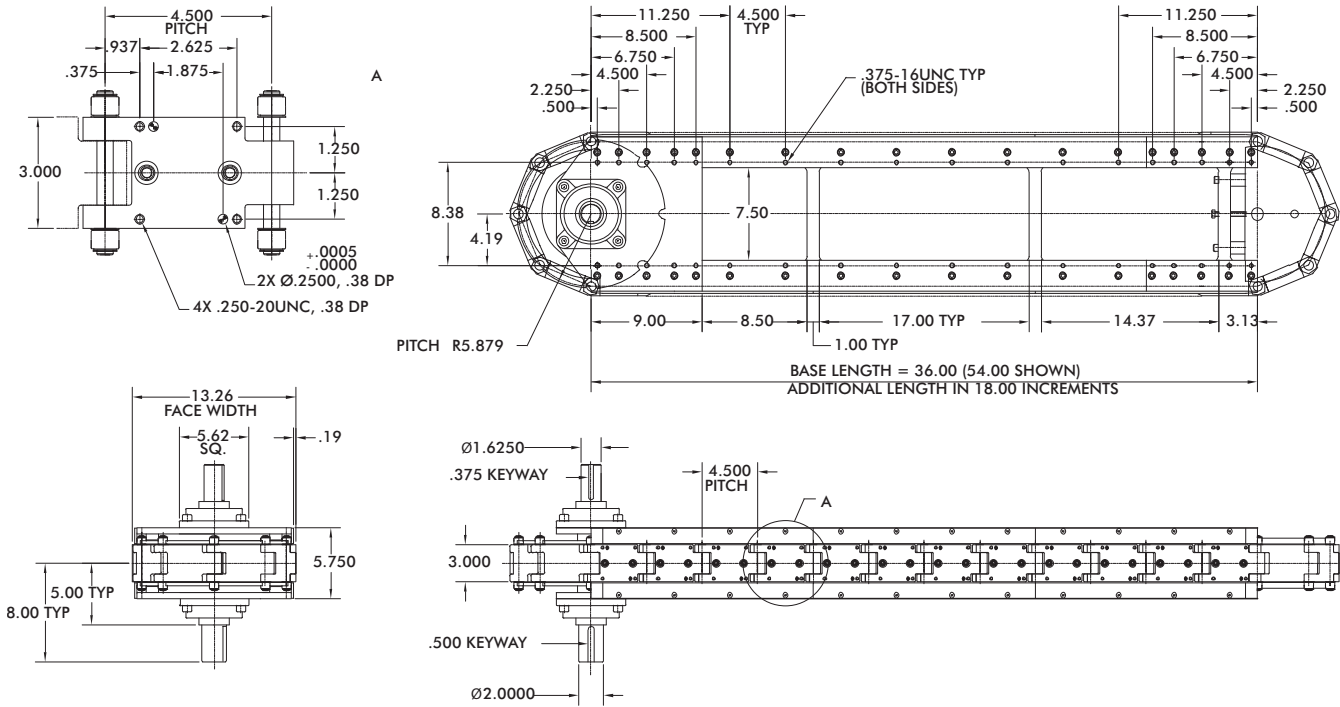


3.0 Inch Series Direct Drive Over/Under



Dimensions and technical information are subject to change without notice.

### 4.5 Inch Series Modular Conveyor (module only)



### 4.5 Inch Series Modular Conveyor (drive package)

#### Standard Drive Package

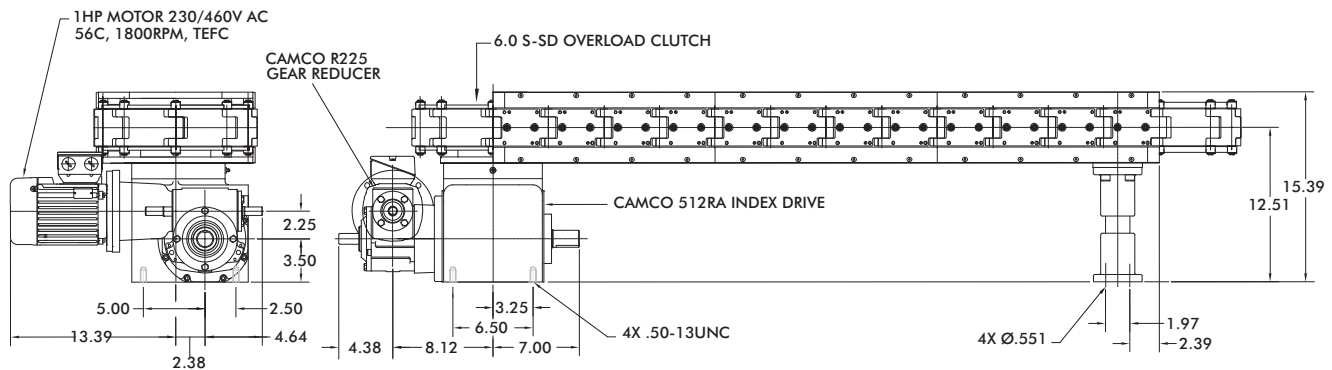
- 512RA Index Drive
- R225 Gear Reducer
- 6.0FC-SD Overload Clutch (Shaft Drive)
- 6.0S-SD Overload Clutch (Direct Drive)
- 1 hp high-cycling, performance AC Motor
- IM-pAC Motor Control

#### Heavy-Duty Drive Package

- 662RA Index Drive
- 7300C Gear Reducer
- 11FC-SD Overload Clutch (Shaft Drive)
- 6.0-SD Overload Clutch (Direct Drive)
- 1 hp high-cycling, performance AC Motor
- IM-pAC Motor Control

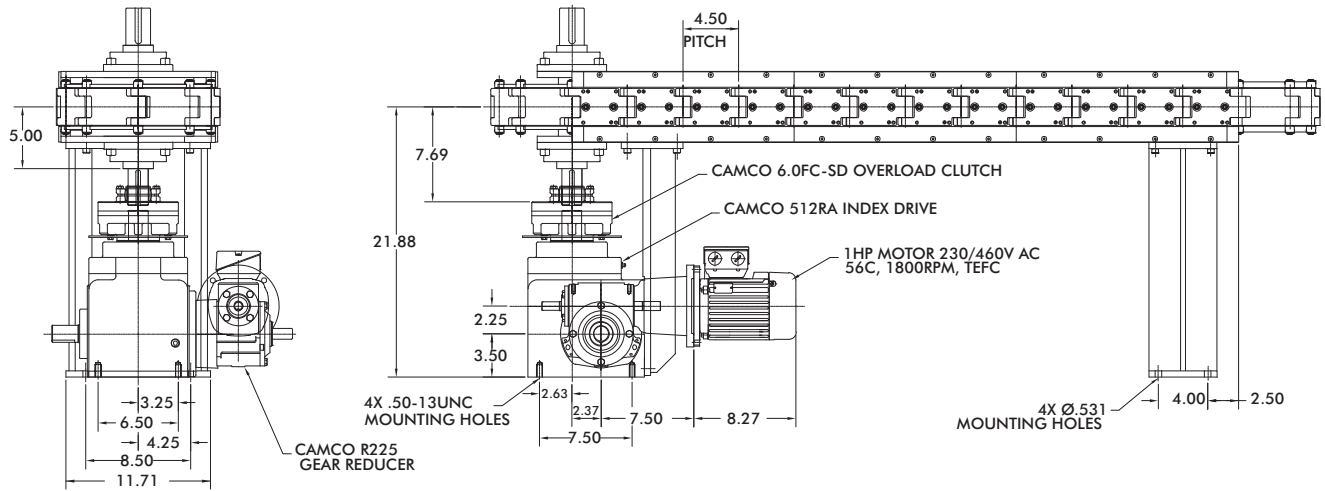
Index Distance [in.]	Indexer Stops
4.50	8
9.00	4
18.00	2

### 4.5 Inch Series Direct Drive Carousel

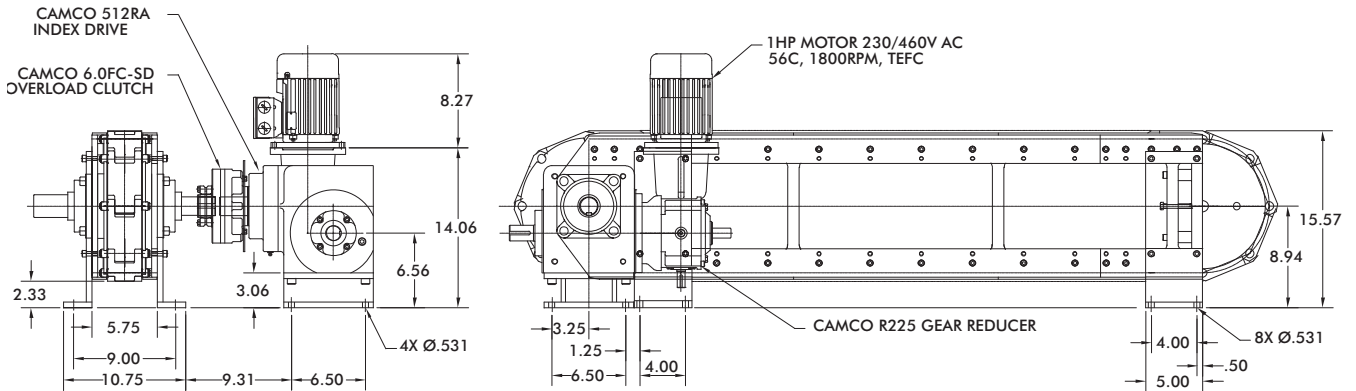


Dimensions and technical information are subject to change without notice.

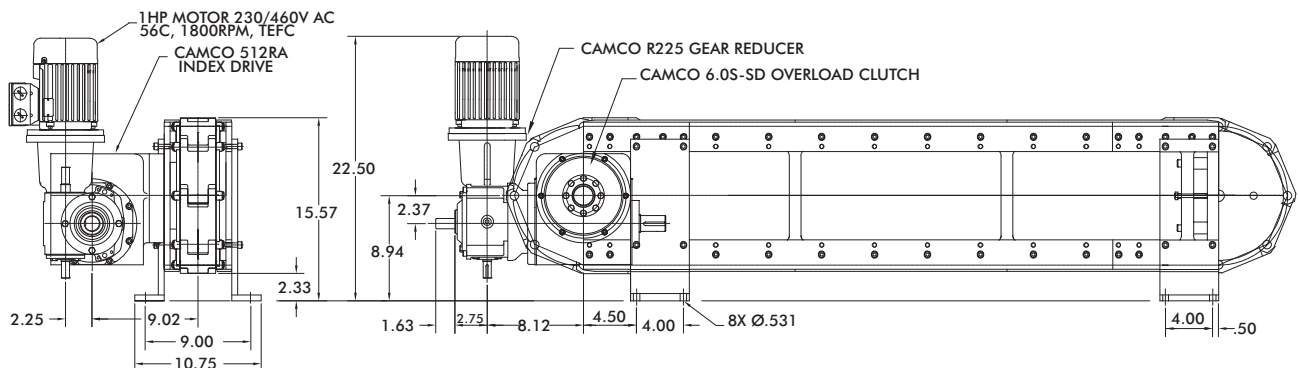
4.5 Inch Series Shaft Drive Carousel



4.5 Inch Series Shaft Drive Over/Under

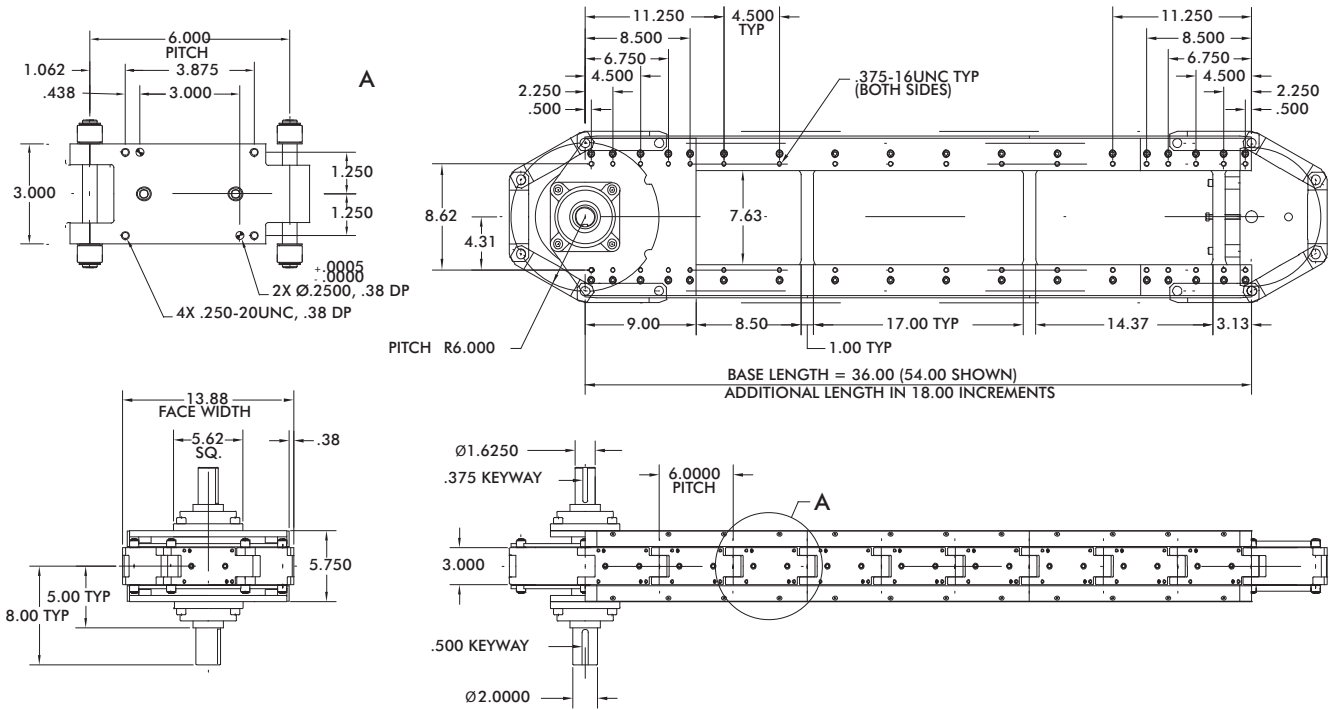


4.5 Inch Series Direct Drive Over/Under



Dimensions and technical information are subject to change without notice.

6.0 Inch Series Modular Conveyor (module only)



6.0 Inch Series Modular Conveyor (drive package)

Standard Drive Package

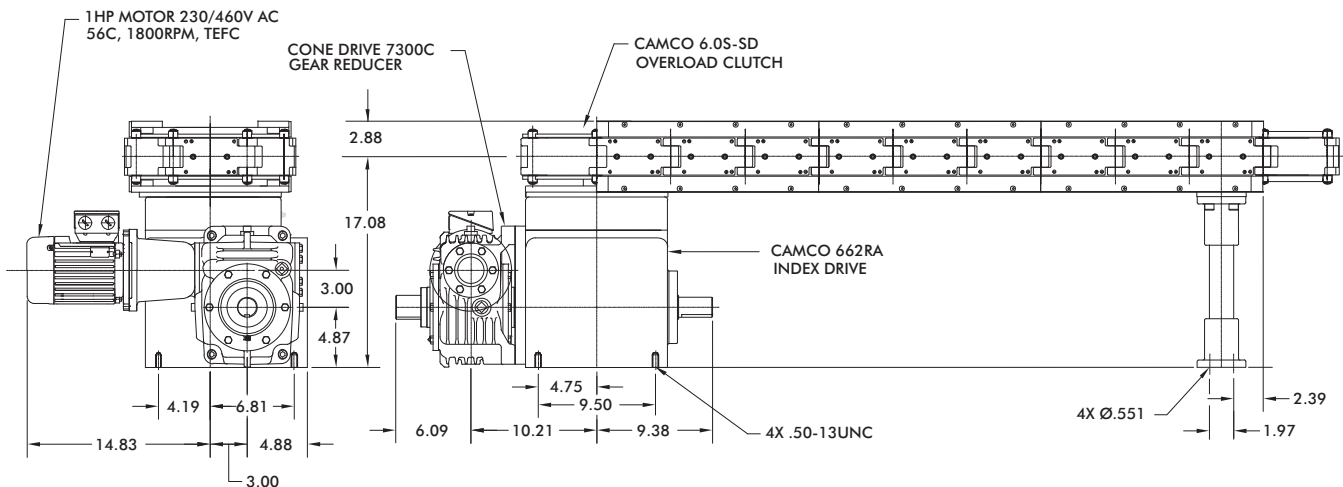
- 662RA Index Drive
- 7300C Gear Reducer
- 11FC-SD Overload Clutch (Shaft Drive)
- 6.0S-SD Overload Clutch (Direct Drive)
- 1 hp high-cycling, performance AC Motor
- IM-pAC Motor Control

Heavy-Duty Drive Package

- 800RD Index Drive
- 7300C Gear Reducer
- 25FC-SD Overload Clutch
- 1 hp high-cycling, performance AC Motor
- IM-pAC Motor Control

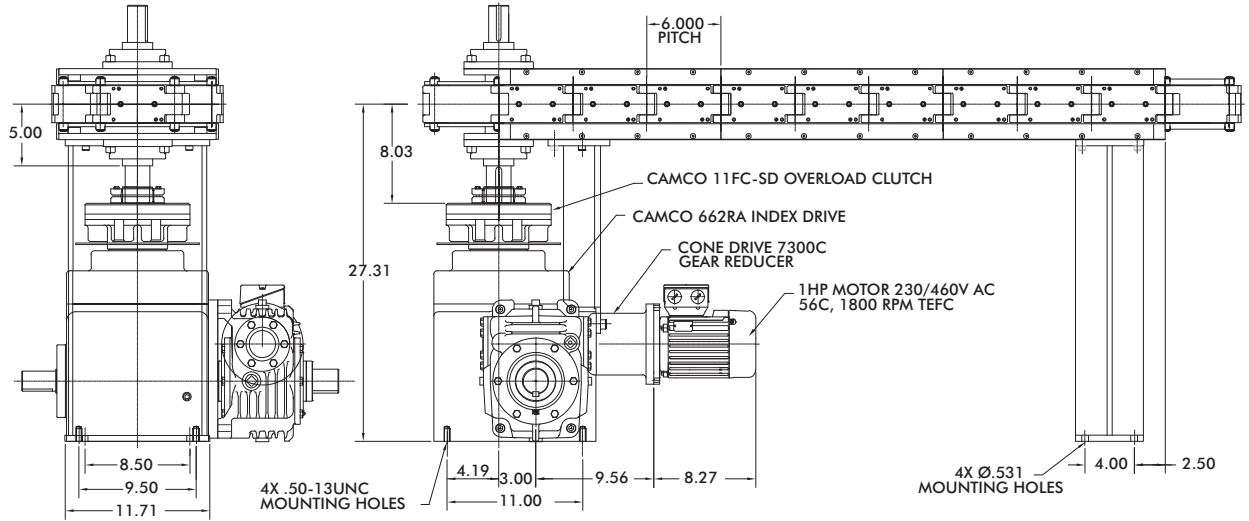
Index Distance [in.]	Indexer Stops
6.00	6
12.00	3
18.00	2

6.0 Inch Series Direct Drive Carousel

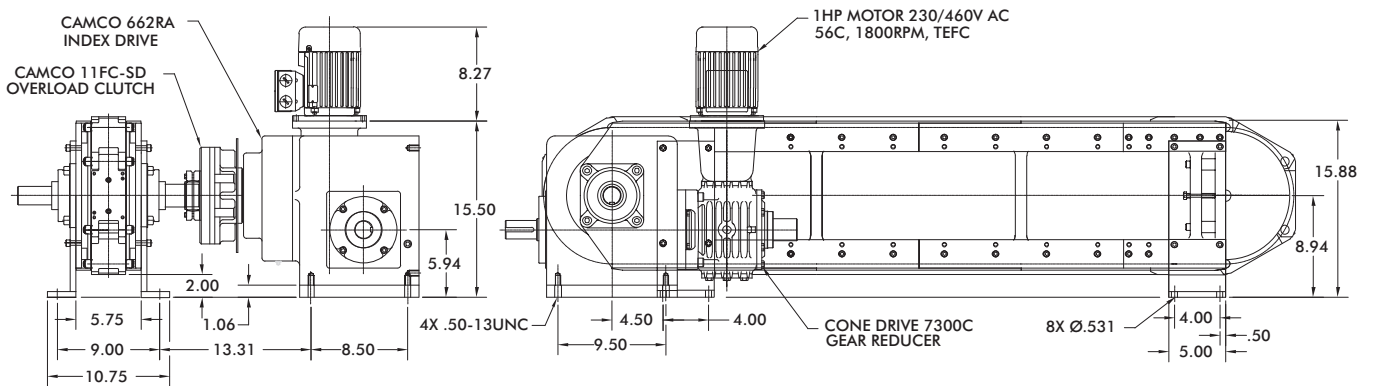


Dimensions and technical information are subject to change without notice.

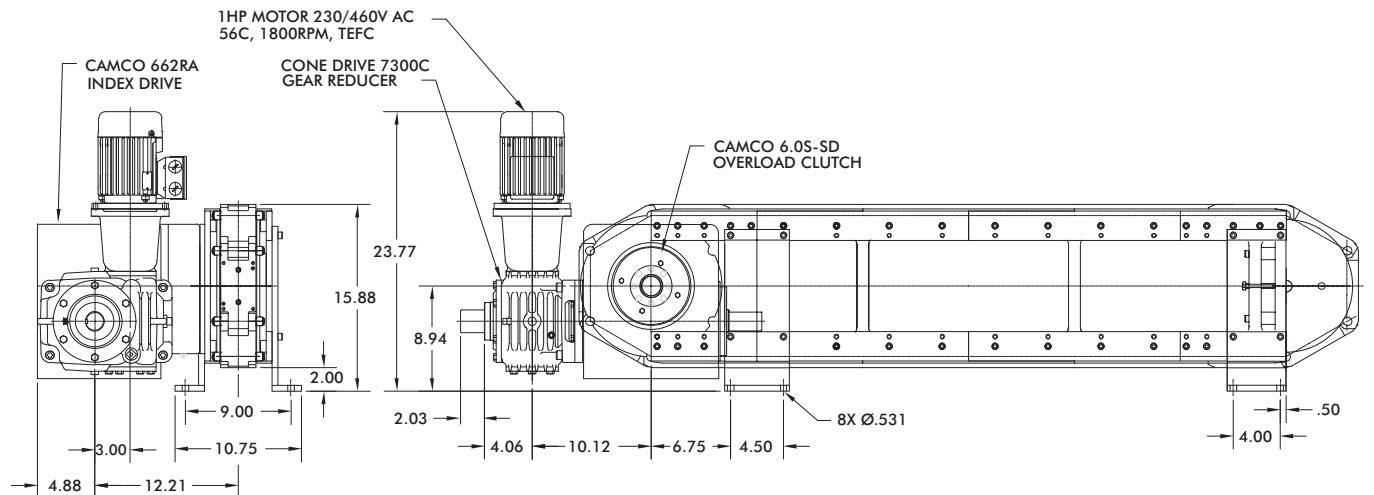
6.0 Inch Series Shaft Drive Carousel



6.0 Inch Series Shaft Drive Over/Under

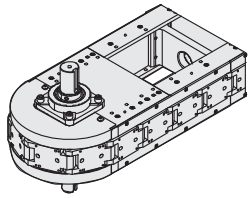


6.0 Inch Series Direct Drive Over/Under

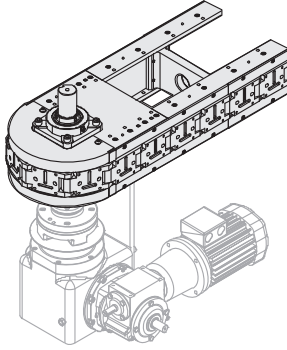


Dimensions and technical information are subject to change without notice.

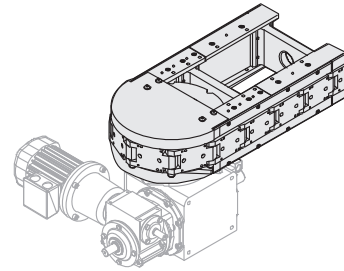
Conveyor Type



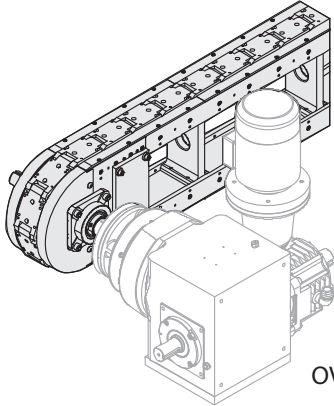
MODULE ONLY



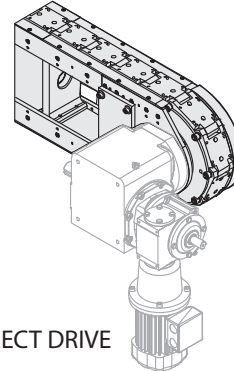
CAROUSEL-SHAFT DRIVEN



CAROUSEL-DIRECT DRIVEN

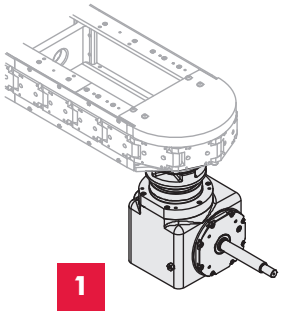


OVER-UNDER SHAFT DRIVEN

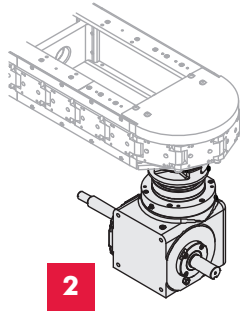


OVER-UNDER DIRECT DRIVE

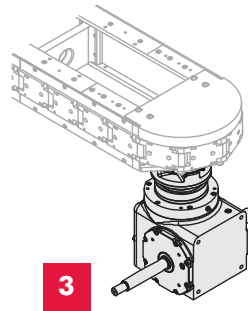
Carousel Indexer Position



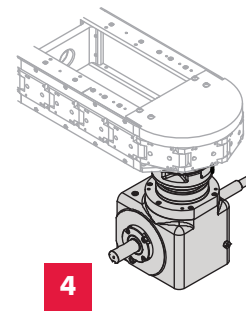
1



2



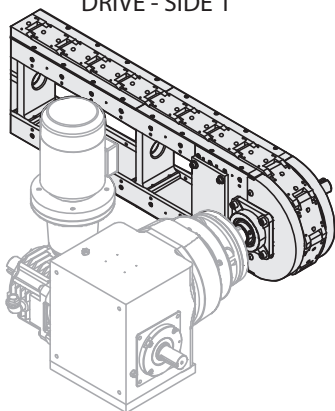
3



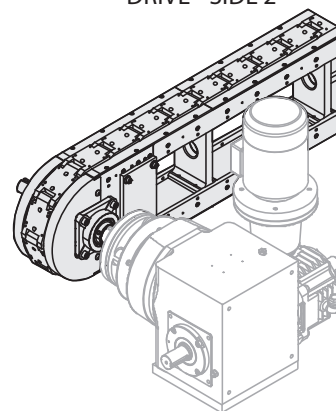
4

Over/Under Side

DRIVE - SIDE 1



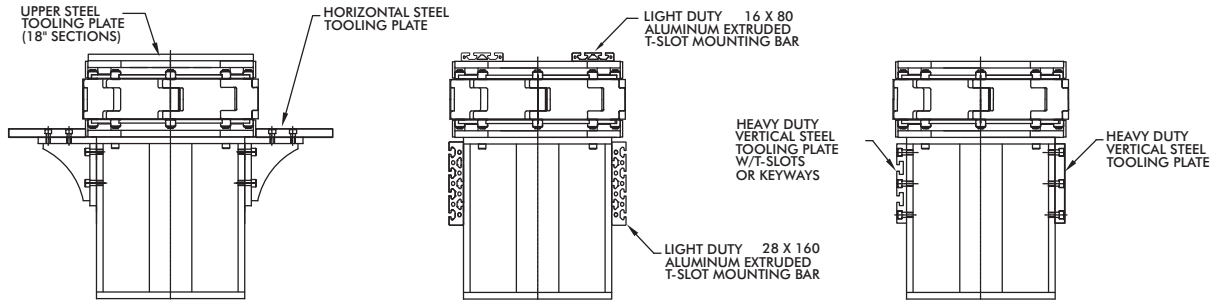
DRIVE - SIDE 2



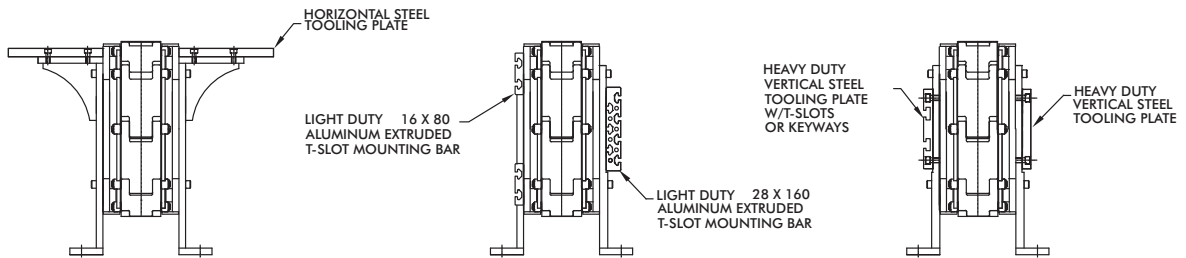
Dimensions and technical information are subject to change without notice.



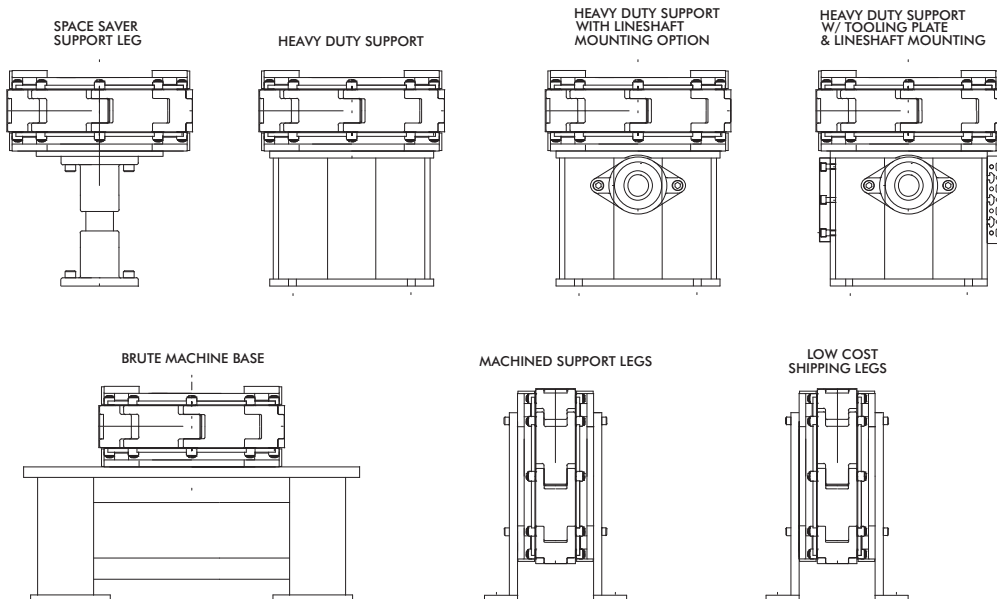
Tooling Plate Options Carousel



Tooling Plate Options Over/Under

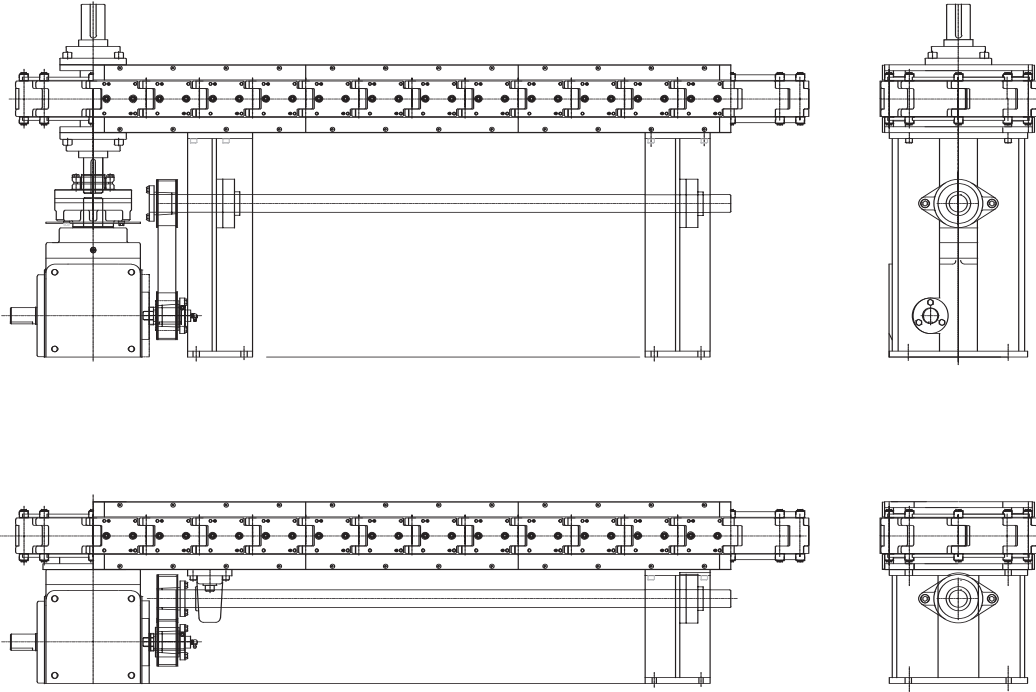


Support Leg Options

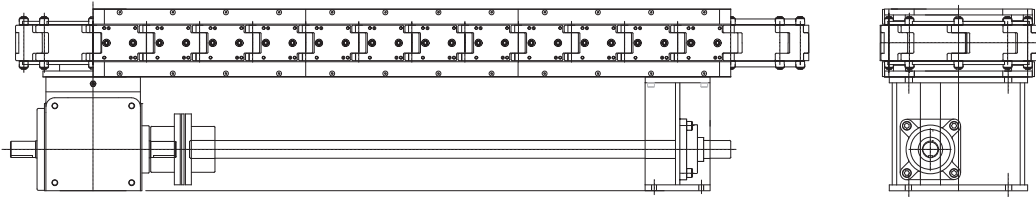


Dimensions and technical information are subject to change without notice.

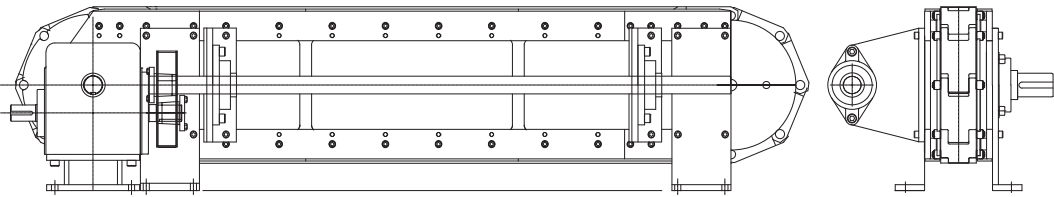
### Lower Lineshaft Options Belt Driven



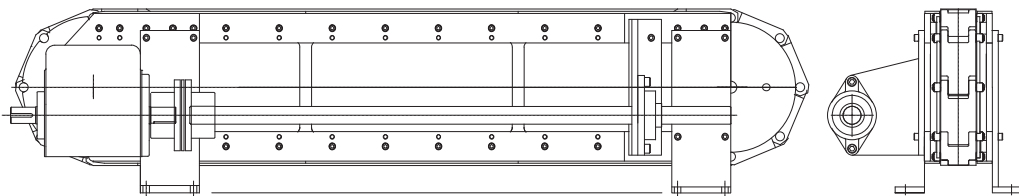
### Lower Lineshaft Options Direct Driven



### Drive Side Lineshaft Options Belt Driven



### Drive Side Lineshaft Options Direct Driven



Dimensions and technical information are subject to change without notice.