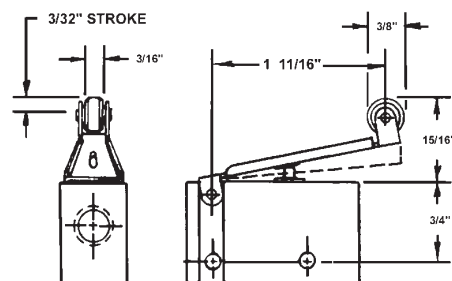
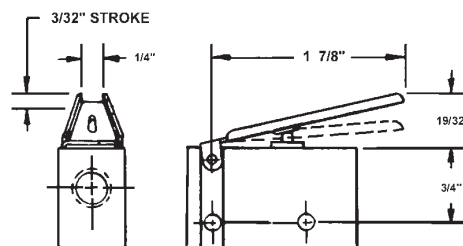
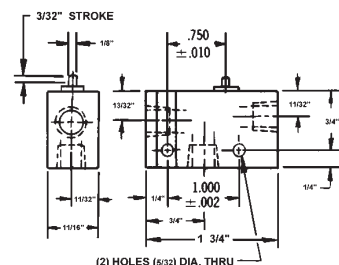
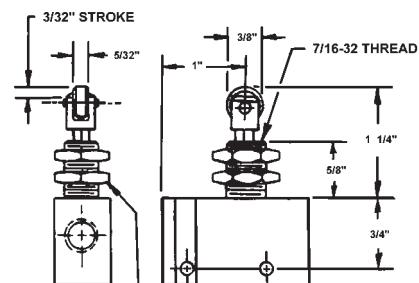
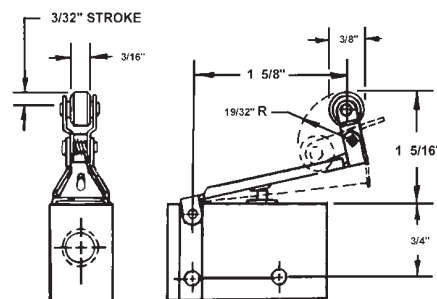


Normally Closed & Normally Open
Snap Action response
Pressure Range: 30-150 psi
Rugged aluminum die-cast body
Stainless steel spools—standard
Buna N seals—teflon coated
Mounting holes on standard 1" centers



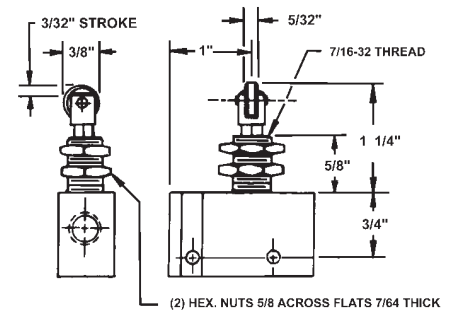
A close-up photograph of a mechanical component, likely a valve or actuator. It features a dark, cast metal body with a threaded port on the left side. A lever arm is attached to the top, and a small cylindrical component is visible on the right side. The component is set against a white background with a blue horizontal line above it.



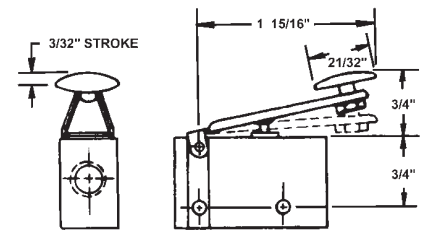
(2) HEX. NUTS 5/8 ACROSS FLATS 7/64 THICK

Air-Mite's Model MV2 Series offers 3-way miniature valves in normally closed or normally open styles. The valve body is rugged die cast aluminum. Valves are easily repaired in the field by simply removing the snap ring in the center section & replacing the o-ring seals. MV2 miniature valves have the same mounting centers as electrical switches and all ports are tapped 1/8" npt.

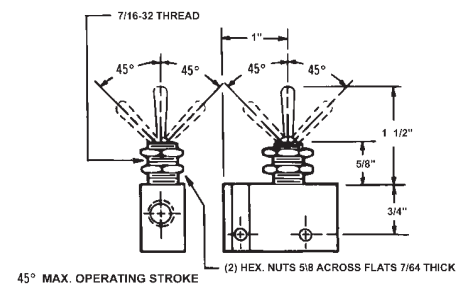
MV2-F CROSS ROLLER PLUNGER (Panel Mounted)



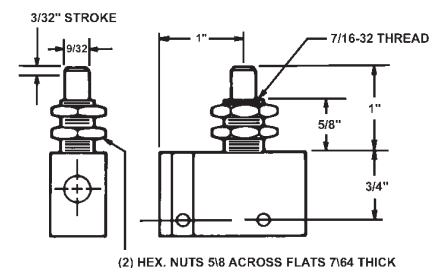
MV2-G FINGERTIP LEVER (Panel Mounted)



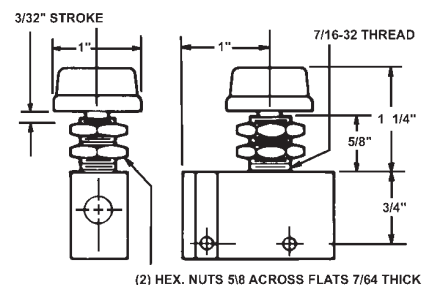
MV2-H TOGGLE (45° Any Direction) (Panel Mounted)



MV2-L STRAIGHT LINE TOGGLE (45°—Two Directions) (Panel Mounted)



MV2-J PLUNGER (Panel Mounted)



MV2-K KNOB (Panel Mounted)

