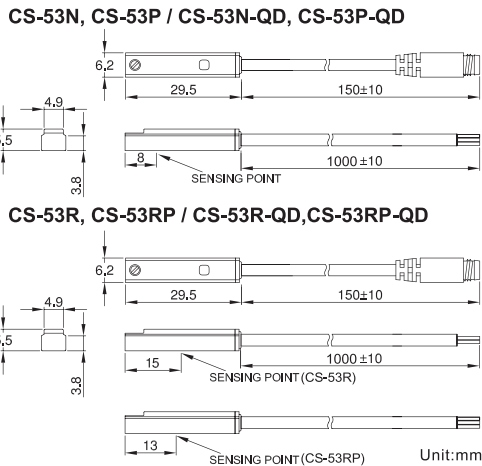
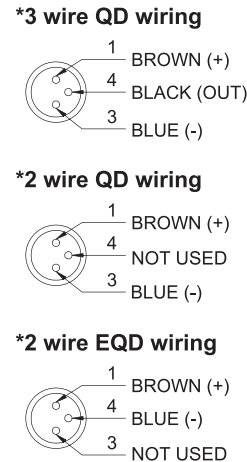


■ DIMENSION



■ QD PINOUT

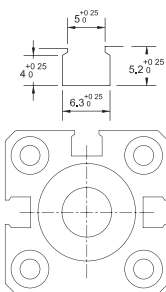


■ SPECIFICATION

TYPE	CS-53R	CS-53N	CS-53P	CS-53RP
CONNECT DIAGRAM				
CHARACTERISTICS				
WIRING METHOD	2-Wire Type	3-Wire Type		
SWITCHING LOGIC	SPST, Normally Open	Solid State Output, Normally Open		SPST, Normally Open
SENSOR TYPE	Reed Switch	NPN Current Sinking	PNP Current Sourcing	Reed Switch
OPERATING VOLTAGE	5~240V DC/AC	10~30V DC		10~30V DC/AC
SWITCHING CURRENT	100 mA max.			500 mA. max.
CONTACT RATING	10 W max.	3 W max.		10 W max.
CURRENT CONSUMPTION	--	8 mA @ 24V DC max.		10 mA @ 24V DC max.
VOLTAGE DROP	3.5 V max.	1.5 V max.		0.1 V @ 100mA max.
LEAKAGE CURRENT	--	0.01 mA max.		--
INDICATOR	Red LED		Yellow LED	
CABLE	ø3, 2C, PUR	ø3, 3C, PUR		
OPERATING FREQUENCY	200 Hz	1000 Hz		200 Hz
MAGNET REQUIREMENT (NOTE 1)	70 Gauss Parallel	45 Gauss Parallel		60 Gauss Parallel
TEMPERATURE RANGE	-10~70°C (+14~158°F)			
SHOCK (NOTE 2)	30 G	50 G		30 G
VIBRATION (NOTE 3)	9 G			
ENCLOSURE CLASSIFICATION	IEC 529 IP 67 (NEMA 6)			
PROTECTION CIRCUIT (NOTE 4)	1	2, 3, 4		1

WARNING: Never exceed rating (Watt=Voltage x Amperage). Permanent damage to sensor will occur.
 NOTE:
 1. Measuring standard target: ø15.5Xø8X5t (Anisotropy rubber magnet)
 2. Sin wave / X, Y, Z 3 directions / 3 times each direction / 11 ms each time.
 3. Double amplitude 1.5 mm / 10Hz~55Hz~10Hz (Sweep 1 min) / X, Y, Z 3 directions / 1 hour each time.
 4. 1=None / 2=Short-circuit / 3=Power Source Reverse polarity / 4=Surge Suppression

■ GROOVE DIMENSION



Unit:mm