

# SLEEVE VALVE

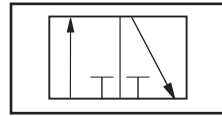
SLV-SERIES



SLV-Series sleeve valves combines high flow capability with short stroke in a small package. Unlike ball valves, sleeve valves do not require space for a handle.

SLV-Series sleeve valves features smooth opening/closing operation. Outlet is exhausted to atmosphere when the valves is closed. Unit is constructed of brass body and anodized aluminum sleeve for corrosion resistance.

**Symbol**



**HOW TO ORDER**

**SLV** —    
 Sleeve Valve Connection (NPT)  
 18=1/8", 28=1/4"  
 38=3/8", 48=1/2"

**SPECIFICATIONS**

ITEM	MODEL	SLV-18	SLV-28	SLV-38	SLV-48
FLUID		AIR			
CONNECTION	NPT	1/8" M-F	1/4" M-F	3/8" M-F	1/2" M-F
VALVE FUNCTION		2-POSITION, 3-WAY, VENT TO EXHAUST			
LENGTH	IN.	2-11/16"	2-7/8"	3"	3-5/8"
HEX	IN.	5/8"	11/16"	3/4"	1"
SLEEVE DIAMETER		1"	1-1/4"	1-1/4"	1-7/8"
MATERIAL	BODY	BRASS			
	SLEEVE	ANODIZED ALUMINUM			
OPERATING PRESSURE		0 TO 140 PSI (0 to 10 kg/cm <sup>2</sup> )			
OPERATING TEMPERATURE		41° TO 140°F (5° to 60°C)			

# CHECK VALVE

CHV-SERIES



CHV-Series check valves are used in fluid systems to permit free flow of air in one direction (forward flow) and prevent flow in the opposite direction (reverse flow) only, as indicated by an arrow stamped on the valve body.

**Symbol**



**HOW TO ORDER**

**CHV** —   —    
 Check Valve Connection Port Option  
 18=1/8", 28=1/4" None=Female to Female  
 38=3/8", 48=1/2" MF=Male (IN) to Female (OUT)

**SPECIFICATIONS**

ITEM	MODEL	CHV-18	CHV-28	CHV-38	CHV-48
FLUID		AIR			
CONNECTION	NPT	1/8"	1/4"	3/8"	1/2"
LENGTH	IN.	1-3/4"	2"	2"	2-1/2"
HEX	IN.	9/16"	11/16"	7/8"	1"
EFFECTIVE AREA	Cv (mm <sup>2</sup> )	1.22 (22.51)	2.00 (36.90)	2.50 (46.13)	3.80 (70.11)
MATERIAL	BODY	BRASS (NICKEL-PLATED)			
	VALVE	BRASS (NICKEL-PLATED)			
	SPRING	STAINLESS STEEL			
	O-RING	NBR			
CRACKING PRESSURE		5 PSI			
OPERATING PRESSURE		5 TO 213 PSIG (0.3 to 15.0 kg/cm <sup>2</sup> )			
OPERATING TEMPERATURE		41° TO 140° F (5° to 60°C)			