

AMLOK ROD CLAMP TECHNICAL DATA

AMLOK Type- RLN	Rod Dia. [in]	Bore Dia. [in]	Axial Holding Force [lbf]	B [in]	C [in]	D [in]	FL [in]	E [in]	FB [in]	L [in]	P [in]	R [in]	V [in]	X [in]	Y [in]	Weight [lb]
RLN-063150	0.625	1.500	200	1.125	0.375	0.422	0.896	1.98	0.281	3.05	1/8 NPT	1.430	0.63	0.60	0.25	3.0
RLN-063200	0.625	2.000	400	1.125	0.375	0.515	1.031	2.48	0.343	3.06	1/8 NPT	1.840	0.63	0.50	0.38	4.0
RLN-063250	0.625	2.500	650	1.125	0.375	0.515	1.031	2.98	0.343	3.18	1/8 NPT	2.190	0.63	0.50	0.50	5.0
RLN-100200	1.000	2.000	300	1.500	0.563	0.515	1.031	2.48	0.343	3.75	1/8 NPT	1.840	0.63	0.31	0.38	3.5
RLN-100250	1.000	2.500	450	1.500	0.563	0.515	1.031	2.98	0.343	3.65	1/8 NPT	2.190	0.63	0.38	0.50	5.0
RLN-100325	1.000	3.250	950	1.500	0.563	0.719	1.281	3.725	0.406	4.00	1/4 NPT	2.760	0.89	0.56	0.00	8.0
RLN-100400	1.000	4.000	1550	1.500	0.563	0.719	1.281	4.48	0.406	4.00	1/4 NPT	3.320	0.89	0.56	0.00	13.5
RLN-100500	1.000	5.000	2150	1.500	0.563	0.844	1.500	5.48	0.531	4.00	1/4 NPT	4.100	0.89	0.56	0.00	17.5
RLN-138325	1.375	3.250	950	2.000	0.625	0.719	1.281	3.725	0.406	4.00	1/4 NPT	2.760	0.89	0.56	0.00	8.1
RLN-138400	1.375	4.000	1550	2.000	0.625	0.719	1.281	4.48	0.406	4.00	1/4 NPT	3.320	0.89	0.56	0.00	12.0
RLN-138500	1.375	5.000	1950	2.000	0.625	0.844	1.500	5.48	0.531	4.00	1/4 NPT	4.100	0.89	0.56	0.00	18.0
RLN-138600	1.375	6.000	2650	2.000	0.625	0.844	1.500	6.48	0.531	4.50	1/4 NPT	4.880	1.00	0.56	0.00	24.5
RLN-175600	1.750	6.000	2450	2.375	0.750	0.844	1.500	6.48	0.531	4.50	1/4 NPT	4.880	1.00	0.56	0.00	22.5

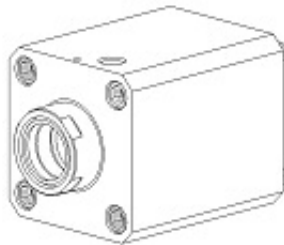
RLN NFPA Mounts

MXO / SN



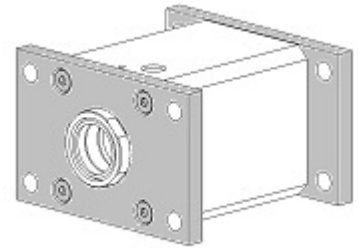
No Mount

CMXO



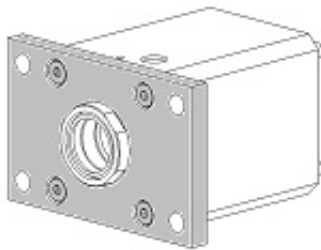
Cylinder Mount
(4) Sleeve Nut and Tie Rod

SA / CA



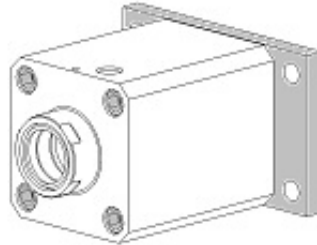
SA: Stand Alone
CS: Cylinder Mount

SMF1 / CMF1



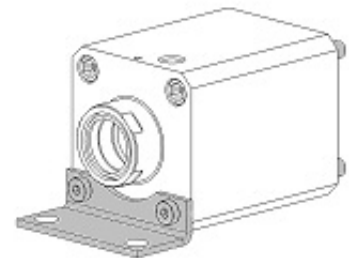
SMF1: Stand Alone
CMF1: Cylinder Mount

CMF2



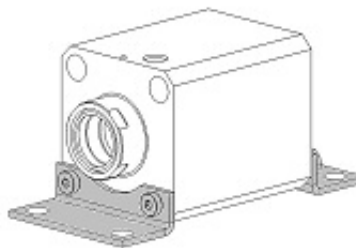
CMF2: Cylinder Mount

CMS1



CMS2: Cylinder Mount

SMS1



SMS1: Stand Alone