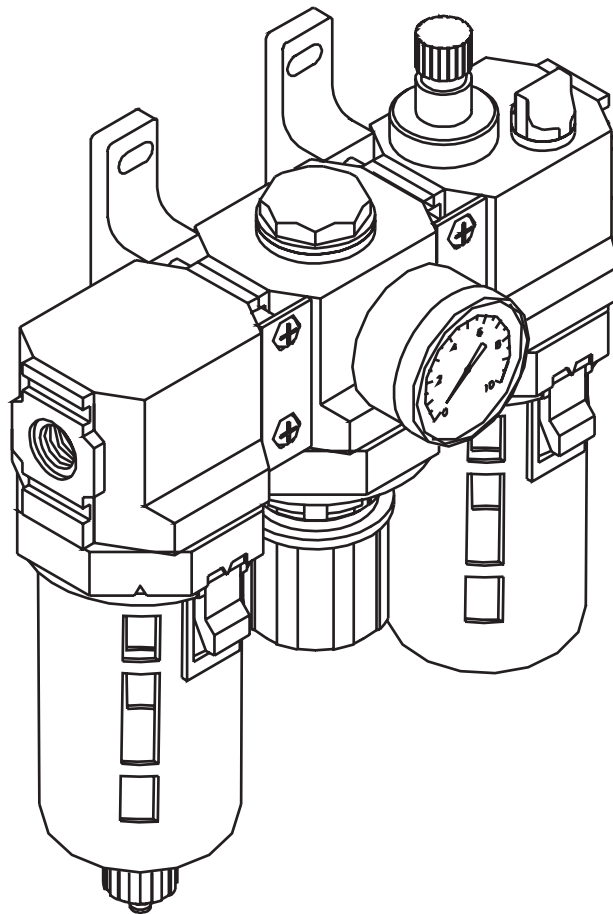


AF/AR/AL Series Air Preparation Units

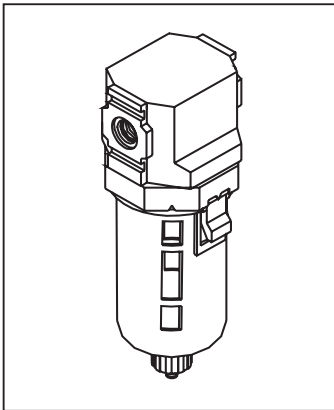


Quality
Endorsed
Company
ISO 9001
Lic 0689
Standards
Australia

*Vital Technologies for
Motion and Control*



| | |
|--|----|
| AF Series Filters..... | 2 |
| AR Series Regulators..... | 4 |
| AFR Series Filter/Regulators | 6 |
| AL Series Lubricators..... | 8 |
| AU Series Filter+Regulator+Lubricator Sets | 10 |
| AU Series Filter/Regulator+Lubricator Sets | 12 |
| Accessories and Spare Parts..... | 14 |
| Mountings and Body Connectors | 16 |



Features

- Large surface 5 micron elements
- High flow rates
- Highly efficient in removing liquids and solids
- Modular system with BSPT ports
- Global product
- Secure but easily removable bowls
- Bowl guards are standard
- 360° visibility of water level
- FRL units may be assembled for right-to-left or left-to-right flow pattern

Ordering Information

| Part Number | Nominal body size | Port size | Element | Drain | Bowl | Bowl guard |
|---------------|-------------------|-----------|----------|--------|---------------|--------------------|
| AF200-8 | 1/8" 3.1mm | Rc1/4 | 5 micron | Manual | Polycarbonate | None |
| AF200-8AD20 | 1/8" 3.1mm | Rc1/4 | 5 micron | Auto | Polycarbonate | None |
| AF320-8 | 3/8" 9.5mm | Rc1/4 | 5 micron | Manual | Polycarbonate | With quick release |
| AF320-8-AD41 | 3/8" 9.5mm | Rc1/4 | 5 micron | Auto | Polycarbonate | With quick release |
| AF320-10 | 3/8" 9.5mm | Rc3/8 | 5 micron | Manual | Polycarbonate | With quick release |
| AF320-10-AD41 | 3/8" 9.5mm | Rc3/8 | 5 micron | Auto | Polycarbonate | With quick release |
| AF420-15 | 1/2" 12.7mm | Rc1/2 | 5 micron | Manual | Polycarbonate | With quick release |
| AF420-15-AD41 | 1/2" 12.7mm | Rc1/2 | 5 micron | Auto | Polycarbonate | With quick release |

Technical information

| | | | |
|----------------------|--|---------------|----------------|
| Working pressure: | 0.5 – 8.5 bar, 50 – 850 kPa, 7 – 120 PSI | | |
| Working temperature: | 0 – 60°C | | |
| Flow rates: | Please refer to diagrams on page 3 | | |
| Elements: | Porous plastic | | |
| Sump capacity: | AFR200: 11 mL | AFR320: 52 mL | AFR420: 116 mL |
| Visibility: | 360° visibility of water level | | |
| Servicing: | No tools are required for removing bowl and replacing element | | |
| Accessories: | Filter-to-regulator bolt kit supplied with each AF200 filter | | |
| Combination sets: | Combination sets are supplied as kits of components for user to assemble | | |
| Materials: | Certain components in these products are made of aluminium. For equivalent products with no aluminium components contact Parker Technical Service. | | |

CAUTION:

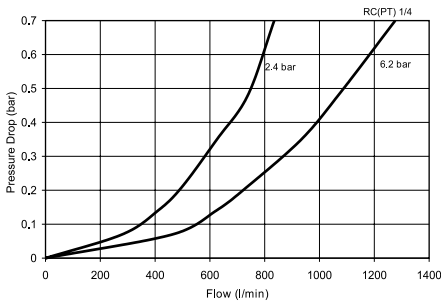
Polycarbonate bowls, being transparent and tough, are ideal for use with Filters and Lubricators. They are suitable for use in normal industrial environments, but should not be located in areas where they could be subjected to direct sunlight, an impact blow, nor temperatures outside of the rated range. As with most plastics, some chemicals can cause damage. Polycarbonate bowls should not be exposed to chlorinated hydro-carbons, ketones, esters and certain alcohols. They should not be used in air systems where compressors are lubricated with fire-resistant fluids such as phosphate ester and di-ester types.

Metal bowls are recommended where ambient and/or media conditions are not compatible with polycarbonate bowls. Metal bowls resist the action of most such solvents, but should not be used where strong acids or bases are present or in salt laden atmospheres. Consult the factory for specific recommendations where these conditions exist.

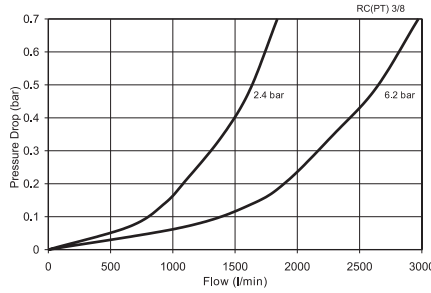
TO CLEAN POLYCARBONATE BOWLS USE MILD SOAP AND WATER ONLY!
DO NOT use cleansing agents such as acetone, benzene, carbon tetrachloride, gasoline, toluene, etc., which are damaging to this plastic.

Performance Characteristics

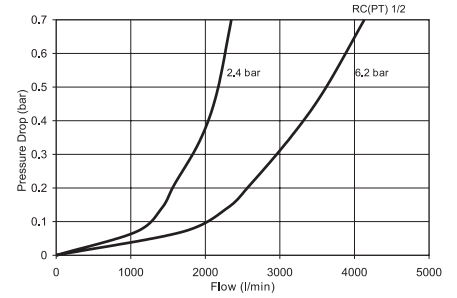
AF200-8



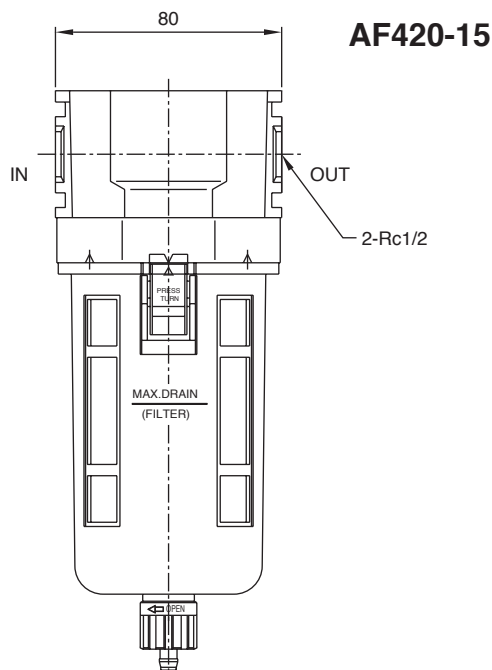
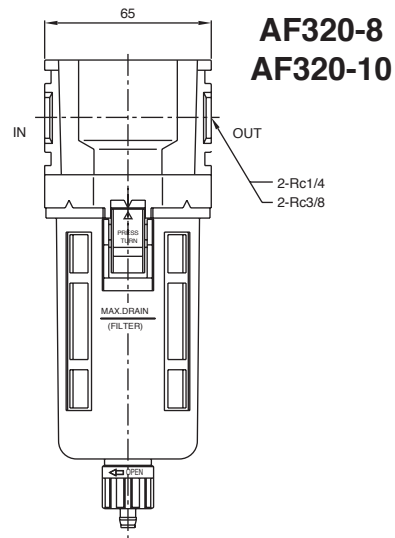
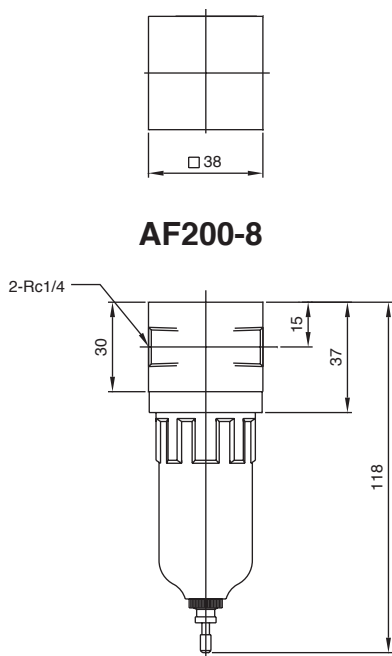
AF320-10



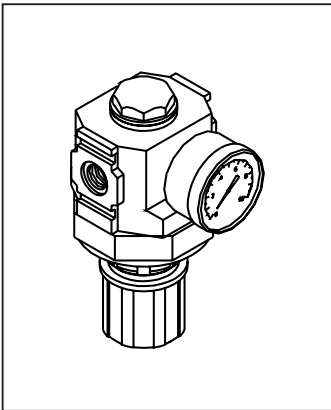
AF420-15



Dimensions



For information on mountings and accessories please refer to page 16



Features

- High flow rates
- Accurate pressure regulation
- Quick response
- Modular system with BSPT ports
- Mounting bracket included
- Pressure gauge included
- Global product
- Non-rising removable adjustment knobs
- Balanced poppets
- FRL units may be assembled for right-to-left or left-to-right flow pattern

Ordering Information

| Part Number | Nominal body size | Port size | Type |
|-------------|-------------------|-----------|-------|
| AR200-8 | 1/8" 3.1mm | Rc1/4 | Bleed |
| AR320-8 | 3/8" 9.5mm | Rc1/4 | Bleed |
| AR320-10 | 3/8" 9.5mm | Rc3/8 | Bleed |
| AR420-15 | 1/2" 12.7mm | Rc1/2 | Bleed |

Technical information

| | |
|----------------------|--|
| Working pressure: | 0.5 – 8.5 bar, 50 – 850 kPa, 7 – 120 PSI |
| Working temperature: | 0 – 60°C |
| Flow rates: | Please refer to diagrams on page 5 |
| Adjustment: | By non-rising lockable knob |
| Accessories: | Supplied with mounting bracket and pressure gauge as standard |
| Combination sets: | Combination sets are supplied as kits of components for user to assemble |
| Materials: | Certain components in these products are made of aluminium. For equivalent products with no aluminium components contact Parker Technical Service. |

CAUTION:

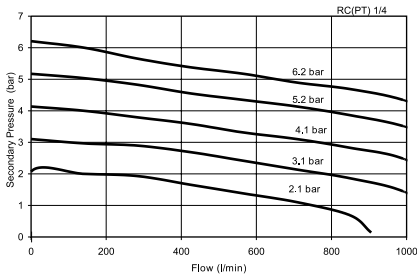
REGULATOR PRESSURE ADJUSTMENT – The working range of knob adjustment is designed to permit outlet pressures within their full range. Pressure adjustment beyond this range is also possible because the knob is not a limiting device. This is a common characteristic of most industrial regulators, and limiting devices may be obtained only by special design.

Air Line Regulators

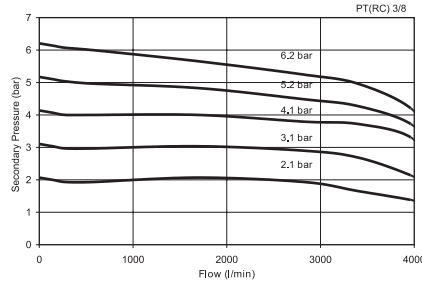
Parker AF/AR/AL Series Air Preparation Units

Performance Characteristics

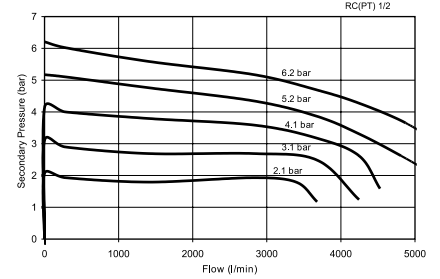
AR200-8



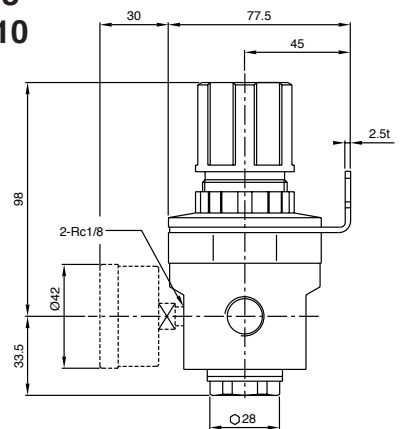
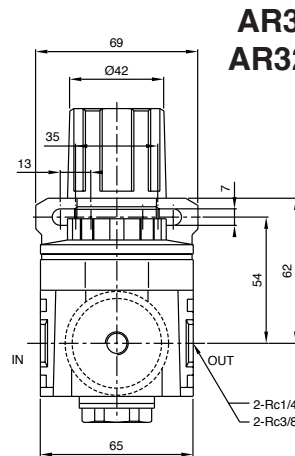
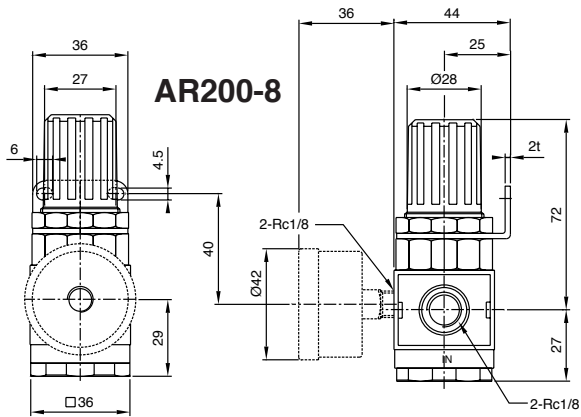
AR320-10



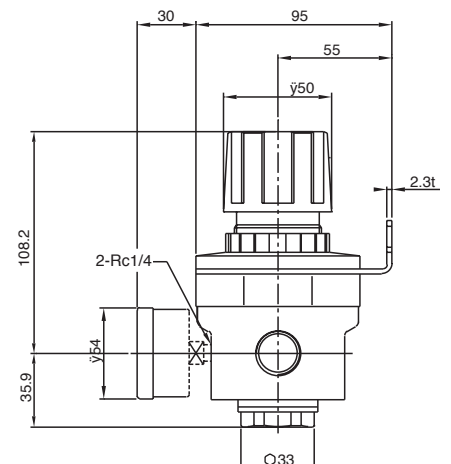
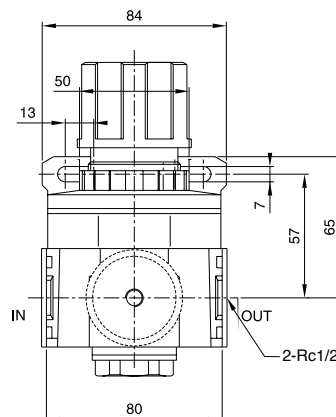
AR420-15



Dimensions



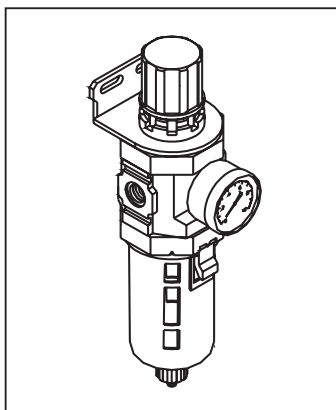
AR420-15



For information on mountings and accessories please refer to page 16

For panel mounting

| Part Number | Hole dia | Max. panel thickness |
|-------------|----------|----------------------|
| AR200-8 | 30 | 4 |
| AR320-8 | 37 | 4 |
| AR320-10 | 37 | 4 |
| AR420-15 | 43 | 4 |



Features

- Large surface 5 micron elements
- High flow rates
- Highly efficient in removing liquids
- Highly efficient in removing solids
- Accurate pressure regulation
- Quick response
- Modular system with BSPT ports
- Secure but easily removable bowls
- FRL units may be assembled for right-to-left or left-to-right flow pattern
- Bowl guards are standard
- 360° visibility of water level
- Mounting bracket included
- Pressure gauge included
- Global product
- Non-rising removable adjustment knobs

Ordering Information

| Part Number | Nominal body size | Port size | Filter | | Bowl | Bowl guard | Regulator Type |
|----------------|-------------------|-----------|----------|--------|---------------|--------------------|----------------|
| | | | Element | Drain | | | |
| AFR200-8 | 1/8" 3.1mm | Rc1/4 | 5 micron | Manual | Polycarbonate | None | Bleed |
| AFR200-8AD20 | 1/8" 3.1mm | Rc1/4 | 5 micron | Auto | Polycarbonate | None | Bleed |
| AFR320-8 | 3/8" 9.5mm | Rc1/4 | 5 micron | Manual | Polycarbonate | With quick release | Bleed |
| AFR320-8-AD41 | 3/8" 9.5mm | Rc1/4 | 5 micron | Auto | Polycarbonate | With quick release | Bleed |
| AFR320-10 | 3/8" 9.5mm | Rc3/8 | 5 micron | Manual | Polycarbonate | With quick release | Bleed |
| AFR320-10-AD41 | 3/8" 9.5mm | Rc3/8 | 5 micron | Auto | Polycarbonate | With quick release | Bleed |
| AFR420-15 | 1/2" 12.7mm | Rc1/2 | 5 micron | Manual | Polycarbonate | With quick release | Bleed |
| AFR420-15-AD41 | 1/2" 12.7mm | Rc1/2 | 5 micron | Auto | Polycarbonate | With quick release | Bleed |

Technical information

| | |
|-----------------------|--|
| Working pressure: | 0.5 – 8.5 bar, 50 – 850 kPa, 7 – 120 PSI |
| Working temperature: | 0 – 60°C |
| Flow rates: | Please refer to diagrams on page 7 |
| Elements: | Porous plastic |
| Sump capacity: | AFR200: 11 mL AFR320: 52 mL AFR420: 116 mL |
| Visibility: | 360° visibility of water level |
| Regulator adjustment: | By non-rising lockable knob |
| Accessories: | Supplied with mounting bracket and pressure gauge as standard |
| Servicing: | No tools are required for removing bowl and replacing element |
| Combination sets: | Combination sets are supplied as kits of components for user to assemble |
| Materials: | Certain components in these products are made of aluminium. For equivalent products with no aluminium components contact Parker Technical Service. |

CAUTION:

Polycarbonate bowls, being transparent and tough, are ideal for use with Filters and Lubricators. They are suitable for use in normal industrial environments, but should not be located in areas where they could be subjected to direct sunlight, an impact blow, nor temperatures outside of the rated range. As with most plastics, some chemicals can cause damage. Polycarbonate bowls should not be exposed to chlorinated hydro-carbons, ketones, esters and certain alcohols. They should not be used in air systems where compressors are lubricated with fire-resistant fluids such as phosphate ester and di-ester types.

Metal bowls are recommended where ambient and/or media conditions are not compatible with polycarbonate bowls. Metal bowls resist the action of most such solvents, but should not be used where strong acids or bases are present or in salt laden atmospheres. Consult the factory for specific recommendations where these conditions exist.

CAUTION:

REGULATOR PRESSURE ADJUSTMENT – The working range of knob adjustment is designed to permit outlet pressures within their full range. Pressure adjustment beyond this range is also possible because the knob is not a limiting device. This is a common characteristic of most industrial regulators, and limiting devices may be obtained only by special design.

TO CLEAN POLYCARBONATE BOWLS USE MILD SOAP AND WATER ONLY!

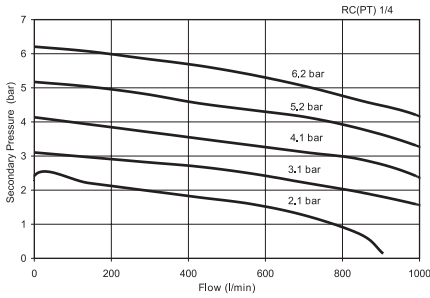
DO NOT use cleansing agents such as acetone, benzene, carbon tetrachloride, gasoline, toluene, etc., which are damaging to this plastic.

Air Line Filter/ Regulators

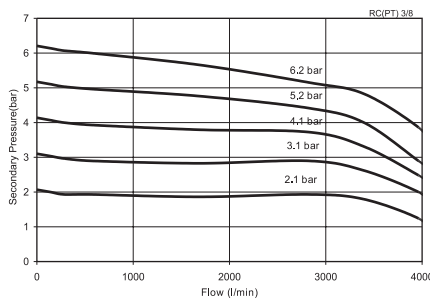
Parker AF/AR/AL Series Air Preparation Units

Performance Characteristics

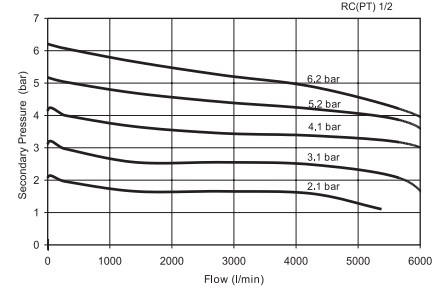
AFR200-8



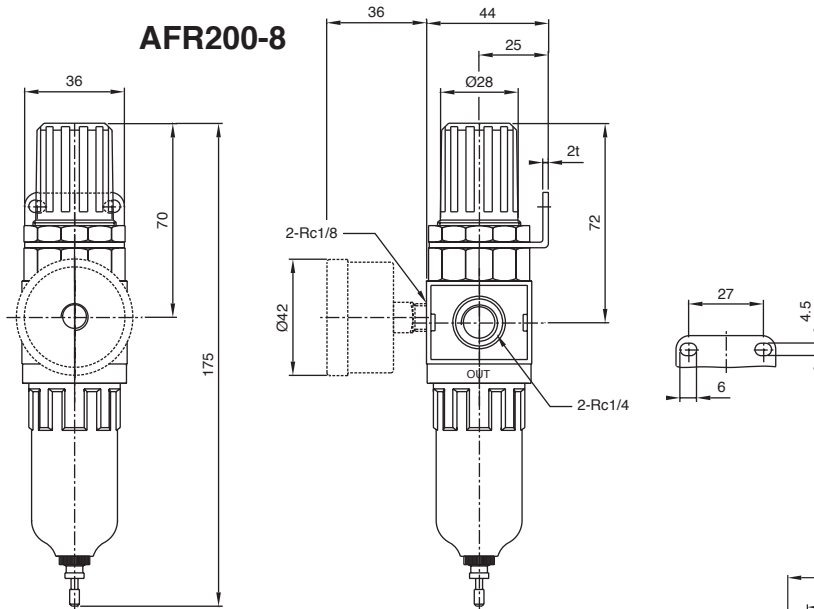
AFR320-10



AFR420-15

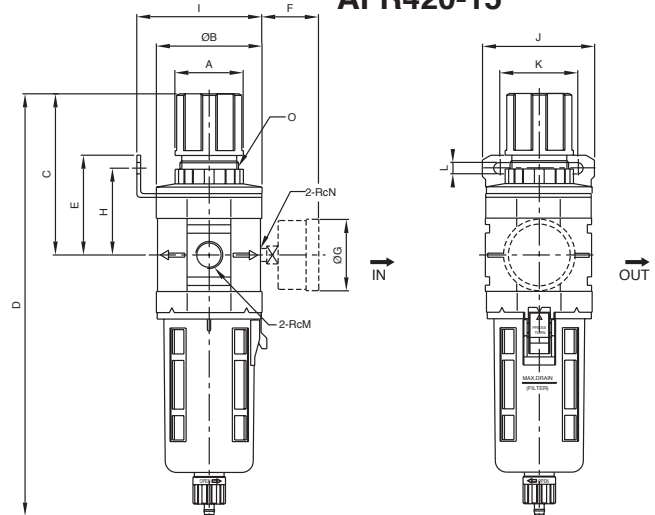


Dimensions



For information on mountings and accessories please refer to page 16

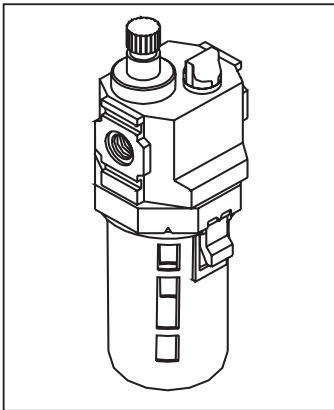
**AFR320-8
AFR320-10
AFR420-15**



For panel mounting

| Part Number | Hole dia | Max. panel thickness |
|-------------|----------|----------------------|
| AFR200-8 | 30 | 4 |
| AFR320-8 | 37 | 4 |
| AFR320-10 | 37 | 4 |
| AFR420-15 | 43 | 4 |

| MODEL | A | B | C | D | E | F | G | H | I | J | K | L | M | N | O |
|--------|----|----|-----|-----|------|----|----|------|------|----|----|---|---------|-----|---------|
| AFR320 | 42 | 65 | 98 | 248 | 61.5 | 30 | 45 | 53.5 | 77 | 69 | 48 | 7 | 1/4 3/8 | 1/8 | M36X1.5 |
| AFR420 | 50 | 80 | 110 | 279 | 65 | 35 | 54 | 57 | 94.5 | 84 | 63 | 7 | 1/2 | 1/4 | M42X1.5 |



Features

- High flow rates
- Oil delivery proportional to air flow
- Modular system with BSPT ports
- Global product
- Secure but easily removable bowls
- 360° visibility of oil level and oil feed
- FRL units may be assembled for right-to-left or left-to-right flow pattern

Ordering Information

| Part Number | Nominal body size | Port size | Bowl | Bowl guard |
|-------------|-------------------|-----------|---------------|--------------------|
| AL200-8 | 1/8" 3.1mm | Rc1/4 | Polycarbonate | None |
| AL320-8 | 3/8" 9.5mm | Rc1/4 | Polycarbonate | With quick release |
| AL320-10 | 3/8" 9.5mm | Rc3/8 | Polycarbonate | With quick release |
| AL420-15 | 1/2" 12.7mm | Rc1/2 | Polycarbonate | With quick release |

Technical information

| | |
|-------------------------------|--|
| Working pressure: | 0.5 – 8.5 bar, 50 – 850 kPa, 7 – 120 PSI |
| Working temperature: | 0 – 60°C |
| Flow rates: | Please refer to diagrams on page 9 |
| Minimum flow for lubrication: | 0.6 L/s (ANR) @ 6.9 bar |
| Bowl capacity: | AL200: 28 mL AL320: 114 mL AL420: 214 mL |
| Visibility: | 360° visibility of oil level and feed rate |
| Filling: | No need to turn the air off for filling with oil |
| Servicing: | No tools are required for removing bowl |
| Accessories: | Lubricator-to-regulator bolt kit supplied with each AL200 lubricator |
| Combination sets: | Combination sets are supplied as kits of components for user to assemble |
| Materials: | Certain components in these products are made of aluminium. For equivalent products with no aluminium components contact Parker Technical Service. |
| Suggested lubricant: | Petroleum based oil of 100 to 200 SSU viscosity at 100°F (38°C) and an aniline point greater than 200°F (93°C) |

CAUTION:

Polycarbonate bowls, being transparent and tough, are ideal for use with Filters and Lubricators. They are suitable for use in normal industrial environments, but should not be located in areas where they could be subjected to direct sunlight, an impact blow, nor temperatures outside of the rated range. As with most plastics, some chemicals can cause damage. Polycarbonate bowls should not be exposed to chlorinated hydro-carbons, ketones, esters and certain alcohols. They should not be used in air systems where compressors are lubricated with fire-resistant fluids such as phosphate ester and di-ester types.

Metal bowls are recommended where ambient and/or media conditions are not compatible with polycarbonate bowls. Metal bowls resist the action of most such solvents, but should not be used where strong acids or bases are present or in salt laden atmospheres. Consult the factory for specific recommendations where these conditions exist.

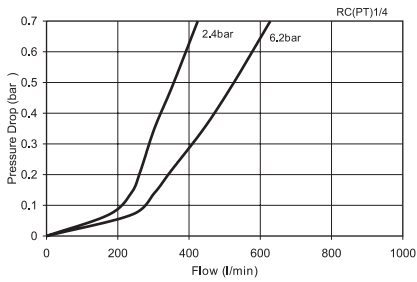
TO CLEAN POLYCARBONATE BOWLS USE MILD SOAP AND WATER ONLY!
DO NOT use cleansing agents such as acetone, benzene, carbon tetrachloride, gasoline, toluene, etc., which are damaging to this plastic.

Air Line Lubricators

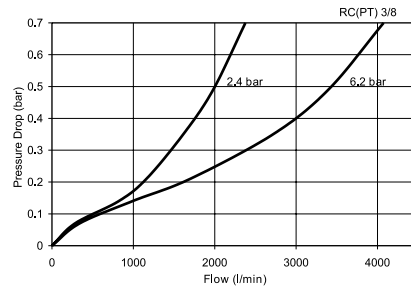
Parker AF/AR/AL Series Air Preparation Units

Performance Characteristics

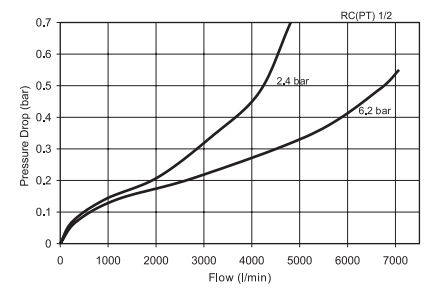
AL200-8



AL320-10

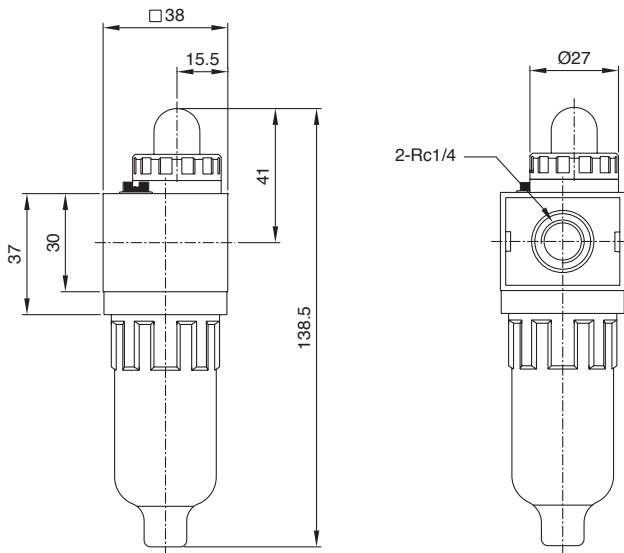


AL420-15

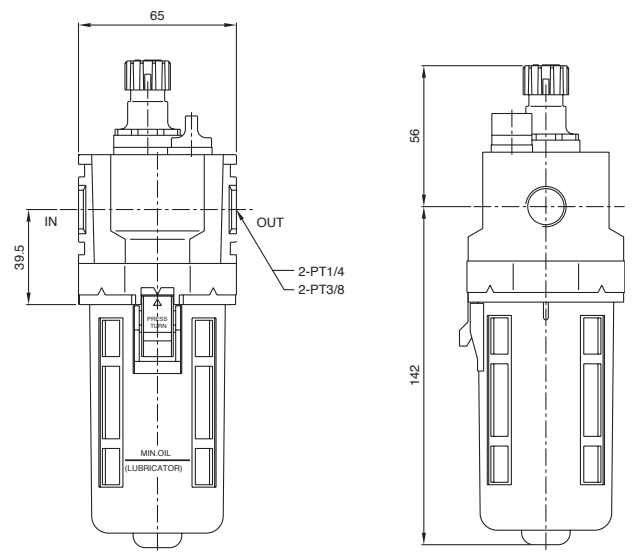


Dimensions

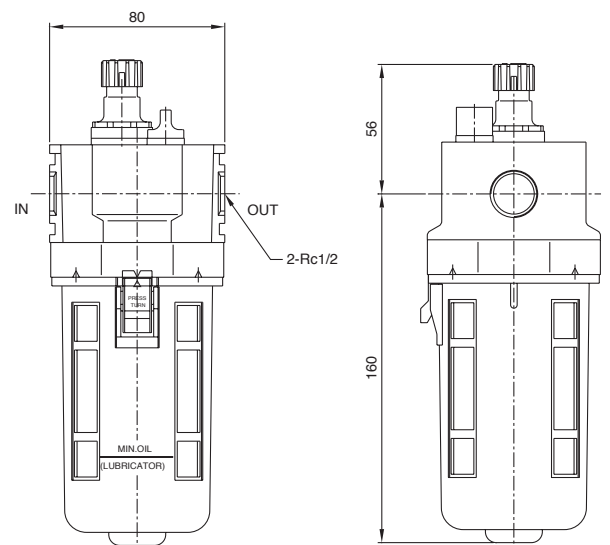
AL200-8



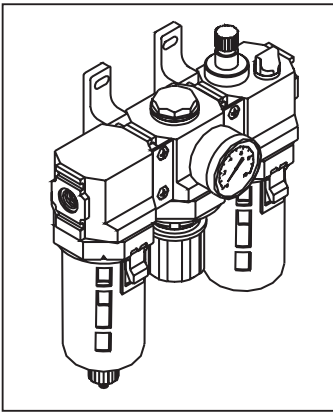
**AL320-8
AL320-10**



AL420-15



For information on mountings and accessories please refer to page 16



Features

- Large surface 5 micron elements
- High flow rates
- Highly efficient in removing liquids
- Highly efficient in removing solids
- Accurate pressure regulation
- Oil delivery proportional to air flow
- Modular system with BSPT ports
- Body connectors included
- Secure but easily removable bowls
- FRL units may be assembled for right-to-left or left-to-right flow pattern
- Bowl guards are standard
- 360° visibility of water and oil level
- Mounting brackets included
- Pressure gauge included
- Global product
- Non-rising removable adjustment knobs
- Balanced poppets

Ordering Information

| Part Number | Nominal body size | Port size | Filter and Lubricator | | | | Regulator Type |
|---------------|-------------------|-----------|-----------------------|--------|---------------|--------------------|----------------|
| | | | Element | Drain | Bowl | Bowl guard | |
| AU200-8 | 1/8" 3.1mm | Rc1/4 | 5 micron | Manual | Polycarbonate | None | Bleed |
| AU200-8-AD20 | 1/8" 3.1mm | Rc1/4 | 5 micron | Auto | Polycarbonate | None | Bleed |
| AU320-8 | 3/8" 9.5mm | Rc1/4 | 5 micron | Manual | Polycarbonate | With quick release | Bleed |
| AU320-8-AD41 | 3/8" 9.5mm | Rc1/4 | 5 micron | Auto | Polycarbonate | With quick release | Bleed |
| AU320-10 | 3/8" 9.5mm | Rc3/8 | 5 micron | Manual | Polycarbonate | With quick release | Bleed |
| AU320-10-AD41 | 3/8" 9.5mm | Rc3/8 | 5 micron | Auto | Polycarbonate | With quick release | Bleed |
| AU420-15 | 1/2" 12.7mm | Rc1/2 | 5 micron | Manual | Polycarbonate | With quick release | Bleed |
| AU420-15-AD41 | 1/2" 12.7mm | Rc1/2 | 5 micron | Auto | Polycarbonate | With quick release | Bleed |

Technical information

| | |
|------------------------|--|
| Working pressure: | 0.5 – 8.5 bar, 50 – 850 kPa, 7 – 120 PSI |
| Working temperature: | 0 – 60°C |
| Flow rates: | Please refer to diagrams on preceding pages |
| Filter elements: | Porous plastic |
| Bowl capacity: | Please refer to specifications for individual components |
| Filter visibility: | 360° visibility of water level |
| Regulator adjustment: | By non-rising lockable knob |
| Lubricator visibility: | 360° visibility of oil level and feed rate |
| Accessories: | Supplied with mounting/connector kits and pressure gauge as standard |
| Servicing: | No tools are required for removing bowl and replacing element |
| Combination sets: | Combination sets are supplied as kits of components for user to assemble |
| Materials: | Certain components in these products are made of aluminium. For equivalent products with no aluminium components contact Parker Technical Service. |

CAUTION:

Polycarbonate bowls, being transparent and tough, are ideal for use with Filters and Lubricators. They are suitable for use in normal industrial environments, but should not be located in areas where they could be subjected to direct sunlight, an impact blow, nor temperatures outside of the rated range. As with most plastics, some chemicals can cause damage. Polycarbonate bowls should not be exposed to chlorinated hydro-carbons, ketones, esters and certain alcohols. They should not be used in air systems where compressors are lubricated with fire-resistant fluids such as phosphate ester and di-ester types.

Metal bowls are recommended where ambient and/or media conditions are not compatible with polycarbonate bowls. Metal bowls resist the action of most such solvents, but should not be used where strong acids or bases are present or in salt laden atmospheres. Consult the factory for specific recommendations where these conditions exist.

REGULATOR PRESSURE ADJUSTMENT – The working range of knob adjustment is designed to permit outlet pressures within their full range. Pressure adjustment beyond this range is also possible because the knob is not a limiting device. This is a common characteristic of most industrial regulators, and limiting devices may be obtained only by special design.

TO CLEAN POLYCARBONATE BOWLS USE MILD SOAP AND WATER ONLY!

DO NOT use cleansing agents such as acetone, benzene, carbon tetrachloride, gasoline, toluene, etc., which are damaging to this plastic.

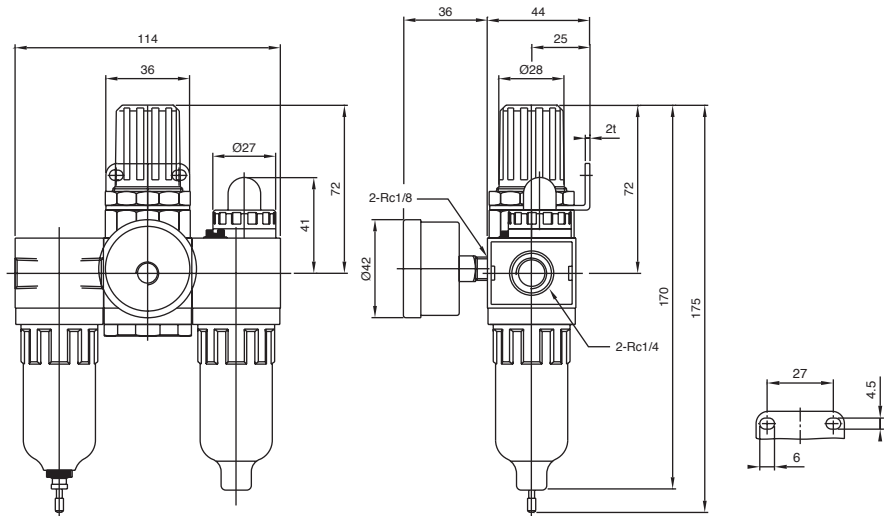
CAUTION:

Filter + Regulator + Lubricator Sets

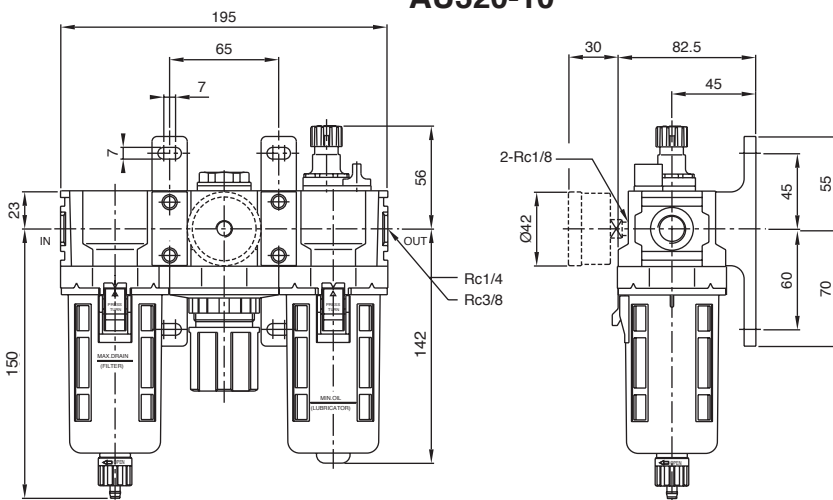
Parker AF/AR/AL Series Air Preparation Units

Dimensions

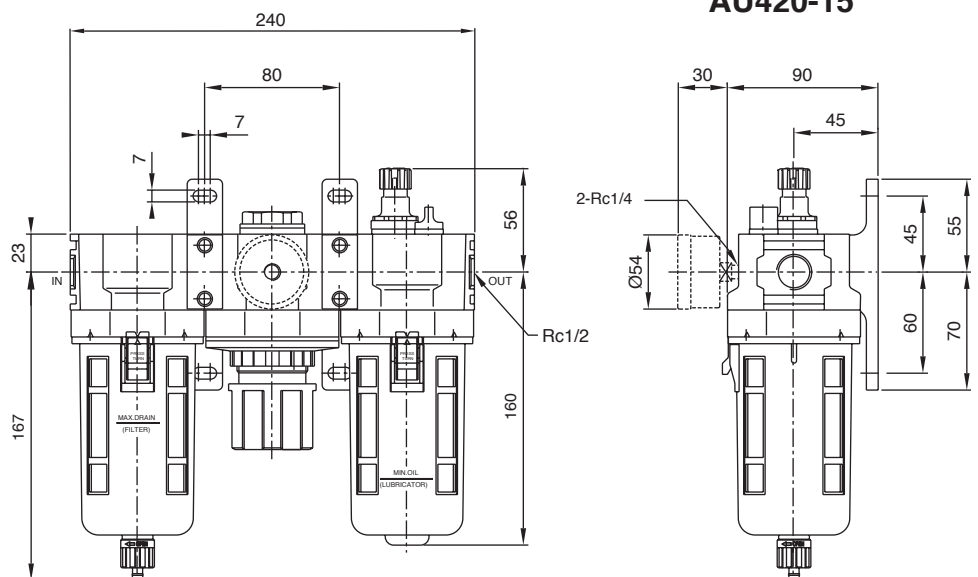
AU200-8



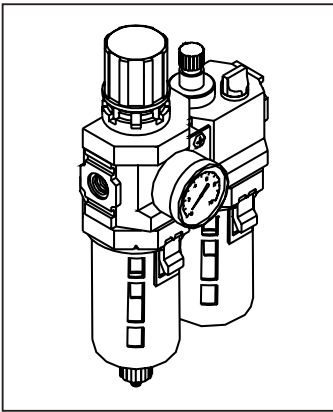
**AU320-8
AU320-10**



AU420-15



Performance diagrams on preceding pages



Features

- Large surface 5 micron elements
- High flow rates
- Highly efficient in removing liquids
- Highly efficient in removing solids
- Accurate pressure regulation
- Oil delivery proportional to air flow
- Modular system with BSPT ports
- Body connectors included
- Secure but easily removable bowls
- FRL units may be assembled for right-to-left or left-to-right flow pattern
- Bowl guards are standard
- 360° visibility of water and oil level
- Mounting brackets included
- Pressure gauge included
- Global product
- Non-rising removable adjustment knobs
- Balanced poppets

Ordering Information

| Part Number | Nominal body size | Port size | Filter/Regulator and Lubricator | | | | | |
|---------------|-------------------|-----------|---------------------------------|--------|---------------|--------------------|-------|--|
| | | | Element | Drain | Bowl | Bowl guard | Type | |
| AU210-8 | 1/8" 3.1mm | Rc1/4 | 5 micron | Manual | Polycarbonate | None | Bleed | |
| AU210-8-AD20 | 1/8" 3.1mm | Rc1/4 | 5 micron | Auto | Polycarbonate | None | Bleed | |
| AU321-8 | 3/8" 9.5mm | Rc1/4 | 5 micron | Manual | Polycarbonate | With quick release | Bleed | |
| AU321-8-AD41 | 3/8" 9.5mm | Rc1/4 | 5 micron | Auto | Polycarbonate | With quick release | Bleed | |
| AU321-10 | 3/8" 9.5mm | Rc3/8 | 5 micron | Manual | Polycarbonate | With quick release | Bleed | |
| AU321-10-AD41 | 3/8" 9.5mm | Rc3/8 | 5 micron | Auto | Polycarbonate | With quick release | Bleed | |
| AU421-15 | 1/2" 12.7mm | Rc1/2 | 5 micron | Manual | Polycarbonate | With quick release | Bleed | |
| AU421-15-AD41 | 1/2" 12.7mm | Rc1/2 | 5 micron | Auto | Polycarbonate | With quick release | Bleed | |

Technical information

| | |
|------------------------|--|
| Working pressure: | 0.5 – 8.5 bar, 50 – 850 kPa, 7 – 120 PSI |
| Working temperature: | 0 – 60°C |
| Flow rates: | Please refer to diagrams on preceding pages |
| Filter elements: | Porous plastic |
| Bowl capacity: | Please refer to specifications for individual components |
| Filter visibility: | 360° visibility of water level |
| Regulator adjustment: | By non-rising lockable knob |
| Lubricator visibility: | 360° visibility of oil level and feed rate |
| Accessories: | Supplied with mounting/connector kit and pressure gauge as standard |
| Servicing: | No tools are required for removing bowl and replacing element |
| Combination sets: | Combination sets are supplied as kits of components for user to assemble |
| Materials: | Certain components in these products are made of aluminium. For equivalent products with no aluminium components contact Parker Technical Service. |

CAUTION:

Polycarbonate bowls, being transparent and tough, are ideal for use with Filters and Lubricators. They are suitable for use in normal industrial environments, but should not be located in areas where they could be subjected to direct sunlight, an impact blow, nor temperatures outside of the rated range. As with most plastics, some chemicals can cause damage. Polycarbonate bowls should not be exposed to chlorinated hydro-carbons, ketones, esters and certain alcohols. They should not be used in air systems where compressors are lubricated with fire-resistant fluids such as phosphate ester and di-ester types.

Metal bowls are recommended where ambient and/or media conditions are not compatible with polycarbonate bowls. Metal bowls resist the action of most such solvents, but should not be used where strong acids or bases are present or in salt laden atmospheres. Consult the factory for specific recommendations where these conditions exist.

REGULATOR PRESSURE ADJUSTMENT – The working range of knob adjustment is designed to permit outlet pressures within their full range. Pressure adjustment beyond this range is also possible because the knob is not a limiting device. This is a common characteristic of most industrial regulators, and limiting devices may be obtained only by special design.

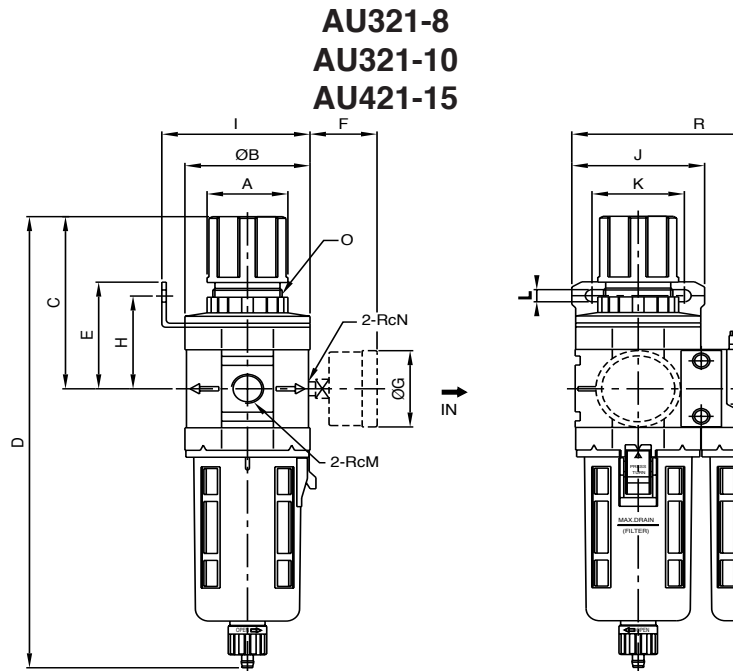
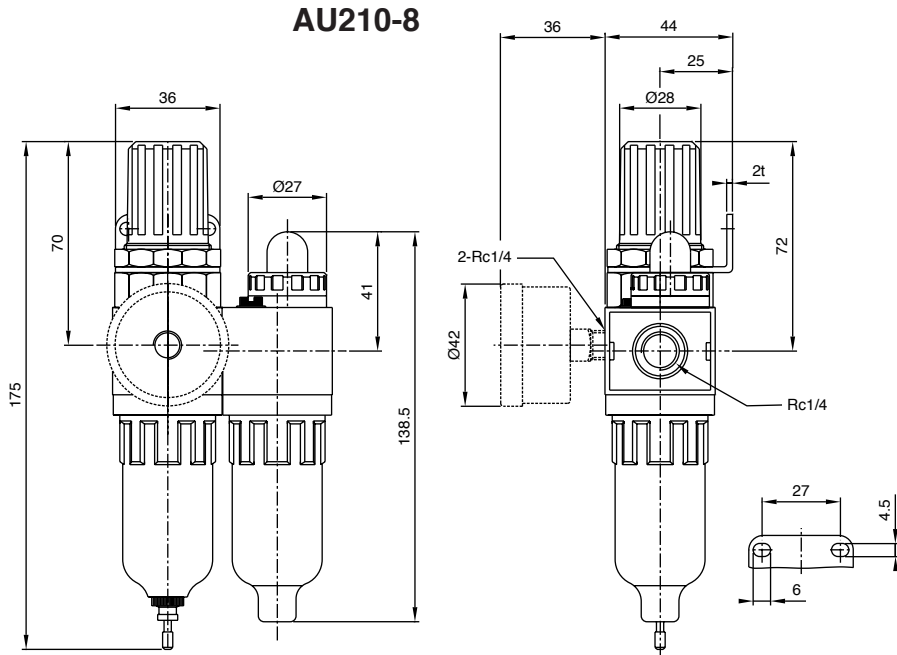
TO CLEAN POLYCARBONATE BOWLS USE MILD SOAP AND WATER ONLY!

DO NOT use cleansing agents such as acetone, benzene, carbon tetrachloride, gasoline, toluene, etc., which are damaging to this plastic.

CAUTION:

Filter /Regulator + Lubricator Sets Parker AF/AR/AL Series Air Preparation Units

Dimensions



| MODEL | A | ØB | C | D | E | F | ØG | H | I | J | K | L | M | N | O | P | Q | R | |
|-------|----|----|-----|-----|------|----|----|------|------|----|----|---|-----|-----|---------|---------|-----|-----|-----|
| AU321 | 42 | 65 | 98 | 248 | 61.5 | 30 | 45 | 53.5 | 77 | 69 | 48 | 7 | 1/4 | 3/8 | 1/8 | M36X1.5 | 56 | 198 | 132 |
| AU421 | 50 | 80 | 110 | 279 | 65 | 35 | 54 | 57 | 94.5 | 84 | 63 | 7 | 1/2 | 1/4 | M42X1.5 | 56 | 216 | 163 | |

Performance diagrams on preceding pages

Accessories and Spare Parts

Parker AF/AR/AL Series Air Preparation Units

| Filters | AF200 | AF320 | AF420 |
|-------------------------------------|--------------------|------------------------------|------------------------------|
| Repair kit | N.A. | N.A. | N.A. |
| Bowl kit *** Bowl guard | AU200KABPM N.A. | AU320KABGM Included above | AU420KABGM Included above |
| Auto drain kit Manual drain kit | AD20 AU200KADM | AD41 PS512P | AD41 PS512P |
| Filter element kit, 5 micron | AU200KAESE | AU320KAESE | AU420KAESE |
| Mounting brackets and connectors | | See page 16 | |

N.A. = Not available

*** = Buy drain kit separately

| Regulators | AR200 | AR320 | AR420 |
|---|------------------------|------------------------|------------------------|
| Piston and valve repair kit* Adjuster repair kit** | AU200KARR AU200KAPN | AU320KARR AU320KAPN | AU420KARR AU420KAPN |
| Pressure gauge, 0-10 bar | GAD40 | GAD40 | GAD50 |
| Mounting brackets and connectors | | See page 16 | |

* = Valve, valve spring, spring housing, piston and seals

** = Handle, stop and screw assembly

*** = Buy drain kit separately

Accessories and Spare Parts

Parker AF/AR/AL Series Air Preparation Units

| Filter/Regulators | AFR200 | AFR320 | AFR420 |
|---|------------------------|------------------------------|------------------------------|
| Piston and valve repair kit* Adjuster repair kit** | AU200KARR AU200KAPN | AU320KARR AU320KAPN | AU420KARR AU420KAPN |
| Bowl kit *** Bowl guard | AU200KABPM N.A. | AU320KABGM Included above | AU420KABGM Included above |
| Auto drain kit Manual drain kit | AD20 AU200KADM | AD41 PS512P | AD41 PS512P |
| Filter element kit, 5 micron | AU200KAESE | AU320KAESE | AU420KAESE |
| Pressure gauge, 0-10 bar | GAD40 | GAD40 | GAD50 |
| Mounting brackets and connectors | | See page 16 | |

N.A. = Not available

* = Valve, valve spring, spring housing, piston and seals

** = Handle, stop and screw assembly

*** = Buy drain kit separately

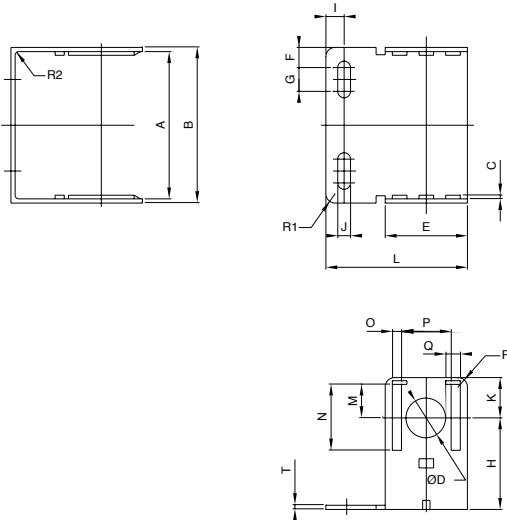
| Lubricators | AL200 | AL320 | AL420 |
|---|------------------------|------------------------------|------------------------------|
| Repair kit | N.A. | N.A. | N.A. |
| Bowl kit Bowl guard | AU200KABPN N.A. | AU320KABGN Included above | AU420KABGN Included above |
| Fill plug kit Sight dome kit Drip control kit | AU200KAPL AU200KASD | AU320KAPL AU320KASD | AU320KAPL AU320KASD |
| Mounting brackets and connectors | | See page 16 | |

N.A. = Not available

Mountings and Connectors

Parker AF/AR/AL Series Air Preparation Units

Bracket BKC320, BKC420



| Part Number | For use with |
|-------------|--------------|
|-------------|--------------|

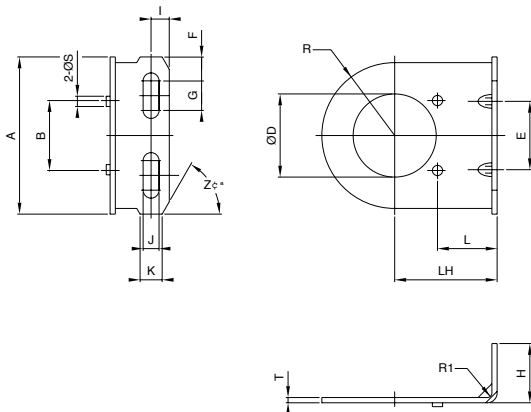
| | |
|--------|-------------|
| BKC320 | AF320 AL320 |
|--------|-------------|

| | |
|--------|-------------|
| BKC420 | AF420 AL420 |
|--------|-------------|

| | A | B | ØD | E | F | G | H | I | J | K |
|--------|----|----|----|-----|------|----|----|----|---|----|
| BKC320 | 65 | 70 | 18 | 4.5 | 10.5 | 13 | 26 | 10 | 7 | 22 |
| BKC420 | 80 | 85 | 22 | 4.5 | 10.5 | 13 | 26 | 10 | 7 | 22 |

| | L | M | N | O | P | Q | R | R1 | R2 | T |
|--------|------|------|----|---|------|---|---|----|----|-----|
| BKC320 | 77.5 | 18.3 | 36 | 5 | 27.2 | 8 | 4 | 5 | 2 | 2.3 |
| BKC420 | 77.5 | 18.3 | 36 | 5 | 27.2 | 8 | 5 | 5 | 2 | 2.3 |

Bracket BKL320, BKL420



| Part Number | For use with |
|-------------|--------------|
|-------------|--------------|

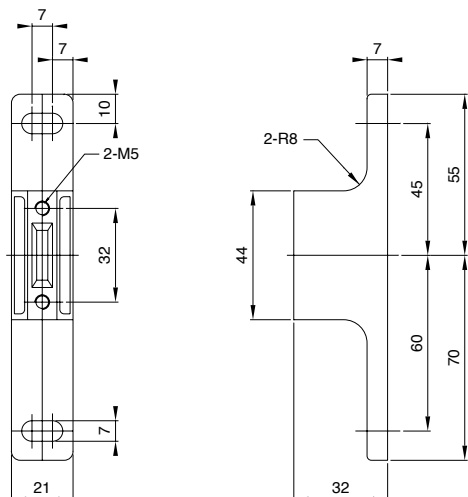
| | |
|--------|--------------|
| BKL320 | AR320 AFR320 |
|--------|--------------|

| | |
|--------|--------------|
| BKL420 | AR420 AFR420 |
|--------|--------------|

| | A | B | ØD | E | F | G | H | I | J | K |
|--------|----|------|------|----|------|----|----|---|---|----|
| BKL320 | 69 | 30.7 | 36.5 | 30 | 10.5 | 13 | 26 | 8 | 7 | 10 |
| BKL420 | 84 | 36.8 | 42.5 | 40 | 10.5 | 13 | 26 | 8 | 7 | 10 |

| | L | LH | R | R1 | ØS | T | Z* |
|--------|------|----|------|----|-----|-----|----|
| BKL320 | 26.2 | 45 | 32 | 2 | 4.5 | 2.3 | 60 |
| BKL420 | 33.3 | 55 | 39.5 | 2 | 4 | 2.3 | 60 |

Connector/Mounting Bracket BKU320, BKU420



| Part Number | For use with | Comprising |
|-------------|--------------|------------|
|-------------|--------------|------------|

| | | |
|--------|-------|---|
| BKU320 | AU320 | Two connector/mounting brackets, four bolts and two O-rings |
| BKU420 | AU420 | |

| | | |
|--------|-------|---|
| BKU321 | AU321 | One connector, two bolts and one O-ring |
| BKU421 | AU421 | |

Refer pages 11 and 13 for dimensions