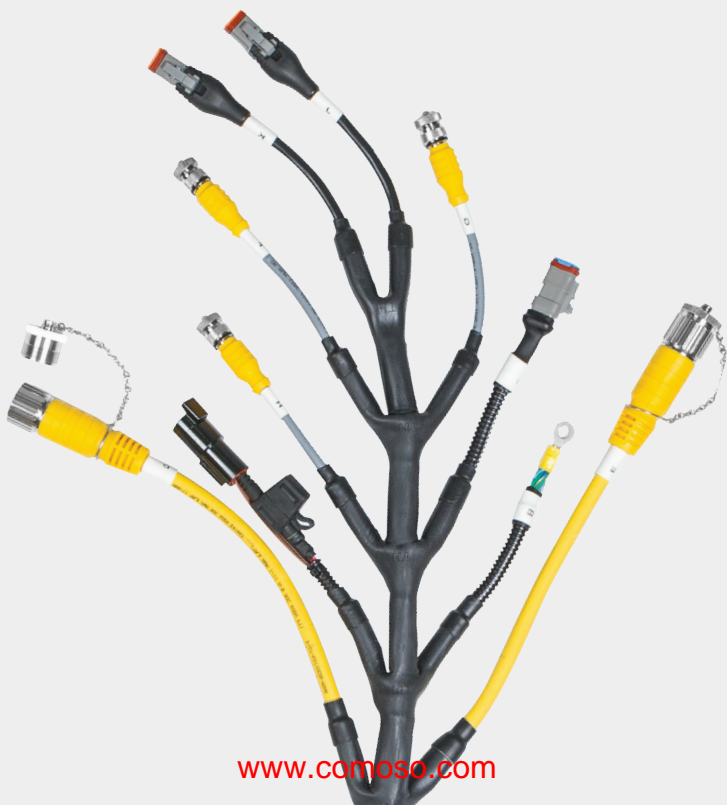


TURCK

Connectivity
Capabilities



www.comoso.com

TURCK

YOUR CONNECTIVITY SOLUTIONS PROVIDER

Welcome to the Turck connectivity capabilities brochure. With over 1,000 OEM connectors and terminals, and more than 2,000 cable and wire types, the solution to your specification is only a phone call away.

Turck leads the industry in customized solutions, connector styles, design speed and delivery. Our proven capabilities are reflected in over 20,000 unique connectivity products that are built to last. When you team up with Turck, you gain a long term partner with your best interests in mind.











**Turck offers everything you need to get connected.
Contact us today to partner on a custom solution.**



How would you like to connect?

**ENDLESS POSSIBILITIES,
ONE MANUFACTURER.**

www.comoso.com

M8 - Picofast®	
M12 - Eurofast®	
1/2" - Microfast®	
M16 - Versafast®	
7/8", 1", 1-1/8" - Minifast®	
M23, M27 - Multifast®	
M16, M23, A-Size, D-Size - Powerfast®	
Network Media	
Custom Solutions	
Process Automation	

See what we've done...

**...challenge us to
something new.**

- 1,000 OEM off the shelf connectors
- 5.5 million meters of wire and cable in stock
- Custom solution engineering team
- North American manufacturing
- Harness capabilities
- Custom molding

1

M8 Thread

- 3, 4 and 6-pin
- 125 V, 2 A to 125 V, 4 A



2

TPU Continuous Flex

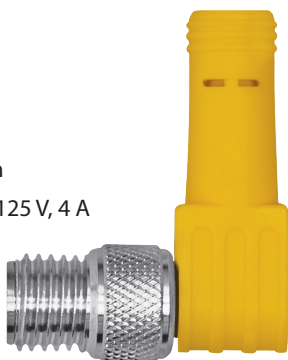
- Over 20 million flex cycles
- Excellent oil, UV and weather resistance



3

M8 Thread

- 3, 4 and 6-pin
- 125 V, 2 A to 125 V, 4 A



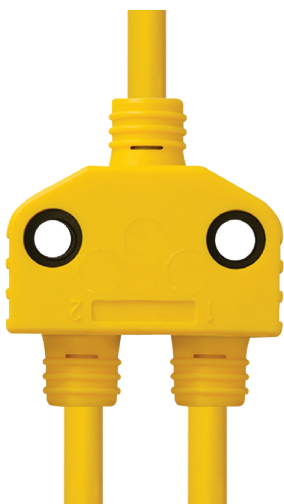
M8 Connector to Splitter

- 125 V, 4 A



Compact M8 Splitter with Mounting Holes

- Simple connector, or connector with extension cable



M8 Connector Branches from Splitter

- 125 V, 4 A



7

M8 Snap Lock (Locking Sleeve)

- 3, 4 and 6-pin
- 125 V, 2 A to 125 V, 4 A



8

TPU General Purpose

- Cut/abrasion immune
- Excellent oil, UV and weather resistance



9

M8 Snap Lock with LEDs

- 10 VAC/20 VDC, 2 and 4 A
- PNP and NPN Signals





M12 Thread

- Accepts 20, 22 and 24 AWG conductors
- 2-6, 10 and 12-pin
- 60 VAC/75 VDC, 2 A to 250 V, 4 A



PVC General Purpose

- Flexible
- UV, sunlight, oil, water and grease resistant



M12 Thread

- Accepts 22 AWG conductors
- 3 and 4-pin
- 250 V, 4 A

13

M12 Thread

- Accepts 18, 20, 22 and 24 AWG conductors
- 2, 6, 8, 10 and 12-pin
- 60 VAC/75 VDC, 2 A to 250 V, 4 A
- Shield to coupling nut



14

TPU-Shield and Double Jacket

- Braided shield
- Cut/abrasion resistant



15

M12 Thread

- Accepts 18, 20, 22 and 24 AWG conductors
- 3-6, 8, 10 and 12-pin
- 60 VAC/75 VAC, 2 A to 250 V, 4 A





M12 Armored

- Shield tied to coupling nut
- 3, 4 and 5-pin
- 250 V, 4 A



PVC Armored Instrumentation Cable

- UL ITC/PLTC or MC listings
- CSA ACIC
- Excellent UV and sunlight resistance
- Crush and impact resistant
- Physical protection against rodents



M12 Armored

- Shield tied to coupling nut
- 3, 4 and 5-pin
- 250 V, 4 A

19

M12 with LEDs

- 3, 4 and 5-pin
- 10-30 V, 4 A
- PNP and NPN signals



20

Instrumentation Tray Cable

- PVC or TPE
- UL 13 PLTC, UL 2250 ITC and CSA CMX-outdoor-GMG listed
- Suitable for indoor and outdoor circuits
- FT4 flame retardant, UV and oil resistant



21

M12 316 Stainless Steel

- Hex coupling nut 2-6, 10 and 12-pin
- 60 VAC/75 VAC, 2 A to 250 VDC, 4 A





M12 Incremental Encoder Connector

- 3 indicator LEDs
- 8-pin
- 5-30 VDC



PVC Shielded

- RFI/EMI protection
- Differential and single ended mode applications



M12 Incremental Encoder Connector

- Shield tied to coupling nut
- RFI/EMI protection
- 8-pin
- 60 VAC/75 VDC, 2 A

25

M12 Reverse Key (B-Code)

- 3 and 5-pin
- 250 V, 4 A



26

Welding Cable TPE

- Weld slag/spatter resistant
- Oil and grease resistant
- -40 to +105 °C



27

M12 Reverse Key (B-Code)

- 3 and 5-pin
- 250 V, 4 A





1/2" Thread

- Accepts 20 and 22 AWG conductors
- 3, 4, 5 and 6-pin
- 250 V, 4 A



TPU Coil Cord

- For repetitive motion
- Customize to any length
- UV, weather and oil resistant



1/2" Thread

- Accepts 18 AWG conductors
- 2, 3 and 5-pin
- 250 V, 4 A

31

M16 Thread

- Accepts 18, 22, 24 and 26 AWG conductors
- 5-8, 12, 14 and 19-pin
- 30 V, 3 A to 125 V, 8 A



32

Instrumentation Tray Cable

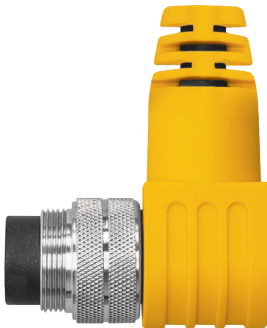
- PVC or TPE
- UL13 PLTC, UL 2250 ITC and CSA CMX-outdoor-GMG listed
- Suitable for indoor and outdoor circuits
- FT4 flame retardant, UV and oil resistant



33

M16 Thread

- Accepts 18, 22, 24 and 26 AWG conductors
- 5-8, 12, 14 and 19-pin
- 30 V, 3 A to 125 V, 8 A





Wash Down Connector

- Wash down mold material and contact holders
- Standard or with shielding
- Stainless steel coupling nut



Wash Down Cable

- TPV cable jacket
- Chemical resistance against cleaning agents
- Excellent flexibility
- -60 to +105 °C



Wash Down Connector

- Wash down mold material and contact holders
- Standard or with shielding
- Stainless steel coupling nut

37

7/8" Thread

- Accepts 16 and 22 AWG conductors
- 2 through 6-pin
- 600 V, 9 A



38

Instrumentation Tray/ Exposed Run/Direct Burial Cable

- UL 13 PLTC,
UL 2250 ITC/NEC 727
- CSA CIC and shipboard listed
- FT4 flame retardant
- UV, sunlight and oil resistant
- Suitable for burial
- -40 to +90 °C



39

7/8" Thread

- Accepts 16 and 22 AWG conductors
- 2 through 6-pin
- 600 V, 9 A



7/8" – Minifast

7/8" – Minifast



7/8" Armored

- Shield tied to coupling nut
- 2 through 6-pin
- 600 V, 9 A



Instrumentation Trays Exposed Run/ Direct Burial Cable

- UL ITC/PLTC or MC listings
- CSA ACIC
- Excellent UV and sunlight resistance
- Crush and impact resistant
- Physical protection against rodents



7/8" Armored

- Shield tied to coupling nut
- 2 through 6-pin
- 600 V, 9 A

43

1" Thread

- Accepts 16 and 22 AWG conductors
- 6, 7 and 8-pin
- 600 VAC/VDC, 8 A



44

Flexible Service Cable

- SOOW and SJOOW rating
- Oil and sunlight resistant
- Excellent cut through and abrasion resistance
- -40 to +105 °C



45

1-1/8" Thread

- Accepts 18 and 22 AWG conductors
- 9, 10, 12 and 19-pin
- 600 VAC/VDC, 7 A



1" – Minifast

1-1/8" – Minifast



46

M23 Thread

- Shield tied to coupling nut
- 7, 12 and 19-pin
- 150 V, 9 A to 300 V, 20 A

47

PVC Shielded

- EMI/RFI protection
- Tray rated



48

M23 Thread

- Shield tied to coupling nut
- 7, 12 and 19-pin
- 150 V, 9 A to 300 V, 20 A



49

M23 Thread

- 12, 16 and 19-pin
- 150 V, 9 A to 300 V, 20 A



50

PVC NAMUR

- Tray rated



51

M23 Thread Push-Pull Connection

- 12 and 19-pin
- 150 V, 9 A to 300 V, 6 A



M23 – Multifast

M23 – Multifast



52

M27 Thread

- 26 and 28-pin
- 150V, 5 A



53

PVC Multiconductor

- 25 and 27-conductor



54

M27 Thread

- 26 and 28-pin
- 150V, 5 A

55

M16 Thread - Power

- Accepts 12 and 14 AWG conductors
- Shielding available
- 2, 3 and 4-pin
- 600 V, 15-18 A



56

TC - Power Cable

- PVC or TPE
- Tray, exposed run and direct burial rated
- FT4 flame retardant
- UV, sunlight and oil resistant
- Shielding available
- Superior tensile and mechanical strength



57

M16 Thread - Power

- Accepts 12 and 14 AWG conductors
- Shielding available
- 2, 3 and 4-pin
- 600 V, 15-18 A



M16 – Powerfast

M16 – Powerfast



58

M23 Thread - Power

- Accepts 12, 14 and 18 AWG conductors
- 3-key
- Shielding available
- 6 and 8-pin
- 600 V, 30 A



59

TC - Power Cable

- PVC or TPE
- Tray, exposed run and direct burial rated
- FT4 flame retardant
- UV, sunlight and oil resistant
- Shielding available
- Superior tensile and mechanical strength



60

M23 Thread - Power

- Accepts 12, 14 and 18 AWG conductors
- 3-key
- Shielding available
- 6 and 8-pin
- 600 V, 30 A

61

A-Size 7/8" Thread - Power

- Accepts 14 AWG conductors
- 3 and 4-pin
- 600 V, 15 A



62

TC - Power Cable

- PVC or TPE
- Tray, exposed run and direct burial rated
- FT4 flame retardant
- UV, sunlight and oil resistant
- Shielding available
- Superior tensile and mechanical strength



63

D-Size 1 3/8" Thread - Power

- Accepts 10, 12 and 14 AWG conductors
- 3 and 4-pin
- 600 V, 15-30 A



A-Size – Powerfast

D-Size – Powerfast



64

PROFIBUS®-DP D-Sub Connector

- Integrated terminating switch
- Right angle and master connection option
- 250 V, 5 A



65

PROFIBUS®-DP Cable

- Meets requirements of EN50170-2-2:1996 for communications up to 12 Mbaud
- PVC, PUR and TPU cable jackets
- Braided over foil shield
- Aluminium armor option



66

M12 PROFIBUS®-DP Connectors

- 5-pin
- 250 V, 4 A
- Standard reverse key
- Shield-tied to coupling nut

67

RJ45 Connector

- For Ethernet connections
- 42 V, 1.5 A
- Shielded and unshielded options



68

Ethernet Cable, 8-wire

- Meets TIA/EIA 568-B, 2 category 5e cable for 10 and 100 Base-T Ethernet
- TPE jacket for use both indoor and outdoor
- Oil, moisture, weather and weld spatter resistant
- Flex ratings available
- -40 to +80 °C
- Other configurations available



69

M12 Bulkhead Connector

- 8-pin
- 60 V, 2 A





70

7/8" Thread

- 5 pin
- 600 V, 9 A



71

DeviceNet™ Cable, 5-wire

- Meets ODVA requirements of type I (thin), type II (thick), and type III (mid)
- PVC, TPU and TPE cable jacket
- Approval options for your specific application, including exposed run and direct burial



72

M12 Thread DeviceNet™

- 5-pin
- 250 V, 4 A

73

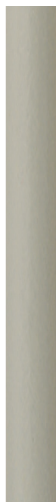
Turck Sensor

- Connected to commercial style connector



74

Cable Jacket Options for Any Environment



75

Commercial Style Connector

- Connected to Turck sensor



Custom Solutions

Custom Solutions

Turck Sensor with Weldguard® Protective Face

- Weld slag/spatter resistant
- Integral extension cable with silicone tubing



Protective Silicone Tubing with Heat Shrink to Cable

- Weld slag/spatter resistant



M8 Thread

- Connected to Turck sensor
- Multiple connector styles available



79

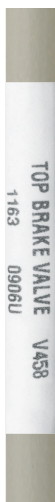
Valve Connectors

- 8 mm to 18 mm contact spacing
- M8 to 7/8" connector extensions
- Field wireable styles
- Custom print labels



80

Private Labeling on Cables



81

Insulated Ferrules

- Multiple color and AWG size options
- Provides cleaner connection
- Private labeling on conductors



Approvals

- FM, UL, CSA and ATEX approvals available



Heat Shrinking of Conductors



Ring Terminal and Ferrules

- Any combination



85

D-Sub Molded or Assembled Connectors

- Connected to Turck connector
- 9, 15 and 25-pin



86

Cable Jacket Diameters Range from 2.8 mm to 20.0 mm

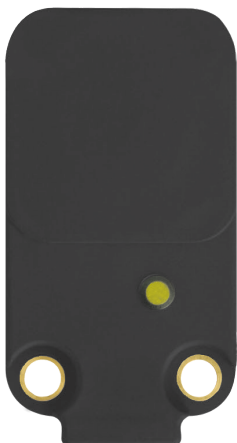


87

M23 Connector

- Connected to D-Sub Connector





Turck Sensor

- Connected to automotive style connector

CANbus Data Network Cable

- J1939-11
- J1939-15



Automotive Style Connector

- Stabilizing pin
- Connected to Turck sensor



91

Turck Sensor

- Connected to automotive style connector



92

Cable Range

- 2 to 27 Conductors
- Braided and Foil Shielding Available



93

Automotive Style Connector

- Connected to Turck sensor





94

Turck Sensor

- Custom pad printing and color
- Connected to automotive style connector

95

Reelfast® Spooled Cable Available in Any Length



96

Automotive Style Connector

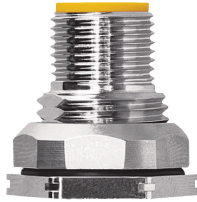
- Connected to Turck sensor



97

M12 Receptacles

- Turck offers over 40 styles of M12 receptacles
- Front mount, rear mount, solder cups, PCB mount and more
- Connected to commercial style connector



98

Ferrite Tubing

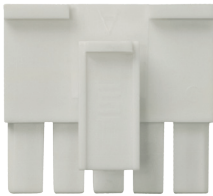
- EMI/RFI protection



99

Commercial Style Connector

- Connected to Turck M12 receptacle



100



Closure Cap

- Nickel plated brass or stainless steel
- For cordsets or receptacles
- With or without lanyards

101



Closure Cap Lanyards

- Available pre-attached to cable jacket

102



Fork Terminals

- Connected to Turck connector
- Private labeling on conductors

103

Nylon Coupling Nut

- Turck offers nickel plated brass, nylon and 316 stainless steel coupling nut options



104

Turck Can Process Your Cable



105

USB Connector

- Connected to Turck connector



Custom Solutions

Custom Solutions

Multiple Connector Mold Colors

- Yellow
- Black
- Grey
- Red
- Blue
- Green



Custom Cable Colors

- Yellow
- Black
- Grey
- Red
- Blue
- Green



Pigtail Option



109

M12 Connector to Splitter

- Choose from integral connector or connector with extension cable



110

3 Branch Molded Splitter

- 2 and 4 branch options
- LED options
- Standard, series or parallel wiring
- Custom hot stamp printing
- Coil Cord



111

Multiple Thread Types and Mold Colors

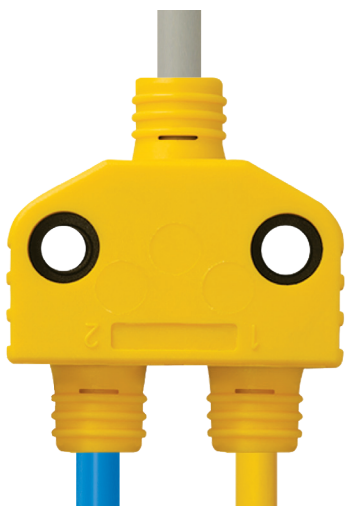
- 1/2" and M12 threads
- M12 thread reverse key (B-code)





Right Angle Connector

- Right angles available in all thread types



2 Branch Molded Splitter

- 3 and 4 branch options
- LED options
- Standard, series or parallel wiring



Molded on Automotive Style Connectors

- Multiple cable jacket colors
- Connected to Turck splitter

115

Assembled Amp Connector

- Connected to Turck connector



Custom Solutions

116

Halogen Free Cable

- Abrasion resistant
- UL 1061/CSA FTI



117

PVC Plug Body

- Excellent resistance to wash down chemicals
- Available in multiple connector styles



Custom Solutions

Weld Protection

- Weld slag resistant silicone tubing
- PTFE coated coupling nut
- LED options



Silicone Tubing

- Excellent weld slag resistance



Weld Protection

- Weld slag resistant silicone tubing
- PTFE coated coupling nut



121

Expandable Fiberglass Sleeving

- Abrasion, moisture, cut-through and chemical resistant
- -55 to +200 °C
- Expandable to protect Turck connector end



122

Expandable Fiberglass Sleeving

- Abrasion, moisture, cut-through and chemical resistant
- -55 to +200 °C



123

AC Wall Plug

- Connected to Turck connector



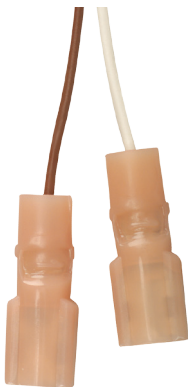


Stainless Steel Coupling Nut

- Turck offers 316 stainless steel, nickel plated brass and nylon coupling nut options



Over 1,200 Different Cable Types



Insulated Spade Terminals

- Connected to Turck connector

127

Insulated Ferrules

- Private labeling on conductors
- Connected to M16 connector



128

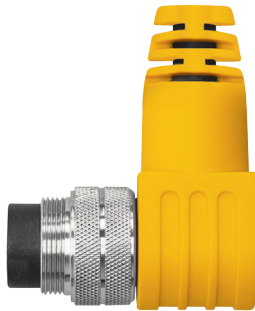
Cable Gland



129

M16 Thread

- Available in 5-8, 12, 14 and 19-pin
- Insulated ferrules connected on opposite end





130

Hybrid Cordsets

- Combine multiple thread sizes in one cordset



131

Mix and Match

- M23 thread on one end, M16 thread on the other end



132

Hybrid Cordsets

- Combine multiple thread sizes in one cordset

133

M16 Connectors



Custom Solutions

134

Drop Tee

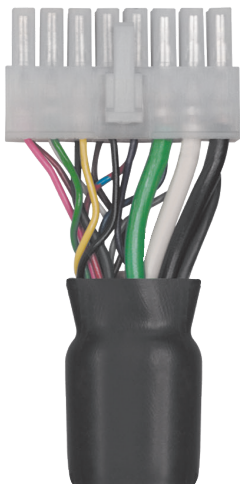


135

Commercial Style Connector



Custom Solutions



136

Commercial Style Connector

137

Multiple Cable Branches

- Two cables from commercial style connector to two different receptacle types



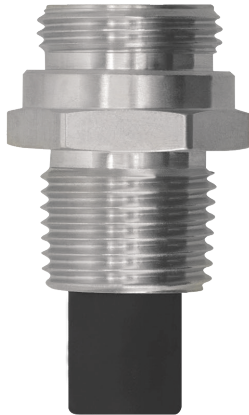
138

Combine Multiple Receptacles

- Numerous receptacle styles in all thread sizes

139

Overmolded Receptacle



Process Automation

140

Process Connectivity

- 2-wire analog or HART control circuits
- Additional analog or discrete control circuits
- NAMUR circuits
- Extremelife®-60 cable
- UL ITC, PLTC and TC listings
- Exposed run and direct burial



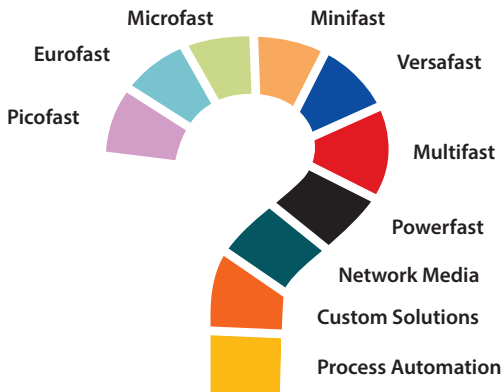
141

M23 Home Run Connector with Set Screw Locks

- For Class I, Division 2 hazardous locations
- Render a connection not normally arcing



Process Automation



CONNECT IT YOUR WAY




Our experienced engineers are ready to assist you.

1-800-544-7769
www.comoso.com

NOTES

A large grid of graph paper for taking notes. The grid consists of 20 columns and 40 rows of small squares, providing a structured space for writing and drawing.

TURCK



28 subsidiaries and over
60 representations worldwide!

Printed in USA

©2016 by Turck Inc. All rights reserved. No part of the
publication may be reproduced without written permission.
www.comoso.com

B2102 C 09/16

www.turck.com