



1

2

3

4

5

6

7

8

Well Conceived



The häwa group has established itself as an innovative and highly competent supplier to machinery and facility equipment companies in the electrical and electronic industries, far beyond the borders of Europe. We develop and deliver standard and custom solutions for a great variety of applications - using solid construction and economical designs.

Our many decades of experience in the enclosure business, together with close cooperation with end users, guarantee optimal benefits for our customers. Our comprehensive services range from initial discussions and concept development, to design, construction, assembly, and finally, detailed logistical support. We create value-added solutions for our customers through problem solving and reliable

partnerships during the development. 'Made in Germany' is the yardstick in quality for us. We are a highly motivated and qualified team of over 400 associates who together with our exclusive business partners serve an ever increasing range of international customers.

	Cabinets Systems	Free Standing and Modular Cabinets in Steel and Stainless Steel, PC Cabinets
	IT Solutions	Server and Distribution Racks, Cabinets and Enclosures
	Enclosures	Wall Mount Enclosures, Junction Boxes and Small Housings in Steel, Stainless Steel, Plastic and Aluminum
	Fire Protection	Safety in Steel: Maintaining Function and Escape Safety
	Thermal Components	Heating, Ventilating and Cooling
	Cable Ducts, Accessories	Enclosed Cable Ducts, Complete Cabinet Accessories
	X-Frame	Machine enclosures, machine frames
	Tools	Portable Tools, Shop Equipment and Factory Automation

CERTIFICATE

häwa
häwa GmbH & Co. KG
Industriestraße 12
D-50489 Wess
with the branches:
Crimmitschau, Dinklage and Meisel

has been certified and has proven, that the management system complies with:

DIN EN ISO 9001:2008

This certificate is valid for the following activities:
Development and distribution of metal boards

The certification process was carried out according to requirements of ISO 9001:2008 and ISO 9001 according to TUG System

File No. 043893 0014 Certification: 0808
The certificate is valid until 08/2011

Original of this certificate can be found in the company files.
Date of issue: 08/2008

Responsible for the certification: TÜV SÜD Certification GmbH, TÜV SÜD Center for Certification, 85354 Freising, Germany

HLT Pendant Arm System

	page
	General information
	HLT-Pendant Arm System
	HLT Accessories


HST 50 / HST 60 / HST 80

	page
	General information
	HST50 / HST60 / HST80
	26-27

Control Cabinets

	page
	General information
	häwa lightweight enclosures
	häwa control enclosures
	Note: Additional enclosures can be found in the häwa Enclosure-Catalog

Product finder

	page
	Alphabetical table of contents
	Numerical table of contents

HLT Pendant Arm System

Designed specifically for the human-machine interface, the hāwa-system, with its vast variety of components, guarantees optimum configuration possibilities - with design and functionality going hand in hand perfectly.

Technical Parameters

- Robust pendant arm system out of lightweight extruded aluminum profile offers high flexibility
- Section tube 62 x 85 mm (2.44" x 3.35")
- Load up to 175 lbs at 40 inches (80 kg at 1 m)
- Aluminum profile length up to 2,000 mm (approx. 6.5')
- Tilt & angle correction
- Color: Aluminum profile similar to RAL 7035 structured (light gray)
Components similar to RAL 7016 structured (anthracite gray)
- High flexibility
- Connections direct or with housing-console per VESA-Standard
- Connections to commercially available coupling holes available with adapter plates



- High carrying capacity of pendant arm with or without joints
- Protection class IP54 DIN EN 60529 / NEMA 12
- Material: Extruded aluminum tube and cast aluminum
- The system offers a continuous, load-dependent incline variation

“One source for control cabinet, pendant arm, and enclosure”



HLT Pendant Arm System

HLT Lift S



Product Description

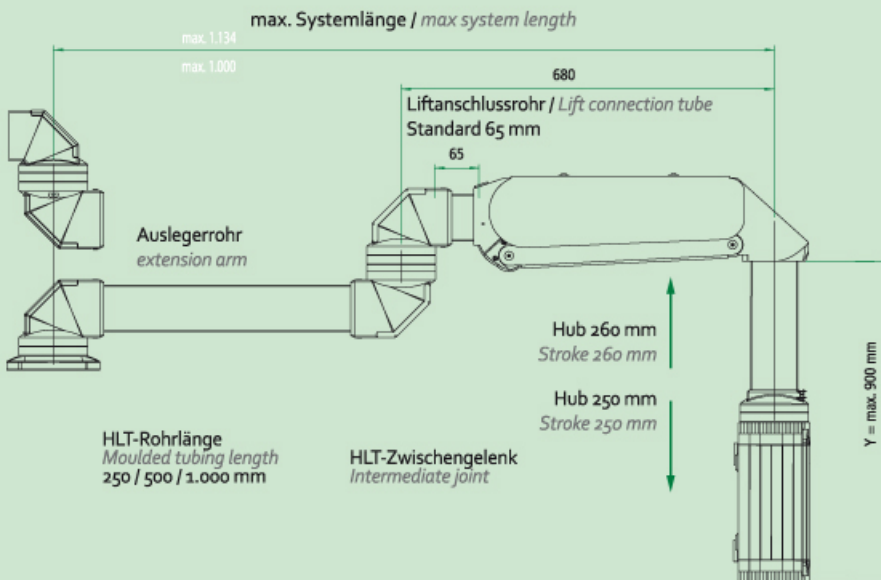
- Lift for control boxes with internal cable ducting system; continuously adjustable
- Automatic locking of vertical stroke in each position
- Unlocking by use of push button (push button normally is integrated in operator panel)
- Stroke limiter adjustable upwards in three steps (0°, 20°, 40°), and downwards

continuously

- Designed to connect to the HLT Pendant Arm System
- Extension arm length: 548 mm / 21.56 inch
- Stroke upwards: 260 mm / 10.24 inch
- Stroke downwards: 250 mm / 9.84 inch
- Max. cable duct: 43 mm x 16 mm / 1.69 x 0.63 inch
- Standard color: RAL 7016 / RAL 7035 (different colors on request)

Description	Order No.
HLT Lift S	7595-760x-xx-01

Technical Information



Weight	max. System length	
	without joint	with joint
5-10 kg	2000 mm 78.74 inch	2000 mm 78.74 inch
7-13 kg	2000 mm 78.74 inch	2000 mm 78.74 inch
13-21 kg	2000 mm 78.74 inch	2000 mm 78.74 inch
18-28 kg	2000 mm 78.74 inch	1800 mm 70.86 inch
26-37 kg	1700 mm 66.92 inch	1500 mm 59.05 inch
36-52 kg	1300 mm 51.18 inch	1100 mm 43.30 inch
45-60 kg	1150 mm 45.27 inch	1000 mm 39.37 inch

Order No.

Configure:

- Choose your design:
 - 1 = Standard hanging
 - 2 = Desk mounting
 - 3 = Standard hanging; stroke limiter
 - 4 = Desk mounting; stroke limiter
- e.g. 7595-7601-xx-01

- Choose length of lift connection tube
 - 1 = 65 mm Standard
 - 2 = 100 mm
 - 3 = 200 mm
 - 4 = 300 mm
 - 5 = 400 mm
 - 6 = 500 mm
- e.g. 7595-7601-1x-01

- Choose your loading capacity:
 - 1 = 5-10 kg
 - 2 = 7-13 kg
 - 3 = 13-21 kg
 - 4 = 18-28 kg
 - 5 = 26-37 kg
 - 6 = 36-52 kg
 - 7 = 45-60 kg
- e.g. 7595-7601-11-01

HLT Lift L

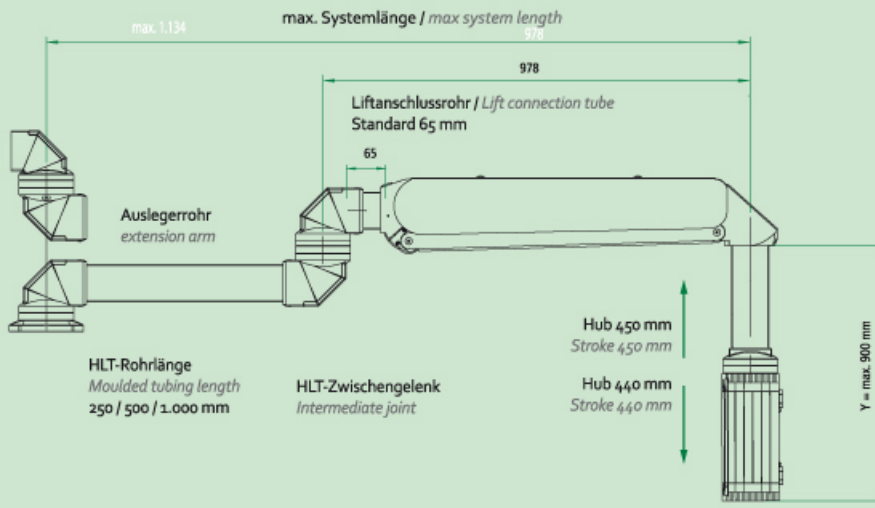


Product Description

- Lift for control boxes with internal cable ducting system; continuously adjustable
- Automatic locking of vertical stroke in each position
- Unlocking by use of push button (push button normally is integrated in operator panel)
- Stroke limiter adjustable continuously upwards/downwards
- Designed to connect to the HLT Pendant Arm System
- Extension arm length: 846 mm / 33.31 inch
- Stroke upwards: 450 mm / 17.71 inch
- Stroke downwards: 440 mm / 17.32 inch
- Max. cable duct: 43 mm x 16 mm / 1.69 x 0.63 inch
- Standard color: RAL 7016 / RAL 7035 (different colors on request)

Description	Order No.
HLT Lift L	7595-768x-xx-01

Technical Information



Weight	max. System length	
	without joint	with joint
5-10 kg	2000 mm 78.74 inch	2000 mm 78.74 inch
7-13 kg	2000 mm 78.74 inch	2000 mm 78.74 inch
13-21 kg	2000 mm 78.74 inch	2000 mm 78.74 inch
18-28 kg	1900 mm 74.80 inch	1650 mm 64.96 inch
26-37 kg	1600 mm 62.99 inch	1400 mm 55.11 inch
36-52 kg	1200 mm 47.24 inch	1050 mm 41.33 inch
45-60 kg	1000 mm 39.37 inch	950 mm 37.40 inch

Order No.

Configure:

- Choose your design:
 - 1 = Standard hanging
 - 2 = Desk mounting
 - 3 = Standard hanging; stroke limiter
 - 4 = Desk mounting; stroke limiter
- e.g. 7595-7601-xx-01

• Choose length of lift connection tube

- 1 = 65 mm Standard
 - 2 = 100 mm
 - 3 = 200 mm
 - 4 = 300 mm
 - 5 = 400 mm
 - 6 = 500 mm
- e.g. 7595-7601-1x-01

• Choose your loading capacity:

- 1 = 5-10 kg
 - 2 = 7-13 kg
 - 3 = 13-21 kg
 - 4 = 18-28 kg
 - 5 = 26-37 kg
 - 6 = 36-52 kg
 - 7 = 45-60 kg
- e.g. 7595-7681-11-01

HLT Pendant Arm System

HLT Set-up Joint



Product Description

- For horizontal swinging of pendant arm
- Variable turning restrictions in 30°-increments (Factory set: 150° / 150°)
- Upside down installation possible
- Tilt & angle correction
- Cover detachable for easy installation
- Color: Similar RAL 7016 structured (anthracite gray)

Technical Data

Further technical information → below

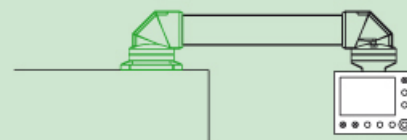
Note

- * Socket eap screw

By changing the position, the swivel range can be adjusted in 30° increments.

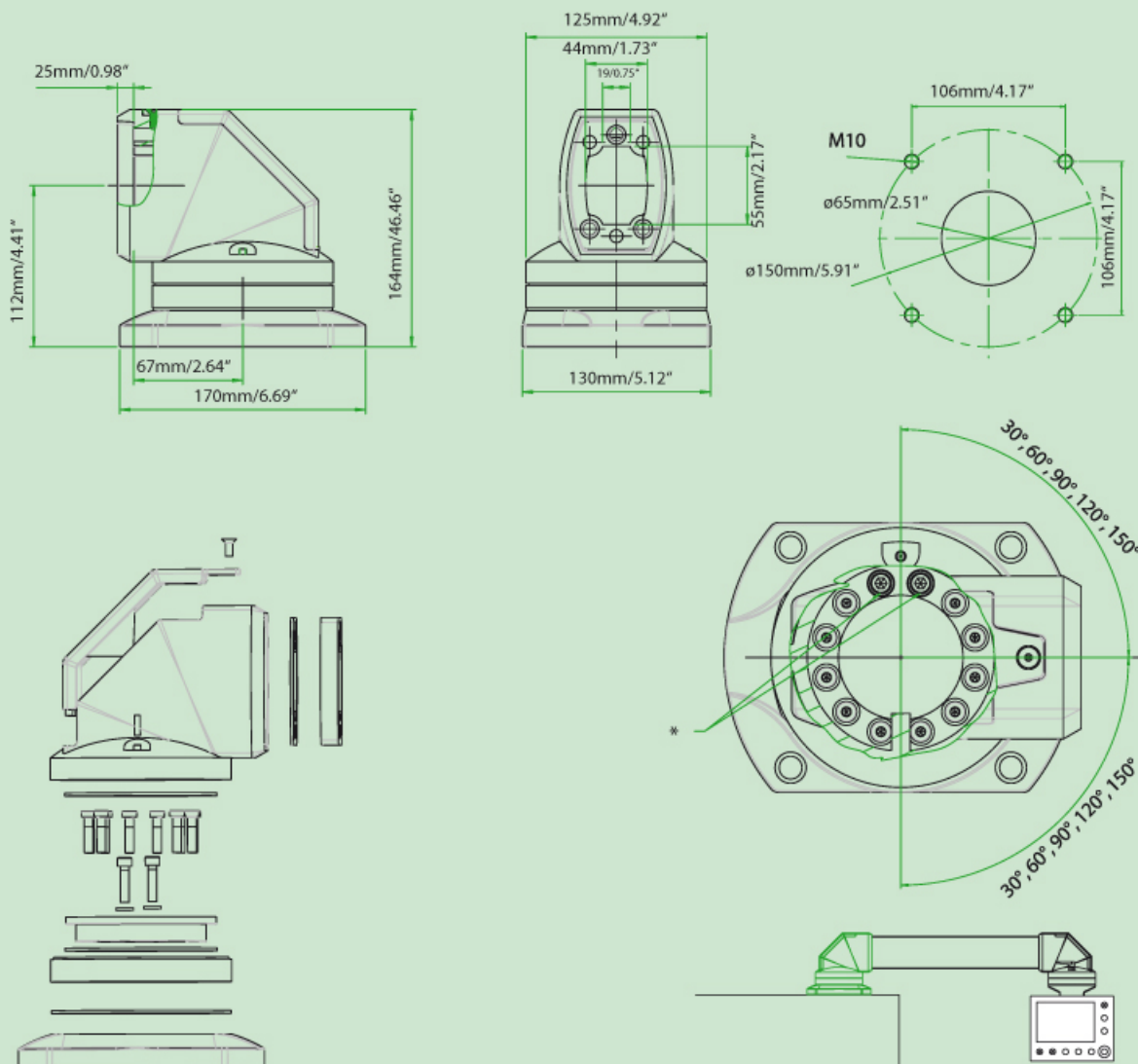
Accessories

- Light adapter → page 24



Description	Weight		Order No.
	kg	lbs	
HLT Set-up Joint	3.2	7.06	7595-7401-01-01

Technical Information



HLT Wall Joint (horizontal)



Product Description

- For horizontal swinging of pendant arm
- Variable truning restrictions in 30°-increments (Factory set: 150° / 150°)
- Upside down installation possible
- Tilt & angle correction
- Cover detachable for easy installation
- Color: Similar RAS 7016 structured (anthracite gray)

Technical Data

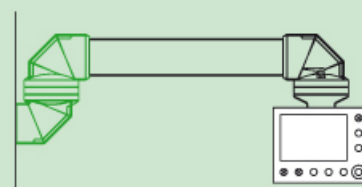
Further technical information → below

Note

* Socket eap screw
By changing the position, the swivel range can be adjusted in 30° increments.

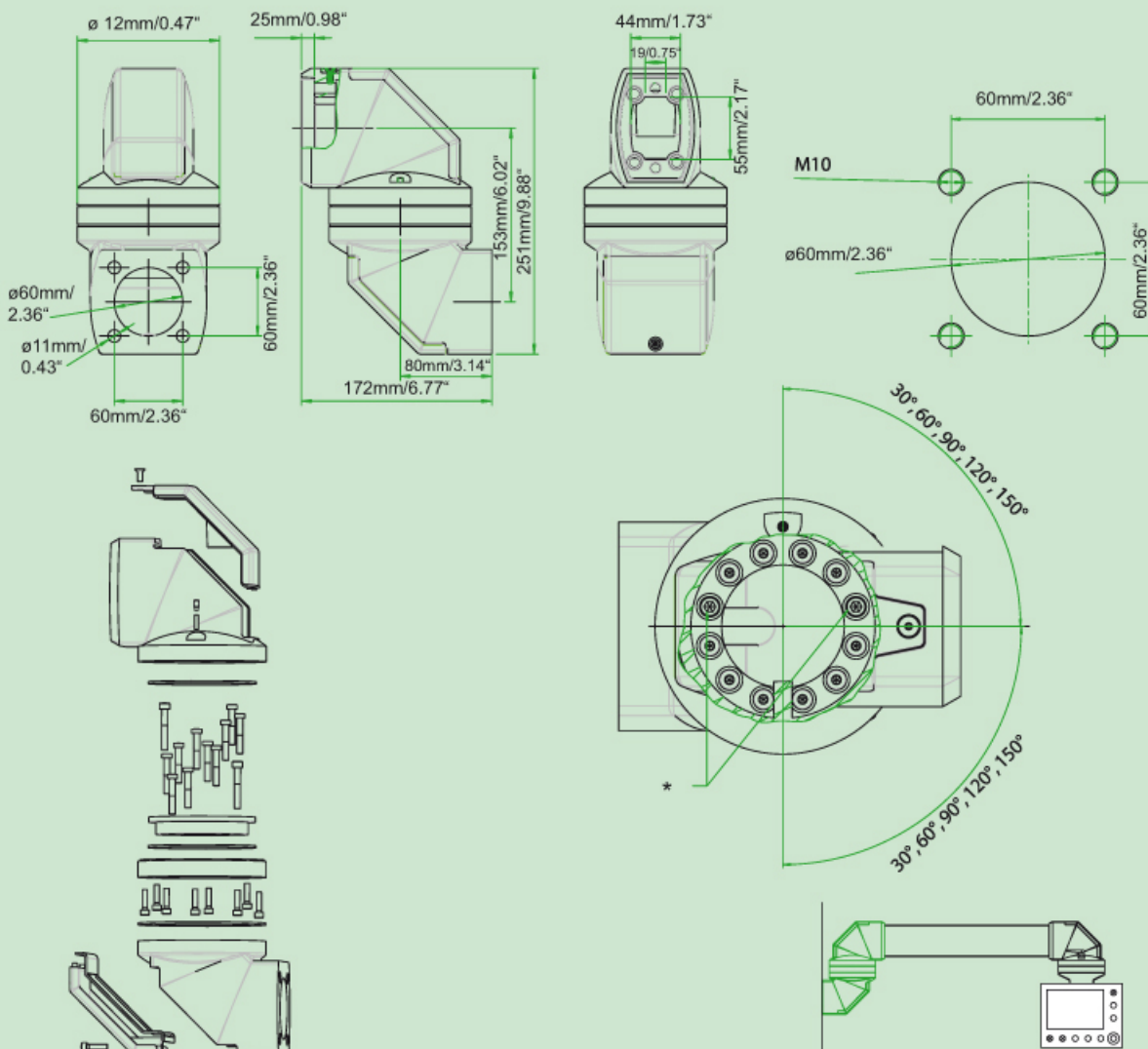
Accessories

- Light adapter → page 24



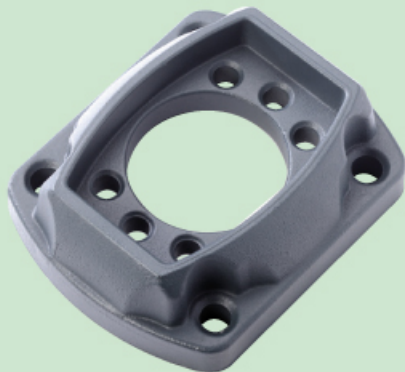
Description	Weight		Order No.
	kg	lbs	
HLT Wall Joint (horizontal)	4.1	9.04	7595-7401-02-01

Technical Information



HLT Pendant Arm System

HLT Base Bracket / Wall Flange

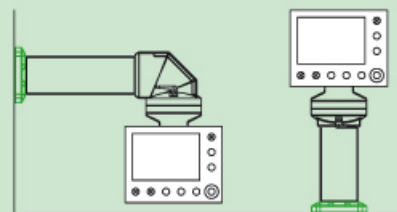


Product Description

- For connection of aluminum profile to vertical or horizontal surfaces
- Tilt & angle correction
- Cover detachable for easy installation
- Color: Similar RAL 7016 structured (anthracite gray)

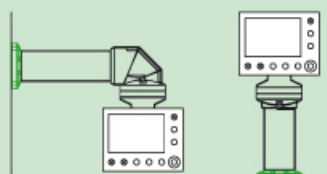
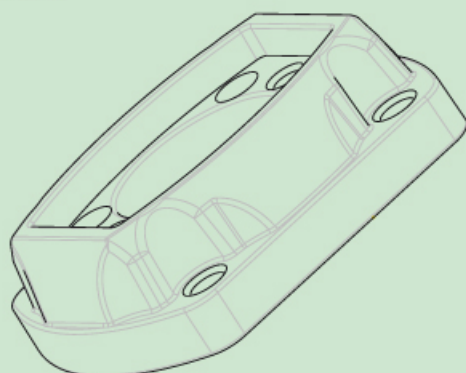
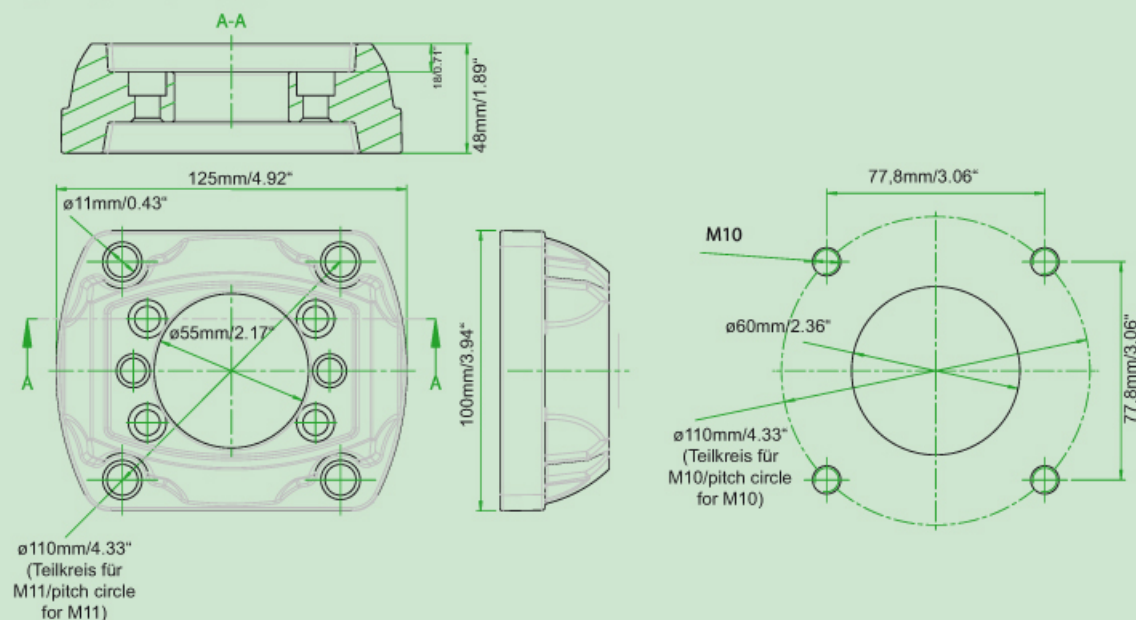
Technical Data

Further technical information → below



Description	Weight		Order No.
	kg	lbs	
HLT Base Bracket / Wall Flange	0.6	1.32	7595-7401-06-01

Technical Information



HLT Intermediate Joint



Product Description

- For connection of two aluminum profiles and horizontal swinging of pendant arm
- Variable turning restrictions in 30°-increments (Factory set: 150° / 150°)
- Upside down installation possible
- Tilt & angle correction
- Cover detachable for easy installation
- Color: Similar RAL 7016 structured (anthracite gray)

Technical Data

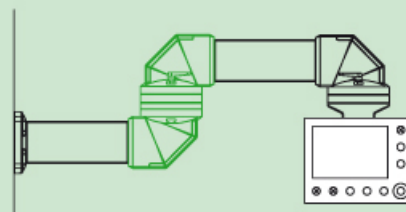
Further technical information → below

Note

* Socket cap screw
By changing the position, the swivel range can be adjusted in 30° increments.

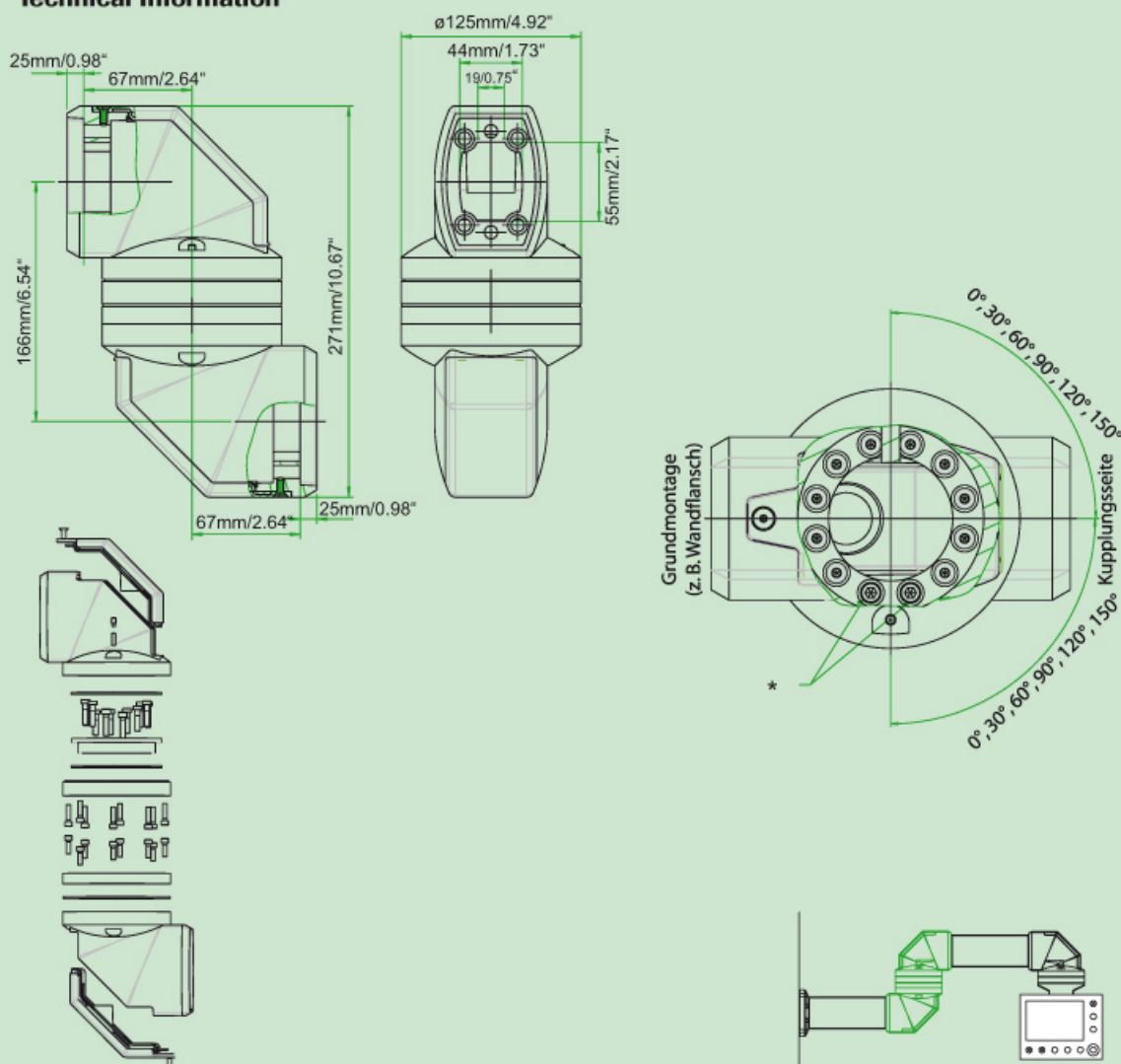
Accessories

- Light adapter → page 24



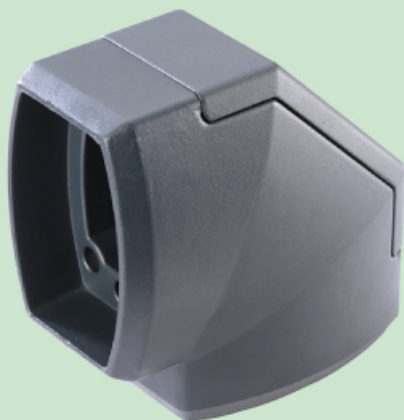
Description	Weight		Order No.
	kg	lbs	
HLT Intermediate Joint	4.9	10.8	7595-7401-03-01

Technical Information



HLT Pendant Arm System

HLT Elbow



Product Description

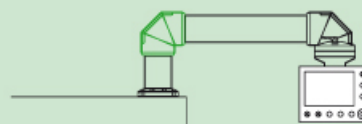
- For connection of one horizontal and one vertical aluminum profile
- Cover detachable for easy installation
- Color: Similar RAL 7016 structured (anthracite gray)

Technical Data

Further technical information → below

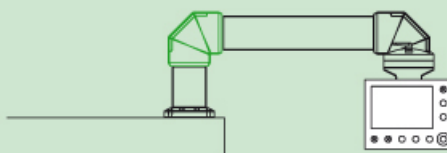
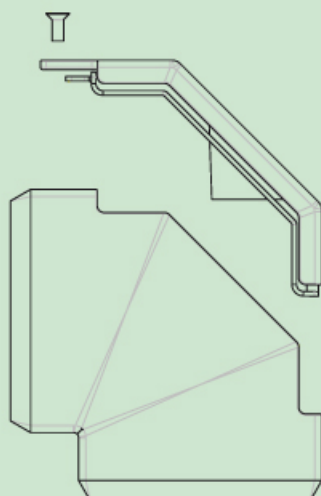
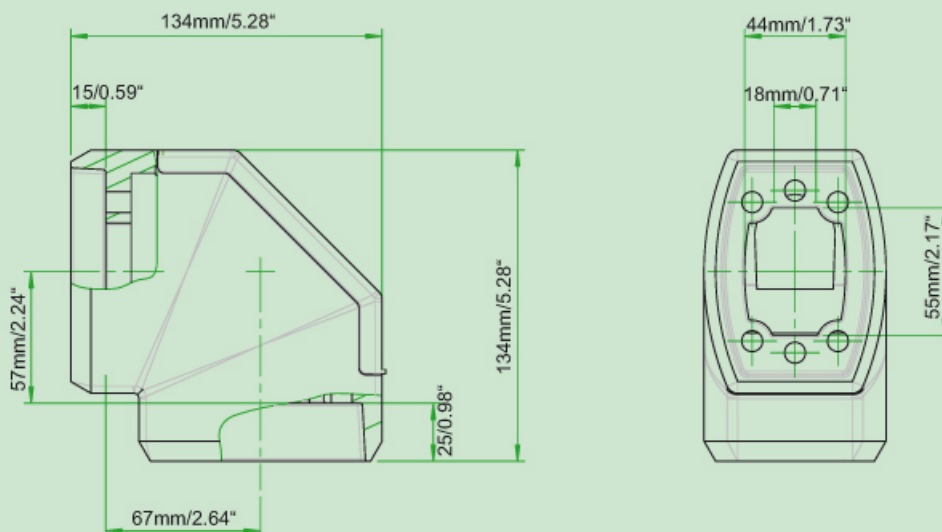
Accessories

- Light adapter → page 24



Description	Weight		Order No.
	kg	lbs	
HLT Elbow	1.4	3.09	7595-7401-04-01

Technical Information



HLT Elbow Joint



Product Description

- For connection of a horizontal aluminum profile to an enclosure
- Turn area 170° / 170°
- Turning restrictions 90° / 90° through screws (factory set: 170° / 170°)
- Console assembly possible
- Color: Similar RAL 7016 structured (anthracite gray)

Technical Data

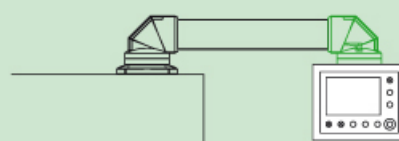
Further technical information → below

Note

* Socket cap crew M5x12
The swivelrange can be limited to 90°/90° by screwing in the socket cap screw.

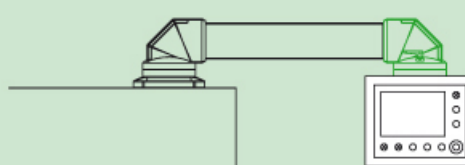
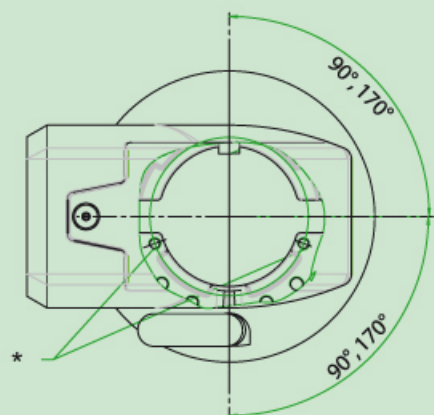
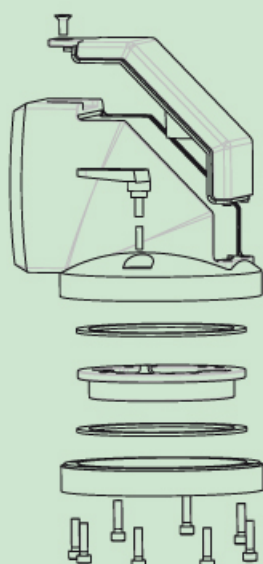
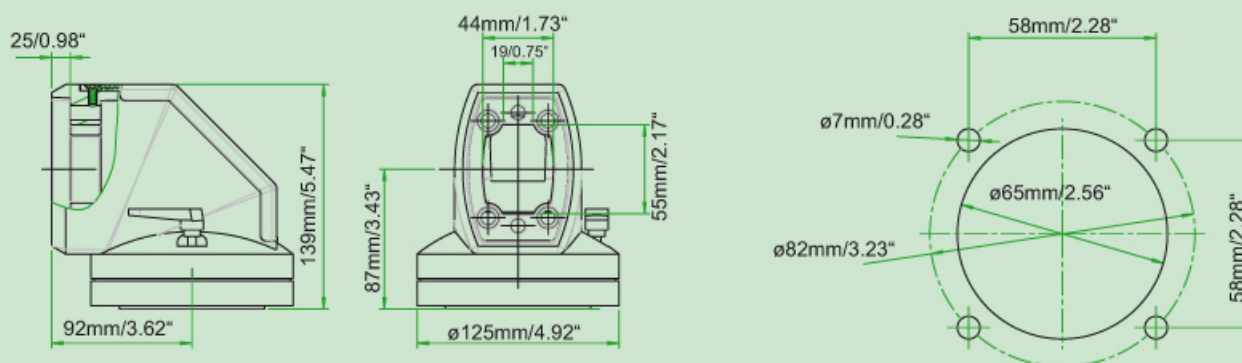
Accessories

- HLT Incline Adapter → page 17
- Light adapter → page 24
- Cable protection disk → page 25



Description	Weight		Order No.
	kg	lbs	
HLT Elbow Joint	2.4	5.29	7595-7401-08-01

Technical Information



HLT Pendant Arm System

HLT Narrow Flange Elbow Joint



Product Description

- For connection of a horizontal aluminum profile to an enclosure of narrow width
- Turn area 170° / 170°
- Turning restrictions 90°/90° through screws (factory set: 170° / 170°)
- Console assembly possible
- Color: Similar RAL 7016 structured (anthracite gray)

Technical Data

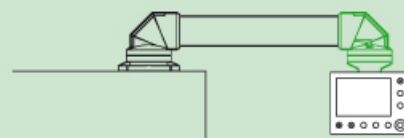
Further technical information → below

Note

* Socket cap crew M5x12
The swivelrange can be limited to 90°/90° by screwing in the socket cap screw.

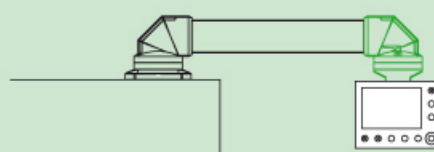
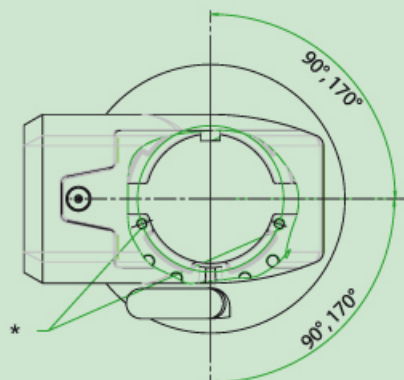
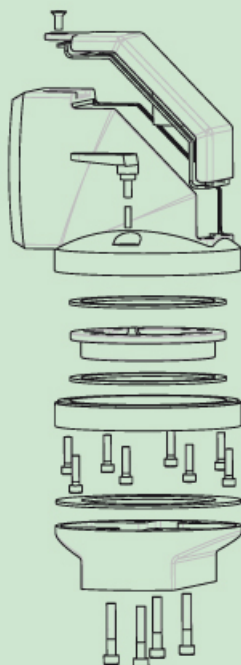
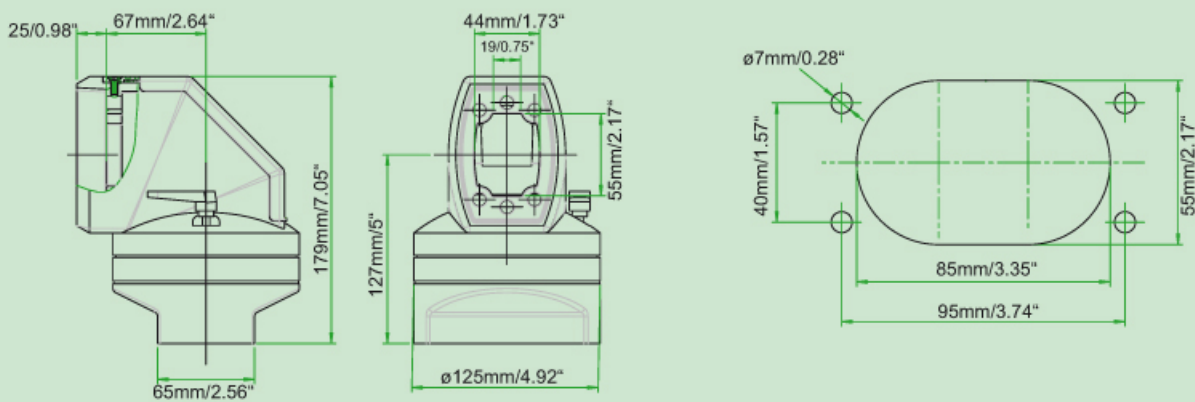
Accessories

- Light adapter → page 24



Description	Weight		Order No.
	kg	lbs	
HLT Narrow Flange Elbow Joint	2.8	6.17	7595-7401-09-01

Technical Information



HLT Joint



Product Description

- For connection of a vertical aluminum profile to an enclosure
- Turn area 170° / 170°
- Turning restrictions 90° / 90° through screws (factory set: 170° / 170°)
- Console assembly possible
- Color: Similar RAL 7016 structured (anthracite gray)

Technical Data

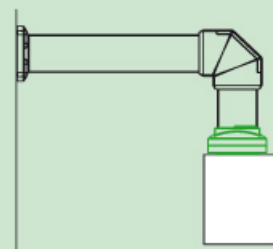
Further technical information → below

Note

* Socket cap crew M5x12
The swivelrange can be limited to 90°/90° by screwing in the socket cap screw.

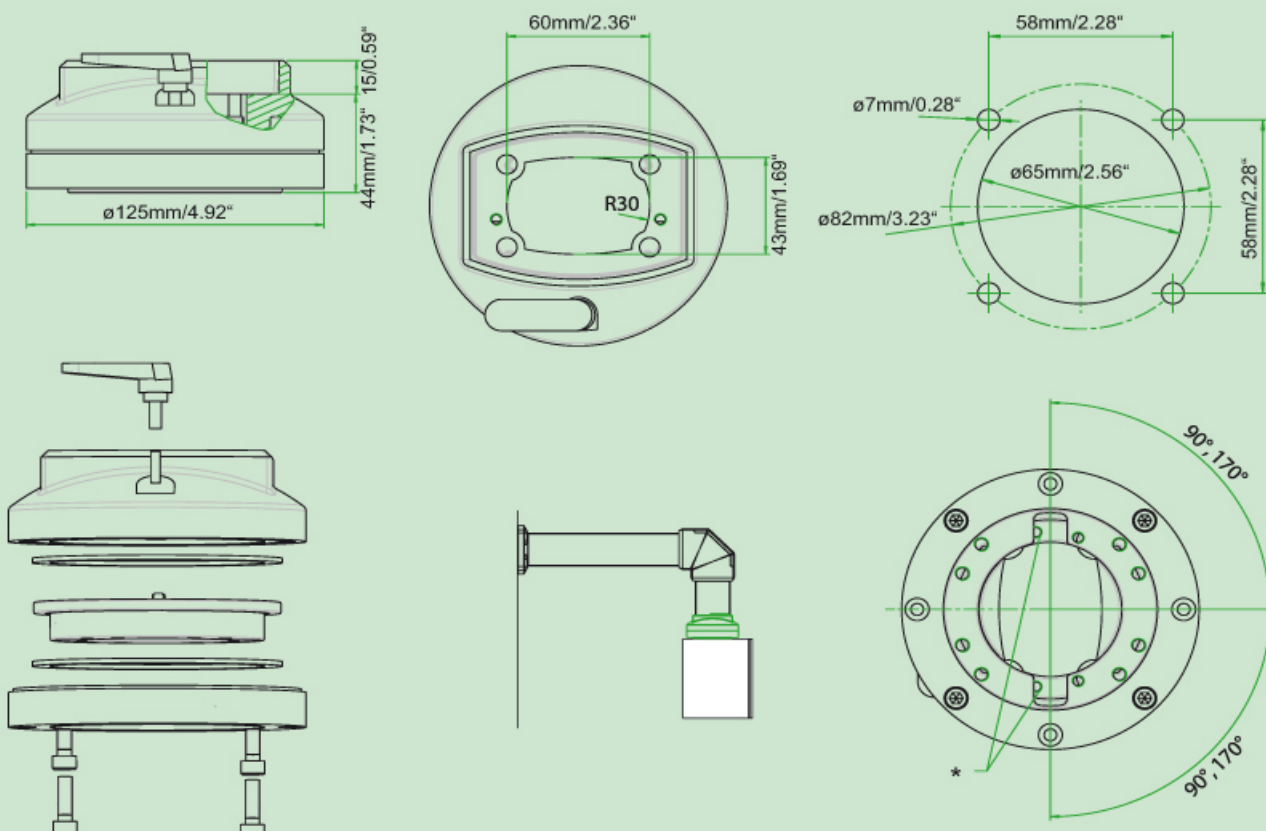
Accessories

- HLT Incline Adapter → page 17
- Cable protection disk → page 25



Description	Weight		Order No.
	kg	lbs	
HLT Joint	1.5	3.31	7595-7401-05-01

Technical Information



HLT Pendant Arm System

HLT Narrow Flange Joint



Product Description

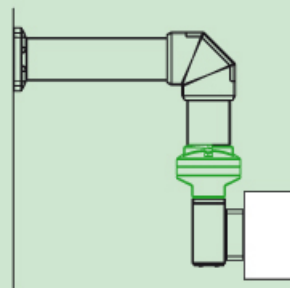
- For connection of a vertical aluminum profile to an enclosure of narrow width
- Turn area 170° / 170°
- Turning restrictions 90° / 90° through screws (factory set: 170° / 170°)
- Color: Similar RAL 7016 structured (anthracite gray)

Technical Data

Further technical information → below

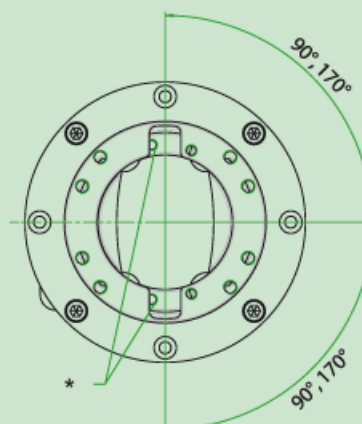
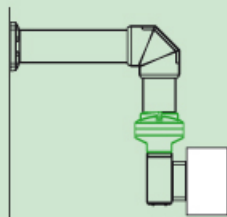
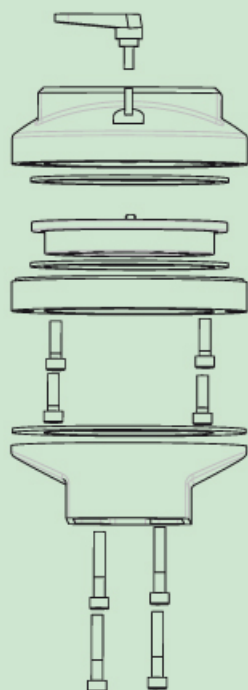
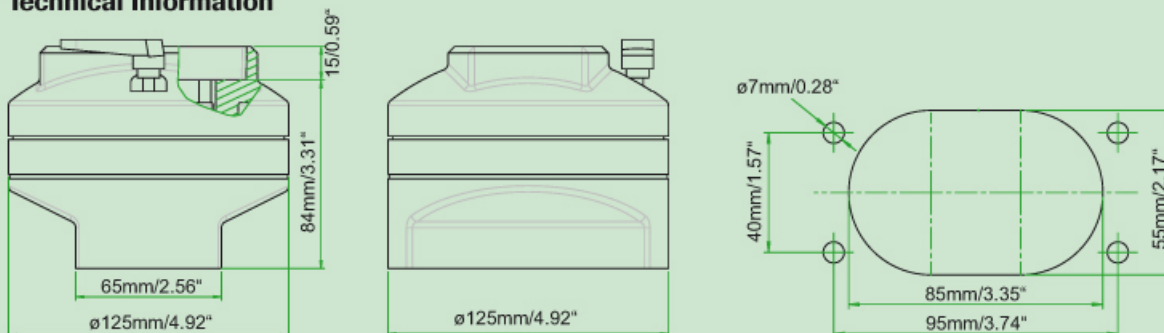
Note

* Socket cap crew M5x12
The swivelrange can be limited to 90°/90° by screwing in the socket cap screw.



Description	Weight		Order No.
	kg	lbs	
HLT Narrow Flange Joint	1.9	4.19	7595-7401-07-01

Technical Information



HLT Incline Adapter

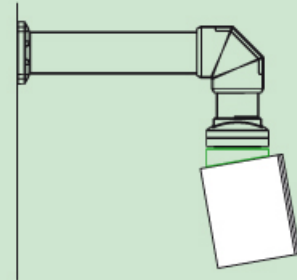


Product Description

- For a fixed connection of enclosure and joint or elbow joint
- 10° incline
- Color: Similar RAL 7016 structured (anthracite gray)

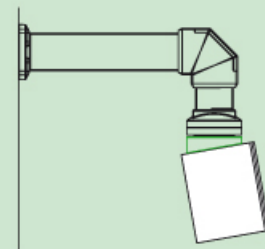
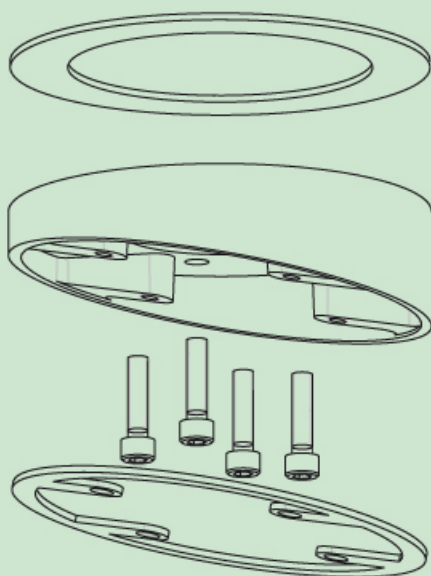
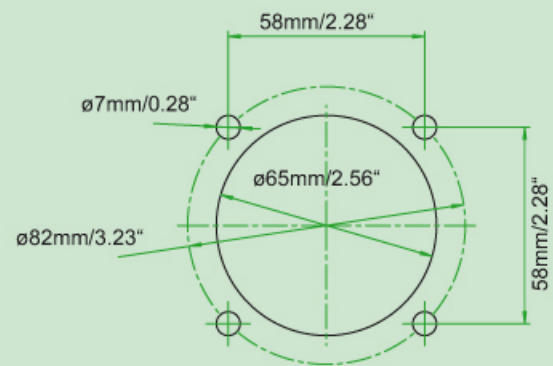
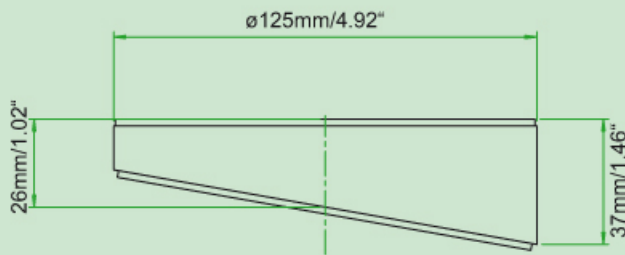
Technical Data

Further technical information → below



Description	Weight		Order No.
	kg	lbs	
HLT Incline Adapter	0.3	0.66	7595-7401-10-01

Technical Information



HLT Pendant Arm System

HLT Narrow Flange Incline Adapter

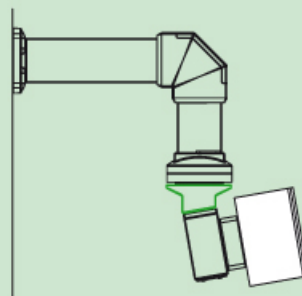


Product Description

- For a fixed connection of an enclosure of narrow width an joint or elbow joint
- 10° incline
- Color: Similar RAL 7016 structured (anthracite gray)

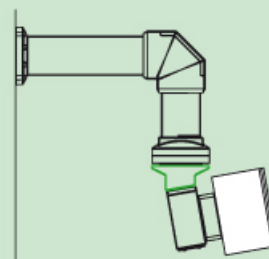
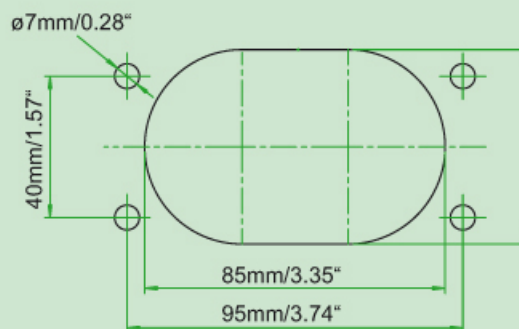
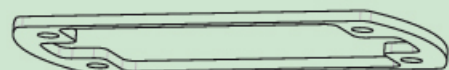
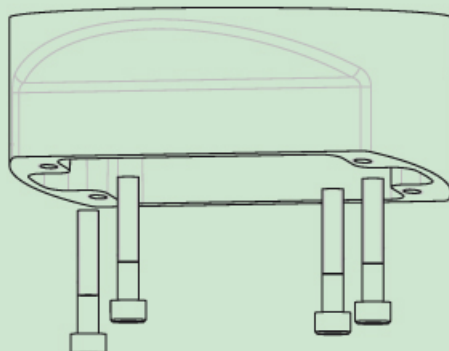
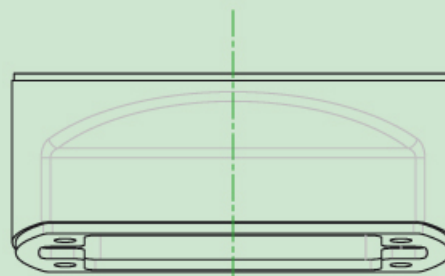
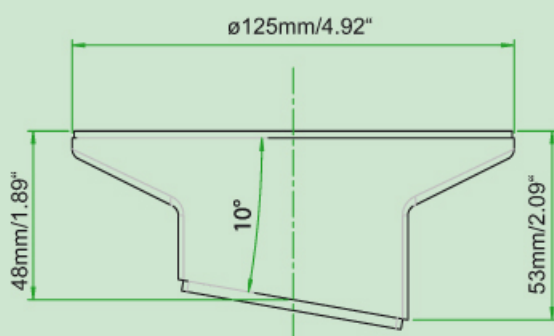
Technical Data

Further technical information → below

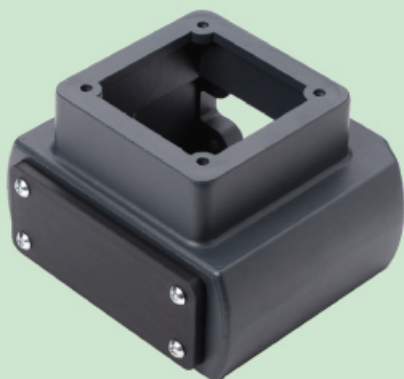


Description	Weight		Order No.
	kg	lbs	
HLT Narrow Flange Incline Adapter	0.5	1.1	7595-7401-11-01

Technical Information



HLT Enclosure Adapter VESA



Product Description

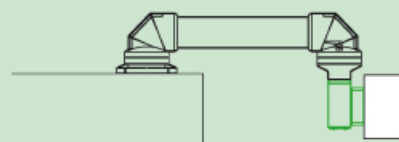
- For a fixed connection of an enclosure or monitor with a narrow flange joint or a narrow flange elbow joint
- Connection to the VESA 75 hole pattern
- Connection to narrow flange incline adapter (10°)
- Cover detachable for easy installation
- Cable guiding directly or indirectly through available cable guiding systems, like e.g. icotek (factory set: Dummy panel BP 16 icotek)
- Color: Similar RAL 7016 structured (anthracite gray)

Technical Data

Further technical information → below

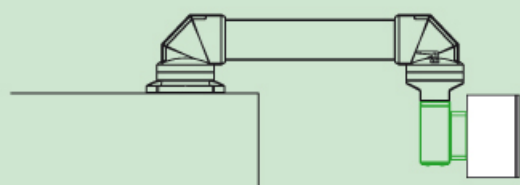
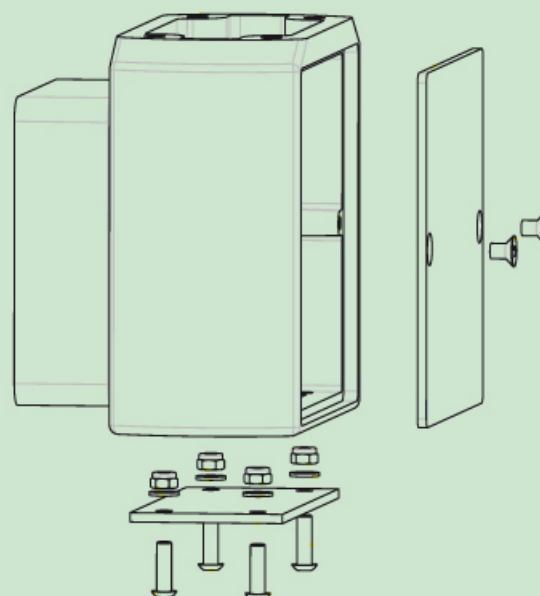
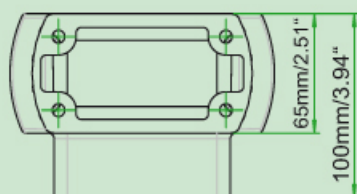
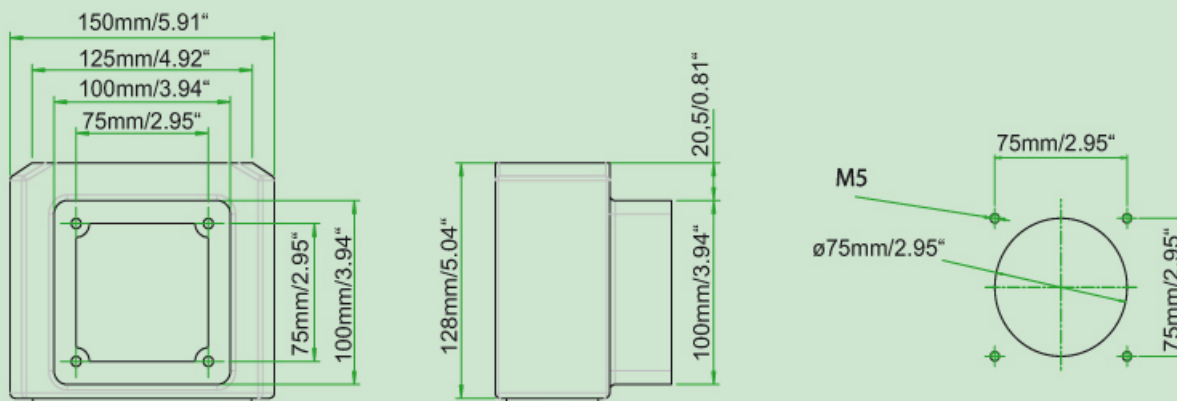
Accessories

- VESA 100 adapter plate → page 25



Description	Weight		Order No.
	kg	lbs	
HLT Enclosure Adapter VESA	1.2	2.65	7595-7401-12-01

Technical Information



VESA= worldwide standard for interface between pendant arm and monitor
icotec=Cable connector, cable glends

HLT Pendant Arm System

HLT Elbow Adapter 48

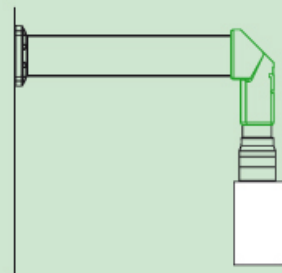


Product Description

- To connect a horizontal aluminum profile and a vertical round pipe with 48 mm diameter
- Cover detachable for easy installation
- Fall protection with enclosed screw
- Color: Similar RAL 7016 structured (anthracite gray)

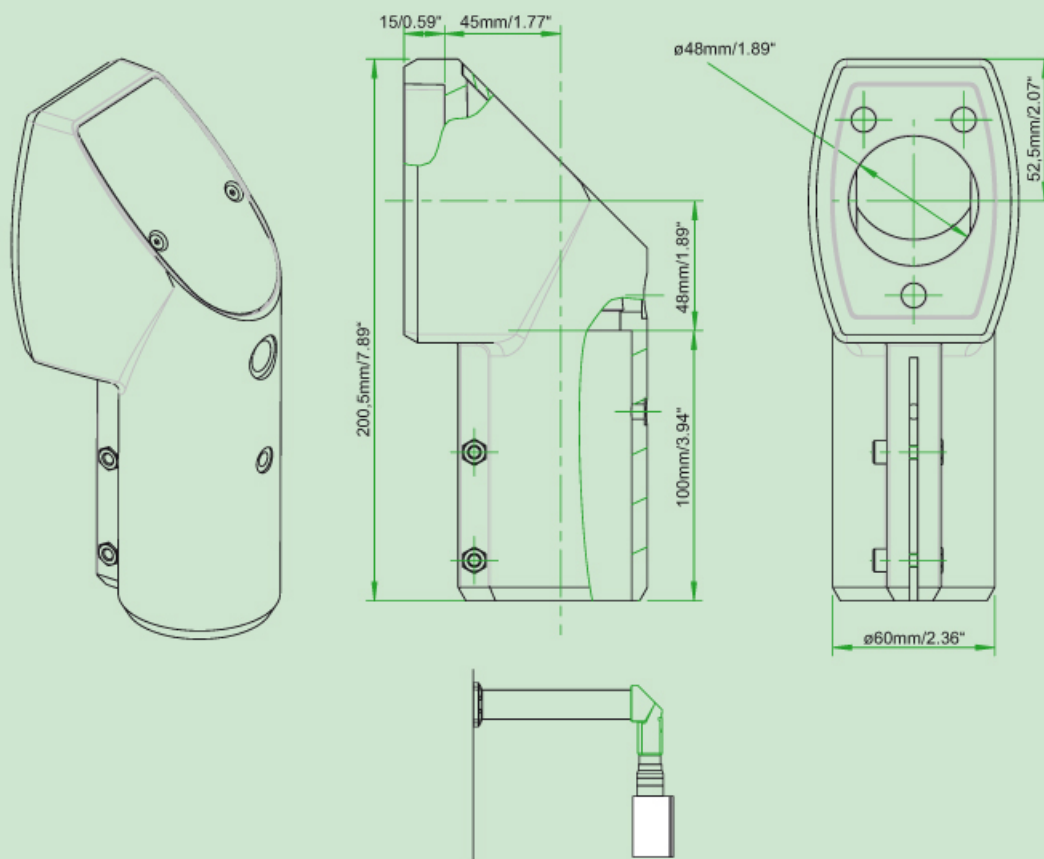
Technical Data

Further technical information → below



Description	Weight		Order No.
	kg	lbs	
HLT Elbow Adapter 48	0.8	1.76	7595-7401-16-01

Technical Information



HLT Joint 48

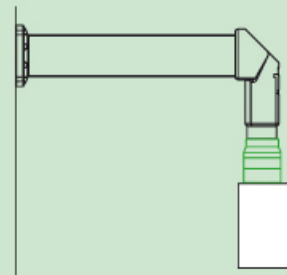


Product Description

- To connect a horizontal aluminum profile and a vertical round pipe with 48 mm diameter
- Fall protection w3ith enclosed screw
- Max. load 50 kg (110 lbs)
- Turn area 250°
- Color: Similar RAL 7016 structured (anthracite gray)

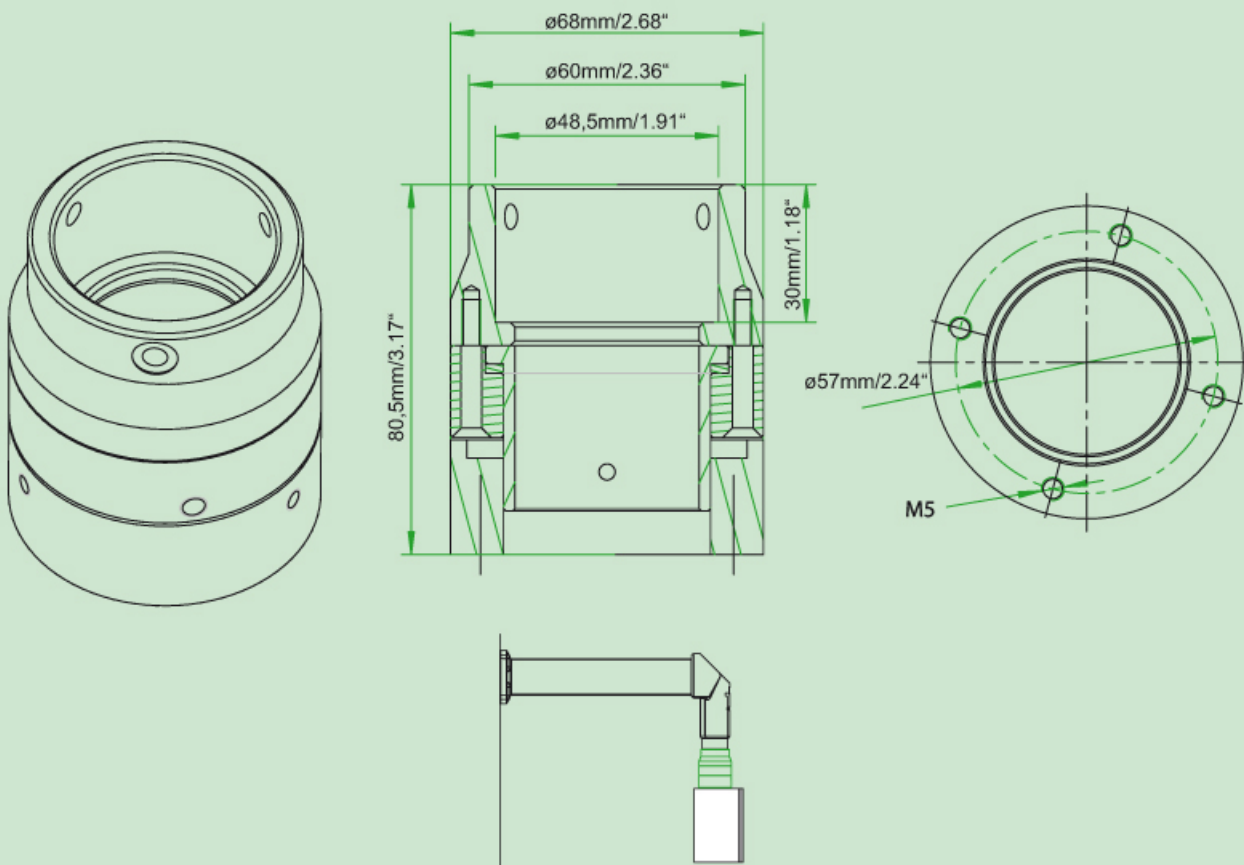
Technical Data

Further technical information → below



Description	Weight		Order No.
	kg	lbs	
HLT Joint 48	0.7	1.54	7595-7401-17-01

Technical Information



HLT Pendant Arm System

Swivel Tilt Coupling



Product Description

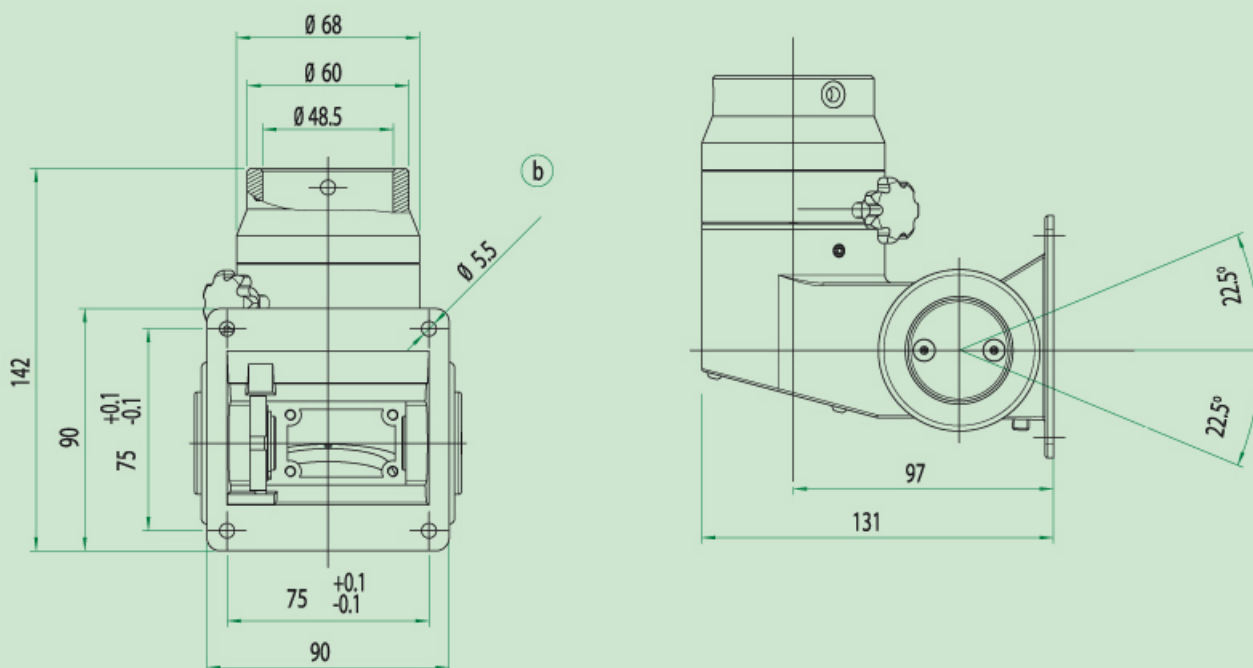
- Compact design
- With internal cable guide through VESA connection
- Quicklock available optional
- Mounting of monitors to HLT 48 pendant arm system
- Protection class IP 54 optional
- No rubber gaiter
- VESA 75 or 100 possible
- Opening for cable of both sides optional

Technical Data

Further technical information → below

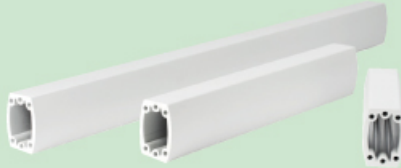
Description	Order No.
Swivel Tilt Coupling	7595-7301-01-01

Technical Information



VESA= worldwide standard for interface between pendant arm and monitor

HLT Aluminum Profiles

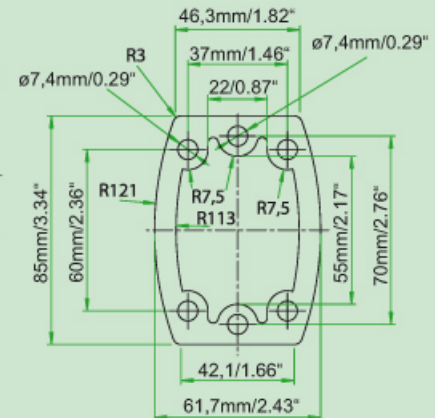


Product Description

- Aluminum profile for horizontal and vertical use. The horizontal length determines the load capacity of the system.
- Can be cut to length
- Variable inclination adjustment possible (load-dependent up to 4°)
- Standard lengths: 250, 500, 1.000 and 2.000 mm
- Custom lengths on request
- Color: Similar RAL 7016 structured (anthracite gray)

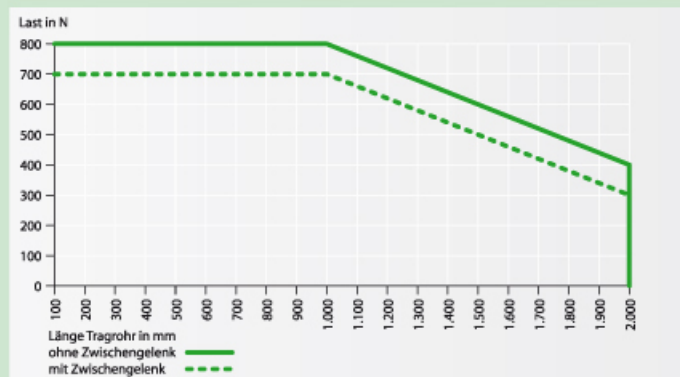
Technical Data

Further technical information → below

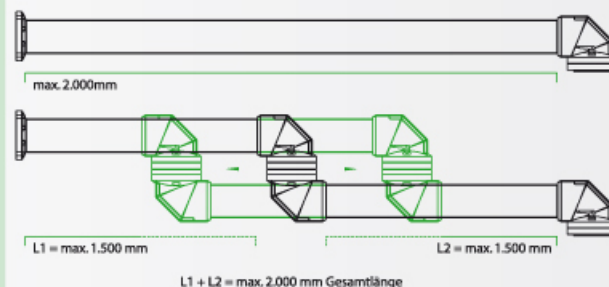


Description	Length		Order No.
	mm	inch	
HLT Aluminum Profiles	250	9.84	7595-7401-30-0250
	500	19.69	7595-7401-30-0500
	1,000	39.37	7595-7401-30-1000
	1,500	59.06	7595-7401-30-1500
	2,000	78.74	7595-7401-30-2000

The horizontal length of the profile determines its load capacity.



For a pendant arm system with joint, the length of the individual profiles is variable (max. 1500mm). The overall length though, must not exceed 2000mm.



Possibility of continuous adjustment of the gradient (load dependent up to 4°)



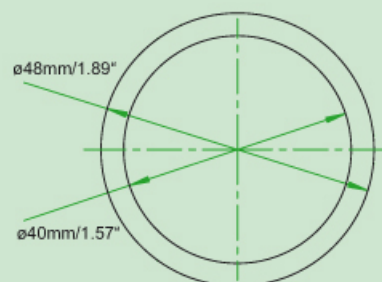
HLT Pendant Arm System

HLT Round Pipes 48



Product Description

- Round pipe \varnothing 48 mm for vertical assembly
- Can be cut to length
- Standard lengths: 250, 500, and 750 mm
- Custom lengths on request
- Color: Similar RAL 7016 structured (anthracite gray)
- Weight: approx. 1.6 kg/m / 1.1 lbs/ft



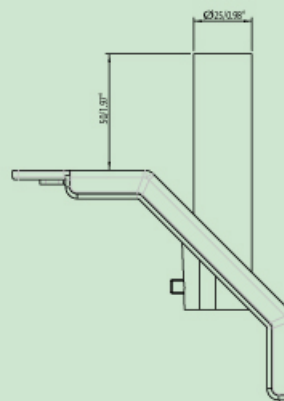
Description	Art. Nr.
Round pipes 250 mm / 9.84 inch	7595-7401-40-0250
Rundrohr 500 mm / 19.68 inch	7595-7401-40-0500
Rundrohr 750 mm / 29.53 inch	7595-7401-40-0750

Light adapter



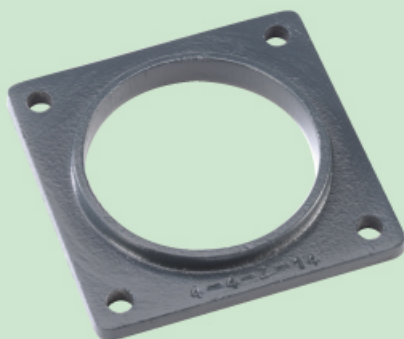
Product Description

- For a fixed installation of a signal light with 25 mm connection (inner dimension 19 mm) to: Set-up joint, wall joint, intermediate joint, elbow, elbow joint, or narrow flange elbow joint
- Color: Similar RAL 7016 structured (anthracite gray)



Description	Order No.
Light adapter	7595-7401-15-01

Cable protection disk

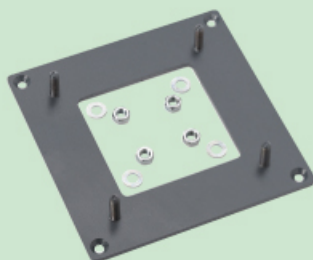


Product Description

- To avoid cable damage at enclosure apertures
- Applicable with joint and elbow joint
- Color: Similar RAL 7016 structured (anthracite gray)

Description	Order No.
Cable protection disk	7595-7401-90-01

VESA 100 adapter plate

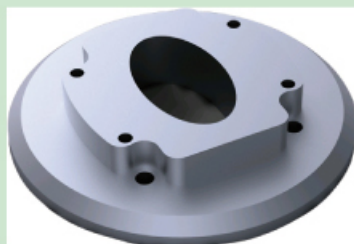


Product Description

- For fixed connections of monitors with VESA 100 hole pattern and enclosure adapter VESA
- Color: Similar RAL 7016 structured (anthracite gray)

Description	Order No.
VESA 100 adapter plate	7595-7401-90-02

Siemens-Pro adapter



Product Description

- Connection adapter pendant arm system to Siemens Pro-Panel

Description	Order No.
Siemens-Pro adapter	7595-7401-90-42
	7595-7401-90-41

VESA= worldwide standard for interface between pendant arm and monitor

HST50 / HST60 / HST80

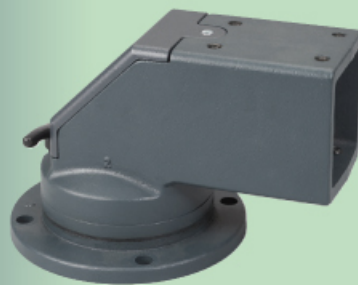
“One source for control cabinet, pendant arm, and enclosure”



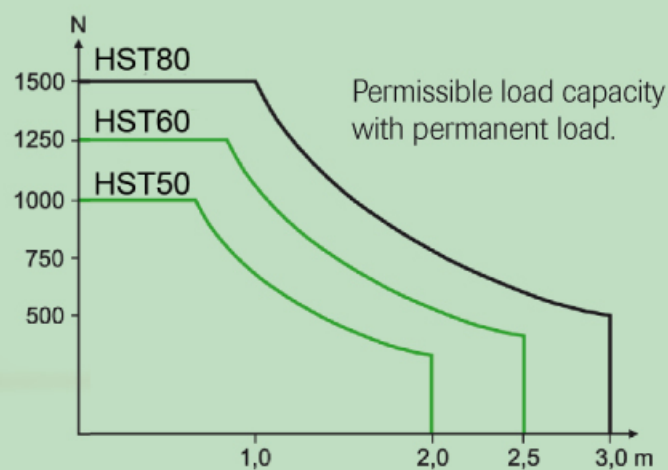
Strong and flexible pendant arm systems

Standard 50 - HST50
 Standard 60 - HST60
 Standard 80 - HST80

- Up to 3 meters (10 ft) overall system length
- By combining the different elements with the available square profiles a huge variety of individual preferences can be met
- Compatible to all commercially available enclosures

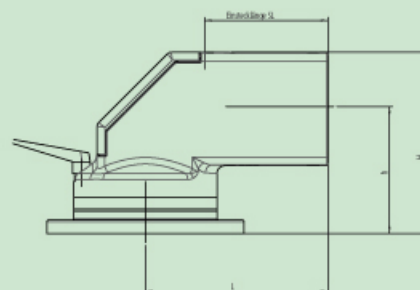
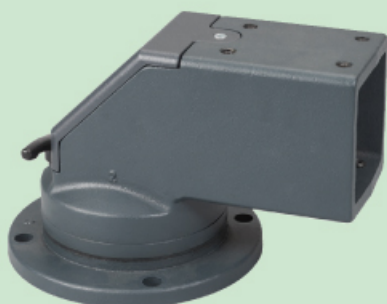


Permissible load capacity with permanent load. If using a joint, load capacity must be lowered by 40%.



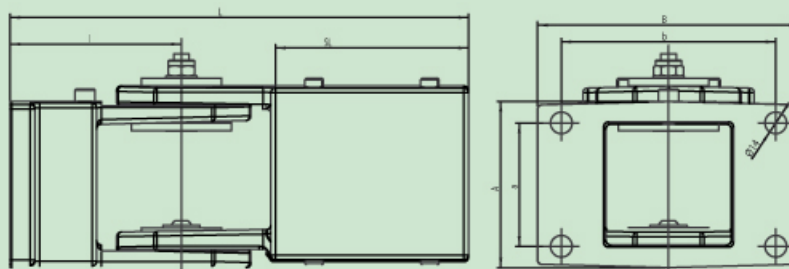
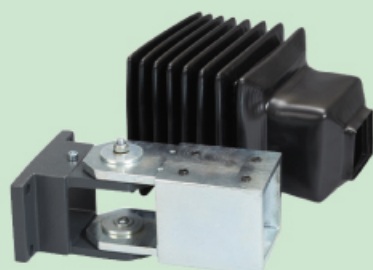
HST 50 / HST 60 / HST 80

Set-up joint



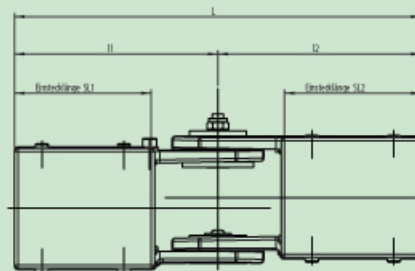
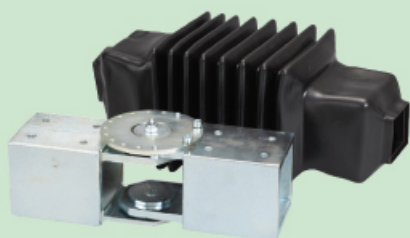
Description	L		SL		h		H		Order No.
	mm	inch	mm	inch	mm	inch	mm	inch	
Set-up joint HST50	119	4.69	75	2.95	108,5	4.27	147	5.79	7555-7405-01-01
Set-up joint HST60	137	5.39	85	3.35	119,5	4.70	163	6.42	7565-7406-01-01
Set-up joint HST80	185	7.28	125	4.92	129	5.08	184	7.24	7585-7408-01-01

Wall joint



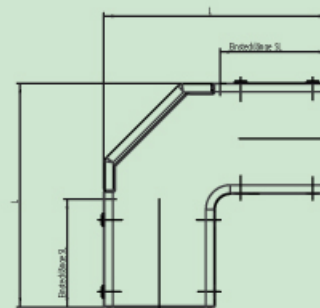
Description	L		SL		I		A		a		B		b		Order No.
	mm	inch	mm	inch	mm	inch	mm	inch	mm	inch	mm	inch	mm	inch	
HST50	200	7.87	72	2.83	85	3.35	74	2.91	50	1.97	135	5.31	107	4.21	7555-7405-02-01
HST60	204	8.03	71	2.80	87	3.42	84	3.31	60	2.36	140	5.51	115	4.53	7565-7406-02-01
HST80	297	11.69	125	4.92	111	4.37	108	4.25	80	3.15	170	6.69	139	5.47	7585-7408-02-01

Intermediate joint



Description	L		I1		I2		SL1		SL2		Order No.
	mm	inch	mm	inch	mm	inch	mm	inch	mm	inch	
Intermediate joint HST50	230	9.05	115	4.53	115	4.53	75,5	2.97	68,5	2.70	7555-7405-03-01
Intermediate joint HST60	234	9.21	117	4.61	117	4.60	77,5	3.05	70,5	2.78	7565-7406-03-01
Intermediate joint HST80	372	14.65	186	7.32	186	7.32	125	4.92	125	4.92	7585-7408-03-01

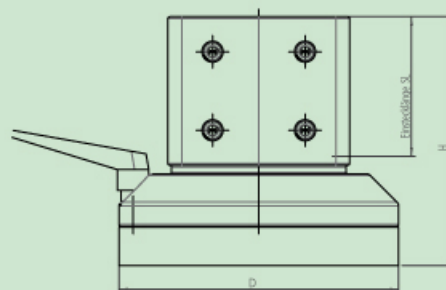
Elbow



Description	L		SL		Order No.
	mm	inch	mm	inch	
Elbow HST50	157	6.18	80	3.15	7555-7405-04-01
Elbow HST60	167	6.57	80	3.15	7565-7406-04-01
Elbow HST80	218	8.58	105	4.13	7585-7408-04-01

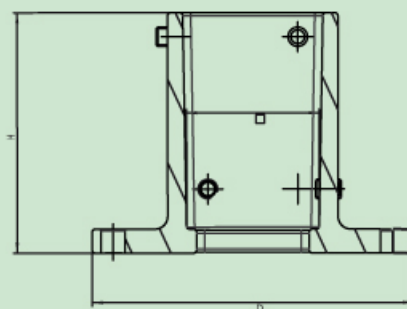
HST 50 / HST 60 / HST 80

Joint



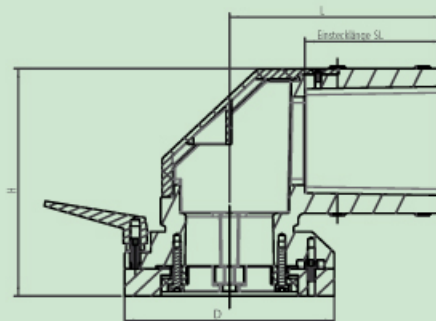
Description	SL		H		D		Order No.
	mm	inch	mm	inch	mm	inch	
Joint HST50	65	2.56	112	4.41	105	4.13	7555-7405-05-01
Joint HST60	65	2.56	112	4.41	105	4.13	7565-7406-05-01
Joint HST80	80	3.15	142,5	5.61	160	6.30	7585-7408-05-01

Base bracket



Description	H		D		Order No.
	mm	inch	mm	inch	
Base bracket HST50	90	3.54	152	5.98	7555-7405-06-01
Base bracket HST60	90	3.54	160	6.30	7565-7406-06-01
Base bracket HST80	150	2.91	200	7.87	7585-7408-06-01

Elbow joint



Description	L		SL		H1		D		Order No.
	mm	inch	mm	inch	mm	inch	mm	inch	
Elbow joint HST50	120	4.72	75	2.95	134	5.28	105	4.13	7555-7405-08-01
Elbow joint HST60	130	5.12	75	2.95	144	5.67	105	4.13	7565-7406-08-01
Elbow joint HST80	162.5	6.40	105	4.13	185.5	7.30	160	6.30	7585-7408-08-01

Steel piping

Product Description

- Compatible to all commercially available enclosures
- Nullification of pipe bending through adjusting screws
- Component inclination through use of

adjustable incline adapter

- Protection class IP54
- Color: Similar RAL 7016 structured (anthracite gray)

Description	Length		Order No.	Order No.	Order No.
	mm	inch	HST50 (50x50)	HST60 (60x60)	HST80 (80x80)
Steel piping 500 mm	500	19.69	7555-7405-30-0500	7565-7406-30-0500	7585-7408-30-0500
Steel piping 1000 mm	1000	39.37	7555-7405-30-1000	7565-7406-30-1000	7585-7408-30-1000
Steel piping 2000 mm	2000	78.74	7555-7405-30-2000	7565-7406-30-2000	7585-7408-30-2000

Control Enclosures



Basic

Extruded aluminum sheath control enclosures are available as Basic, Touch and Cool.

The HLG enclosures are particularly lightweight through a special aluminum/magnesium alloy.

Cool

Type with handle flange and cooling fins. The continuous integrated aluminum side-profile enables extremely high passive heat dissipation.



Touch

The integrated handle flange allows for easy handling as well as enhances the optic of the system

HBG

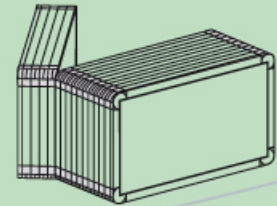
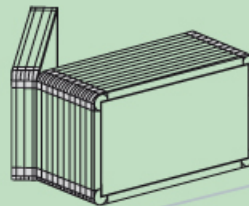
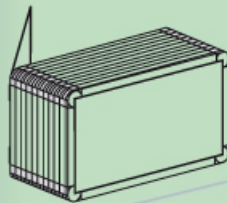
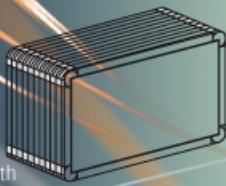
Enclosures based on the SN type with 2 trim strips for easy handling and as cover



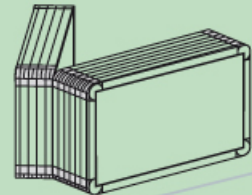
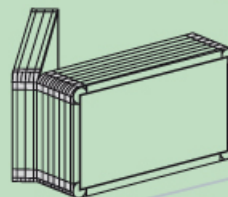
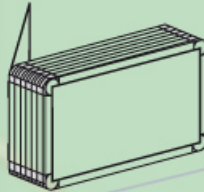
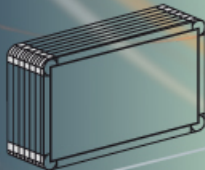
HLG Product Overview

A large variety of types and depth allows for any variations. The doors can be added to the front or the back.

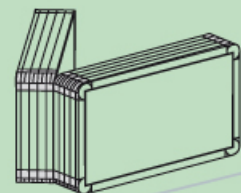
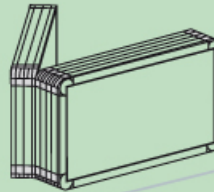
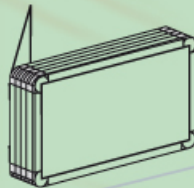
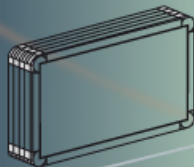
profile depth
210 mm
8.27 inch



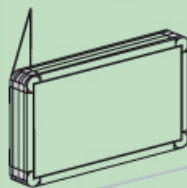
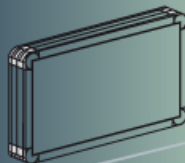
profile depth
130 mm
5.11 inch



profile depth
90 mm
3.54 inch



profile depth
60 mm
2.36 inch



“One source for control cabinet, pendant arm, and enclosure”

Variation:



Control Cabinets

HLG-Basic



Product Description

- Height and width are made to order
- Control enclosures HLG Basic are available in depth of 60, 90, 130 and 210 mm. The back wall is bolted or hinged. In Addition a 60 or 90 mm deep door can be used.
- Enclosures 90 mm and deeper can be connected to pendant arm systems from the top or bottom. Mounting to the rear wall is possible for all depths.

Description	Depth		Order No.
	mm	inch	
HLG Basic	60	2.36	7505-xxxx-06-1x
	90	3.54	7505-xxxx-09-1x
	130	5.12	7505-xxxx-13-1x
	210	8.27	7505-xxxx-21-1x

HLG-Touch



Product Description

- Height and width are made to order
- The same as the HLG Basic, the depths are 60, 90, 130 and 210 mm. The integrated handle flange differentiates this series from the HLG-Basic.

Description	Depth		Order No.
	mm	inch	
HLG Touch	60	2.36	7505-xxxx-06-2x
	90	3.54	7505-xxxx-09-2x
	130	5.12	7505-xxxx-13-2x
	210	8.27	7505-xxxx-21-2x

HLG-Cool



Product Description

- Height and width are made to order
- The HLG Cool is equipped with two handle flanges as well as internal and external cooling fins on both sides. The depth is 130 or 210 mm, which can be combined with a 60 or 90 mm deep door.

Accessories

- Console Adapter → page 36
- Handles → page 36

Description	Depth		Order No.
	mm	inch	
HLG Cool	60	2.36	7505-xxxx-06-3x
	90	3.54	7505-xxxx-09-3x
	130	5.12	7505-xxxx-13-3x
	210	8.27	7505-xxxx-21-3x

Order numbers

Product Description

Here are some sample on how to create the correct order number:

- Choose Type: HLG Basic (1), Touch (2), or Cool (**3**) Example for HLG Cool = 7505-xxxx-xx-**3**x
- Choose Depth. Example for depth **90** mm = 7505-xxxx-**09**-3x
- Choose Width. Example for width **600** mm = 7505-**60**xx-09-3x
- Choose Height. Example for height **800** mm = 7505-60**80**-09-3x
- Choose Design (see on the abridgement). Example for design with hinged rear wall (**2**) = 7505-6080-09-**32**

Control Cabinets

Console Adapter



Product Description

- Two enclosures are connected through two console adapters with locking lever. For the cable feedthrough two standard sizes are available: 43 x 34 mm (W x H) and a circular 29 mm opening
- The locking levers allow adjustment in 8° steps. The operating enclosure can be adjusted from 0° to 136°.

Technical Data

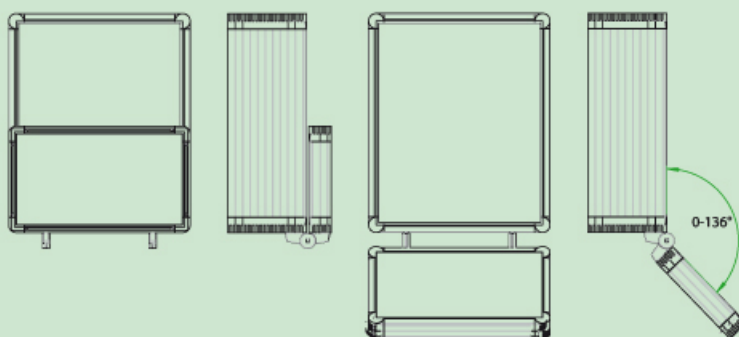
Further technical information → below

suitable for

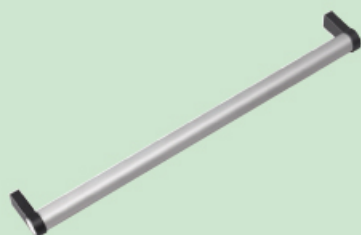
HLG Basic, HLG Touch and HLG Cool

Description		Order No.
Console Adapter		7505-4334-90-00
	Ø 29 mm / 1,14"	7505-2929-90-00

Technical Information



Handles



Product Description

- Anodized handles with black end pieces
- Handle length: 200 and 400 mm

suitable for

HLG Basic, HLG Touch and HLG Cool

Description	Length		Order No.
	mm	inch	
Handles	200	7.87	7505-7020-90-01
	400	15.75	7505-7040-90-01

HBG



Product Description

Control enclosure based on the Häwa Type SN enclosures.

Technical Data

- Robust enclosure from 1.5 mm [16 ga] sheet steel – completely welded
- Rear wall with hinged door. Locks with two latch locks, with 3 mm double mandrel. Hinges open 180°. With continuous foamed-in gasket.
- Front wall removable, made of 3 mm thick [11 ga] aluminum.
- Aluminum corner profiles hold front wall and also serve as handles
- Protection class: IP40
- Grounding per DIN EN 60439-1
- Surface: Enclosure powder-coated RAL 7035, structured

- Front wall: anodized
- Corner profiles: painted RAL 2004 (pure orange)
- Width: 600 mm; 23.62 inch
- Height: 600 mm; 23.62 inch

Note

Additional customized enclosures can be produced with short lead times based on the häwa SN series. The color of the corner profiles can be customized per your wish. Increasing of protection class to IP55 (NEMA 12) on request. Design in stainless steel and other customizations available on request.

Description	Weight		Depth		Order No.
	kg	lbs	mm	inch	
häwa control enclosures	15	33.08	200	7.87	7515-6060-20-07
	18	39.69	350	13.78	7515-6060-35-07

SN-Enclosures



Product Description

Additional enclosures and accessories can be

found in the häwa Enclosure Catalog.

Alphabetical table of contents

G

Description	page
Handles	36

H

Description	page	Description	page
HBG	37	HLT Base Bracket / Wall Flange	10
HLG Basic	34	HLT Wall Joint (horizontal)	9
HLG Cool	35	HLT Elbow	12
HLG Touch	34	HLT Elbow Adapter 48	20
HLT Set-up Joint	8	HLT Elbow Joint	13
HLT Swivel Tilt Coupling	22	HLT Narrow Flange Elbow Joint	14
HLT Enclosure Adapter VESA	19	HLT Intermediate Joint	11
HLT Lift L	7	HST Set-up joint	28
HLT Lift S	6	HST Joint	30
HLT Joint	15	HST Steel piping	31
HLT Joint 48	21	HST Base bracket	30
HLT Narrow Flange Joint	16	HST Wall joint	28
HLT Incline Adapter	17	HST Elbow	29
HLT Narrow Flange Incline Adapter	18	HST Elbow joint	31
HLT Profile	23	HST Intermediate joint	29
HLT Round Pipes 48	24		

C

Description	page
Cable protection disk	25
Console Adapter	36

L

Description	page
Light adapter	24

S

Description	page
Siemens-Pro adapter	25

V

Description	page
VESA 100 adapter plate	25

Ordner No.	page	Order No.	page	Order No.	page
7505-2929-90-00	36	7555-7405-30-1000	31	7595-7401-04-01	12
7505-4334-90-00	36	7555-7405-30-2000	31	7595-7401-05-01	15
7505-7020-90-01	36	7565-7406-01-01	28	7595-7401-06-01	10
7505-7040-90-01	36	7565-7406-02-01	28	7595-7401-07-01	16
7505-xxxx-06-1x	34	7565-7406-03-01	29	7595-7401-08-01	13
7505-xxxx-06-2x	34	7565-7406-04-01	29	7595-7401-09-01	14
7505-xxxx-06-3x	35	7565-7406-05-01	30	7595-7401-10-01	17
7505-xxxx-09-1x	34	7565-7406-06-01	30	7595-7401-11-01	18
7505-xxxx-09-2x	34	7565-7406-08-01	31	7595-7401-12-01	19
7505-xxxx-09-3x	35	7565-7406-30-0500	31	7595-7401-15-01	24
7505-xxxx-13-1x	34	7565-7406-30-1000	31	7595-7401-16-01	20
7505-xxxx-13-2x	34	7565-7406-30-2000	31	7595-7401-17-01	21
7505-xxxx-13-3x	35	7585-7408-01-01	28	7595-7401-30-0250	23
7505-xxxx-21-1x	34	7585-7408-02-01	28	7595-7401-30-0500	23
7505-xxxx-21-2x	34	7585-7408-03-01	29	7595-7401-30-1000	23
7505-xxxx-21-3x	35	7585-7408-04-01	29	7595-7401-30-1500	23
7515-6060-20-07	37	7585-7408-05-01	30	7595-7401-30-2000	23
7515-6060-35-07	37	7585-7408-06-01	30	7595-7401-40-0250	24
7555-7405-01-01	28	7585-7408-08-01	31	7595-7401-40-0500	24
7555-7405-02-01	28	7585-7408-30-0500	31	7595-7401-40-0750	24
7555-7405-03-01	29	7585-7408-30-1000	31	7595-7401-90-01	25
7555-7405-04-01	29	7585-7408-30-2000	31	7595-7401-90-02	25
7555-7405-05-01	30	7595-7301-01-01	22	7595-7401-90-41	25
7555-7405-06-01	30	7595-7401-01-01	8	7595-7401-90-42	25
7555-7505-08-01	31	7595-7401-02-01	9	7595-760x-xx-01	6
7555-7405-30-0500	31	7595-7401-03-01	11	7595-768x-xx-01	7

häwa GmbH & Co. KG

D 88489 Wain

Industriestraße 12
Tel. +49 7353 98460
Fax +49 7353 1050
info@haewa.de

D 08451 Crimmitschau

Sachsenweg 7
Tel. +49 3762 95271/2
Fax +49 3762 95278
vertrieb.c@haewa.de

D 47167 Duisburg
Gewerbegebiet Neumühl

Theodor-Heuss-Str. 128
Tel. +49 203 346530
Fax +49 203 589785
vertrieb.d@haewa.de

D 63477 Maintal
Dörnigheim

Carl-Zeiss-Straße 7
Tel. +49 6181 493031
Fax +49 6181 494003
vertrieb.rm@haewa.de

A 4020 Linz

Schmachtl GmbH
Pummererstraße 36
Tel. +43 732 76460
Fax: +43 732 785036
office.linz@schmachtl.at

B 9320 Erembodegem

häwa N.V.
Industriezone III
Industrielaan 4
Tel. +32 53 834215
Fax +32 53 834523
info@haewa.be

CH 8105 Regensdorf

häwa (Schweiz) ag
Bahnstraße 102
Tel. +41 43 3662222
Fax +41 43 3662233
info@haewa.ch

DK 6400 Sonderborg

Eegholm A/S
Grundtvigs Allé 165 - 169
Tel. +45 73 121212
Fax: +4573 121213
eegholm@eegholm.dk

E 48450 Etxebarri

hawea ibérica, s.l.
Poligono Leguizamón
Calle Guipuzcoa, Pab.9
Tel. +34 944 269521
Fax: +34 944 261087
hawea@ctv.es

F 67140 Eichhoffen

häwa-France
Siège Social
8 B Rue des Industries
Tel. +33 03 88088880
Fax: +33 03 88088859
info@haewa.fr

FIN 04130 Sipoo

A-COM OY
Susikuja 6
Tel. +358 9 2745530
Fax +358 9 27455333
acom@acom.fi

I 88489 Wain

häwa Italia
Industriestraße 12
Tel. +39 02 72094890
Fax +49 7353 1050
info@haewa.de

NL 7500 AC Enschede

häwa Nederland B.V.
Postbus 136
Tel. +31 53 4321835
Fax +31 53 4303414
info@haewa.nl

P 3730-901 Vale de Cambra

Tecnocon Tecnologia e
Sistemas de Controle, Lda.
Apartado 106, Codal
Tel. +351 256 420500
Fax +351 256 420501
mail@tecnocon.pt

SE 35251 Växjö

häwa Apparatskåp AB
S. Vallviksvägen 12
Tel. +49 7353 9846 173
Fax +49 7353 1050
info@haewa.se

USA Duluth, GA 30097

HAEWA CORPORATION
3764 Peachtree Crest Drive
Tel. +1 770 9213272
Fax +1 770 9212896
info@haewa.com

www.haewa.com

	Cabinet systems	1
	IT solutions	2
	Enclosures	3
	Fire protection	4
	Thermo components	5
	Ductwork, accessories	6
	X-frame	7
	Tools	8