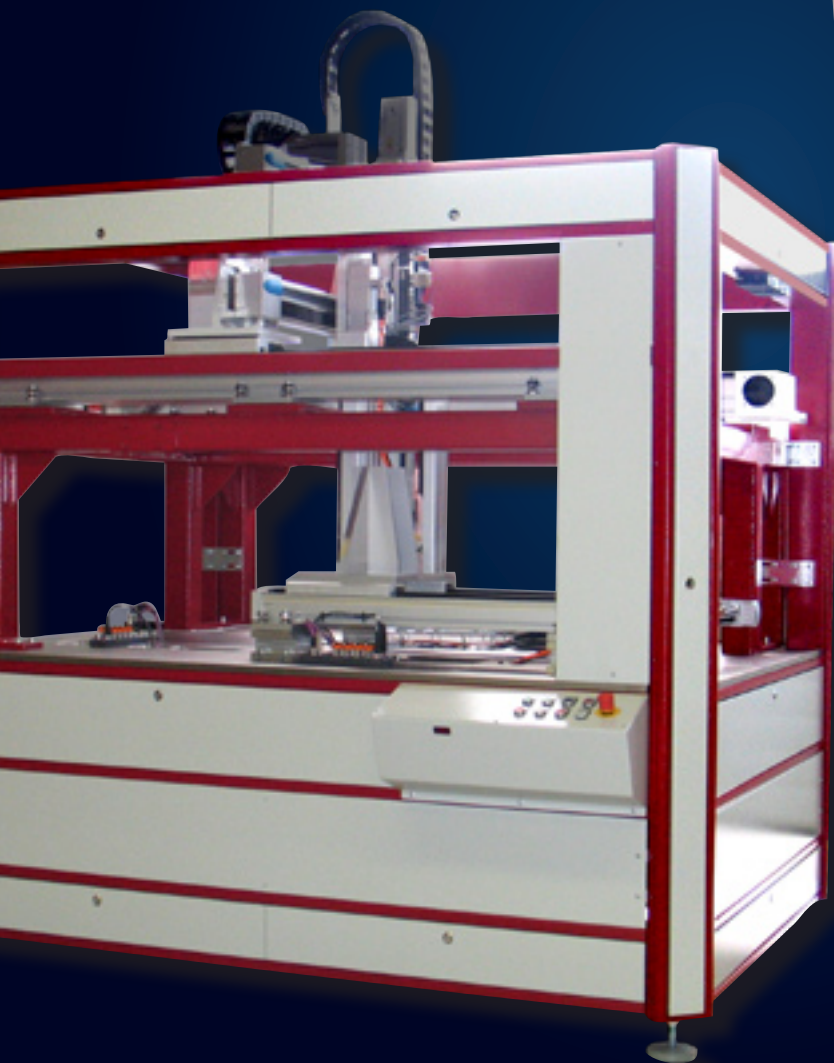
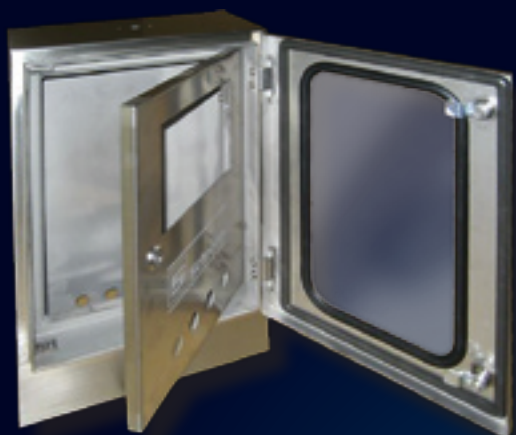


Well Conceived



	Cabinet Systems	1
	IT Solutions	2
	Enclosures	3
	Fire Protection	4
	Thermal Components	5
	Ducts, Accessories	6
	fleX-frame	7
	Tools	8

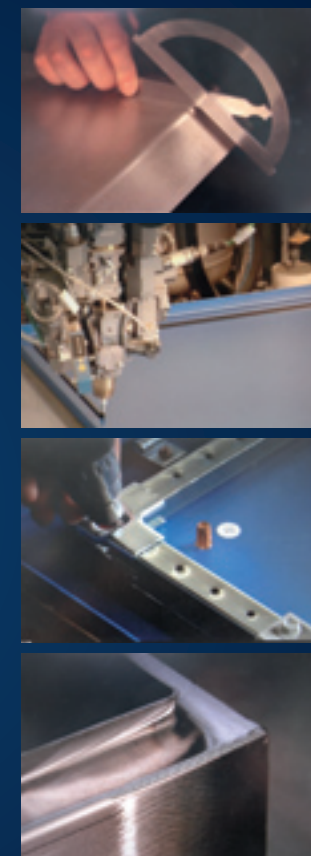


The häwa group has established itself as an innovative and highly competent supplier to machinery and facility equipment companies in the electrical and electronic industries, far beyond the borders of Europe. We develop, manufacture, and deliver standard and custom solutions – economically & reliably – for a great variety of applications. Many decades of experience in the enclosure-

business and close cooperation with end customers, guarantee optimal benefits for our customers. Our comprehensive services range from initial discussions to concept development, to design, construction, assembly and, finally to detailed logistical support. We create value-added solutions for our customers through problem solving, and develop

reliable, trusted partnerships. „Made in Germany“ is - for us - the yardstick in quality. We are a highly motivated and qualified team of over 400 associates who together with our exclusive business partners serve an ever increasing range of international customers.

	Cabinets Systems	Free Standing and Modular Cabinets in Steel and Stainless Steel, PC Cabinets
	IT Solutions	Server and Distribution Racks, Cabinets and Enclosures
	Enclosures	Wall Mount Enclosures, Junction Boxes and Small Housings in Steel, Stainless Steel, Plastic and Aluminum
	Fire Protection	Safety in Steel: Maintaining Function and Escape Safety
	Thermal Components	Heating, Ventilating and Cooling
	Cable Ducts, Accessories	Enclosed Cable Ducts, Complete Cabinet Accessories
	flex-frame	Modular single cells, Linear applications, Rotary applications
	Tools	Portable Tools, Shop Equipment and Factory Automation



### Built exceedingly well häwa's extensive product offering

Many requirements for enclosure applications are similar. We have learned this from decades long experience that resulted in a comprehensive standardized enclosure offering for you. This program includes modular cabinets, enclosures, cable ducts, tools, accessories and spares.

Our strength manifests itself in customized solutions! Those include specially modified enclosures, powder coating and other finishes to your specifications, as well as pre-assembly and installations according to your needs.

Contact us for your special requirements. We custom deliver enclosures to your exact specifications; even your desired budget.

The next pages will give you insight in our comprehensive product offering for all industries.

häwa brings you form and function.



- 1
- 2
- 3
- 4
- 5
- 6
- 7
- 8

One Idea more flexible.



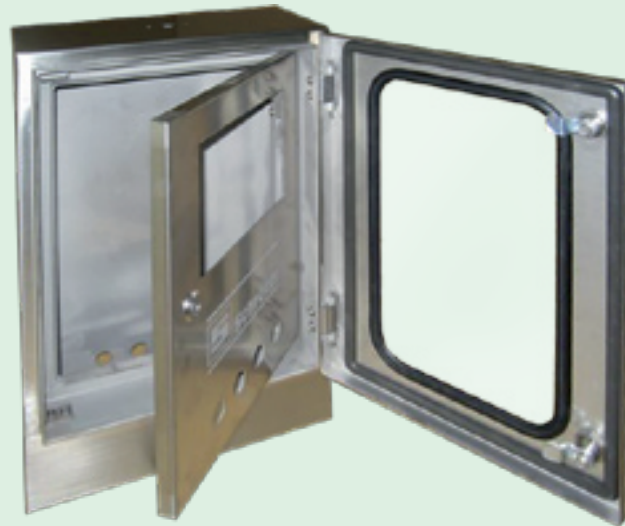
Great Selection in Sizes and Material

Cabinet Solutions for Your Applications



Enclosures

- Features:**
- Protection up to IP66-NEMA 4/4X
  - Door exchange without drilling
  - High stability
  - Wide selection of materials from plastics (Polycarbonate, ABS, Polyester) to steel and stainless steel
  - Usable in aggressive and extreme environments
  - Many options
  - Mounting of add-ons and accessories, as required
  - Flexible modifications
  - EMI / RFI shielding



**Enclosures for All Applications**

- Junction Boxes
- Small Housings
- Plastic and Aluminum Enclosures

**Highest Protection for All Uses**

- Mild Steel Wall Mount Enclosures
- Stainless Steel Wall Mount Enclosure



Cabinet Systems

- Features:**
- Protection up to IP66/69K-NEMA 4/4X
  - Easy cleaning
  - High load capability and stability
  - Easy outfitting
  - User friendly
  - Flexible Modifications
  - EMI / RFI shielding

**Versatility without Costly Assembly**

- Modular Cabinets
- Free Standing Cabinets
- Consoles
- In Steel and Stainless Steel

**Functionality and Design**

- PC Cabinets
- Seismic Cabinets

**No Tolerance for Contamination**

- Sanitary Environment Cabinets



One Idea more flexible.



Heating, Ventilating, Cooling

Endless Possibilities for Your Applications



Thermal Components

- Features:**
- Minimal space requirement per capacity rating for internal and external installation
  - Mounting of filter fans without tools and hardware
  - Simple custom modifications as a result of pre-planned design
  - Suitable for aggressive environment through maintenance-free filter-less concept
  - Highly efficient operation

**Selective Capacities with Compact Sizes**

- Heaters
- Forced Air Heaters
- Front Heaters

**Simple Heat Removal**

- Filter Fans

**High Capacity with Slim Size Design**

- Air-to-Air Heat Exchangers
- Air-to-Water Heat Exchangers

**Active Cooling in Hot Environments**

- Cost effective Premium Series
- Maintenance-free Elite Series with automatic condensate evaporation and a filter-less design



flex-frame 

The machine frame that combines design and functionality



**Endless Possibilities**

- Modular single cells
- Linear applications
- Rotary applications

**Pro-X for Heavy Duty Applications**

For extreme dynamic and static loads up to 5 tons



One Idea more flexible.



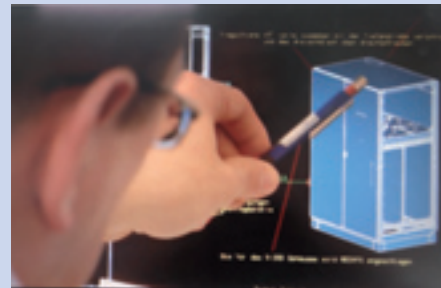
To make an impression

High Performance and Quality



Custom builds

- Features:**
- Distinctive appearance
  - Ready for installation or outfitting
  - Unique
  - Integrated solutions with thermal management



Unique Development with the Know-How from Series Production

- Machinery
- Traffic Management
- Infrastructure
- Factory Automation
- Facilities
- Food Processing /Pharmaceuticals
- Your Enterprise
- Marine
- Energy
- Oil and gas



Tools



Portable Tools

- Small, compact, powerful
- Flexible, exact, easy to use
- No chips, flash-free

- Ideal to enlarge existing holes
- Custom stamps available



Complete Customization in our US-Headquarters in Atlanta, GA



Custom Cut-outs with Quick Turn-arounds

On our CNC-WorkCenter we can offer extremely quick turn-arounds on custom cut-outs of in-stock cabinets + enclosures. All junction boxes, wall-mount enclosures, and modular cabinets can be customized to customer drawings and shipped from our 20,000 sqft warehousing facility in Atlanta, GA within a few days.

One Idea more flexible.



One Source for Control Cabinet, Pendant Arm, and Enclosure

Partnership

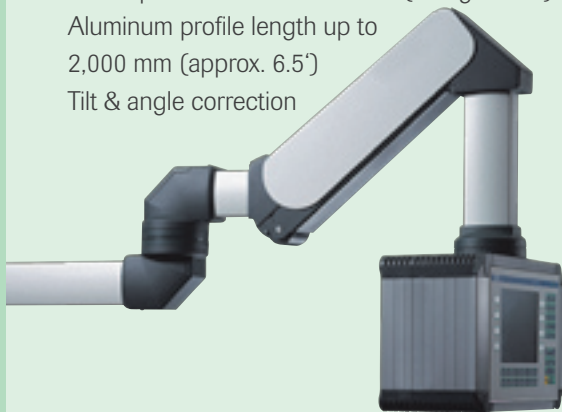


HLT Pendant Arm System

**Features:** High carrying capacity of pendant arm with or without joints  
 Protection class IP54 DIN EN 60529 / NEMA 12  
 Material: Extruded aluminum tube and cast aluminum  
 The system offers a continuous, load-dependent incline variation

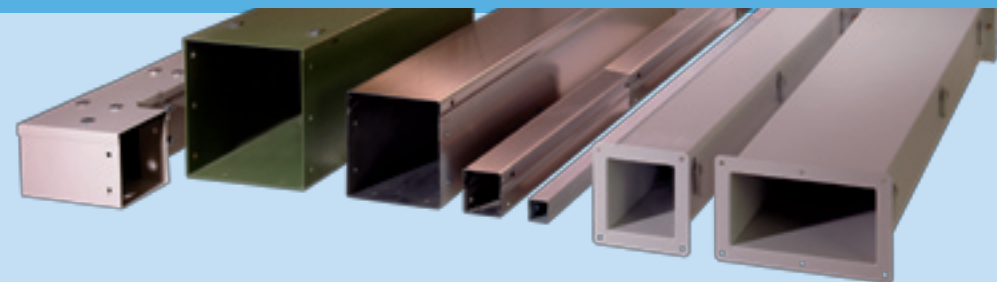
**Robust Pendant Arm System out of Lightweight Extruded Aluminum Profile offers High Flexibility**

Section tube 62 x 85 mm (2.44" x 3.35")  
 Load up to 175 lbs at 40 inches (80 kg at 1 m)  
 Aluminum profile length up to 2,000 mm (approx. 6.5')  
 Tilt & angle correction



Cable Ducts

**Features:** Protection up to IP 65-NEMA 4  
 Solid construction  
 Seven sizes for various applications  
 Maximum flexibility due to great selection of connectors and branching options  
 Custom production for your specific application



Cable Entry Systems



In cooperation with our 'Cabinet Partner' Jacob GmbH out of Kerzen, Germany, we are proud to offer the complete line of cable entry products here in the US market.

We stock metric-, PG-, and NPT- cable glands, lock-nuts and screw plugs, along with various adapters, enlargers, and reducers, in plastic, brass and stainless steel.

All main product series have approvals according to UL 514B and EN 50262.



Land der Ideen – Customizing Your Ideas

[www.comoso.com](http://www.comoso.com)



**USA Duluth, GA 30097**

HAEWA CORPORATION  
 3764 Peachtree Crest Drive  
 Tel. +1 770 9213272  
 Fax +1 770 9212896  
 haewa@haewacorp.com  
 www.haewa.com

**D 88489 Wain**

Industriestraße 12  
 Tel. +49 7353 98460  
 Fax +49 7353 1050  
 info@haewa.de  
 www.haewa.de

cabinet ▪  
 ▪ partners

[www.cabinet-partners.com](http://www.cabinet-partners.com)



	Cabinet Systems	1
	IT Solutions	2
	Enclosures	3
	Fire Protection	4
	Thermal Components	5
	Ducts, Accessories	6
	fleX-frame	7
	Tools	8