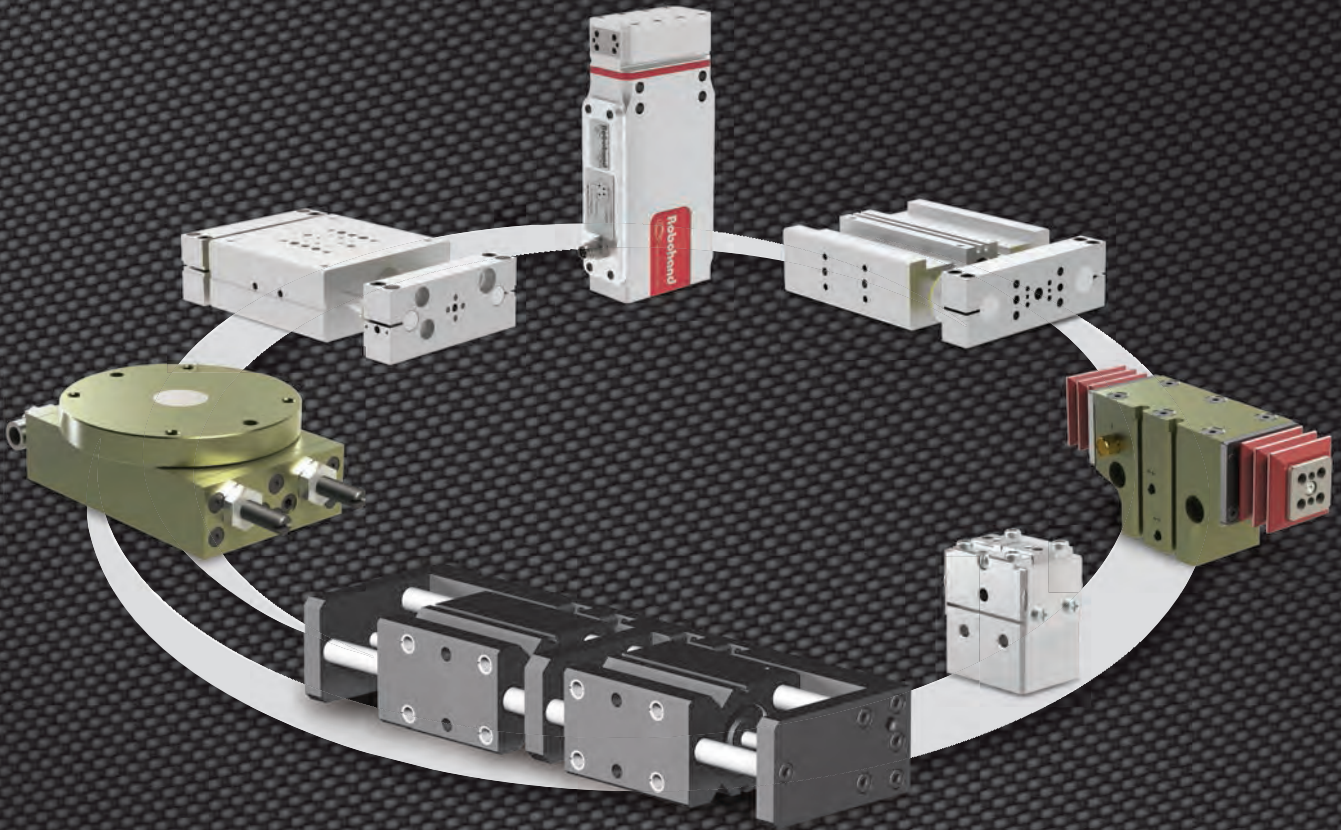


Robohand X PRESS



EXPRESS DELIVERY FOR WORLD-CLASS AUTOMATION PRODUCTS

GRIPPERS • ROTARIES • SLIDES
TOOL CHANGERS • ESCAPEMENTS

destaco.com



A DOVER COMPANY



Our Most Popular Models



Parallel Grippers



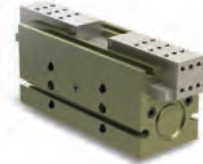
G100 Series
OEM Gripper
Stroke: 0.24 to 1.97 in
Force: 13 to 125 lbf



DPDL Series
Modular Gripper
Stroke: 0.38 to 1.0 in
Force: 14 to 100 lbf



DPDS Series
Modular Gripper
Stroke: 0.13 to 0.38 in
Force: 14 to 100 lbf



DPG Series
Modular Gripper
Stroke: 0.25 to 1.0 in
Force: 50 lbf

Parallel Grippers



RP Series
Double Wedge Gripper
Stroke: 0.25 to 1.25 in
Force: 40 to 400 lbf



RPS Series
Spring Gripper
Stroke: 0.25 to 0.75 in
Force: 50 to 300 lbf



RPL Series
Low Profile Gripper
Stroke: 0.25 to 1.0 in
Force: 26 to 36 lbf



RPLC Series
Clean Room Gripper
Stroke: 0.25 to 1.0 in
Force: 26 to 36 lbf

Parallel Grippers



DPP Series
Precision Gripper
Stroke: 0.25 to 1.0 in
Force: 25 to 45 lbf



RP-P Series
Precision Gripper
Stroke: 0.5in to 1.13 in
Force: 24 to 80 lbf



RPM
Micro Gripper
Stroke: 0.13 to 0.25 in
Force: 8 lbf



RPMC
Micro Gripper
Stroke: 0.13 to 0.25 in
Force: 8 lbf

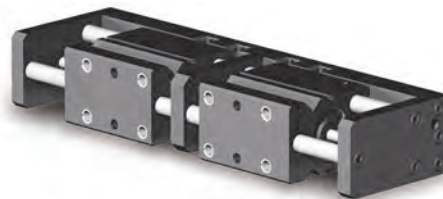
Heavy-Duty Parallel Grippers



DPW Series
Wide Body Gripper
Stroke: 0.75 to 2.5 in
Force: 50 to 180 lbf



RPW Series
Wide Body Gripper
Stroke: 0.75 to 4.5 in
Force: 50 to 470 lbf



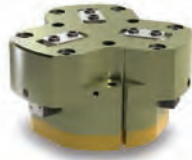
RPR Series
Heavy-Duty "Gladiator" Gripper
Stroke: 7.87 in
Force: 800 lbf

Electric Gripper



DPE Series
Electric Gripper
Stroke: 0.98 in
Force: 20 lbs

3 Jaw Gripper



RTH Series
3-Jaw Centering Gripper
Stroke: 0.16 to 1.26 in
Force: 130 to 3099 lbf

Angular Grippers



RA Series
Cam Driven Gripper
Stroke: 6° to 90° per finger
Force: 20 to 80 lbf



DCT Series
180° Gripper
Stroke: 90° per finger
Force: 7.2 to 25 lbf

Linear Slides



DLB (B, L & U) Series
Internally Powered
Base Slide
Stroke: 1.0 to 3 in
Payload: 15 to 45 lbs



DLT (B, E, U & L) Series
Internally Powered
Thruster Slide
Stroke: 0.25 to 20 in
Payload: 20 to 79 lbs



DLM Series
Mini Ball Rail Slide
Stroke: 0.5 to 4.0 in
Payload: 1.0 to 4.0 lbs

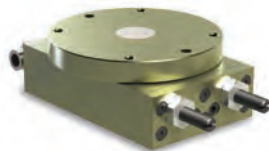


MPS Series
Mini Ball Rail Slide
Stroke: 0.5 to 2.0 in
Payload: 0.30 to 3.0 lbs

Rotary Actuators



RR Series
Light-Duty
Rotary Actuators
Payload: 1 to 3 lbs
Torque: 6.5 to 22 in/lbs



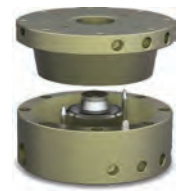
RR Series
Medium-Duty
Rotary Actuators
Payload: 8 to 200 lbs
Torque: 65 to 1900 in/lbs

Escapements



RFE Series
Conveying
Feed Escapement
Stroke: 0.625 to 1.25 in
Thrust Force: 25 to 90 lbs

Tool Changers



RHC Series
Robot & Tool Sides
Payload: 20 to 1000 lbs
15 or 38 pin Electrical and
6 to 10 Pneumatic ports

Tool Changers



RQC Series
Robot Side
Payload: 200 to 1200 lb
19 pin Electrical and
6 port Pneumatic



RTP Series
Tooling Side
Payload: 200 to 1200 lb
19 pin Electrical and
6 port Pneumatic



QC Series
Robot Side
Payload: 30 to 150 lbs
12 or 15 pin Electrical
and 4 Pneumatic ports




TP Series
Tooling Side
Payload: 30 to 150 lbs
12 or 15 pin Electrical,
and 4 Pneumatic ports

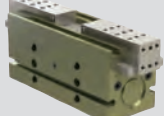



Standard Product Lead Time with Options




Electric Parallel Grippers

			Lead Time: 3-Day	10 Day	Consult Factory
	DPE-200 Series	Metric Only	DPE-200-25	N/A	N/A


2-Jaw Parallel Grippers

Product Name			Lead Time: 3-Day	10 Day	Consult Factory
	xG100 Series		All Models, All Sizes		
	DPDL Series	Metric Only	DPDL-047M-038 DPDL-056M-050 DPDL-125M-100	-B, -E, -V option	-CR, -S option, Imperial Units
	DPDS Series	Metric Only	DPDS-047M-013 (-B) DPDS-056M-019 (-B) DPDS-088M-025 (-B) DPDS-125M-038 (-B) DPDP-250M-075 (-B)	-V option	-CR, -S option, Imperial Units
	DPG Series	Imperial/ Metric	DPG-10(M)-1 (-C, -O) DPG-10(M)-2 (-C, -O) DPG-10(M)-3 (-C, -O) DPG-10(M)-4 (-C, -O)	-LF, -RF, -NS, -V option	-T option,
	DPP Series	Metric Only	DPP-10M-06 (-C) DPP-10M-12 (-C) DPP-14M-15 (-C) DPP-20M-25 (-C)	-NS, -V option	
	RP Series	Imperial/Metric	RP-5 (M) (-V) RP-10 (M) (-V) RP-11 (M) (-V) RP-12 (M) (-V), RP-15 (M) (-V) RP-17 (M) (-V) RP-18 (M) (-V)	-D, -FS, option	
	RP-P Series	Imperial/ Metric	RP-25P (M) RP-50P (M) RP-100P (M)	-V option	
	RPS Series	Imperial/Metric (select models)	RPS-11 RPS-12 (M) (-C) RPS-17 (M) (-D) (-C)	-O, -V option	
	RPL Series	Imperial/ Metric	RPL-1 (M) RPL-2 (M) RPL-3 (M) RPL-4 (M)	-NS, -V option	
	RPLC Series	Imperial/ Metric	RPLC-1 (M) RPLC-2 (M) RPLC-3 (M) RPLC-4 (M)	-NS, -V option	
	RPM Series	Metric Only	RPM-1M RPM-2M RPM-3M	-V option	
	RPMC Series	Metric Only	RPMC-1M RPMC-2M RPMC-3M	-V option	



2-Jaw Heavy-Duty Parallel Grippers

			Lead Time: 3-Day	10 Day	Consult Factory
	DPW Series	Metric Only	DPW-250M-2 (-W) DPW-375M-1 (-W) DPW-375M-2 (-W) DPW-500M-1 (-W) DPW-500M-2 (-W)	-NS, -V option	
	RPW Series	Metric Only	RPW-250M RPW-375M-1 RPW-375M-2 RPW-500M-1 RPW-500M-2 RPW-625M-1 RPW-625M-2 RPW-750M	-NS, -V option	Imperial Units
	RPR Series	Metric Only	RPR-200		


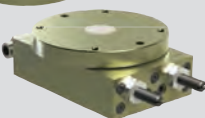
3-Jaw Parallel Grippers

			Lead Time: 3-Day	10 Day	Consult Factory
	RTH Series	Metric Only	RTH-1M (-L) RTH-2M (-L) RTH-3M (-L) RTH-4M (-L) RTH-5M (-L) RTH-6M (-L)	-C, -O, -SP	-V

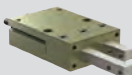
Angular Grippers

			Lead Time: 3-Day	10 Day	Consult Factory
	DCT Series	Metric Only	DCT-12M DCT-16M	-RE, -V option	-SD, -BR
	RA Series	Imperial/Metric (select models)	RA-5 (M) RA-6 (M) RA-10 RA-15 RA-90	-V option	All other models

Rotary Actuators

			Lead Time: 3-Day	10 Day	Consult Factory
	RR Series Light Duty	Imperial/Metric (select models)	RR-18-45 (-90) (-180) RR-28-90 (-180) RR-36M-90 (-180) RR-46M-90 (-180)	-S, -V option -M (size 36 & 46 units)	-CR, -T Option, Other Models
	RR Series Medium Duty	Metric Only	RR56M-180-A-M RR66M-180-A-M RR76M-180-A-M	-45, -90, -S, -V option	Imperial Models





Feed Escapements

			Lead Time: 3-Day	10 Day	Consult Factory
	RFE Series	Metric Only	RFE-11M RFE-12M RFE-13M	-V option	-T option Imperial Units

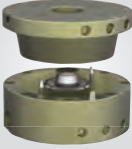
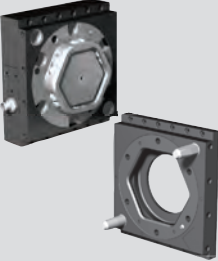
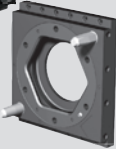




Standard Product Lead Time with Options

Linear Slides

			Lead Time: 3-Day	10 Day	Consult Factory
	DLB Series	Imperial Only	DLB-10-B (-L)-B (-C) DLB-12-B (-L)-B (-C) DLB-16-B (-L)-B (-C)	-U option	-T, -A,-N, -R, -S, -V options, Metric units
	DLT Series	Metric Only	DLT-08M-B-C DLT-10M-B-B (-C) DLT-12M-B-B (-C) DLT-16M-B-B (-C)	-E, -L, -U options (for 3 day Xpress items) DLT-20M-B-B, DLT-25M-B-B	-B (08 bearing), -T, -A,-N, -R, -S, -V options
	DLM Series	Metric Only	DLM-07M-25 DLM-09M-50 DLM-12M-25	-D, -P options	Consult factory for other Sizes
	MPS Series	Imperial Only	MPS-1-1 (-2) (-3) (-4) MPS-2-1 (-2) (-3) (-4)	-V option	

Tool Changers

			Lead Time: 3-Day	10 Day	Consult Factory
	RHC Series	NPT Ports Only	RHC-1M-R RHC-1M-T RHC-2M-R RHC-2M-T	-V option	All other models
	RQC Series	NPT Ports Only	RQC-200N RQC-400N RQC-800N -LO, -CD, -CP Lock Sensing, -E19, -FN Modules	BSPP, BSPT port options	All other options and modules
	RTP Series	NPT Ports Only	RTP-200 RTP-400 RTP-800 -E19, -FN Modules		All other options
	QC Series	NPT Ports Only	QC-30-E15 QC-60-E15 QC-150-E15	-E26 Module (QC60/QC150 model)	E10, E12, -10P, All other options
	TP Series	NPT Ports Only	TP-30-E15 TP-60-E15 TP-150-E15		All other options

3 DAY X-PRESS

Robohand World-Class Gripping Solutions

We offer a full line of automation products to meet your application needs quickly.

For almost 100 years, DE-STA-CO has been delivering value. Now we deliver the DE-STA-CO quality and dependability value even faster with our Robohand Brand products.

Xpress Value Program:

- 3-day shipments on our most popular products
- It's Automatic! - No special ordering requirements
- Large inventory of components for fast assembly
- Supports 1000s of product configurations

This brochure highlights the products that are in our Automation Xpress program. Our Xpress program is based on small quantity orders. Lead times for large orders may be longer. Don't see what you need? DE-STA-CO's custom solutions applications team is ready to offer cost effective solutions for your unique applications.

Explore our full line of global automation products ready to provide you with unmatched performance, support and reliability.

World-Class Solutions Delivered





A DOVER COMPANY

Workholding

- Widest variety of workholding products
- High durability and reliability
- Flexible solutions for all applications
- Custom products for unique requirements

Automation

- Broad range of engineered automation products
- Complementary products for modular integration
- Unmatched accuracy, reliability and performance
- Unparalleled global sales, service and engineering support

GLOBAL LOCATIONS

NORTH AMERICA

DE-STA-CO Headquarters
 Auburn Hills, Michigan
 Tel: 1.248.836.6700
 Toll Free: 1.888.DESTACO
 Marketing: marketing@destaco.com
 Customer Service: customerservice@destaco.com

Charlevoix, Michigan
 Tel: 1.888.DESTACO
 Customer Service: customerservice@destaco.com

Wheeling, Illinois
 Tel: 1.800.645.5207
 Customer Service: camco@destaco.com

Red Wing, Minnesota (Central Research Laboratories)
 Tel: 1.651.385.2142
 Customer Service: sales@centres.com

SOUTH AMERICA

Brazil
 Tel: +55-11-2923-6640
 Customer Service: samerica@destaco.com

ASIA

Thailand
 Tel: +66-2-326-0812
 Customer Service: info@destaco.com

China
 Tel: +86-21-6081-2888
 Customer Service: china@destaco.com

India
 Tel: +91-80-41123421-426
 Customer Service: india@destaco.com

EUROPE

Germany
 Tel: +49-6171-705-0
 Customer Service: europa@destaco.com

France
 Tel: +33-1-3996-5000
 Customer Service: france@destaco.com

UK
 Tel: +44-1902-797980
 Customer Service: uk@destaco.com

Spain
 Tel: +34-936361680
 Customer Service: spain@destaco.com

Netherlands
 Tel: +31-297285332
 Customer Service: benelux@destaco.com



A DOVER COMPANY

1025 Doris Road
 Auburn Hills, MI 48326
 Phone: 1.888.DESTACO
 Fax: 1.248.836.6901

Email: solutions@destaco.com
 Web: www.destaco.com



© Copyright, 2015 DE-STA-CO. All rights for layout, photos and text rest with the publisher DE-STA-CO. All photomechanical or other reproductions only with our express permission. All sales are based on our terms and conditions of sale, delivery and payment.

DSC_AUTOXP-B_0115_US_3.5K SOTAD